

Holiday lettings Green Provence "La Boussarelle"



Stone-Built Residence, detached, single storey, separate entrance, in a(an) Charming Property

Setting : country setting, heavenly

Capacity : from 2 to 8 person(s)

Bedroom(s) : 4

Room(s) : 2



Gîtes de France (4 ears)
Fleurs du Soleil ()

Cotignac - Var (83) - Provence-Alpes-Côte d'Azur (French Riviera)
France

Reservation : +33 (0) 671700422 (France)

Advert No. 56242

www.ihacom.co.uk



>> HOLIDAY LETTINGS

BOOK DIRECT WITH THE OWNERS

Holiday lettings



Stone-Built Residence, detached, single storey, separate entrance, in a(an) Charming Property

- **Ideal for family, couples**
- **View :** panoramic, unobscured, not overlooked, dominant, country side, swimming pool
- **Setting :** country setting, heavenly
- **Exposure :** South-east

Assets

- **Swimming pool :**
Private swimming-pool, unusual (length 26', width 13'), heated, illuminated, wave machine, steps in, child secure, outside shower (open from '01 april' till '01 october')
- **Parking :**
Parking uncovered : 5 off road.
- **Advantages :**
Ping-pong table, 6 ping-pong bats, 1 pétanque set(s)
- **baby equipment :**
Baby chair, baby changer, baby bath, playpen



Charming Property

Surroundings & location



Countryside

Leisure

- **Leisure activities less than 20 km / 12 miles :**

Bathing, pedalo, canyoning, tennis, riding school, pathway, hiking, mountain bike (path), kite flying, horse trekking

- **Supervised :**

Riding school

- **Attractions and relaxation :**

Bar/pub, restaurant, cinema, open air summer cinema, leisure park, exhibition centre, art gallery, historical site, museum, summer theatre, opera house, festivals, antiques & bric-a-brac, cellar and wine tasting, beauticians

Surroundings

- **Locality :**

Sandy beach >31mi.
Rocky beach 31mi.
Public tennis court 1.85mi.
18 hole golf course 9mi.
Waterfall 6mi.
River 3mi.
Forest 0.3mi.

- **Amenities :**

Village centre 1.85mi.
Breadshop 1.85mi.
Caterer 1.85mi.
Local shops 1.85mi.
Supermarket 1.85mi.
Hairdressing salon 1.85mi.
Post office 1.85mi.
Bank 1.85mi.
Cash point 1.85mi.
Chemist 1.85mi.
Doctor 1.85mi.
Nurse 1.85mi.
Hospital 12.5mi.



the decor



façade

Exterior

- **Ground surface :**
7.5 acres
- **Outside accommodation :**
Terrace 1,300 Sq.ft., roof terrace 215 Sq.ft., sundeck 194 Sq.ft., gazebo
- **Outside setting :**
Garden, landscaped garden, woods, pinewood, olive grove 7.5 acres, wells/spring
- **Outside amenities :**
Gas BBQ, garden table(s), 10 garden seat (s), trolley on wheels, parasol, 8 chaise(s) longue(s), hammock(s), outside shower facilities



view from the house

Interior

- **Receive up to :**
from 2 to 8 person(s) (6 adults, 2 children)
- **Liveable floor area :**
2,150 Sq.ft.
- **Interior layout :**
2 Room(s), 4 bedroom(s), sleeping area, 3 bathroom, 3 shower room, 4 WC, sitting room 430 Sq.ft., separate kitchen, dining area, work studio, veranda
- **Sleeps - bed(s) :**
1 sofa bed(s) 2 pers, 3 single bed(s), 2 twin beds (standard), 2 sofa bed(s) 1 pers, 2 baby cot(s), 2 possible extra bed(s)
- **Guest facilities :**
T.V., videoplayer, board games, book collection, cable/satelite, internet access, high speed internet access, wifi, wardrobe, cupboard, Hanging wardrobe, safe deposit box, hair dryer, heated towel rail, power shower, mosquito nets, fly screens, mobile cool air fan, central heating, Curtains, Blinds
- **Appliances :**
Crockery/cuttlery, kitchen utensils, cafetiere, electric coffee maker, electric espresso coffee maker, electric kettle, toaster, juicer, food processor, gas cooker, electric hobs, oven, mini-oven, micro-wave oven, electric chip fryer, refridgerator, freezer, dish washer, washing machine, clothes dryer, vacuum cleaner, iron, ironing board

Services

- **Washing :**
Sheets, Towels, Linen, Beach towels, Quilt (s), Pillows
- **House :**
Cleaning supplement, Cleaning on departure supplement, Garden/swimming pool maintenance, Parking

For your guidance

- **For your guidance**
Children welcome
Pets accepted under certain conditions (ask the owner)
Present on site : pets
Non smoking rental, mobile telephone network coverage, personal transport advisable
Water : hot/cold
Local voltage supply : 220-240V / 50Hz
Electricity supply : mains



Winter

Photo album - 1



Charming Property



façade



the decor

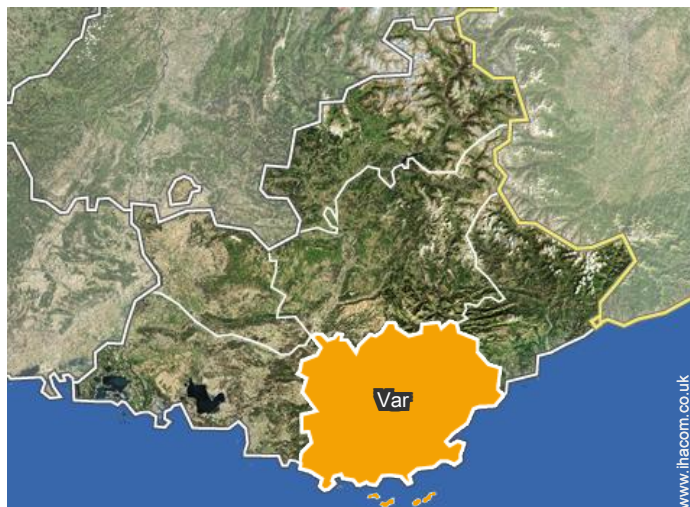


view from the house



Winter

Location



Location & Access



GPS coordinates in degrees, minutes, seconds: Latitude 43°30'31"N - Longitude 6° 8'31"E ([Dwelling](#))

Address

→ 3630, chemin de Correns
83570 Cotignac

• Nice : (59mi.)

• Motorway (junction) A8 sortie 35 Brignoles

→ Brignoles, Var, Provence-Alpes-Côte d'Azur (French Riviera), France
→ Distance : 9mi.
→ Time : 20'

• Airport Marseille Provence

→ Marseille, Bouches-du-Rhône, Provence-Alpes-Côte d'Azur (French Riviera), France
→ Distance : 50mi.
→ Time : 1h15'

• La Garde Freinet : (25mi.)

• Aix-en-Provence : (35,5mi.)

Contact

Spoken languages



Holiday lettings Cotignac - Green Provence "La Boussarelle"

[Book now](#)

Availability calendar - from : september 2017

Sep	F	Sa	Su	M	Tu	W	Th	F	Sa	Su	M	Tu	W	Th	F	Sa	Su	M	Tu	W	Th	F	Sa							
2017	1	2	3	4	5	6	7	8	9	10	11	12	13	14	15	16	17	18	19	20	21	22	23	24	25	26	27	28	29	30

Oct	Su	M	Tu	W	Th	F	Sa	Su	M	Tu	W	Th	F	Sa	Su	M	Tu	W	Th	F	Sa	Su	M	Tu							
2017	1	2	3	4	5	6	7	8	9	10	11	12	13	14	15	16	17	18	19	20	21	22	23	24	25	26	27	28	29	30	31
	-	-	-	-	-	-	-	-	-	-	-	-	-	-	-	-	-	-	-	-	-	-	-	-	-	-	-	-	-	-	

Nov	W	Th	F	Sa	Su	M	Tu	W	Th	F	Sa	Su	M	Tu	W	Th	F	Sa	Su	M	Tu	W	Th							
2017	1	2	3	4	5	6	7	8	9	10	11	12	13	14	15	16	17	18	19	20	21	22	23	24	25	26	27	28	29	30
	-	-	-	-	-	-	-	-	-	-	-	-	-	-	-	-	-	-	-	-	-	-	-	-	-	-	-	-	-	-

Dec	F	Sa	Su	M	Tu	W	Th	F	Sa	Su	M	Tu	W	Th	F	Sa	Su	M	Tu	W	Th	F	Sa	Su							
2017	1	2	3	4	5	6	7	8	9	10	11	12	13	14	15	16	17	18	19	20	21	22	23	24	25	26	27	28	29	30	31
	-	-	-	-	-	-	-	-	-	-	-	-	-	-	-	-	-	-	-	-	-	-	-	-	-	-	-	-	-	-	

Jan	M	Tu	W	Th	F	Sa	Su	M	Tu	W	Th	F	Sa	Su	M	Tu	W	Th	F	Sa	Su	M	Tu	W							
2018	1	2	3	4	5	6	7	8	9	10	11	12	13	14	15	16	17	18	19	20	21	22	23	24	25	26	27	28	29	30	31
	-	-	-	-	-	-	-	-	-	-	-	-	-	-	-	-	-	-	-	-	-	-	-	-	-	-	-	-	-	-	

Feb	Th	F	Sa	Su	M	Tu	W	Th	F	Sa	Su	M	Tu	W	Th	F	Sa	Su	M	Tu	W							
2018	1	2	3	4	5	6	7	8	9	10	11	12	13	14	15	16	17	18	19	20	21	22	23	24	25	26	27	28
	-	-	-	-	-	-	-	-	-	-	-	-	-	-	-	-	-	-	-	-	-	-	-	-	-	-	-	-

Mar	Th	F	Sa	Su	M	Tu	W	Th	F	Sa	Su	M	Tu	W	Th	F	Sa	Su	M	Tu	W	Th	F	Sa							
2018	1	2	3	4	5	6	7	8	9	10	11	12	13	14	15	16	17	18	19	20	21	22	23	24	25	26	27	28	29	30	31
	-	-	-	-	-	-	-	-	-	-	-	-	-	-	-	-	-	-	-	-	-	-	-	-	-	-	-	-	-	-	

Apr	Su	M	Tu	W	Th	F	Sa	Su	M	Tu	W	Th	F	Sa	Su	M	Tu	W	Th	F	Sa	Su	M	Tu						
2018	1	2	3	4	5	6	7	8	9	10	11	12	13	14	15	16	17	18	19	20	21	22	23	24	25	26	27	28	29	30
	-	-	-	-	-	-	-	-	-	-	-	-	-	-	-	-	-	-	-	-	-	-	-	-	-	-	-	-	-	-

May	Tu	W	Th	F	Sa	Su	M	Tu	W	Th	F	Sa	Su	M	Tu	W	Th	F	Sa	Su	M	Tu	W	Th							
2018	1	2	3	4	5	6	7	8	9	10	11	12	13	14	15	16	17	18	19	20	21	22	23	24	25	26	27	28	29	30	31
	-	-	-	-	-	-	-	-	-	-	-	-	-	-	-	-	-	-	-	-	-	-	-	-	-	-	-	-	-	-	

June	F	Sa	Su	M	Tu	W	Th	F	Sa	Su	M	Tu	W	Th	F	Sa	Su	M	Tu	W	Th	F	Sa							
2018	1	2	3	4	5	6	7	8	9	10	11	12	13	14	15	16	17	18	19	20	21	22	23	24	25	26	27	28	29	30
	-	-	-	-	-	-	-	-	-	-	-	-	-	-	-	-	-	-	-	-	-	-	-	-	-	-	-	-	-	-

 Reserved



Holiday lettings Provence-Alpes-Côte d'Azur (French Riviera) - France "La Boussarelle"

7
[Book now](#)

Availability calendar - from : june 2018

Jul	Su	M	Tu	W	Th	F	Sa	Su	M	Tu	W	Th	F	Sa	Su	M	Tu	W	Th	F	Sa	Su	M	Tu							
2018	1	2	3	4	5	6	7	8	9	10	11	12	13	14	15	16	17	18	19	20	21	22	23	24	25	26	27	28	29	30	31
-	-	-	-	-	-	-	-	-	-	-	-	-	-	-	-	-	-	-	-	-	-	-	-	-	-	-	-	-	-	-	

Aug	W	Th	F	Sa	Su	M	Tu	W	Th	F	Sa	Su	M	Tu	W	Th	F	Sa	Su	M	Tu	W	Th	F							
2018	1	2	3	4	5	6	7	8	9	10	11	12	13	14	15	16	17	18	19	20	21	22	23	24	25	26	27	28	29	30	31
-	-	-	-	-	-	-	-	-	-	-	-	-	-	-	-	-	-	-	-	-	-	-	-	-	-	-	-	-	-	-	

Reserved

[Month : Next >>](#)

Rental rates - Stone-Built Residence - from 2 to 8 Person(s)

Rates	Night	Weekend	week	2 weeks	Month
<input type="checkbox"/> Low season	-	-	£524* (Saturday)	-	-
<input type="checkbox"/> Mid season	-	-	£793* (Saturday)	-	-
<input type="checkbox"/> High season	-	-	£2643* (Saturday)	-	-

(Check-in day)

[Book now](#)

Booking conditions

• Reservation

→ Payment made upon reservation :
30% of rental sum
→ Payment balance :
45 days before the stay

• rentals

→ Service charges to be added
→ Day tax in addition
→ Cleaning charge levy on departure : £72*
→ Anticipated supplement for :
- baby
- supplementary bed(s)

Accepted methods of payment

• Bank transfer (wire)

[▶ Book now](#)

[▶ Contact the owner](#)

Contact directly the property owners

www.ihacom.co.uk

Advert No.

56242

[>> Book now <<](#)

Contact

Spoken languages



* Converted at the rate indicated : €100 = \$117.29 = £89.59

Advert No. 56242

www.ihacom.co.uk



[>> HOLIDAY LETTINGS](#)

[BOOK DIRECT WITH THE OWNERS](#)