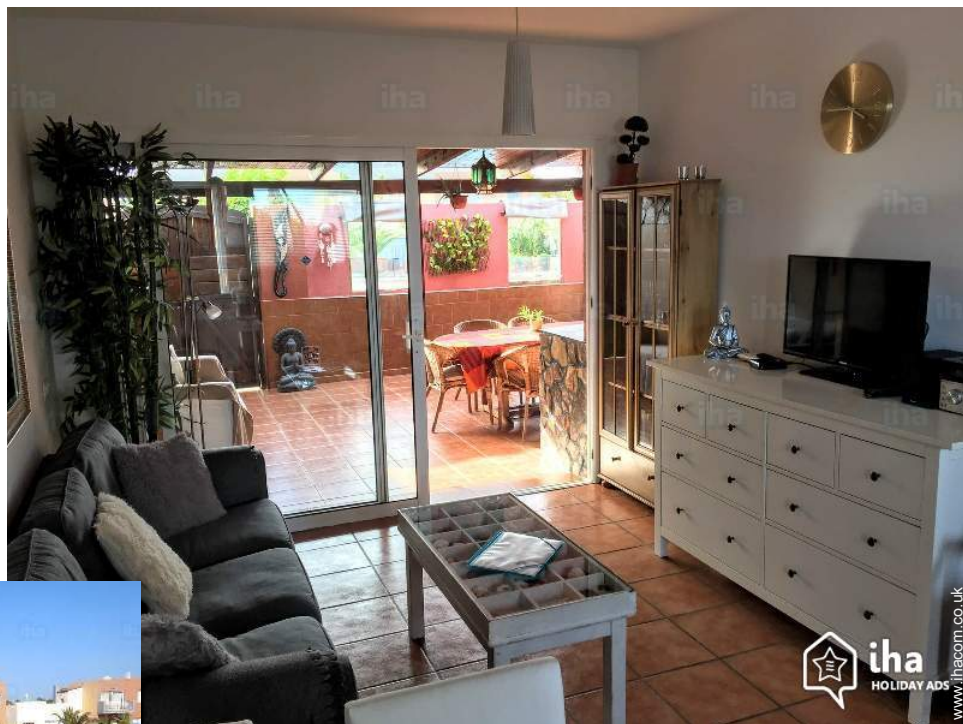


Holiday lettings Corralejo "CASAZEN"



House, detached, single storey, separate entrance, in a(an) Private estate

Setting : pleasant, tranquil

Capacity : from 2 to 4 person(s)

Bedroom(s) : 2

Room(s) : 4

Corralejo - Fuerteventura - Province of Las Palmas
Canary Islands

Reservation : +33 (0) 686876384 (France)

Advert No. 950

www.ihacom.co.uk



>> HOLIDAY LETTINGS

BOOK DIRECT WITH THE OWNERS

Holiday lettings



House, detached, single storey, separate entrance, in a(an) Private estate

- **Ideal for couples, sporty types**
- **View :** unobscured, not overlooked, dominant, sea/ocean, swimming pool
- **Setting :** pleasant, tranquil
- **Exposure :** West

Assets

- **Swimming pool :**
Shared swimming pool, unusual (length 100', width 40'), cascading, illuminated, steps in, outside shower (open from '01 january' till '01 january')
- **Parking :**
Parking uncovered : 1 internal.
- **baby equipment :**
Baby chair



Cascading swimming pool

Surroundings & location



Seaside



Golf



Fishing

Leisure

- **Leisure activities less than 20 km / 12 miles :**

Bathing, snorkelling, scuba diving, jet ski, surfing, windsurfing, kite surfing, tennis, pathway, coastal/forest paths, hiking, mountain bike (path), boat trips, mini-golf, skate board (ramps), ATV/Quad Bike, fishing, deep-sea angling, angling

- **Attractions and relaxation :**

Bar/pub, discotheque, leisure park, sea world, nature reserve

Surroundings

- **Locality :**

Sea/ocean 1.5mi.
Sandy beach 1.5mi.
Rocky beach 1.5mi.
Nudist beach 0.93mi.
9 hole golf course 0.62mi.
18 hole golf course 12.5mi.
Windsurfing spots 1.25mi.
Surfing spots 1.25mi.
Watersports centre 1.25mi.

- **Amenities :**

Town centre 1.25mi.
Bus stop / bus station 0.3mi.
Bike/mountain bike hire 0.3mi.
Scooter/motorbike hire 0.3mi.
Car rental 0.3mi.
Breadshop 990'
Local shops 0.3mi.
Supermarket 0.3mi.
High class retailers 1.25mi.
Hairdressing salon 1.25mi.
Internet cafe 0.3mi.
Cash point 0.93mi.
Chemist 1.25mi.
Doctor 1.25mi.



Interior layout



patio



master bedroom

Exterior

- **Outside accommodation :**
Terrace 215 Sq.ft., covered terrace 270 Sq.ft.
- **Outside setting :**
Private courtyard 215 Sq.ft.
- **Outside amenities :**
Summer living area, BBQ, 1 sun recliner(s)



large bedroom

Interior

- **Receive up to :**
from 2 to 4 person(s) (4 adults)
- **Liveable floor area :**
970 Sq.ft.
- **Interior layout :**
4 Room(s), 2 bedroom(s), 1 shower room, 1 WC, living room 160 Sq.ft., sitting room 215 Sq.ft., american style kitchen, patio
- **Sleeps - bed(s) :**
1 double bed(s), 2 single bed(s)
- **Guest facilities :**
T.V., hi-fi system, DVD player, book collection, high speed internet access, wifi, cupboard, Hanging wardrobe, radio alarmclock, hair dryer, mobile cool air fan, Glazed in area, Curtains, Blinds
- **Appliances :**
Crockery/cutlery, kitchen utensils, cafetiere, electric espresso coffee maker, electric kettle, toaster, juicer, electric cooker, electric hobs, mini-oven, extractor hood, refridgerator, freezer, washing machine, iron, ironing board

Services

- **Washing :**
Sheets, Towels, Linen, Blanket(s), Quilt(s), Pillows
- **House :**
Cleaning, Cleaning on departure, Parking

For your guidance

- **For your guidance**
Children welcome
Pets accepted
Mobile telephone network coverage, personal transport advisable
Water not drinkable
Local voltage supply : 220-240V / 50Hz
Electricity supply : mains



large bedroom

Photo album - 1



Cascading swimming pool



patio



Interior layout



master bedroom



large bedroom

Photo album - 2



large bedroom



Kitchen Area



american style kitchen



sitting room



shower room



shower room



patio

Photo album - 3



patio

view from the living room



terrace

view from the terrace



illuminated

sandy beach



View from the property

Location



Location & Access



GPS coordinates in degrees, minutes, seconds: Latitude 28°43'20"N - Longitude 13°52'4"W ([Dwelling](#))

Address

→ 3 Calle Guirre
Las Fuentes 10
35660 Corralejo

• Airport Fuerteventura

→ Puerto del Rosario, Fuerteventura,
Province of Las Palmas, Canary Islands
→ Distance : 18.5mi.
→ Time : 30'

• Sea port Corralejo

→ Corralejo, Fuerteventura, Province of
Las Palmas, Canary Islands
→ Distance : 1.5mi.
→ Time : 5'

Contact

Spoken
languages



Holiday lettings

Fuerteventura - Province of Las Palmas

"CASAZEN"

Availability calendar - from : september 2019

Sep	Su	M	Tu	W	Th	F	Sa	Su	M	Tu	W	Th	F	Sa	Su	M	Tu	W	Th	F	Sa	Su	M							
2019	1	2	3	4	5	6	7	8	9	10	11	12	13	14	15	16	17	18	19	20	21	22	23	24	25	26	27	28	29	30

Oct	Tu	W	Th	F	Sa	Su	M	Tu	W	Th	F	Sa	Su	M	Tu	W	Th	F	Sa	Su	M	Tu	W	Th							
2019	1	2	3	4	5	6	7	8	9	10	11	12	13	14	15	16	17	18	19	20	21	22	23	24	25	26	27	28	29	30	31

Nov	F	Sa	Su	M	Tu	W	Th	F	Sa	Su	M	Tu	W	Th	F	Sa	Su	M	Tu	W	Th	F	Sa							
2019	1	2	3	4	5	6	7	8	9	10	11	12	13	14	15	16	17	18	19	20	21	22	23	24	25	26	27	28	29	30

Dec	Su	M	Tu	W	Th	F	Sa	Su	M	Tu	W	Th	F	Sa	Su	M	Tu	W	Th	F	Sa	Su	M	Tu							
2019	1	2	3	4	5	6	7	8	9	10	11	12	13	14	15	16	17	18	19	20	21	22	23	24	25	26	27	28	29	30	31

Jan	W	Th	F	Sa	Su	M	Tu	W	Th	F	Sa	Su	M	Tu	W	Th	F	Sa	Su	M	Tu	W	Th	F							
2020	1	2	3	4	5	6	7	8	9	10	11	12	13	14	15	16	17	18	19	20	21	22	23	24	25	26	27	28	29	30	31

Feb	Sa	Su	M	Tu	W	Th	F	Sa	Su	M	Tu	W	Th	F	Sa	Su	M	Tu	W	Th	F	Sa								
2020	1	2	3	4	5	6	7	8	9	10	11	12	13	14	15	16	17	18	19	20	21	22	23	24	25	26	27	28	29	

Mar	Su	M	Tu	W	Th	F	Sa	Su	M	Tu	W	Th	F	Sa	Su	M	Tu	W	Th	F	Sa	Su	M	Tu							
2020	1	2	3	4	5	6	7	8	9	10	11	12	13	14	15	16	17	18	19	20	21	22	23	24	25	26	27	28	29	30	31

Apr	W	Th	F	Sa	Su	M	Tu	W	Th	F	Sa	Su	M	Tu	W	Th	F	Sa	Su	M	Tu	W	Th								
2020	1	2	3	4	5	6	7	8	9	10	11	12	13	14	15	16	17	18	19	20	21	22	23	24	25	26	27	28	29	30	

May	F	Sa	Su	M	Tu	W	Th	F	Sa	Su	M	Tu	W	Th	F	Sa	Su	M	Tu	W	Th	F	Sa	Su							
2020	1	2	3	4	5	6	7	8	9	10	11	12	13	14	15	16	17	18	19	20	21	22	23	24	25	26	27	28	29	30	31

June	M	Tu	W	Th	F	Sa	Su	M	Tu	W	Th	F	Sa	Su	M	Tu	W	Th	F	Sa	Su	M	Tu								
2020	1	2	3	4	5	6	7	8	9	10	11	12	13	14	15	16	17	18	19	20	21	22	23	24	25	26	27	28	29	30	

Reserved
 Mid season
 Low season
 High season



Holiday lettings Corralejo - Canary Islands "CASAZEN"

9

[Book now](#)

Availability calendar - from : june 2020

Jul	W	Th	F	Sa	Su	M	Tu	W	Th	F	Sa	Su	M	Tu	W	Th	F	Sa	Su	M	Tu	W	Th	F							
2020	1	2	3	4	5	6	7	8	9	10	11	12	13	14	15	16	17	18	19	20	21	22	23	24	25	26	27	28	29	30	31

Aug	Sa	Su	M	Tu	W	Th	F	Sa	Su	M	Tu	W	Th	F	Sa	Su	M	Tu	W	Th	F	Sa	Su	M							
2020	1	2	3	4	5	6	7	8	9	10	11	12	13	14	15	16	17	18	19	20	21	22	23	24	25	26	27	28	29	30	31



Reserved



Mid season



Low season



High season

[Month : Next >>](#)

Rental rates - House - from 2 to 4 Person(s)

Rates	Night	Weekend	week	2 weeks	Month
Low season	£66* > 5	-	£455*	£819*	£1365*
Mid season	£73* > 5	-	£510*	£910*	£1547*
High season	£82* > 5	-	£573*	£1047*	£1729*

> Minimum Night

[Book now](#)

Booking conditions

• Reservation

- Payment made upon reservation : 20% of rental sum
- Payment balance : on handing over the keys
- Deposit required : £137*

• rentals

- Service charges included
- Day tax included
- Cleaning charge on departure included

[▶ Book now](#)[▶ Contact the owner](#)

Accepted methods of payment

- Bank transfer (wire) • Cash

Contact directly the property owners

www.ihacom.co.uk

Advert No.

950

[>> Book now <<](#)

Contact

Spoken languages



* Converted at the rate indicated : €100 = \$110 = £91

Advert No. 950

www.ihacom.co.uk[>> HOLIDAY LETTINGS](#)

BOOK DIRECT WITH THE OWNERS