

# Holiday lettings Condò "L'ULIVO"



**Flat-Apartments** ground floor, separate entrance, in a(an) Villa single storey

Setting : bucolic, rural

Capacity : from 1 to 4 person(s)

Bedroom(s) : 2

Room(s) : 2



Clé vacances (1 key)

Condò - Province of Messina (ME) - Sicily

Italy

Advert No. 55302

www.ihacom.co.uk



### Holiday lettings



Flat-Apartments ground floor, separate entrance, in a(an) Villa single storey

- **Ideal for all age groups, family**
- **View :** panoramic, country side, garden/park, farmland, meadow, fantastic sunset
- **Setting :** bucolic, rural
- **Exposure :** South

### Assets

- **Parking :**  
Parking uncovered : internal.

### Surroundings & location



Countryside

#### Leisure

- **Leisure activities less than 20 km / 12 miles :**

Bathing, pedalo, snorkelling, scuba diving, hiking, mountain bike (path), fishing, deep-sea angling, spear fishing

- **Attractions and relaxation :**

Discotheque, restaurant, cinema, park and garden, nature reserve

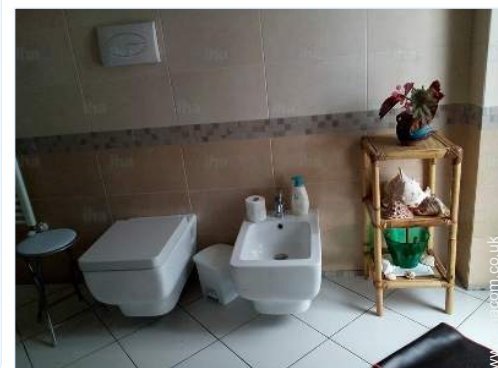
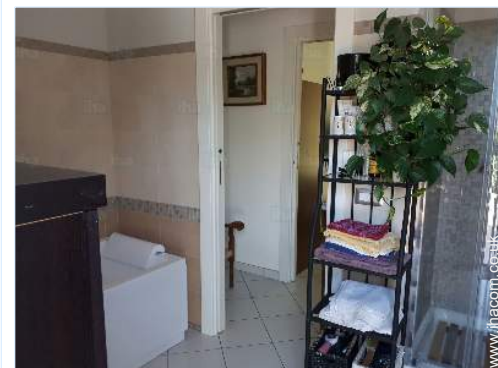
#### Surroundings

- **Locality :**

Sandy beach 1.85mi.  
Shingle beach 6mi.  
Rocky beach 6mi.

- **Amenities :**

Breadshop 0.62mi.  
Supermarket 1.85mi.  
High class retailers 4.5mi.  
Hairdressing salon 990'  
Internet cafe 1.85mi.  
Post office 0.62mi.  
Bank 0.62mi.  
Cash point  
Chemist 660'  
Doctor 660'  
Hospital 6mi.  
Dispensing clinic



Advert No. 55302

[www.ihacom.co.uk](http://www.ihacom.co.uk)





www.ihacom.co.uk

### Interior

- **Receive up to :**  
from 1 to 4 person(s)
- **Liveable floor area :**  
270 Sq.ft.
- **Interior layout :**  
2 Room(s), 2 bedroom(s), sleeping area, bathroom, shower room, WC, tv room, dressing room, laundry room, veranda
- **Sleeps - bed(s) :**  
1 double bed(s), 1 sofa bed(s) 2 pers
- **Guest facilities :**  
T.V., wifi, wardrobe, hair dryer, heated towel rail, fully air conditioned, central heating, Glazed in area, Double glazed

### Exterior

- **Ground surface :**  
0.25 acre.
- **Outside accommodation :**  
Terrace 2, 150 Sq.ft., covered terrace 215 Sq.ft.
- **Outside setting :**  
Private courtyard 0.25 acre., enclosed grounds 0.25 acre., garden 0.25 acre., landscaped garden 0.25 acre., olive grove 0.25 acre., orchard 0.25 acre., kitchen garden 323 Sq.ft.
- **Outside amenities :**  
BBQ, garden seat(s), arbour, parasol, sun recliner(s)



www.ihacom.co.uk

### Services

- **Washing :**  
Sheets, Towels, Linen, Beach towels, Blanket(s), Quilt(s), Pillows
- **House :**  
Cleaning on departure, Caretaker/concierge, Parking
- **Personnel :**  
Staff
- **Restauration :**  
Breakfast, BBQ meal, Half board, Full board, Locally produced meals

### For your guidance

- **For your guidance**  
Children welcome  
Pets accepted  
Present on site : pets, farm animals  
Mobile telephone network coverage, personal transport advisable  
Water : hot/cold  
Local voltage supply : 110-120V / 60Hz  
Electricity supply : shared generator
- **Handicapped people welcome**  
Wheelchair access

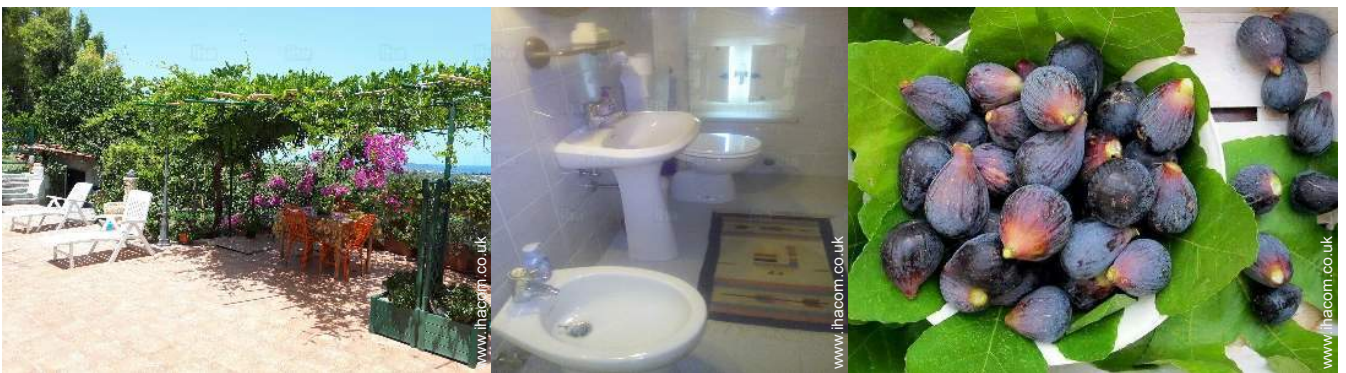


www.ihacom.co.uk

Photo album - 1



Photo album - 2



### Location



### Location & Access



GPS coordinates in degrees, minutes, seconds: Latitude 38°10'29"N - Longitude 15°19'29"E (Dwelling)

#### Address

→ via garipoli  
98040 Condò

#### • Train station Messina Marittima

→ Messina, Province of Messina, Sicily, Italy

→ Distance : 18.5mi.

→ Time : 40'

#### • Motorway (junction) A20

→ Milazzo, Province of Messina, Sicily, Italy

→ Distance : 6mi.

→ Time : 15'

#### • Airport Catania Fontanarossa

→ Catania, Province of Catania, Sicily, Italy

→ Distance : 62mi.

→ Time : 1h45'

- Milazzo : (6mi.)
- Taormina : (25mi.)
- Giardini Naxos : (25mi.)

### Contact

Spoken languages



# Holiday lettings Condò - Italy "L'ULIVO"

7  
[Book now](#)

## Availability calendar - from : september 2018

Sep	Sa	Su	M	Tu	W	Th	F	Sa	Su	M	Tu	W	Th	F	Sa	Su	M	Tu	W	Th	F	Sa	Su	M	Tu	W	Th	F	Sa	Su
2018	1	2	3	4	5	6	7	8	9	10	11	12	13	14	15	16	17	18	19	20	21	22	23	24	25	26	27	28	29	30

Oct	M	Tu	W	Th	F	Sa	Su	M	Tu	W	Th	F	Sa	Su	M	Tu	W	Th	F	Sa	Su	M	Tu	W	Th	F	Sa	Su	M	Tu	W
2018	1	2	3	4	5	6	7	8	9	10	11	12	13	14	15	16	17	18	19	20	21	22	23	24	25	26	27	28	29	30	31
	-	-	-	-	-	-	-	-	-	-	-	-	-	-	-	-	-	-	-	-	-	-	-	-	-	-	-	-	-	-	-

Nov	Th	F	Sa	Su	M	Tu	W	Th	F	Sa	Su	M	Tu	W	Th	F	Sa	Su	M	Tu	W	Th	F	Sa	Su	M	Tu	W	Th	F
2018	1	2	3	4	5	6	7	8	9	10	11	12	13	14	15	16	17	18	19	20	21	22	23	24	25	26	27	28	29	30
	-	-	-	-	-	-	-	-	-	-	-	-	-	-	-	-	-	-	-	-	-	-	-	-	-	-	-	-	-	-

Dec	Sa	Su	M	Tu	W	Th	F	Sa	Su	M	Tu	W	Th	F	Sa	Su	M	Tu	W	Th	F	Sa	Su	M	Tu	W	Th	F	Sa	Su	M
2018	1	2	3	4	5	6	7	8	9	10	11	12	13	14	15	16	17	18	19	20	21	22	23	24	25	26	27	28	29	30	31
	-	-	-	-	-	-	-	-	-	-	-	-	-	-	-	-	-	-	-	-	-	-	-	-	-	-	-	-	-	-	-

Jan	Tu	W	Th	F	Sa	Su	M	Tu	W	Th	F	Sa	Su	M	Tu	W	Th	F	Sa	Su	M	Tu	W	Th	F	Sa	Su	M	Tu	W	Th
2019	1	2	3	4	5	6	7	8	9	10	11	12	13	14	15	16	17	18	19	20	21	22	23	24	25	26	27	28	29	30	31
	-	-	-	-	-	-	-	-	-	-	-	-	-	-	-	-	-	-	-	-	-	-	-	-	-	-	-	-	-	-	-


Feb	F	Sa	Su	M	Tu	W	Th	F	Sa	Su	M	Tu	W	Th	F	Sa	Su	M	Tu	W	Th	F	Sa	Su	M	Tu	W	Th	
2019	1	2	3	4	5	6	7	8	9	10	11	12	13	14	15	16	17	18	19	20	21	22	23	24	25	26	27	28	
	-	-	-	-	-	-	-	-	-	-	-	-	-	-	-	-	-	-	-	-	-	-	-	-	-	-	-	-	-

Mar	F	Sa	Su	M	Tu	W	Th	F	Sa	Su	M	Tu	W	Th	F	Sa	Su	M	Tu	W	Th	F	Sa	Su	M	Tu	W	Th	F	Sa	Su
2019	1	2	3	4	5	6	7	8	9	10	11	12	13	14	15	16	17	18	19	20	21	22	23	24	25	26	27	28	29	30	31
	-	-	-	-	-	-	-	-	-	-	-	-	-	-	-	-	-	-	-	-	-	-	-	-	-	-	-	-	-	-	-

Apr	M	Tu	W	Th	F	Sa	Su	M	Tu	W	Th	F	Sa	Su	M	Tu	W	Th	F	Sa	Su	M	Tu	W	Th	F	Sa	Su	M	Tu
2019	1	2	3	4	5	6	7	8	9	10	11	12	13	14	15	16	17	18	19	20	21	22	23	24	25	26	27	28	29	30
	-	-	-	-	-	-	-	-	-	-	-	-	-	-	-	-	-	-	-	-	-	-	-	-	-	-	-	-	-	-

May	W	Th	F	Sa	Su	M	Tu	W	Th	F	Sa	Su	M	Tu	W	Th	F	Sa	Su	M	Tu	W	Th	F	Sa	Su	M	Tu	W	Th	F
2019	1	2	3	4	5	6	7	8	9	10	11	12	13	14	15	16	17	18	19	20	21	22	23	24	25	26	27	28	29	30	31
	-	-	-	-	-	-	-	-	-	-	-	-	-	-	-	-	-	-	-	-	-	-	-	-	-	-	-	-	-	-	-

June	Sa	Su	M	Tu	W	Th	F	Sa	Su	M	Tu	W	Th	F	Sa	Su	M	Tu	W	Th	F	Sa	Su	M	Tu	W	Th	F	Sa	Su
2019	1	2	3	4	5	6	7	8	9	10	11	12	13	14	15	16	17	18	19	20	21	22	23	24	25	26	27	28	29	30
	-	-	-	-	-	-	-	-	-	-	-	-	-	-	-	-	-	-	-	-	-	-	-	-	-	-	-	-	-	-

 High season

Holiday lettings  
Province of Messina - Sicily  
"L'ULIVO"


8

[Book now](#)

Availability calendar - from : june 2019

Jul	M	Tu	W	Th	F	Sa	Su	M	Tu	W	Th	F	Sa	Su	M	Tu	W	Th	F	Sa	Su	M	Tu	W							
2019	1	2	3	4	5	6	7	8	9	10	11	12	13	14	15	16	17	18	19	20	21	22	23	24	25	26	27	28	29	30	31
	-	-	-	-	-	-	-	-	-	-	-	-	-	-	-	-	-	-	-	-	-	-	-	-	-	-	-	-	-	-	

Aug	Th	F	Sa	Su	M	Tu	W	Th	F	Sa	Su	M	Tu	W	Th	F	Sa	Su	M	Tu	W	Th	F	Sa							
2019	1	2	3	4	5	6	7	8	9	10	11	12	13	14	15	16	17	18	19	20	21	22	23	24	25	26	27	28	29	30	31
	-	-	-	-	-	-	-	-	-	-	-	-	-	-	-	-	-	-	-	-	-	-	-	-	-	-	-	-	-	-	

 High season

[Month : Next >>](#)

Rental rates - Flat-Apartments - from 1 to 4 Person(s)

Rates	Night	Weekend	week	2 weeks	Month
 Low season	£45*	-	£267*	£445*	-
 Mid season	£45*	-	£267*	£445*	-
 High season	£45*	-	£267*	£445*	-

[Book now](#)

Booking conditions

• **Reservation**

→ Payment made upon reservation :  
50% of rental sum  
→ Payment balance :  
on handing over the keys

• **rentals**

→ Service charges included  
→ Day tax included  
→ Cleaning charge on departure included  
→ Anticipated supplement for :  
- supplementary bed(s)

[▶ Book now](#)

[▶ Contact the owner](#)

Accepted methods of payment

• Bank transfer (wire) • Cash

Contact directly the property owners

[www.ihacom.co.uk](http://www.ihacom.co.uk)

Advert No.

55302

[>> Book now <<](#)

Contact

Spoken languages



\* Converted at the rate indicated : €100 = \$116.85 = £89

Advert No. 55302

[www.ihacom.co.uk](http://www.ihacom.co.uk)



[>> HOLIDAY LETTINGS](#)

[BOOK DIRECT WITH THE OWNERS](#)