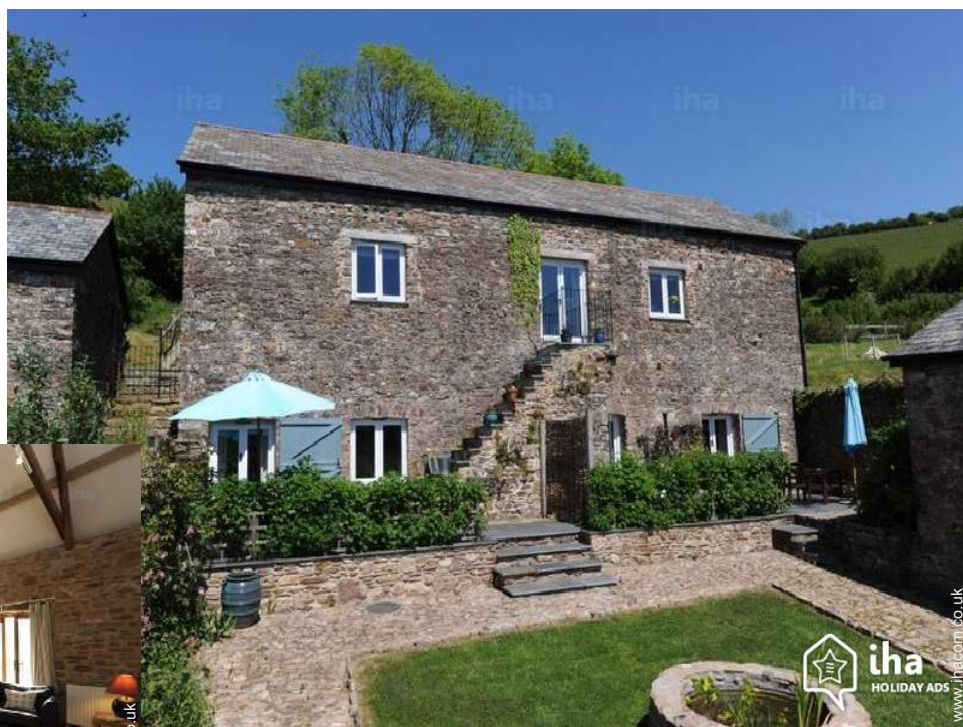


Holiday lettings Combe Martin Former Barn

A barn conversion offering luxury accommodation near the North Devon coast. Converted to a high standard, providing ideal accommodation for families, friends sharing and couples.



Former Barn, semi-detached, 2 floors, separate entrance, in a(an) Private property

Setting : peaceful, suitable for a relaxing break

Capacity : from 2 to 6 person(s)
Bedroom(s) : 3

Combe Martin - Devon - South West England
England

Reservation : +44 (0) 1271889379 (United Kingdom)

Advert No. 54938

www.ihacom.co.uk



>> HOLIDAY LETTINGS

BOOK DIRECT WITH THE OWNERS

Holiday lettings



Former Barn, semi-detached, 2 floors, separate entrance, in a(an) Private property

- **Ideal for all age groups, large families**
- **View :** panoramic, country side, garden/park, farmland, meadow
- **Setting :** peaceful, suitable for a relaxing break

" Our barns are set in a truly magical setting on the North Devon coast with wonderful views across the valley. The Barn is the largest of our three cottages. It has a large open plan living/dining room and luxury kitchen with wonderful views from its own Juliet balcony. There are three bedrooms all of which are en-suite; two double bedrooms and one twin. The first of the three double bedrooms is located on the upper floor and has a limestone en-suite shower room. Down stairs there are two large bedrooms, the first with dressing room and large en-suite limestone shower room, French doors to terrace and courtyard garden. The second has an en-suite shower/bathroom also with French doors to the terrace and courtyard garden. There is a secret door between one of our other cottages and the Barn linking the upstairs space if required. The two properties can thus be taken together with five en-suite bedrooms sleeping 10 in total. Ideal for large family holidays or special occasions. Up to two dogs are welcome and there is a fully enclosed area and a three acre field to exercise them in. "

Surroundings & location



" The barns are situated within North Devon's Area of Outstanding Natural Beauty on the edge of Exmoor National Park. The comfortable accommodation offers a rural escape to this beautiful and unspoilt stretch of English coastline and access to the many family activities of the area, including some of the finest beaches in the country. The village of Combe Martin is less than a mile away winding down its valley to two small rock and shingle beaches with sand at low tide. It has a rich history and has been famous for its silver mines and strawberry fields. Combe Martin is an excellent walking centre adjoining Exmoor with outstanding coastal walks along the South West Coast Path all within a short distance of our cottages. Exmoor has been designated as one of three of Britains Dark Sky Reserves, making it the ideal place to wonder at the night sky. There are also many fantastic countryside walks across Exmoor where wild deer and the famous Exmoor ponies run free. Within a 20 minute drive you can visit the vast sandy beaches of Woolacombe, Saunton and Croyde, all offering excellent opportunities for surfing, wind-surfing, paddle-boarding and many other great water sports, or just relaxing on the beach. For those wanting town life, the town of Barnstaple is just 11 miles away and offers the usual retail outlets, a leisure centre, train station and much more. "

Leisure

- **Leisure activities less than 20 km / 12 miles :**

Bathing, jet ski, surfing, windsurfing, sailing, kite surfing, canoeing, golf, tennis, squash, riding school, hiking, rock climbing, boat trips, horse trekking, mini-golf, skate board (ramps), ATV/Quad Bike, go-karting, ten-pin bowling, clay pidgeon shooting, fishing, deep-sea angling, angling

- **Supervised :**

Riding school

- **Attractions and relaxation :**

Bar/pub, restaurant, cinema, park and garden, zoo/animal park, nature reserve, art gallery, historical site, museum, theatre, beauticians, fitness centre

Surroundings

- **Locality :**

Sea/ocean 0.62mi.
Sandy beach 0.62mi.
Shingle beach 0.62mi.
Rocky beach 0.62mi.
Public swimming pool 0.93mi.
Public tennis court 6mi.

9 hole golf course 4.5mi.
18 hole golf course 4.5mi.
Windsurfing spots 9mi.
Surfing spots 9mi.
Forest 0.3mi.

- **Amenities :**

Village centre 0.62mi.
Bus stop / bus station 0.3mi.
Bike/mountain bike hire 12.5mi.
Breadshop 0.62mi.
Local shops 0.62mi.
Supermarket 0.62mi.
Hairdressing salon 0.62mi.
Internet cafe 0.62mi.
Post office 0.62mi.
Bank 0.62mi.
Cash point 0.62mi.
Chemist 0.62mi.
Doctor 0.62mi.
Hospital 9mi.



Kitchen Area



dining area



bathroom

Interior

- **Receive up to :**

from 2 to 6 person(s)

- **Interior layout :**

3 bedroom(s), 3 bathroom, 3 shower room, 4 WC, dining room, dining area, patio, veranda

- **Sleeps - bed(s) :**

2 king-size bed(s), 2 single bed(s)

- **Guest facilities :**

T.V., DVD player, board games, t.v points, cable/satelite, wifi, wardrobe, cupboard, Hanging wardrobe, hair dryer, heated towel rail, power shower, central heating, Curtains, Blinds, Double glazed, fire alarm

- **Appliances :**

Crockery/cuttlery, kitchen utensils, cafetiére, electric kettle, toaster, electric cooker, electric hobs, oven, micro-wave oven, refridgerator, freezer, dish washer, washing machine, vacuum cleaner, iron, ironing board

Exterior

- **Outside accommodation :**

Terrace, balcony

- **Outside setting :**

Private courtyard, stream, wells/spring

- **Outside amenities :**

BBQ, garden table(s), garden seat(s), parasol, garden seated area, sun lounger



Winter

Services

- **Washing :**

Sheets (1 X / per week), Towels (1 X / per week), Linen (1 X / per week), Blanket(s) (1 X / per week), Quilt(s) (1 X / per week), Pillows (1 X / per week)

For your guidance

- **For your guidance**

Children welcome

Pets accepted under certain conditions (ask the owner)

Non smoking rental

Water : hot/cold

Electricity supply : mains



bedroom

Photo album - 1



dining area



Kitchen Area



bathroom



bedroom

Photo album - 2



Winter



dining room



garden/park view



single bed(s)



view over farmland

Location



Location & Access

" Our barns are set on a non-working farm just outside the village of Combe Martin. Accessed down a long private driveway, away from any roads. Access to the cottages is on the upper floors into the living/dining areas with the bedrooms located on the ground floors with access from here to the separate terraces. There are steps down to each cottage making them unsuitable for the disabled. There is ample parking for each cottage. "



GPS coordinates in degrees, minutes, seconds: Latitude 51°11'38"N - Longitude 3°59'26"W ([Dwelling](#))

Address

→ Nutcombe Farm
Nutcombe Hill
EX34 0PQ Combe Martin

● **Motorway (junction) M5**

→ Bridgwater, Somerset, South West
England, England
→ Distance : 50mi.

- Combe Martin : (0.62mi.)
- Barnstaple : (15.5mi.)

Contact

Spoken languages



Holiday lettings Combe Martin - England Former Barn

7
[Book now](#)

Availability calendar - from : september 2017

Sep	F	Sa	Su	M	Tu	W	Th	F	Sa	Su	M	Tu	W	Th	F	Sa	Su	M	Tu	W	Th	F	Sa							
2017	1	2	3	4	5	6	7	8	9	10	11	12	13	14	15	16	17	18	19	20	21	22	23	24	25	26	27	28	29	30

Oct	Su	M	Tu	W	Th	F	Sa	Su	M	Tu	W	Th	F	Sa	Su	M	Tu	W	Th	F	Sa	Su	M	Tu							
2017	1	2	3	4	5	6	7	8	9	10	11	12	13	14	15	16	17	18	19	20	21	22	23	24	25	26	27	28	29	30	31
	-	-	-	-	-	-	-	-	-	-	-	-	-	-	-	-	-	-	-	-	-	-	-	-	-	-	-	-	-	-	

Nov	W	Th	F	Sa	Su	M	Tu	W	Th	F	Sa	Su	M	Tu	W	Th	F	Sa	Su	M	Tu	W	Th							
2017	1	2	3	4	5	6	7	8	9	10	11	12	13	14	15	16	17	18	19	20	21	22	23	24	25	26	27	28	29	30
	-	-	-	-	-	-	-	-	-	-	-	-	-	-	-	-	-	-	-	-	-	-	-	-	-	-	-	-	-	-

Dec	F	Sa	Su	M	Tu	W	Th	F	Sa	Su	M	Tu	W	Th	F	Sa	Su	M	Tu	W	Th	F	Sa	Su							
2017	1	2	3	4	5	6	7	8	9	10	11	12	13	14	15	16	17	18	19	20	21	22	23	24	25	26	27	28	29	30	31
	-	-	-	-	-	-	-	-	-	-	-	-	-	-	-	-	-	-	-	-	-	-	-	-	-	-	-	-	-	-	

Jan	M	Tu	W	Th	F	Sa	Su	M	Tu	W	Th	F	Sa	Su	M	Tu	W	Th	F	Sa	Su	M	Tu	W							
2018	1	2	3	4	5	6	7	8	9	10	11	12	13	14	15	16	17	18	19	20	21	22	23	24	25	26	27	28	29	30	31
	-	-	-	-	-	-	-	-	-	-	-	-	-	-	-	-	-	-	-	-	-	-	-	-	-	-	-	-	-	-	

Feb	Th	F	Sa	Su	M	Tu	W	Th	F	Sa	Su	M	Tu	W	Th	F	Sa	Su	M	Tu	W							
2018	1	2	3	4	5	6	7	8	9	10	11	12	13	14	15	16	17	18	19	20	21	22	23	24	25	26	27	28
	-	-	-	-	-	-	-	-	-	-	-	-	-	-	-	-	-	-	-	-	-	-	-	-	-	-	-	-

Mar	Th	F	Sa	Su	M	Tu	W	Th	F	Sa	Su	M	Tu	W	Th	F	Sa	Su	M	Tu	W	Th	F	Sa							
2018	1	2	3	4	5	6	7	8	9	10	11	12	13	14	15	16	17	18	19	20	21	22	23	24	25	26	27	28	29	30	31
	-	-	-	-	-	-	-	-	-	-	-	-	-	-	-	-	-	-	-	-	-	-	-	-	-	-	-	-	-	-	

Apr	Su	M	Tu	W	Th	F	Sa	Su	M	Tu	W	Th	F	Sa	Su	M	Tu	W	Th	F	Sa	Su	M	Tu						
2018	1	2	3	4	5	6	7	8	9	10	11	12	13	14	15	16	17	18	19	20	21	22	23	24	25	26	27	28	29	30
	-	-	-	-	-	-	-	-	-	-	-	-	-	-	-	-	-	-	-	-	-	-	-	-	-	-	-	-	-	-

May	Tu	W	Th	F	Sa	Su	M	Tu	W	Th	F	Sa	Su	M	Tu	W	Th	F	Sa	Su	M	Tu	W	Th							
2018	1	2	3	4	5	6	7	8	9	10	11	12	13	14	15	16	17	18	19	20	21	22	23	24	25	26	27	28	29	30	31
	-	-	-	-	-	-	-	-	-	-	-	-	-	-	-	-	-	-	-	-	-	-	-	-	-	-	-	-	-	-	

June	F	Sa	Su	M	Tu	W	Th	F	Sa	Su	M	Tu	W	Th	F	Sa	Su	M	Tu	W	Th	F	Sa							
2018	1	2	3	4	5	6	7	8	9	10	11	12	13	14	15	16	17	18	19	20	21	22	23	24	25	26	27	28	29	30
	-	-	-	-	-	-	-	-	-	-	-	-	-	-	-	-	-	-	-	-	-	-	-	-	-	-	-	-	-	-

 Reserved



Availability calendar - from : june 2018

Jul	Su	M	Tu	W	Th	F	Sa	Su	M	Tu	W	Th	F	Sa	Su	M	Tu	W	Th	F	Sa	Su	M	Tu							
2018	1	2	3	4	5	6	7	8	9	10	11	12	13	14	15	16	17	18	19	20	21	22	23	24	25	26	27	28	29	30	31
-	-	-	-	-	-	-	-	-	-	-	-	-	-	-	-	-	-	-	-	-	-	-	-	-	-	-	-	-	-	-	

Aug	W	Th	F	Sa	Su	M	Tu	W	Th	F	Sa	Su	M	Tu	W	Th	F	Sa	Su	M	Tu	W	Th	F							
2018	1	2	3	4	5	6	7	8	9	10	11	12	13	14	15	16	17	18	19	20	21	22	23	24	25	26	27	28	29	30	31
-	-	-	-	-	-	-	-	-	-	-	-	-	-	-	-	-	-	-	-	-	-	-	-	-	-	-	-	-	-	-	

Reserved

[Month : Next >>](#)



dining area

Kitchen Area

Booking conditions

- **Reservation**
→ Payment made upon reservation : 30% of rental sum
- **rentals**
→ Service charges included
→ Anticipated supplement for :
- animals

Accepted methods of payment

- Bank transfer (wire) • Cheque

Contact

Spoken languages

[▶ Book now](#)

[▶ Contact the owner](#)

Contact directly the property owners

www.ihacom.co.uk
Advert No.
54938
[>> Book now <<](#)