

# Holiday lettings Mediterranean Sea "Villa Clothilde"

Spacious floor of villa with very beautiful panoramic views over the sea and the mountains of Carthage.



Fleurs du Soleil

Villa, detached, 1 floor, shared entrance,  
in a(an) Private property

Setting : pleasant

Capacity : from 2 to 6 person(s)

Bedroom(s) : 2

Carthage - Tunis Governorate

Tunisia

Reservation : +216 (0) 53932855 (Tunisia)

Advert No. 13847

www.ihacom.co.uk



>> HOLIDAY LETTINGS

BOOK DIRECT WITH THE OWNERS

### Holiday lettings



Villa, detached, 1 floor, shared entrance, in a(an) Private property

- **Ideal for all age groups**
- **View :** panoramic, sea/ocean, mountain, garden/park, monument, street/avenue
- **Setting :** pleasant
- **Exposure :** North

" Beautiful floor of villa combines charm and modernity. Its access is independent through the Garden: an oasis of calm and greenery. All kinds of amenities in the entourage: laundry, cafes, restaurants, very good tapestries and delicacies. Tunis Carthage airport is 15 minutes by car. No problem parking in front of the House there is still room! The train station is just 3 minutes on foot. Otherwise it is easy to find taxis! The House offers all the comfort. The decor is carefully chosen. The House has two bedrooms with excellent bedding. Two lounges with views of the sea, a beautiful bathroom with shower, a veranda with views of the mountain of Carthage. The kitchen is fully and richly equipped. There is also a flat screen TV. (bunch of French and other channels) and free WIFI. Central heating and air conditioner. You're entirely at home. "

### Assets

- **Parking :**  
Parking uncovered : 2 off road.

### Surroundings & location



" Carthage is a city which is located 20 km from the capital Tunis. It is a very residential area with its beautiful villas, lots of greenery and its beautiful beaches. Carthage you find the Presidential Palace which was inhabited by all Tunisian presidents. Carthage you find most of the Roman ruins with many museums, the Saint Louis Cathedral, the Roman, Roman cemeteries amphitheatre. Hotels, restaurants, are nearby. Carthage Byrsa is characterized with its beautiful Lake, with a lot of small fishing boats, where you can buy your fresh fish in the morning and enjoy the entourage. "

#### Leisure

- **Leisure activities less than 20 km / 12 miles :**

Bathing, pedalo, water skiing, jet ski, windsurfing, sailing, golf, tennis, pathway, horse-drawn carriage, ATV/Quad Bike, ten-pin bowling, fishing, angling

- **Attractions and relaxation :**

Bar/pub, discotheque, restaurant, park and garden, leisure park, zoo/animal park, art gallery, historical site, museum, theatre, festivals, antiques & bric-a-brac, local craftshop, thalassotherapy centre, sauna, steam baths, beauticians, fitness centre

#### Surroundings

- **Locality :**

Sea/ocean 0.5mi.  
Sandy beach 0.5mi.  
Rocky beach 0.3mi.  
Cliff 0.62mi.  
Lake 330'  
Mountain range 0.62mi.  
Marina 1.25mi.

- **Amenities :**

Town centre 0.3mi.  
Tube station 0.3mi.  
Car rental 660'  
Breadshop 0.5mi.  
Local shops 660'  
Supermarket 0.5mi.  
Hairdressing salon 990'  
Post office 0.62mi.  
Bank 660'  
Cash point 660'  
Chemist 0.5mi.  
Doctor 0.5mi.  
Hospital 0.62mi.  
Dispensing clinic 0.62mi.



leisure pursuits nearby



tv room



sitting room

### Interior

- **Receive up to :**  
from 2 to 6 person(s) (2 adults, 4 children)
- **Liveable floor area :**  
1,300 Sq.ft.
- **Interior layout :**  
2 bedroom(s), 1 bathroom, 1 shower room, 2 WC, living room 194 Sq.ft., sitting room 270 Sq.ft., separate kitchen, dining area, tv room, veranda
- **Sleeps - bed(s) :**  
2 double bed(s), 2 single bed(s), 4 sofa bed(s) 1 pers
- **Guest facilities :**  
T.V., videoplayer, DVD player, t.v points, cable/satelite, cupboard, hair dryer, fully air conditioned, central heating, Glazed in area, Curtains, Double glazed, entry phone system
- **Appliances :**  
Crockery/cuttlery, kitchen utensils, cafetiere, electric coffee maker, electric espresso coffee maker, electric kettle, toaster, juicer, food processor, electric hobs, oven, micro-wave oven, electric chip fryer, extractor hood, refridgerator, freezer, washing machine, vacuum cleaner, iron, ironing board

### Exterior

- **Ground surface :**  
6,500 Sq.ft.
- **Outside accommodation :**  
Lanai 215 Sq.ft.
- **Outside amenities :**  
Garden seated area



sitting room

### Services

- **Washing :**  
Sheets, Towels, Linen, Blanket(s), Quilt(s), Pillows
- **House :**  
Cleaning supplement (7 X / per week),  
Cleaning on departure supplement (+£22\*)

### For your guidance

- **For your guidance**  
Children welcome  
Pets accepted  
Present on site : pets  
Mobile telephone network coverage  
Water : hot/cold  
Local voltage supply : 110-120V / 60Hz  
Electricity supply : individual generator



sitting room

Photo album - 1



tv room



leisure pursuits nearby



sitting room



sitting room



sitting room

Photo album - 2



sitting room



sitting room



tv room



tv room



large bedroom



bedroom



bedroom



bedroom



large bedroom



bedroom



large bedroom



dining area

Photo album - 3



kitchen



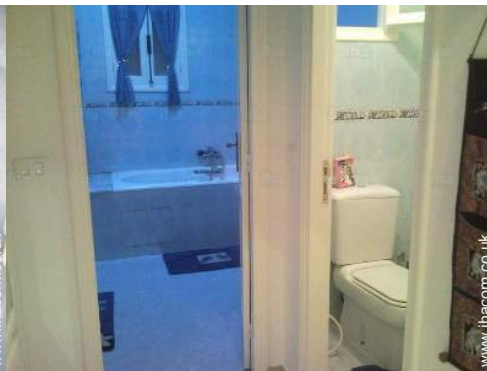
kitchen



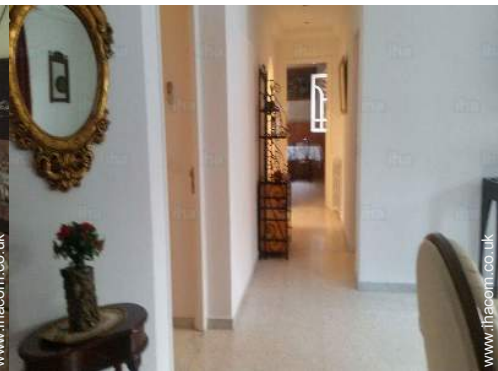
bathroom



bathroom



WC



interior



veranda



view from the bedroom



view from the kitchen



veranda



View from the property




view from the sitting-room

### Location



### Location & Access

" With the Tunis car take Highway of la goulette and La Marsa highway. Or take the TGM de Tunis train that stops you just a few minutes from the House. OR take a taxi from the airport. "

 GPS coordinates in degrees, minutes, seconds: Latitude 36°50'42"N - Longitude 10° 19'22"E ([Dwelling](#))

#### Address

→ Avenue Habib Bourguiba  
2016 Carthage

#### • Airport Tunis Carthage

→ Tunis, Tunis Governorate, Tunisia  
→ Distance : 7,5mi.

#### • Sea port Tunis La Goulette

→ Tunis, Tunis Governorate, Tunisia  
→ Distance : 3mi.

- La Marsa : (1.25mi.)
- Gammarth : (2.5mi.)
- Berges du Lac : (1.85mi.)

### Contact

Spoken languages



# Holiday lettings Tunis Governorate - Mediterranean Sea "Villa Clothilde"

[Book now](#)

## Availability calendar - from : november 2017

Nov	W	Th	F	Sa	Su	M	Tu	W	Th	F	Sa	Su	M	Tu	W	Th	F	Sa	Su	M	Tu	W	Th							
2017	1	2	3	4	5	6	7	8	9	10	11	12	13	14	15	16	17	18	19	20	21	22	23	24	25	26	27	28	29	30
																					-	-	-	-	-	-	-	-	-	-

Dec	F	Sa	Su	M	Tu	W	Th	F	Sa	Su	M	Tu	W	Th	F	Sa	Su	M	Tu	W	Th	F	Sa	Su							
2017	1	2	3	4	5	6	7	8	9	10	11	12	13	14	15	16	17	18	19	20	21	22	23	24	25	26	27	28	29	30	31
	-	-	-	-	-	-	-	-	-	-	-	-	-	-	-	-	-	-	-	-	-	-	-	-	-	-	-	-	-	-	

Jan	M	Tu	W	Th	F	Sa	Su	M	Tu	W	Th	F	Sa	Su	M	Tu	W	Th	F	Sa	Su	M	Tu	W							
2018	1	2	3	4	5	6	7	8	9	10	11	12	13	14	15	16	17	18	19	20	21	22	23	24	25	26	27	28	29	30	31
	-	-	-	-	-	-	-	-	-	-	-	-	-	-	-	-	-	-	-	-	-	-	-	-	-	-	-	-	-	-	

Feb	Th	F	Sa	Su	M	Tu	W	Th	F	Sa	Su	M	Tu	W	Th	F	Sa	Su	M	Tu	W								
2018	1	2	3	4	5	6	7	8	9	10	11	12	13	14	15	16	17	18	19	20	21	22	23	24	25	26	27	28	
	-	-	-	-	-	-	-	-	-	-	-	-	-	-	-	-	-	-	-	-	-	-	-	-	-	-	-	-	-

Mar	Th	F	Sa	Su	M	Tu	W	Th	F	Sa	Su	M	Tu	W	Th	F	Sa	Su	M	Tu	W	Th	F	Sa							
2018	1	2	3	4	5	6	7	8	9	10	11	12	13	14	15	16	17	18	19	20	21	22	23	24	25	26	27	28	29	30	31
	-	-	-	-	-	-	-	-	-	-	-	-	-	-	-	-	-	-	-	-	-	-	-	-	-	-	-	-	-	-	

Apr	Su	M	Tu	W	Th	F	Sa	Su	M	Tu	W	Th	F	Sa	Su	M	Tu	W	Th	F	Sa	Su	M							
2018	1	2	3	4	5	6	7	8	9	10	11	12	13	14	15	16	17	18	19	20	21	22	23	24	25	26	27	28	29	30
	-	-	-	-	-	-	-	-	-	-	-	-	-	-	-	-	-	-	-	-	-	-	-	-	-	-	-	-	-	-

May	Tu	W	Th	F	Sa	Su	M	Tu	W	Th	F	Sa	Su	M	Tu	W	Th	F	Sa	Su	M	Tu	W	Th							
2018	1	2	3	4	5	6	7	8	9	10	11	12	13	14	15	16	17	18	19	20	21	22	23	24	25	26	27	28	29	30	31
	-	-	-	-	-	-	-	-	-	-	-	-	-	-	-	-	-	-	-	-	-	-	-	-	-	-	-	-	-	-	

June	F	Sa	Su	M	Tu	W	Th	F	Sa	Su	M	Tu	W	Th	F	Sa	Su	M	Tu	W	Th	F	Sa							
2018	1	2	3	4	5	6	7	8	9	10	11	12	13	14	15	16	17	18	19	20	21	22	23	24	25	26	27	28	29	30
	-	-	-	-	-	-	-	-	-	-	-	-	-	-	-	-	-	-	-	-	-	-	-	-	-	-	-	-	-	-

Jul	Su	M	Tu	W	Th	F	Sa	Su	M	Tu	W	Th	F	Sa	Su	M	Tu	W	Th	F	Sa	Su	M	Tu							
2018	1	2	3	4	5	6	7	8	9	10	11	12	13	14	15	16	17	18	19	20	21	22	23	24	25	26	27	28	29	30	31
	-	-	-	-	-	-	-	-	-	-	-	-	-	-	-	-	-	-	-	-	-	-	-	-	-	-	-	-	-	-	

Aug	W	Th	F	Sa	Su	M	Tu	W	Th	F	Sa	Su	M	Tu	W	Th	F	Sa	Su	M	Tu	W	Th	F							
2018	1	2	3	4	5	6	7	8	9	10	11	12	13	14	15	16	17	18	19	20	21	22	23	24	25	26	27	28	29	30	31
	-	-	-	-	-	-	-	-	-	-	-	-	-	-	-	-	-	-	-	-	-	-	-	-	-	-	-	-	-	-	





# Holiday lettings Carthage - Mediterranean Sea "Villa Clothilde"

9

[Book now](#)



## Availability calendar - from : august 2018

Sep	Sa	Su	M	Tu	W	Th	F	Sa	Su	M	Tu	W	Th	F	Sa	Su	M	Tu	W	Th	F	Sa	Su							
2018	1	2	3	4	5	6	7	8	9	10	11	12	13	14	15	16	17	18	19	20	21	22	23	24	25	26	27	28	29	30
-	-	-	-	-	-	-	-	-	-	-	-	-	-	-	-	-	-	-	-	-	-	-	-	-	-	-	-	-	-	

Oct	M	Tu	W	Th	F	Sa	Su	M	Tu	W	Th	F	Sa	Su	M	Tu	W	Th	F	Sa	Su	M	Tu	W							
2018	1	2	3	4	5	6	7	8	9	10	11	12	13	14	15	16	17	18	19	20	21	22	23	24	25	26	27	28	29	30	31
-	-	-	-	-	-	-	-	-	-	-	-	-	-	-	-	-	-	-	-	-	-	-	-	-	-	-	-	-	-	-	

[Month : Next >>](#)

## Rental rates - Villa - from 2 to 6 Person(s)

Rates	Night	Weekend	week	2 weeks	Month
 Low season	-	-	£246*	-	-
 High season	-	-	£403*	-	-

[Book now](#)

### Booking conditions

- **Reservation**

→ Payment made upon reservation : 25% of rental sum  
 → Payment balance : on handing over the keys  
 → Deposit required

- **rentals**

→ Cleaning charge on departure included

### Accepted methods of payment

• Visa/Delta/Electro • Switch/Maestro • Bank transfer (wire) • American Express • PayPal • Cash

[▶ Book now](#)[▶ Contact the owner](#)

Contact directly the property owners

[www.ihacom.co.uk](http://www.ihacom.co.uk)

Advert No.

13847

[>> Book now <<](#)

### Contact

Spoken languages



\* Converted at the rate indicated : €100 = \$117.29 = £89.59

Advert No. 13847

[www.ihacom.co.uk](http://www.ihacom.co.uk)

