

Holiday lettings Cannes "IMPERIAL CROISETTE A"

Luxurious apartment in 20 meters from the beaches and close to the palais des Congrès



Flat-Apartments 1st floor in a(an)
Modern block of flats 5 floors

Setting : city, luxurious

Capacity : 2 person(s)

Bedroom(s) : 1

Room(s) : 2



Meublés de Tourisme (4 stars)

Cannes - Alpes Maritimes - French Riviera (06) - Provence-Alpes-Côte d'Azur (French Riviera)

France

Reservation : +33 (0) 6 07 82 03 11 (France)

Advert No. 28147

www.ihacom.co.uk



>> HOLIDAY LETTINGS

BOOK DIRECT WITH THE OWNERS

Holiday lettings



Flat-Apartments 1st floor in a(an) Modern block of flats 5 floors

- **Ideal for couples, seminar**
- **View : town**
- **Setting : city, luxurious**
- **Exposure : South**

" This luxurious apartment with designer furniture is located between the Carlton hotel and the hotel Martinez. The building is very chic with a lift. The entrance takes you in the lounge with a White leather sofa and a kitchen fully equipped American and then the House, which is separated from the lounge by 2 sliding mirror doors. Then, a large bathroom. It is at the centre of all shops, casinos, cinemas, restaurants, etc... You'll find 2 not on the famous Croisette and its beaches of fine sand. The apartment has all the comfort you want with a heating and air conditioning as well as wifi. "

Surroundings & location



" It is at the centre of all shops, casinos, cinemas, restaurants, etc... You are in the centre of the beaches of La Croisette and close to the Congress Palace. The famous rue d'Antibes is just behind the rue Rouaze with these boutiques. You can take the shuttle boat to get on the Lérins Islands. "

Leisure

- **Leisure activities less than 20 km / 12 miles :**

Bathing, pedalo, snorkelling, scuba diving, scuba diving (Standard diving dress), banana boat, water skiing, jet ski, golf, tennis, riding school, coastal/forest paths, hiking, parascending, flying (club), glider (club), boat trips, horse trekking, mini-golf, go-karting, pétanque pitch

- **Attractions and relaxation :**

Bar/pub, discotheque, restaurant, cinema, karaoke, park and garden, leisure park, sea world, nature reserve, exhibition centre, art gallery, historical site, museum, theatre, summer theatre, festivals, antiques & bric-a-brac, local craftshop, cellar and wine tasting, casino, racecourse, thalassotherapy centre, sauna, steam baths, beauticians, fitness centre

Surroundings

- **Locality :**

Sea/ocean <165'
 Sandy beach <165'
 Rocky beach 3mi.
 18 hole golf course 9mi.
 Watersports centre
 Lake 18.5mi.
 Mountain range 15.5mi.
 Marina

- **Amenities :**

Town centre
 Bus stop / bus station
 Car rental
 Boat rental
 Breadshop
 Caterer
 Local shops
 Supermarket
 High class retailers
 Hairdressing salon
 Internet cafe
 Post office
 Bank
 Cash point
 Chemist
 Doctor
 Nurse
 Hospital
 Dispensing clinic



living room



tv room



bar area



living room



high speed internet access

Interior

- **Receive up to :**
2 person(s)
- **Liveable floor area :**
380 Sq.ft.
- **Interior layout :**
2 Room(s), 1 bedroom(s), 1 shower room, 1 WC, living room 380 Sq. ft., american style kitchen, tv room, bar area
- **Sleeps - bed(s) :**
1 double bed(s), 1 sofa bed(s) 1 pers
- **Guest facilities :**
Lift, T.V., DVD player, t.v points, high speed internet access, wifi, cupboard, Hanging wardrobe, safe deposit box, hair dryer, fully air conditioned, central heating, Glazed in area, Curtains, Double glazed, Rolling shutters, electric shutters, entry phone system, fire alarm
- **Appliances :**
Crockery/cutlery, kitchen utensils, electric espresso coffee maker, electric kettle, toaster, electric hobs, oven, mini-oven, micro-wave oven, extractor hood, refrigerator, freezer, washing machine, clothes dryer, vacuum cleaner, iron, ironing board

Services

- **Washing :**
Sheets, Towels, Linen, Blanket(s), Pillows
- **House :**
Cleaning on departure

For your guidance

- **For your guidance**
Mobile telephone network coverage
Water : hot/cold
Local voltage supply : 220-240V / 50Hz

Photo album - 1



bar area



tv room



living room



living room



high speed internet access

Photo album - 2



american style kitchen



kitchen



american style kitchen



bedroom



bedroom



shower room



shower room



shower room



Modern block of flats



view from the bedroom



panorama



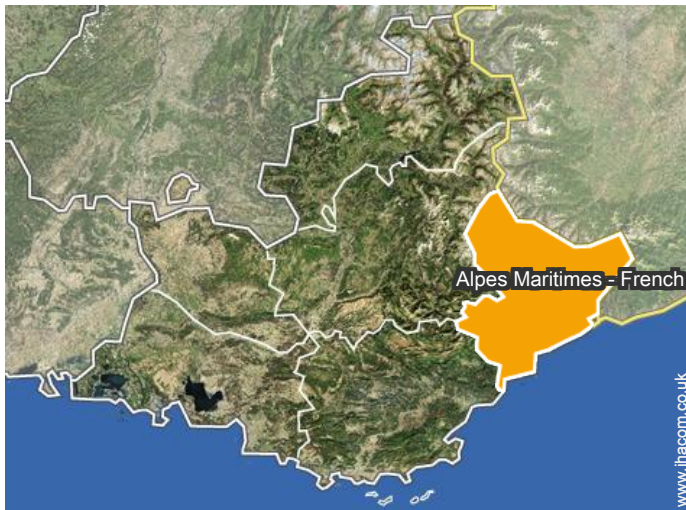
Surroundings

Holiday lettings
Provence-Alpes-Côte d'Azur (French Riviera) - France
"IMPERIAL CROISSETTE A"

6

[Book now](#)

Location



Location & Access

" Nice airport is 25 kilometres and a shuttle takes you to the centre of Cannes. The station is 700 metres away. "



GPS coordinates in degrees, minutes, seconds: Latitude 43°32'57.48"N - Longitude 7°1'47.82"E (Dwelling)

Address

→ IMPERIAL CROISSETTE A
15 RUE ROUAZE
06400 Cannes

• Airport Nice Côte d'Azur

→ Nice, Alpes Maritimes - French Riviera,
Provence-Alpes-Côte d'Azur (French
Riviera), France
→ Distance : 15.5mi.

• Train station Cannes

→ Cannes, Alpes Maritimes - French
Riviera, Provence-Alpes-Côte d'Azur
(French Riviera), France
→ Distance : 990'

• Motorway (junction) A 8

→ Cannes, Alpes Maritimes - French
Riviera, Provence-Alpes-Côte d'Azur
(French Riviera), France
→ Distance : 3mi.

- Saint-Tropez : (37,3mi.)
- Nice : (18.5mi.)

Contact

Spoken
languages



Advert No. 28147

www.ihacom.co.uk



>> HOLIDAY LETTINGS

BOOK DIRECT WITH THE OWNERS

Holiday lettings Cannes - France "IMPERIAL CROISSETTE A"

7
[Book now](#)

Availability calendar - from : may 2019

May	W	Th	F	Sa	Su	M	Tu	W	Th	F	Sa	Su	M	Tu	W	Th	F	Sa	Su	M	Tu	W	Th	F							
2019	1	2	3	4	5	6	7	8	9	10	11	12	13	14	15	16	17	18	19	20	21	22	23	24	25	26	27	28	29	30	31
																										-	-	-	-	-	-

June	Sa	Su	M	Tu	W	Th	F	Sa	Su	M	Tu	W	Th	F	Sa	Su	M	Tu	W	Th	F	Sa	Su							
2019	1	2	3	4	5	6	7	8	9	10	11	12	13	14	15	16	17	18	19	20	21	22	23	24	25	26	27	28	29	30
	-	-	-	-	-	-	-	-	-	-	-	-	-	-	-	-	-	-	-	-	-	-	-	-	-	-	-	-	-	-

Jul	M	Tu	W	Th	F	Sa	Su	M	Tu	W	Th	F	Sa	Su	M	Tu	W	Th	F	Sa	Su	M	Tu	W	Th	F	Sa	Su	M	Tu	W
2019	1	2	3	4	5	6	7	8	9	10	11	12	13	14	15	16	17	18	19	20	21	22	23	24	25	26	27	28	29	30	31
	-	-	-	-	-	-	-	-	-	-	-	-	-	-	-	-	-	-	-	-	-	-	-	-	-	-	-	-	-	-	-

Aug	Th	F	Sa	Su	M	Tu	W	Th	F	Sa	Su	M	Tu	W	Th	F	Sa	Su	M	Tu	W	Th	F	Sa	Su	M	Tu	W	Th	F	Sa
2019	1	2	3	4	5	6	7	8	9	10	11	12	13	14	15	16	17	18	19	20	21	22	23	24	25	26	27	28	29	30	31
	-	-	-	-	-	-	-	-	-	-	-	-	-	-	-	-	-	-	-	-	-	-	-	-	-	-	-	-	-	-	-

Sep	Su	M	Tu	W	Th	F	Sa	Su	M	Tu	W	Th	F	Sa	Su	M	Tu	W	Th	F	Sa	Su	M							
2019	1	2	3	4	5	6	7	8	9	10	11	12	13	14	15	16	17	18	19	20	21	22	23	24	25	26	27	28	29	30
	-	-	-	-	-	-	-	-	-	-	-	-	-	-	-	-	-	-	-	-	-	-	-	-	-	-	-	-	-	-

Oct	Tu	W	Th	F	Sa	Su	M	Tu	W	Th	F	Sa	Su	M	Tu	W	Th	F	Sa	Su	M	Tu	W	Th	F	Sa	Su	M	Tu	W	Th
2019	1	2	3	4	5	6	7	8	9	10	11	12	13	14	15	16	17	18	19	20	21	22	23	24	25	26	27	28	29	30	31
	-	-	-	-	-	-	-	-	-	-	-	-	-	-	-	-	-	-	-	-	-	-	-	-	-	-	-	-	-	-	-

Nov	F	Sa	Su	M	Tu	W	Th	F	Sa	Su	M	Tu	W	Th	F	Sa	Su	M	Tu	W	Th	F	Sa							
2019	1	2	3	4	5	6	7	8	9	10	11	12	13	14	15	16	17	18	19	20	21	22	23	24	25	26	27	28	29	30
	-	-	-	-	-	-	-	-	-	-	-	-	-	-	-	-	-	-	-	-	-	-	-	-	-	-	-	-	-	-

Dec	Su	M	Tu	W	Th	F	Sa	Su	M	Tu	W	Th	F	Sa	Su	M	Tu	W	Th	F	Sa	Su	M	Tu							
2019	1	2	3	4	5	6	7	8	9	10	11	12	13	14	15	16	17	18	19	20	21	22	23	24	25	26	27	28	29	30	31
	-	-	-	-	-	-	-	-	-	-	-	-	-	-	-	-	-	-	-	-	-	-	-	-	-	-	-	-	-	-	

Jan	W	Th	F	Sa	Su	M	Tu	W	Th	F	Sa	Su	M	Tu	W	Th	F	Sa	Su	M	Tu	W	Th	F							
2020	1	2	3	4	5	6	7	8	9	10	11	12	13	14	15	16	17	18	19	20	21	22	23	24	25	26	27	28	29	30	31
	-	-	-	-	-	-	-	-	-	-	-	-	-	-	-	-	-	-	-	-	-	-	-	-	-	-	-	-	-	-	

Feb	Sa	Su	M	Tu	W	Th	F	Sa	Su	M	Tu	W	Th	F	Sa	Su	M	Tu	W	Th	F	Sa							
2020	1	2	3	4	5	6	7	8	9	10	11	12	13	14	15	16	17	18	19	20	21	22	23	24	25	26	27	28	29
	-	-	-	-	-	-	-	-	-	-	-	-	-	-	-	-	-	-	-	-	-	-	-	-	-	-	-	-	-



Availability calendar - from : february 2020

Mar	Su	M	Tu	W	Th	F	Sa	Su	M	Tu	W	Th	F	Sa	Su	M	Tu	W	Th	F	Sa	Su	M	Tu							
2020	1	2	3	4	5	6	7	8	9	10	11	12	13	14	15	16	17	18	19	20	21	22	23	24	25	26	27	28	29	30	31
-	-	-	-	-	-	-	-	-	-	-	-	-	-	-	-	-	-	-	-	-	-	-	-	-	-	-	-	-	-	-	

Apr	W	Th	F	Sa	Su	M	Tu	W	Th	F	Sa	Su	M	Tu	W	Th	F	Sa	Su	M	Tu	W	Th							
2020	1	2	3	4	5	6	7	8	9	10	11	12	13	14	15	16	17	18	19	20	21	22	23	24	25	26	27	28	29	30
-	-	-	-	-	-	-	-	-	-	-	-	-	-	-	-	-	-	-	-	-	-	-	-	-	-	-	-	-	-	

[Month : Next >>](#)

Rental rates - Flat-Apartments - 2 Person(s)

Rates	Night	Weekend	week	2 weeks	Month
■ Low season	-	-	£401*	-	-
■ Mid season	-	-	£534*	-	-
■ High season	-	-	£668*	-	-

[Book now](#)

Booking conditions

- **Reservation**
 - Payment made upon reservation : 25% of rental sum
 - Payment balance : on handing over the keys
 - Deposit required : £445*
- **rentals**
 - Service charges included
 - Day tax included
 - Cleaning charge on departure included

▶ Book now

▶ Contact the owner

Accepted methods of payment

- Bank transfer (wire) ● Cheque ● Cash

Contact directly the property owners

www.ihacom.co.uk
Advert No.
28147
 >> **Book now** <<

Contact

Spoken languages



* Converted at the rate indicated : €100 = \$116.85 = £89

Advert No. 28147

www.ihacom.co.uk

