

Holiday lettings Calpe "Renato Murcia"

For holiday in the Sun in Calpe near the city of Alicante



House, semi-detached, 1 floor, separate entrance, in a(an) Private property

Setting : quiet, tranquil

Capacity : from 4 to 5 person(s)

Bedroom(s) : 2

Room(s) : 4



Meublés de Tourisme
Case & Appartamenti per vacanze

Calpe - Province of Alicante - Valencian Community
Spain

Advert No. 61744

www.ihacom.co.uk



>> HOLIDAY LETTINGS

BOOK DIRECT WITH THE OWNERS

Holiday lettings



House, semi-detached, 1 floor, separate entrance, in a(an) Private property

- **Ideal for all age groups, family**
- **View :** unobscured, not overlooked, swimming pool, garden/park, fantastic sunset
- **Setting :** quiet, tranquil
- **Exposure :** South

" Apartment of 80 m2 kitchen, air conditioning, 2 rooms, bathroom, terrace, reserved covered parking, sunny pool, kitchen equipped with fridge/freezer, washing machine, dishwasher, micro wave, coffee machine, and dishes sufficient for 5 people, outdoors you can make your barbecues unless it y of the wind of course, located less than 4 minutes from the sandy beaches, at the foot of the rock of Ifach, symbol of the Costa Blanca, A 20 km water amusement parks has 3 minutes shops such as Lidl, Aldi, Meradona Consum and a range of restaurants. You will also find a Calpe tracks cycle down to the beaches, trails planned for stroll, a paseo of several kilometres, we are on site when needed. "

Assets

- **Swimming pool :**
Shared swimming pool, rectangular (length 46', width 26'), step ladder, outside shower (open from '15 june' till '30 september')
- **Parking :**
Parking uncovered : 1 reserved bay.
- **Advantages :**
Pétanque set(s)

Surroundings & location



Seaside



Horse riding



Fishing

" You will find bicycle mites, travel health, mountaineering, and all sports and games related has water, in our tourist area is Calpe "

Leisure

- **Leisure activities less than 20 km / 12 miles :**

Bathing, pedalo, snorkelling, scuba diving, sailing, golf, tennis, boat trips, horse trekking, fishing, angling, pétanque pitch

- **Supervised :**

Sailing school, dive school

- **Attractions and relaxation :**

Bar/pub, discotheque, restaurant, karaoke, park and garden, leisure park, zoo/animal park, sea world, nature reserve, museum, antiques & bric-a-brac, cellar and wine tasting

Surroundings

- **Locality :**

Sea/ocean 0.93mi.
Sandy beach 0.93mi.
Shingle beach 1.25mi.
Rocky beach 1.25mi.
Public swimming pool 1.85mi.
Marina 1.85mi.
Slipway 1.85mi.

- **Amenities :**

Town centre 1.85mi.
Bus stop / bus station 1.85mi.
Bus pick up point beach 990'
Car rental 1.85mi.
Scuba diving material hire 1.85mi.
Household linens for hire/laundry services 0.5mi.
Local shops
Supermarket 0.62mi.
Hairdressing salon 0.62mi.
Post office 1.85mi.
Bank 1.5mi.
Cash point 1.5mi.
Chemist 0.93mi.
Doctor 1.5mi.
Hospital 12.5mi.
Dispensing clinic 1.85mi.



living room



the house



View from the property

Interior

- **Receive up to :**
from 4 to 5 person(s) (4 adults, 1 children)
- **Liveable floor area :**
860 Sq.ft.
- **Interior layout :**
4 Room(s), 2 bedroom(s), 1 bathroom, 1 WC, living room 194 Sq.ft., separate kitchen, loggia
- **Sleeps - bed(s) :**
1 double bed(s), 2 king-size bed(s), 1 sofa bed(s) 2 pers, 3 single bed(s)
- **Guest facilities :**
T.V., cable/satellite, wifi, Hanging wardrobe, fly screens, partly air conditioned, mobile cool air fan, ceiling paddle fan, Glazed in area, Curtains
- **Appliances :**
Crockery/cutlery, kitchen utensils, electric coffee maker, toaster, juicer, food processor, gas cooker, oven, micro-wave oven, extractor hood, refridgerator, freezer, dish washer, washing machine, iron, ironing board

Exterior

- **Ground surface :**
6,500 Sq.ft.
- **Outside accommodation :**
Terrace, balcony
- **Outside setting :**
Enclosed grounds
- **Outside amenities :**
Summer living area, BBQ, garden table(s), parasol, garden seated area, outside shower facilities



watersports nearby

Services

- **Washing :**
Sheets supplement
- **House :**
Cleaning on departure supplement (+£62*), Parking

For your guidance

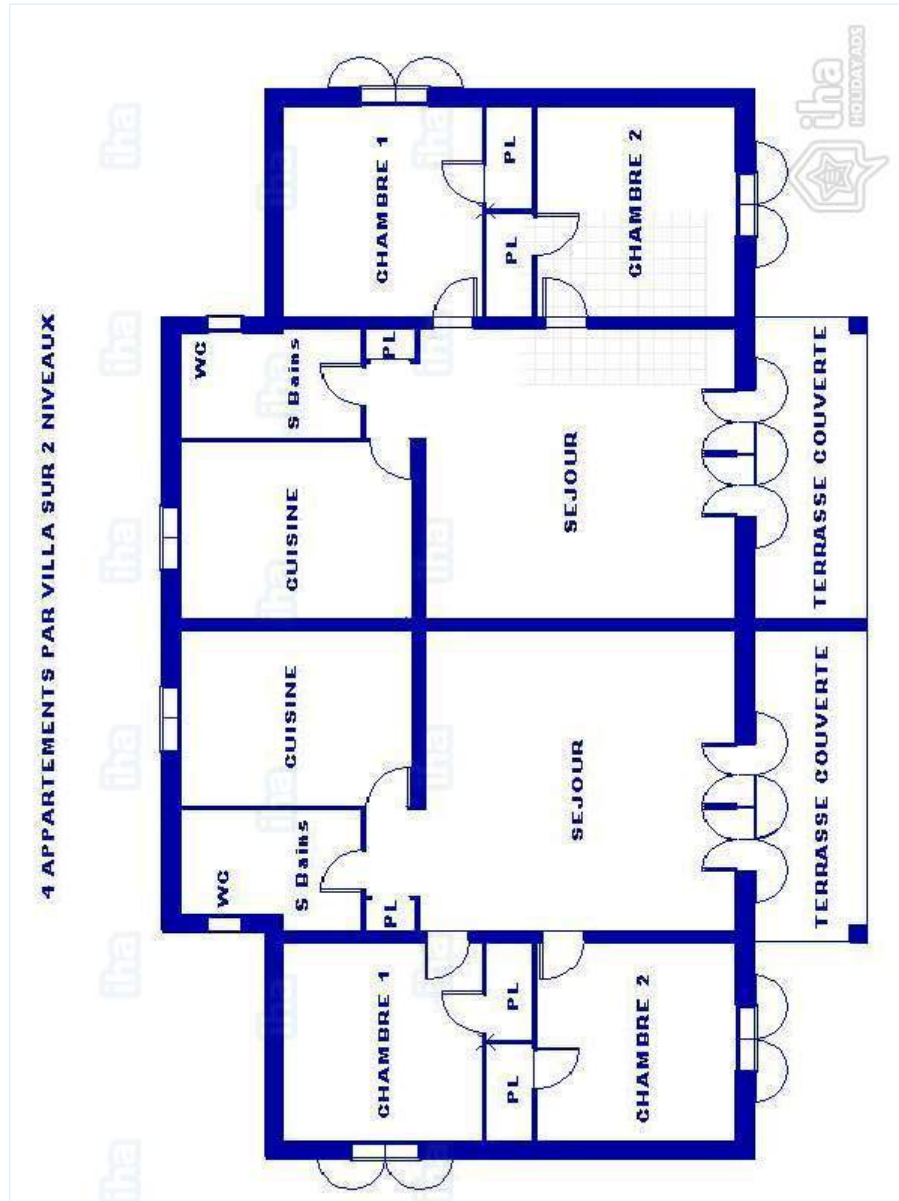
- **For your guidance**
Children welcome
Pets accepted under certain conditions (ask the owner)
Present on site : pets
Mobile telephone network coverage, personal transport advisable
Water : hot/cold
Local voltage supply : 220-240V / 50Hz
Electricity supply : mains



www.ihacom.co.uk

Advert No. 61744

Floor plan



www.ihacom.co.uk

Photo album - 1



the house



living room



View from the property



watersports nearby

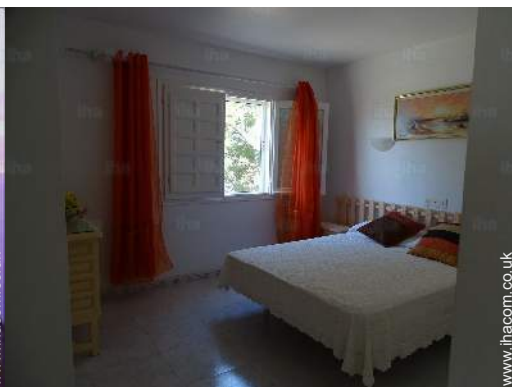
Photo album - 2



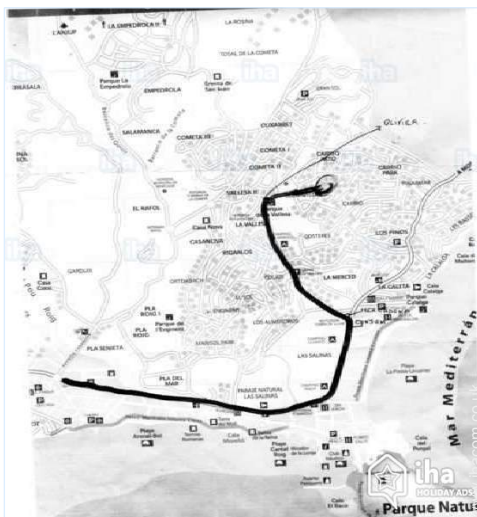
view from the kitchen



House




Route map



Location & Access

" To get a Calpe by motorway: Exit 63 Benissa, Calpe Alicante Attention head out of Valencia stay on the A7 then AP7 direction Gandía then exit 63 "

 GPS coordinates in degrees, minutes, seconds: Latitude 38° 39'44"N - Longitude 0°4'18"E ([Dwelling](#))

Address

→ Buenavista 4 E
03710 Calpe

• Motorway (junction) A7 - sortie 63

→ Canor, Province of Alicante, Valencian Community, Spain
→ Distance : 6mi.
→ Time : 10'

• Airport Alicante

→ Alicante, Province of Alicante, Valencian Community, Spain
→ Distance : 43,5mi.
→ Time : 50'

- Alicante : (37,3mi.)
- Benidorm : (12.5mi.)
- Valencia : (62mi.)

Contact

Spoken languages



Location



Holiday lettings Calpe - Spain "Renato Murcia"

9

[Book now](#)

Availability calendar - from : april 2019

Apr	M	Tu	W	Th	F	Sa	Su	M	Tu	W	Th	F	Sa	Su	M	Tu	W	Th	F	Sa	Su	M	Tu	
2019	1	2	3	4	5	6	7	8	9	10	11	12	13	14	15	16	17	18	19	20	21	22	23	24

May	W	Th	F	Sa	Su	M	Tu	W	Th	F	Sa	Su	M	Tu	W	Th	F	Sa	Su	M	Tu	W	Th	F
2019	1	2	3	4	5	6	7	8	9	10	11	12	13	14	15	16	17	18	19	20	21	22	23	24
	-	-	-	-	-	-	-	-	-	-	-	-	-	-	-	-	-	-	-	-	-	-	-	-

June	Sa	Su	M	Tu	W	Th	F	Sa	Su	M	Tu	W	Th	F	Sa	Su	M	Tu	W	Th	F	Sa	Su
2019	1	2	3	4	5	6	7	8	9	10	11	12	13	14	15	16	17	18	19	20	21	22	23
	-	-	-	-	-	-	-	-	-	-	-	-	-	-	-	-	-	-	-	-	-	-	-

Jul	M	Tu	W	Th	F	Sa	Su	M	Tu	W	Th	F	Sa	Su	M	Tu	W	Th	F	Sa	Su	M	Tu	W
2019	1	2	3	4	5	6	7	8	9	10	11	12	13	14	15	16	17	18	19	20	21	22	23	24
	-	-	-	-	-	-	-	-	-	-	-	-	-	-	-	-	-	-	-	-	-	-	-	-

Aug	Th	F	Sa	Su	M	Tu	W	Th	F	Sa	Su	M	Tu	W	Th	F	Sa	Su	M	Tu	W	Th	F	Sa
2019	1	2	3	4	5	6	7	8	9	10	11	12	13	14	15	16	17	18	19	20	21	22	23	24
	-	-	-	-	-	-	-	-	-	-	-	-	-	-	-	-	-	-	-	-	-	-	-	-

Sep	Su	M	Tu	W	Th	F	Sa	Su	M	Tu	W	Th	F	Sa	Su	M	Tu	W	Th	F	Sa	Su	M
2019	1	2	3	4	5	6	7	8	9	10	11	12	13	14	15	16	17	18	19	20	21	22	23
	-	-	-	-	-	-	-	-	-	-	-	-	-	-	-	-	-	-	-	-	-	-	-

Oct	Tu	W	Th	F	Sa	Su	M	Tu	W	Th	F	Sa	Su	M	Tu	W	Th	F	Sa	Su	M	Tu	W	Th
2019	1	2	3	4	5	6	7	8	9	10	11	12	13	14	15	16	17	18	19	20	21	22	23	
	-	-	-	-	-	-	-	-	-	-	-	-	-	-	-	-	-	-	-	-	-	-	-	-

Nov	F	Sa	Su	M	Tu	W	Th	F	Sa	Su	M	Tu	W	Th	F	Sa	Su	M	Tu	W	Th	F	Sa
2019	1	2	3	4	5	6	7	8	9	10	11	12	13	14	15	16	17	18	19	20	21	22	23
	-	-	-	-	-	-	-	-	-	-	-	-	-	-	-	-	-	-	-	-	-	-	-

Dec	Su	M	Tu	W	Th	F	Sa	Su	M	Tu	W	Th	F	Sa	Su	M	Tu	W	Th	F	Sa	Su	M	Tu
2019	1	2	3	4	5	6	7	8	9	10	11	12	13	14	15	16	17	18	19	20	21	22	23	
	-	-	-	-	-	-	-	-	-	-	-	-	-	-	-	-	-	-	-	-	-	-	-	-

Jan	W	Th	F	Sa	Su	M	Tu	W	Th	F	Sa	Su	M	Tu	W	Th	F	Sa	Su	M	Tu	W	Th	F
2020	1	2	3	4	5	6	7	8	9	10	11	12	13	14	15	16	17	18	19	20	21	22	23	
	-	-	-	-	-	-	-	-	-	-	-	-	-	-	-	-	-	-	-	-	-	-	-	-



Holiday lettings
Valencian Community - Calpe
"Renato Murcia"

10
[Book now](#)






Availability calendar - from : january 2020

Feb	Sa	Su	M	Tu	W	Th	F	Sa	Su	M	Tu	W	Th	F	Sa	Su	M	Tu	W	Th	F	Sa	Su	M	Tu	W	Th	F	Sa
2020	1	2	3	4	5	6	7	8	9	10	11	12	13	14	15	16	17	18	19	20	21	22	23	24	25	26	27	28	29
-	-	-	-	-	-	-	-	-	-	-	-	-	-	-	-	-	-	-	-	-	-	-	-	-	-	-	-	-	-

Mar	Su	M	Tu	W	Th	F	Sa	Su	M	Tu	W	Th	F	Sa	Su	M	Tu	W	Th	F	Sa	Su	M	Tu	W	Th	F	Sa	Su	M	Tu
2020	1	2	3	4	5	6	7	8	9	10	11	12	13	14	15	16	17	18	19	20	21	22	23	24	25	26	27	28	29	30	31
-	-	-	-	-	-	-	-	-	-	-	-	-	-	-	-	-	-	-	-	-	-	-	-	-	-	-	-	-	-	-	-

[Month : Next >>](#)

Rental rates - House - from 4 to 5 Person(s)

Rates	Night	Weekend	week	2 weeks	Month
 Low season	-	-	£312* (Saturday)	£579*	£623* (Saturday)
 Mid season	-	-	£534* (Saturday)	£1068*	-
 High season	£107* (Saturday) > 7	-	£730* (Saturday)	£1460* (Saturday)	-
 Festive specials	-	£267*	£374* (Saturday)	-	-
 Promotional period	-	-	£356* (Saturday)	-	-

(Check-in day) > Minimum Night

[Book now](#)



View from the property



watersports nearby



the house



living room

Booking conditions

• Reservation

- Payment made upon reservation : 30% of rental sum
- Payment balance : on handing over the keys
- Deposit required : £267*

• rentals

- Service charges to be added
- Cleaning charge levy on departure : £62*
- Anticipated supplement for :
 - animals

[▶ Book now](#)

[▶ Contact the owner](#)

Accepted methods of payment

- International Money Order
- Bank transfer (wire)
- Cash

Contact directly the property owners

www.ihacom.co.uk

Advert No.

61744

[>> Book now <<](#)

Contact

Spoken languages



* Converted at the rate indicated : €100 = \$116.85 = £89

Advert No. 61744

www.ihacom.co.uk

