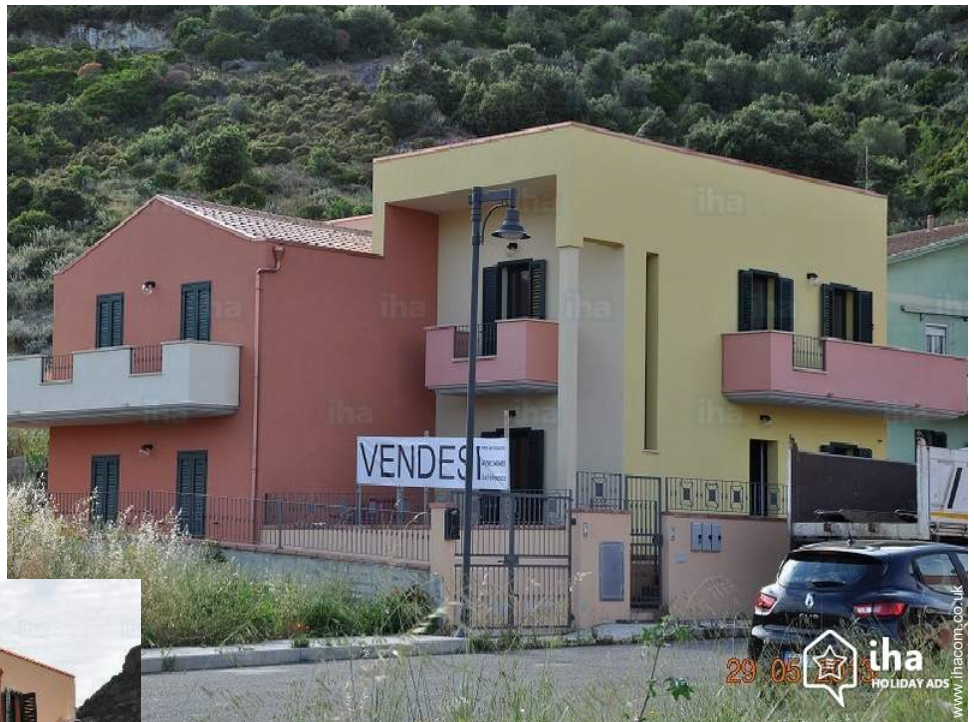


# Holiday lettings Bosa Marina Villa



**Villa**, detached, single storey, separate entrance, in a(an) Property

Setting : waterfront, rustic

Capacity : from 2 to 6 person(s)

Bedroom(s) : 2

Room(s) : 2

Bosa Marina - Province of Oristano (OR) - Sardinia

Italy

Advert No. 71541

[www.ihacom.co.uk](http://www.ihacom.co.uk)



>> HOLIDAY LETTINGS

BOOK DIRECT WITH THE OWNERS



### Holiday lettings



Villa, detached, single storey, separate entrance, in a(an) Property

- View : panoramic, sea/ocean, river
- Setting : waterfront, rustic

### Assets

- Parking :  
Parking uncovered

### Surroundings & location



Seaside

#### Leisure

- Leisure activities less than 20 km / 12 miles :  
Bathing, surfing, windsurfing



Advert No. 71541

[www.ihacom.co.uk](http://www.ihacom.co.uk)





### Interior

- **Receive up to :**  
from 2 to 6 person(s) (4 adults, 2 children)
- **Interior layout :**  
2 Room(s), 2 bedroom(s), 2 bathroom, shower room, 2 WC, living room, sitting room, american style kitchen, dining room, cosy nook, pantry, veranda
- **Sleeps - bed(s) :**  
2 double bed(s), 2 sofa bed(s) 2 pers
- **Guest facilities :**  
T.V., wardrobe
- **Appliances :**  
Kitchen utensils, cafetiere, toaster, gas cooker, oven, refridgerator

### Exterior

- **Outside accommodation :**  
Balcony 110 Sq.ft.
- **Outside setting :**  
Garden 1,076 Sq.ft.
- **Outside amenities :**  
BBQ, parasol



### Services

- **Washing :**  
Pillows

### For your guidance

- **For your guidance**  
Children welcome  
Pets accepted  
Water : hot/cold, water not drinkable  
Local voltage supply : 220V / 60Hz  
Electricity supply : mains
- **Handicapped people welcome**  
Wheelchair access





Floor plan



Photo album - 1





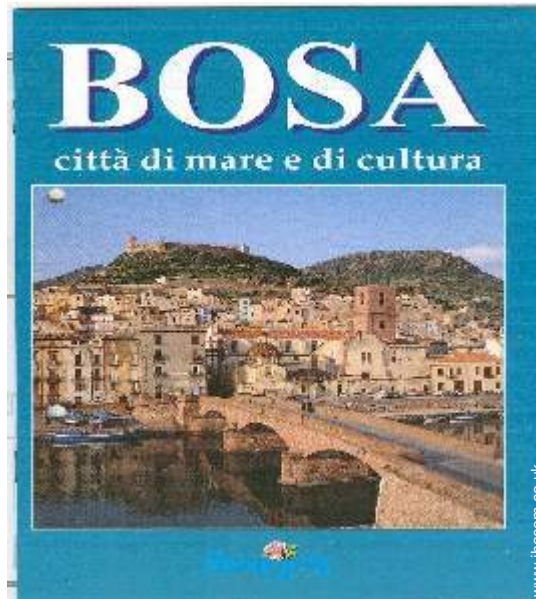
Photo album - 2



Photo album - 3



[Favourite photo gallery - 1](#)





Route map



Location & Access



GPS coordinates in degrees, minutes, seconds: Latitude 40° 17'45"N - Longitude 8°28'50"E ([Dwelling](#))

Address

→ Via Sas Covas  
Fronte Centro Nautico Pinna  
08013 Bosa Marina

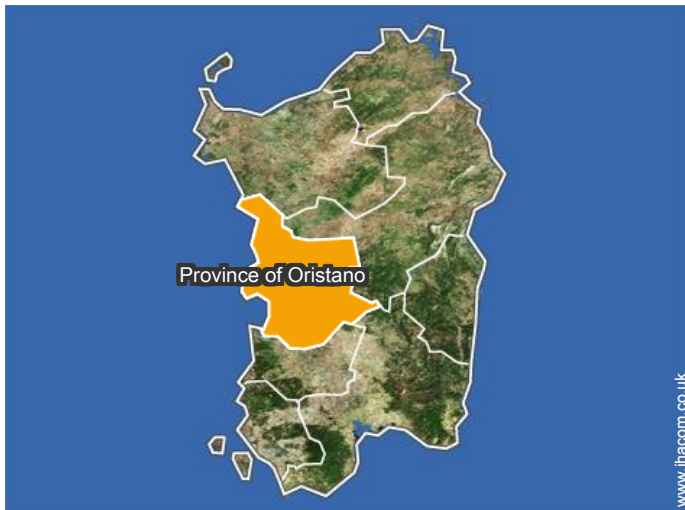
- Alghero : (25mi.)

Contact

Spoken languages



Location





# Holiday lettings

## Province of Oristano - Bosa Marina

### Villa

#### Availability calendar - from : june 2019

June	Sa	Su	M	Tu	W	Th	F	Sa	Su	M	Tu	W	Th	F	Sa	Su	M	Tu	W	Th	F	Sa	Su	M	Tu	W	Th	F	Sa	Su	
2019	1	2	3	4	5	6	7	8	9	10	11	12	13	14	15	16	17	18	19	20	21	22	23	24	25	26	27	28	29	30	
																											-	-	-	-	-

Jul	M	Tu	W	Th	F	Sa	Su	M	Tu	W	Th	F	Sa	Su	M	Tu	W	Th	F	Sa	Su	M	Tu	W	Th	F	Sa	Su	M	Tu	W	
2019	1	2	3	4	5	6	7	8	9	10	11	12	13	14	15	16	17	18	19	20	21	22	23	24	25	26	27	28	29	30	31	
	-	-	-	-	-	-	-	-	-	-	-	-	-	-	-	-	-	-	-	-	-	-	-	-	-	-	-	-	-	-	-	-

Aug	Th	F	Sa	Su	M	Tu	W	Th	F	Sa	Su	M	Tu	W	Th	F	Sa	Su	M	Tu	W	Th	F	Sa	Su	M	Tu	W	Th	F	Sa	
2019	1	2	3	4	5	6	7	8	9	10	11	12	13	14	15	16	17	18	19	20	21	22	23	24	25	26	27	28	29	30	31	
	-	-	-	-	-	-	-	-	-	-	-	-	-	-	-	-	-	-	-	-	-	-	-	-	-	-	-	-	-	-	-	-

Sep	Su	M	Tu	W	Th	F	Sa	Su	M	Tu	W	Th	F	Sa	Su	M	Tu	W	Th	F	Sa	Su	M	Tu	W	Th	F	Sa	Su	M	
2019	1	2	3	4	5	6	7	8	9	10	11	12	13	14	15	16	17	18	19	20	21	22	23	24	25	26	27	28	29	30	
	-	-	-	-	-	-	-	-	-	-	-	-	-	-	-	-	-	-	-	-	-	-	-	-	-	-	-	-	-	-	-

Oct	Tu	W	Th	F	Sa	Su	M	Tu	W	Th	F	Sa	Su	M	Tu	W	Th	F	Sa	Su	M	Tu	W	Th	F	Sa	Su	M	Tu	W	Th	
2019	1	2	3	4	5	6	7	8	9	10	11	12	13	14	15	16	17	18	19	20	21	22	23	24	25	26	27	28	29	30	31	
	-	-	-	-	-	-	-	-	-	-	-	-	-	-	-	-	-	-	-	-	-	-	-	-	-	-	-	-	-	-	-	-

Nov	F	Sa	Su	M	Tu	W	Th	F	Sa	Su	M	Tu	W	Th	F	Sa	Su	M	Tu	W	Th	F	Sa	Su	M	Tu	W	Th	F	Sa	
2019	1	2	3	4	5	6	7	8	9	10	11	12	13	14	15	16	17	18	19	20	21	22	23	24	25	26	27	28	29	30	
	-	-	-	-	-	-	-	-	-	-	-	-	-	-	-	-	-	-	-	-	-	-	-	-	-	-	-	-	-	-	-

Dec	Su	M	Tu	W	Th	F	Sa	Su	M	Tu	W	Th	F	Sa	Su	M	Tu	W	Th	F	Sa	Su	M	Tu	W	Th	F	Sa	Su	M	Tu
2019	1	2	3	4	5	6	7	8	9	10	11	12	13	14	15	16	17	18	19	20	21	22	23	24	25	26	27	28	29	30	31
	-	-	-	-	-	-	-	-	-	-	-	-	-	-	-	-	-	-	-	-	-	-	-	-	-	-	-	-	-	-	-

Jan	W	Th	F	Sa	Su	M	Tu	W	Th	F	Sa	Su	M	Tu	W	Th	F	Sa	Su	M	Tu	W	Th	F	Sa	Su	M	Tu	W	Th	F
2020	1	2	3	4	5	6	7	8	9	10	11	12	13	14	15	16	17	18	19	20	21	22	23	24	25	26	27	28	29	30	31
	-	-	-	-	-	-	-	-	-	-	-	-	-	-	-	-	-	-	-	-	-	-	-	-	-	-	-	-	-	-	-

Feb	Sa	Su	M	Tu	W	Th	F	Sa	Su	M	Tu	W	Th	F	Sa	Su	M	Tu	W	Th	F	Sa								
2020	1	2	3	4	5	6	7	8	9	10	11	12	13	14	15	16	17	18	19	20	21	22	23	24	25	26	27	28	29	
	-	-	-	-	-	-	-	-	-	-	-	-	-	-	-	-	-	-	-	-	-	-	-	-	-	-	-	-	-	-

Mar	Su	M	Tu	W	Th	F	Sa	Su	M	Tu	W	Th	F	Sa	Su	M	Tu	W	Th	F	Sa	Su	M	Tu	W	Th	F	Sa	Su	M	Tu
2020	1	2	3	4	5	6	7	8	9	10	11	12	13	14	15	16	17	18	19	20	21	22	23	24	25	26	27	28	29	30	31
	-	-	-	-	-	-	-	-	-	-	-	-	-	-	-	-	-	-	-	-	-	-	-	-	-	-	-	-	-	-	-






Availability calendar - from : march 2020

Apr	W	Th	F	Sa	Su	M	Tu	W	Th	F	Sa	Su	M	Tu	W	Th	F	Sa	Su	M	Tu	W	Th							
2020	1	2	3	4	5	6	7	8	9	10	11	12	13	14	15	16	17	18	19	20	21	22	23	24	25	26	27	28	29	30
-	-	-	-	-	-	-	-	-	-	-	-	-	-	-	-	-	-	-	-	-	-	-	-	-	-	-	-	-	-	

May	F	Sa	Su	M	Tu	W	Th	F	Sa	Su	M	Tu	W	Th	F	Sa	Su	M	Tu	W	Th	F	Sa	Su							
2020	1	2	3	4	5	6	7	8	9	10	11	12	13	14	15	16	17	18	19	20	21	22	23	24	25	26	27	28	29	30	31
-	-	-	-	-	-	-	-	-	-	-	-	-	-	-	-	-	-	-	-	-	-	-	-	-	-	-	-	-	-	-	

[Month : Next >>](#)

Rental rates - Villa - from 2 to 6 Person(s)

Rates	Night	Weekend	week	2 weeks	Month
 Low season	-	-	£356*	-	£890*
 Mid season	-	-	£490*	-	£1335*
 High season	-	-	£623*	-	£1780*

[Book now](#)

Booking conditions

• Reservation

- Payment made upon reservation : 30% of rental sum
- Payment balance : on handing over the keys
- Deposit required : £178\*

• rentals

- Service charges included
- Day tax included
- Cleaning charge levy on departure : £45\*

[▶ Book now](#)

[▶ Contact the owner](#)

Accepted methods of payment

- Bank transfer (wire) • Cash

Contact directly the property owners

[www.ihacom.co.uk](http://www.ihacom.co.uk)  
Advert No.  
71541  
[>> Book now <<](#)

Contact

Spoken languages



\* Converted at the rate indicated : €100 = \$116.85 = £89

Advert No. 71541

[www.ihacom.co.uk](http://www.ihacom.co.uk)

