

Holiday lettings Côte de Goëlo "Les Hortensias"

In bordord of sea on the coast of Goëlo. Binic is the birthmark of the Côtes d'Armor



Maisonette, detached, single storey, separate entrance, in a(an) Property

Setting : waterfront, pleasant

Capacity : from 2 to 3 person(s)

Bedroom(s) : 1

Room(s) : 2

Binic - Côtes-d'Armor (22) - Brittany

France

Reservation : +33 (0) 685291793 (France)

Advert No. 15666

www.ihacom.co.uk



>> HOLIDAY LETTINGS

BOOK DIRECT WITH THE OWNERS

Holiday lettings



Maisonette, detached, single storey, separate entrance, in a(an) Property

- **Ideal for couples with baby, retired people**
- **View :** garden/park
- **Setting :** waterfront, pleasant

" Nice cottage on the ground floor in Garden ended. View parking sea front rental with a staircase leading directly to the beach 50 m. Beach below with area children and walk games. The port is 100 m. Footpath along the sea GR 34. Harbour and beaches in the city, discover our beautiful coast of Goëlo and its many beaches. Quiet and close to all amenities we offer you this cottage garden de38 m2 with 1 bedroom garden access and a bathroom, shower, wc, closet * and a fully equipped kitchen: fridge/freezers, frige gas, oven, microwave, hob, electric coffee maker, electric kettle, toaster. dishes and kitchen utensils. Garden furniture and barbecue with sun loungers. Rent for 2 persons with independent entrance and possibility of an extra bed (+ 20 EUR). Shops and supermarket at 500 m. Swimming pool and shopping center 1 km. Market on Thursday. Optional: package release household *." "

Assets

- **Parking :**
Parking uncovered : off road.
- **Advantages :**
Pétanque set(s)
- **baby equipment :**
Baby chair, baby changer, baby bath, pushchair

Benefits :
Direct access to the beach

Surroundings & location



" ... Discover the island of Bréhat, the coast of pink granite, cap Fréhel, Ploumanac'h ' h, mont st michel, st malo: pirate city, zoo Tregomeur, Valley of the Trieux (train), the castle of the city Jagu, abaye beauport, Paimpol and the cliffs of Plouha, Belle Isle, fort la latte., the old town of Dinan, etc... "

Leisure

- **Leisure activities less than 20 km / 12 miles :**

Bathing, water skiing, windsurfing, sailing, golf, tennis, squash, riding school, pony club, pathway, coastal/forest paths, hiking, mountain bike (path), boat trips, horse-drawn carriage, horse trekking, mini-golf, go-karting, ten-pin bowling, acrobatics, fishing, angling, pétanque pitch

- **Supervised :**

Sailing school

- **Attractions and relaxation :**

Bar/pub, discotheque, restaurant, cinema, park and garden, zoo/animal park, art gallery, museum, antiques & bric-a-brac, casino, beauticians, Bio farm

Surroundings

- **Locality :**

Heated swimming pool 0.62mi.
Sea/ocean <165'
Sandy beach <165'
Public swimming pool 0.62mi.
Public tennis court 3mi.
18 hole golf course 3mi.
Watersports centre 0.3mi.
Marina 330'
Slipway 990'

- **Amenities :**

Town centre 990'
Bus stop / bus station 0.3mi.
Bike/mountain bike hire 990'
Car rental 9mi.
Boat rental
Household linens for hire/laundry services
Breadshop 990'
Caterer 990'
Local shops 990'
Supermarket 0.3mi.
Hairdressing salon 990'
Internet cafe 0.3mi.
Post office 0.3mi.
Bank 990'
Cash point 990'
Chemist 0.3mi.
Doctor 0.3mi.
Nurse 0.3mi.
Hospital 9mi.



Interior facilities



Kitchen Area



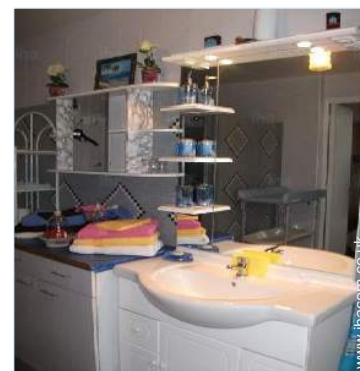
bedroom

Interior

- **Receive up to :**
from 2 to 3 person(s) (2 adults, 1 children)
- **Liveable floor area :**
410 Sq.ft.
- **Interior layout :**
2 Room(s), 1 bedroom(s), 1 shower room, 1 WC, living room 183 Sq.ft., Kitchen Area
- **Sleeps - bed(s) :**
1 double bed(s), 1 folding bed(s) 1 pers, 1 baby cot(s)
- **Guest facilities :**
T.V., t.v points, wardrobe, cupboard, Hanging wardrobe, radio alarmclock, central heating, electric heating, Glazed in area, Curtains, Double glazed, Rolling shutters
- **Appliances :**
Crockery/cutlery, kitchen utensils, cafetiere, electric coffee maker, electric kettle, toaster, juicer, electric hobs, oven, mini-oven, microwave oven, extractor hood, refridgerator, freezer, vacuum cleaner, iron, ironing board

Exterior

- **Ground surface :**
3,300 Sq.ft.
- **Outside accommodation :**
Terrace, garden shed
- **Outside setting :**
Private courtyard, enclosed grounds, garden
- **Outside amenities :**
Summer living area, BBQ, gas BBQ, garden table(s), 6 garden seat(s), arbour, parasol, garden seated area, 4 sun recliner(s)



shower room

Services

- **Washing :**
Sheets supplement (1 X / per week +£7*), Towels supplement (1 X / per week +£3*), Linen supplement (1 X / per week +£3*), Blanket(s), Quilt(s), Pillows
- **House :**
Cleaning on departure supplement (+£45*), Garden/swimming pool maintenance, Parking, Airport transfers supplement (+£18*)

For your guidance

- **For your guidance**
Children welcome
No pet allowed
Non smoking rental, mobile telephone network coverage
Water : hot/cold
Local voltage supply : 220-240V / 50Hz
Electricity supply : mains



bedroom

Photo album - 1



Kitchen Area



Interior facilities



bedroom



bedroom



shower room

Photo album - 2



shower room



terrace



outside furniture



Leisure



Outside setting



sandy beach



Sleeps - bed(s)



panorama



enclosed grounds



the property




the house

Location



Location & Access

" the corniche in binic Street * 15mm of st brieuc * 60mm of rennes * 5mm st quay portrieux (deep water port) "

 GPS coordinates in degrees, minutes, seconds: Latitude 48°36'14"N - Longitude 2° 49'12"W (Dwelling)

Address

→ rue de la Corniche
22520 Binic

• Motorway (junction) a12

→ Saint-Brieuc, Côtes-d'Armor, Brittany,
France
→ Distance : 9mi.
→ Time : 15'

• Airport Rennes St Jacques

→ Rennes, Ille-et-Vilaine, Brittany, France
→ Distance : 62mi.
→ Time : 1h15'

• Train station Saint Brieuc

→ Saint-Brieuc, Côtes-d'Armor, Brittany,

France

→ Distance : 9mi.
→ Time : 15'

• Étables-sur-Mer : (1.85mi.)

• Saint-Brieuc : (9mi.)

• Rennes : (62mi.)

Contact

Spoken
languages



Holiday lettings Brittany - France "Les Hortensias"

7
[Book now](#)

Availability calendar - from : september 2017

Sep	F	Sa	Su	M	Tu	W	Th	F	Sa	Su	M	Tu	W	Th	F	Sa	Su	M	Tu	W	Th	F	Sa							
2017	1	2	3	4	5	6	7	8	9	10	11	12	13	14	15	16	17	18	19	20	21	22	23	24	25	26	27	28	29	30
																								-	-	-	-	-	-	-

Oct	Su	M	Tu	W	Th	F	Sa	Su	M	Tu	W	Th	F	Sa	Su	M	Tu	W	Th	F	Sa	Su	M	Tu							
2017	1	2	3	4	5	6	7	8	9	10	11	12	13	14	15	16	17	18	19	20	21	22	23	24	25	26	27	28	29	30	31
	-	-	-	-	-	-	-	-	-	-	-	-	-	-	-	-	-	-	-	-	-	-	-	-	-	-	-	-	-	-	

Nov	W	Th	F	Sa	Su	M	Tu	W	Th	F	Sa	Su	M	Tu	W	Th	F	Sa	Su	M	Tu	W	Th							
2017	1	2	3	4	5	6	7	8	9	10	11	12	13	14	15	16	17	18	19	20	21	22	23	24	25	26	27	28	29	30
	-	-	-	-	-	-	-	-	-	-	-	-	-	-	-	-	-	-	-	-	-	-	-	-	-	-	-	-	-	-

Dec	F	Sa	Su	M	Tu	W	Th	F	Sa	Su	M	Tu	W	Th	F	Sa	Su	M	Tu	W	Th	F	Sa	Su							
2017	1	2	3	4	5	6	7	8	9	10	11	12	13	14	15	16	17	18	19	20	21	22	23	24	25	26	27	28	29	30	31
	-	-	-	-	-	-	-	-	-	-	-	-	-	-	-	-	-	-	-	-	-	-	-	-	-	-	-	-	-	-	

Jan	M	Tu	W	Th	F	Sa	Su	M	Tu	W	Th	F	Sa	Su	M	Tu	W	Th	F	Sa	Su	M	Tu	W							
2018	1	2	3	4	5	6	7	8	9	10	11	12	13	14	15	16	17	18	19	20	21	22	23	24	25	26	27	28	29	30	31
	-	-	-	-	-	-	-	-	-	-	-	-	-	-	-	-	-	-	-	-	-	-	-	-	-	-	-	-	-	-	

Feb	Th	F	Sa	Su	M	Tu	W	Th	F	Sa	Su	M	Tu	W	Th	F	Sa	Su	M	Tu	W							
2018	1	2	3	4	5	6	7	8	9	10	11	12	13	14	15	16	17	18	19	20	21	22	23	24	25	26	27	28
	-	-	-	-	-	-	-	-	-	-	-	-	-	-	-	-	-	-	-	-	-	-	-	-	-	-	-	-

Mar	Th	F	Sa	Su	M	Tu	W	Th	F	Sa	Su	M	Tu	W	Th	F	Sa	Su	M	Tu	W	Th	F	Sa							
2018	1	2	3	4	5	6	7	8	9	10	11	12	13	14	15	16	17	18	19	20	21	22	23	24	25	26	27	28	29	30	31
	-	-	-	-	-	-	-	-	-	-	-	-	-	-	-	-	-	-	-	-	-	-	-	-	-	-	-	-	-	-	

Apr	Su	M	Tu	W	Th	F	Sa	Su	M	Tu	W	Th	F	Sa	Su	M	Tu	W	Th	F	Sa	Su	M	Tu						
2018	1	2	3	4	5	6	7	8	9	10	11	12	13	14	15	16	17	18	19	20	21	22	23	24	25	26	27	28	29	30
	-	-	-	-	-	-	-	-	-	-	-	-	-	-	-	-	-	-	-	-	-	-	-	-	-	-	-	-	-	

May	Tu	W	Th	F	Sa	Su	M	Tu	W	Th	F	Sa	Su	M	Tu	W	Th	F	Sa	Su	M	Tu	W	Th							
2018	1	2	3	4	5	6	7	8	9	10	11	12	13	14	15	16	17	18	19	20	21	22	23	24	25	26	27	28	29	30	31
	-	-	-	-	-	-	-	-	-	-	-	-	-	-	-	-	-	-	-	-	-	-	-	-	-	-	-	-	-	-	

June	F	Sa	Su	M	Tu	W	Th	F	Sa	Su	M	Tu	W	Th	F	Sa	Su	M	Tu	W	Th	F	Sa							
2018	1	2	3	4	5	6	7	8	9	10	11	12	13	14	15	16	17	18	19	20	21	22	23	24	25	26	27	28	29	30
	-	-	-	-	-	-	-	-	-	-	-	-	-	-	-	-	-	-	-	-	-	-	-	-	-	-	-	-	-	

 Reserved

Holiday lettings
Côte de Goëlo - France
"Les Hortensias"

8
[Book now](#)

Availability calendar - from : june 2018

Jul	Su	M	Tu	W	Th	F	Sa	Su	M	Tu	W	Th	F	Sa	Su	M	Tu	W	Th	F	Sa	Su	M	Tu							
2018	1	2	3	4	5	6	7	8	9	10	11	12	13	14	15	16	17	18	19	20	21	22	23	24	25	26	27	28	29	30	31

Aug	W	Th	F	Sa	Su	M	Tu	W	Th	F	Sa	Su	M	Tu	W	Th	F	Sa	Su	M	Tu	W	Th	F							
2018	1	2	3	4	5	6	7	8	9	10	11	12	13	14	15	16	17	18	19	20	21	22	23	24	25	26	27	28	29	30	31

Reserved

[Month : Next >>](#)

Rental rates - Maisonette - from 2 to 3 Person(s)

Rates	Night	Weekend	week	2 weeks	Month
 Low season	-	£134*	£251*	-	-
 Mid season	-	£134*	£314*	-	-
 High season	-	-	£349* (Saturday)	-	-
 Festive specials	-	-	£269*	-	-
 Promotional period	-	-	£269* (Saturday)	-	-

(Check-in day)

[Book now](#)



bedroom

bedroom

shower room



Kitchen Area



Interior facilities

Booking conditions

• Reservation

- Payment made upon reservation : £90*
- Payment balance :
on handing over the keys
- Deposit required : £269*

• rentals

- Day tax in addition
- Anticipated supplement for :
- supplementary bed(s)

Accepted methods of payment

- Bank transfer (wire) • Cheque • Cash

Contact

Spoken languages



► [Book now](#)

► [Contact the owner](#)

Contact directly the property owners

www.ihacom.co.uk

Advert No.

15666

>> [Book now](#) <<

* Converted at the rate indicated : €100 = \$117.29 = £89.59

Advert No. 15666

www.ihacom.co.uk

