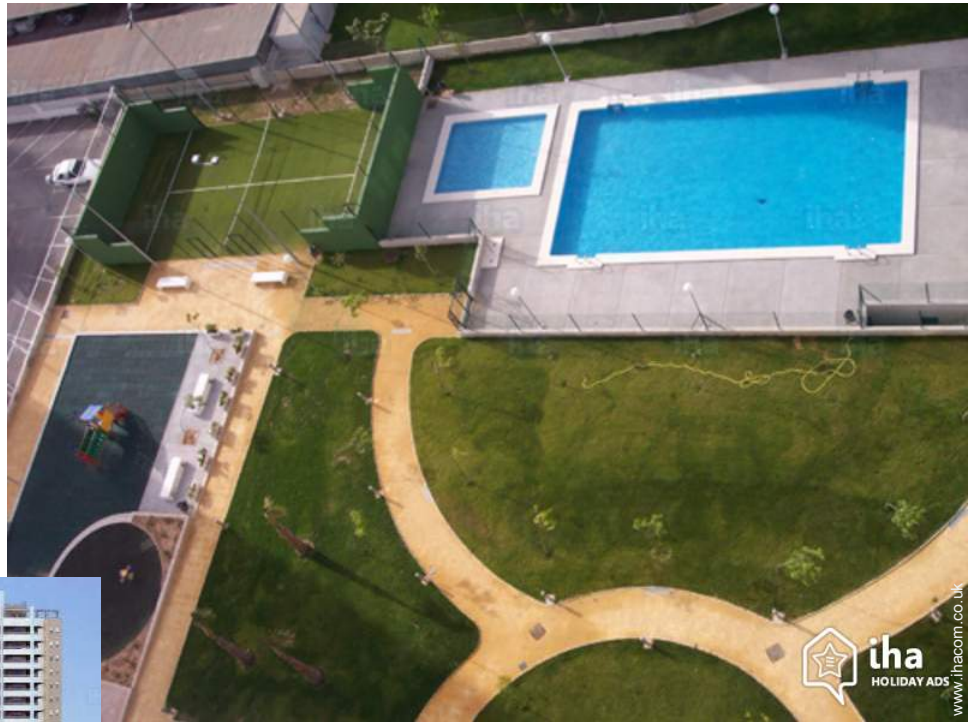


Holiday lettings Benidorm "Parque Torresol"



Flat-Apartments 17th floor, shared entrance, in a(an) Modern block of flats 19 floors

Setting : peaceful, luxurious

Capacity : from 1 to 6 person(s)

Bedroom(s) : 3

Room(s) : 2

Benidorm - Province of Alicante - Valencian Community
Spain

Advert No. 9045

www.ihacom.co.uk



>> HOLIDAY LETTINGS

BOOK DIRECT WITH THE OWNERS

Holiday lettings



Flat-Apartments 17th floor, shared entrance, in a(an) Modern block of flats 19 floors

- **Ideal for family, large families**
- **View :** panoramic, unobscured, dominant, sea/ocean, swimming pool, nightlights
- **Setting :** peaceful, luxurious
- **Exposure :** South

Assets

- **Swimming pool :**
Shared swimming pool, rectangular (length 65', width 20'), step ladder, outside shower (open from '01 january' till '31 december')
- **Tennis :**
Private tennis
- **Parking :**
Covered parking : 2 closed individual place (s).
- **baby equipment :**
Playpen



block of flats

Surroundings & location



Leisure

- **Leisure activities less than 20 km / 12 miles :**

Bathing, snorkelling, scuba diving, scuba diving (Standard diving dress), banana boat, water skiing, golf, tennis, squash, coastal/ forest paths, hiking, boat trips, horse trekking, mini-golf, go-karting, paintball, safari, fishing, angling, spear fishing

- **Attractions and relaxation :**

Bar/pub, discotheque, restaurant, cinema, karaoke, park and garden, leisure park, zoo/ animal park, sea world, exhibition centre, art gallery, historical site, museum, local craftshop, cellar and wine tasting, casino, thalassotherapy centre, sauna, steam baths, health farm, beauticians, fitness centre

Surroundings

- **Locality :**
Heated swimming pool 330'
Sea/ocean 990'
Sandy beach 990'
Nudist beach 0.93mi.
Public swimming pool 0.93mi.
Public tennis court 0.62mi.
9 hole golf course 9mi.
Watersports centre 2.5mi.
Cliff 1.25mi.
- **Amenities :**
Nursery 0.62mi.
Village centre <165'
Town centre 0.5mi.
Bus stop / bus station
Tube station
Car rental 0.3mi.
Boat rental 3mi.
Scuba diving material hire 0.3mi.
Household linens for hire/laundry services
Breadshop 990'
Local shops 330'
Supermarket 990'
High class retailers 0.5mi.
Hairdressing salon 660'
Internet cafe 330'
Post office 0.3mi.
Bank 660'
Cash point 660'
Chemist 990'
Doctor 990'
Hospital 0.3mi.



Swimming pool



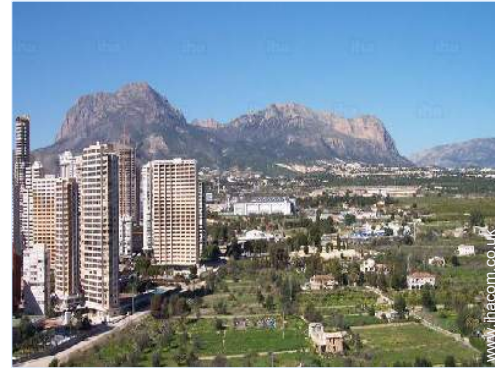
Swimming pool



Tennis

Exterior

- **Ground surface :**
1 acre
- **Outside accommodation :**
Covered terrace 323 Sq.ft., sundeck > 2,150 Sq.ft.
- **Outside setting :**
Garden, lawn
- **Outside amenities :**
Garden seated area, sand pit, outside shower facilities



northerly view

Interior

- **Receive up to :**
from 1 to 6 person(s) (6 adults)
- **Liveable floor area :**
1,076 Sq.ft.
- **Interior layout :**
2 Room(s), 3 bedroom(s), 2 bathroom, sitting room 323 Sq.ft., separate kitchen, dining room
- **Sleeps - bed(s) :**
1 double bed(s), 4 super king-size bed(s), 2 single bed(s)
- **Guest facilities :**
Lift, T.V., DVD player, t.v points, cable/satellite, internet access, wifi, cupboard, fully air conditioned, central heating, Glazed in area, Curtains, Double glazed, Rolling shutters, electric shutters, entry phone system, fire alarm
- **Appliances :**
Crockery/cutlery, kitchen utensils, cafetiere, electric coffee maker, electric espresso coffee maker, electric kettle, toaster, juicer, electric cooker, electric hobs, oven, microwave oven, extractor hood, refrigerator, freezer, washing machine, iron, ironing board

Services

- **Washing :**
Sheets, Towels, Blanket(s), Quilt(s), Pillows
- **House :**
Cleaning on departure, Garden/swimming pool maintenance, Caretaker/concierge, Parking

For your guidance

- **For your guidance**
Children welcome
Pets accepted under certain conditions (ask the owner)
Mobile telephone network coverage
Water : hot/cold
Local voltage supply : 220-240V / 50Hz
Electricity supply : mains



sea view

Floor plan

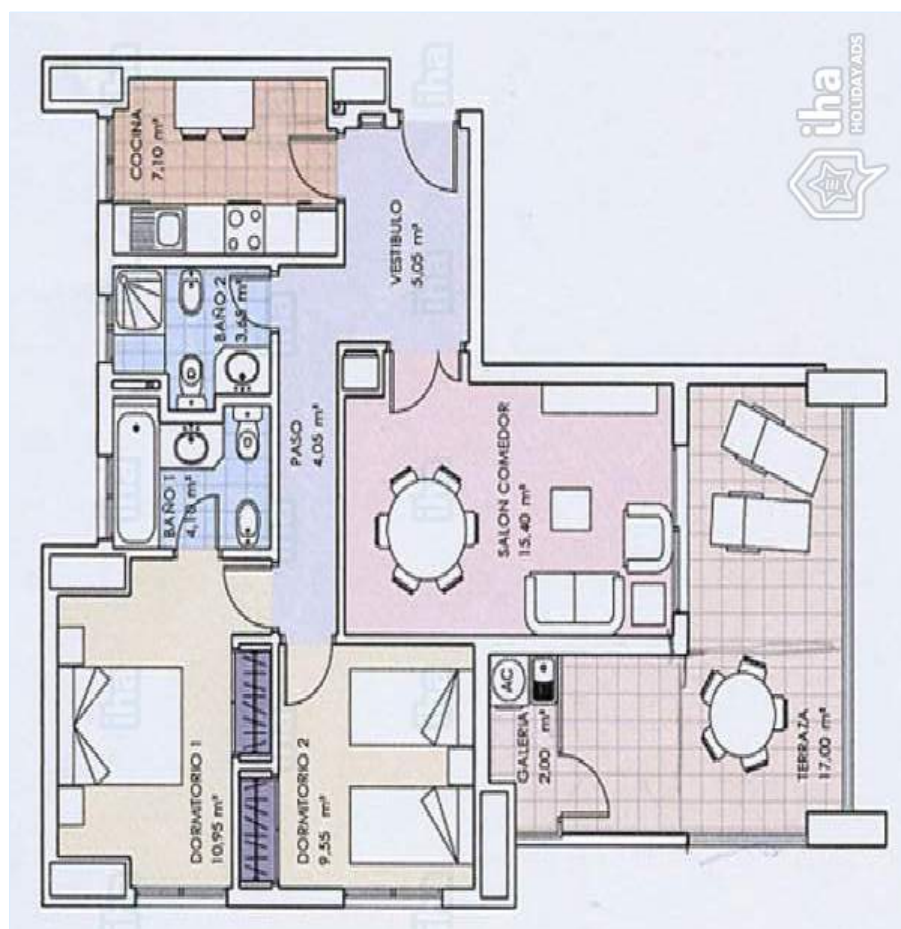


Photo album - 1



block of flats



Swimming pool



Swimming pool



Tennis



sea view

Photo album - 2



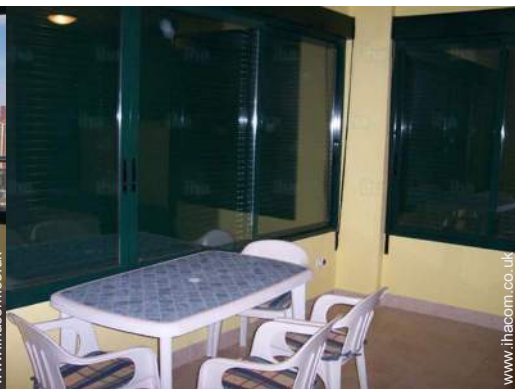
northerly view



covered terrace



covered terrace



covered terrace



the house

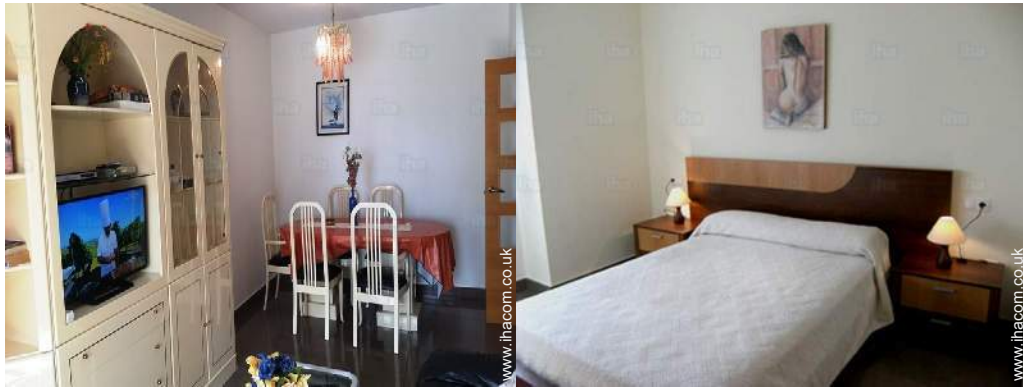


the house



sitting room

Photo album - 3



sitting room

master bedroom



bedroom

Kitchen Area



sleeping nook

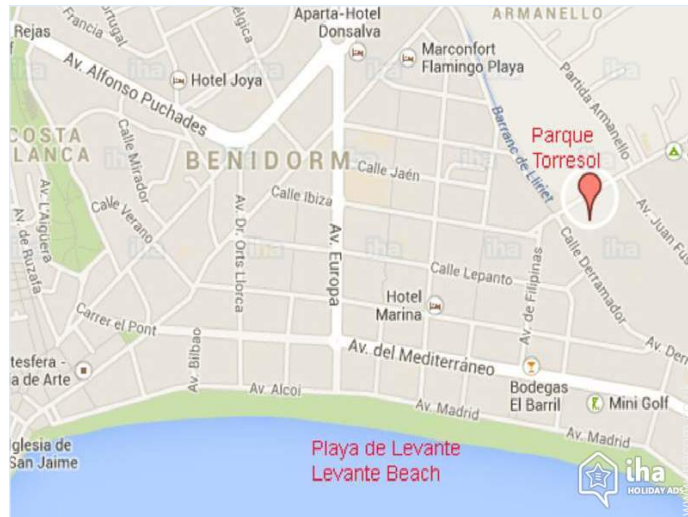
bathroom



bathroom

washing machine

Route map



Location & Access



GPS coordinates in degrees, minutes, seconds: Latitude 38° 32'24"N - Longitude 0°6'45"W (Dwelling)

Address

→ Av. Almirante Bernat de Sarriá 6
03501 Benidorm

• **Airport Alicante**

→ Alicante, Province of Alicante, Valencian Community, Spain
→ Distance : 37,3mi.
→ Time : 50'

• **Coach station Benidorm**

→ Benidorm, Province of Alicante, Valencian Community, Spain
→ Distance : 0.5mi.
→ Time : 10'

• **Motorway (junction) A7**

→ Benidorm, Province of Alicante, Valencian Community, Spain
→ Distance : 0.62mi.
→ Time : 15'

- Alicante : (28mi.)
- Altea : (2.5mi.)
- Calpe : (9mi.)

Contact

Spoken languages



Location



Holiday lettings Valencian Community - Benidorm "Parque Torresol"

10
[Book now](#)

Availability calendar - from : january 2019

Jan	Tu	W	Th	F	Sa	Su	M	Tu	W	Th	F	Sa	Su	M	Tu	W	Th	F	Sa	Su	M	Tu	W	Th							
2019	1	2	3	4	5	6	7	8	9	10	11	12	13	14	15	16	17	18	19	20	21	22	23	24	25	26	27	28	29	30	31
																				-	-	-	-	-	-	-	-	-	-	-	-

Feb	F	Sa	Su	M	Tu	W	Th	F	Sa	Su	M	Tu	W	Th	F	Sa	Su	M	Tu	W	Th								
2019	1	2	3	4	5	6	7	8	9	10	11	12	13	14	15	16	17	18	19	20	21	22	23	24	25	26	27	28	
	-	-	-	-	-	-	-	-	-	-	-	-	-	-	-	-	-	-	-	-	-	-	-	-	-	-	-	-	-

Mar	F	Sa	Su	M	Tu	W	Th	F	Sa	Su	M	Tu	W	Th	F	Sa	Su	M	Tu	W	Th	F	Sa	Su							
2019	1	2	3	4	5	6	7	8	9	10	11	12	13	14	15	16	17	18	19	20	21	22	23	24	25	26	27	28	29	30	31
	-	-	-	-	-	-	-	-	-	-	-	-	-	-	-	-	-	-	-	-	-	-	-	-	-	-	-	-	-	-	

Apr	M	Tu	W	Th	F	Sa	Su	M	Tu	W	Th	F	Sa	Su	M	Tu	W	Th	F	Sa	Su	M	Tu	W	Th	F	Sa	Su		
2019	1	2	3	4	5	6	7	8	9	10	11	12	13	14	15	16	17	18	19	20	21	22	23	24	25	26	27	28	29	30
	-	-	-	-	-	-	-	-	-	-	-	-	-	-	-	-	-	-	-	-	-	-	-	-	-	-	-	-	-	-

May	W	Th	F	Sa	Su	M	Tu	W	Th	F	Sa	Su	M	Tu	W	Th	F	Sa	Su	M	Tu	W	Th	F	Sa	Su	M	Tu	W	Th	F
2019	1	2	3	4	5	6	7	8	9	10	11	12	13	14	15	16	17	18	19	20	21	22	23	24	25	26	27	28	29	30	31
	-	-	-	-	-	-	-	-	-	-	-	-	-	-	-	-	-	-	-	-	-	-	-	-	-	-	-	-	-	-	-

June	Sa	Su	M	Tu	W	Th	F	Sa	Su	M	Tu	W	Th	F	Sa	Su	M	Tu	W	Th	F	Sa	Su							
2019	1	2	3	4	5	6	7	8	9	10	11	12	13	14	15	16	17	18	19	20	21	22	23	24	25	26	27	28	29	30
	-	-	-	-	-	-	-	-	-	-	-	-	-	-	-	-	-	-	-	-	-	-	-	-	-	-	-	-	-	-

Jul	M	Tu	W	Th	F	Sa	Su	M	Tu	W	Th	F	Sa	Su	M	Tu	W	Th	F	Sa	Su	M	Tu	W	Th	F	Sa	Su	M	Tu	W
2019	1	2	3	4	5	6	7	8	9	10	11	12	13	14	15	16	17	18	19	20	21	22	23	24	25	26	27	28	29	30	31
	-	-	-	-	-	-	-	-	-	-	-	-	-	-	-	-	-	-	-	-	-	-	-	-	-	-	-	-	-	-	-

Aug	Th	F	Sa	Su	M	Tu	W	Th	F	Sa	Su	M	Tu	W	Th	F	Sa	Su	M	Tu	W	Th	F	Sa	Su	M	Tu	W	Th	F	Sa
2019	1	2	3	4	5	6	7	8	9	10	11	12	13	14	15	16	17	18	19	20	21	22	23	24	25	26	27	28	29	30	31
	-	-	-	-	-	-	-	-	-	-	-	-	-	-	-	-	-	-	-	-	-	-	-	-	-	-	-	-	-	-	-

Sep	Su	M	Tu	W	Th	F	Sa	Su	M	Tu	W	Th	F	Sa	Su	M	Tu	W	Th	F	Sa	Su	M	Tu	W	Th	F	Sa	Su	M
2019	1	2	3	4	5	6	7	8	9	10	11	12	13	14	15	16	17	18	19	20	21	22	23	24	25	26	27	28	29	30
	-	-	-	-	-	-	-	-	-	-	-	-	-	-	-	-	-	-	-	-	-	-	-	-	-	-	-	-	-	-

Oct	Tu	W	Th	F	Sa	Su	M	Tu	W	Th	F	Sa	Su	M	Tu	W	Th	F	Sa	Su	M	Tu	W	Th	F	Sa	Su	M	Tu	W	Th
2019	1	2	3	4	5	6	7	8	9	10	11	12	13	14	15	16	17	18	19	20	21	22	23	24	25	26	27	28	29	30	31
	-	-	-	-	-	-	-	-	-	-	-	-	-	-	-	-	-	-	-	-	-	-	-	-	-	-	-	-	-	-	



Holiday lettings
Province of Alicante - Benidorm
"Parque Torresol"

11
[Book now](#)





Availability calendar - from : october 2019

Nov	F	Sa	Su	M	Tu	W	Th	F	Sa	Su	M	Tu	W	Th	F	Sa	Su	M	Tu	W	Th	F	Sa							
2019	1	2	3	4	5	6	7	8	9	10	11	12	13	14	15	16	17	18	19	20	21	22	23	24	25	26	27	28	29	30
	-	-	-	-	-	-	-	-	-	-	-	-	-	-	-	-	-	-	-	-	-	-	-	-	-	-	-	-	-	

Dec	Su	M	Tu	W	Th	F	Sa	Su	M	Tu	W	Th	F	Sa	Su	M	Tu	W	Th	F	Sa	Su	M	Tu							
2019	1	2	3	4	5	6	7	8	9	10	11	12	13	14	15	16	17	18	19	20	21	22	23	24	25	26	27	28	29	30	31
	-	-	-	-	-	-	-	-	-	-	-	-	-	-	-	-	-	-	-	-	-	-	-	-	-	-	-	-	-	-	

[Month : Next >>](#)

Rental rates - Flat-Apartments - from 1 to 6 Person(s)

Rates	Night	Weekend	week	2 weeks	Month
 Low season	-	-	£356*	£579*	£757*
 Mid season	-	-	£423*	£712*	£1335*
 High season	-	-	£846*	£1691*	-
 Promotional period	-	-	£356*	-	-

[Book now](#)

Booking conditions

• Reservation

- Payment made upon reservation : £223*
- Payment balance :
on handing over the keys
- Deposit required : £223*

• rentals

- Service charges included
- Day tax included

Accepted methods of payment

- Visa/Delta/Electron
- International Money Order
- Bank transfer (wire)
- MasterCard/EuroCard
- Cheque
- PayPal
- Cash

[▶ Book now](#)

[▶ Contact the owner](#)

Contact directly the property owners

www.ihacom.co.uk

Advert No.

9045

[>> Book now <<](#)

Contact

Spoken languages



* Converted at the rate indicated : €100 = \$116.85 = £89

Advert No. 9045

www.ihacom.co.uk

