

Holiday lettings Barberino di Mugello Tuscany House

Country house in Barberino di Mugello.



Tuscany House, detached, single storey, separate entrance, in a(an) Private property

Setting : suitable for a relaxing break, tranquil

Capacity : from 2 to 6 person(s)

Bedroom(s) : 3

Room(s) : 5



Theme breaks
Romantic break
Valentine's Day

Barberino di Mugello - Province of Florence (FI) - Tuscany
Italy

Advert No. 36532

www.ihacom.co.uk



Holiday lettings



Tuscany House, detached, single storey, separate entrance, in a(an) Private property

- **Ideal for all age groups, family**
- **View :** panoramic, unobscured, not overlooked, country side, garden/park, lake, nightlights
- **Setting :** suitable for a relaxing break, tranquil

" Located on the green hills of our beautiful Mugello land the House is the perfect place to rest relax and enjoy the beautiful nature that surrounds it. Can be reached without difficulty in fact paved all the way. Distance from the exit of the A1 motorway (Autostrada del Sole) about 2.5 km and 4 Km from the village of vicchio where you can find all the necessary amenities such as shops and supermarkets. Nearby is also an outlet where you can go shopping. The House consists of a large kitchen with fireplace an inlet overlooked by 3 bedrooms and a bathroom. Outside there is a small garden with umbrella and chairs practical for eating outdoors. The House offers a beautiful view of the Lake of Bilancino and surrounding valleys. You can practice sports such as mountain biking hiking through the trails. Mugello ... land of artists come! You will be ... Welcome ... We are waiting for you! "

Assets

- **Parking :**
Parking uncovered : 1 off road.

Surroundings & location



Countryside



Culture

" In your free time you can visit the various small villages such as Galliano, Saint Agatha with its beautiful Pieve, San Piero a Sieve, Scarperia with its Palazzo dei Vicari, Borgo San Lorenzo, Vicchio birthplace of Giotto and Fra Angelico. Here you will find the birthplace of Giotto and a nice little museum devoted to Beato Angelico. You can taste typical products from Mugello in local venues such as bars and restaurants in the area The Mugello dish are the tortelli di patate. You can reach Florence for a visit, in fact, the town is about 30 km away and is easily accessible for a dive in the art and history ... "

Leisure

- **Leisure activities less than 20 km / 12 miles :**
Bathing, windsurfing, sailing, canoeing, hiking, mountain bike (path), horse trekking, donkey rides, racing circuit

Surroundings

- **Locality :**
Lake 1.85mi.
- **Amenities :**
Breadshop 2.5mi.
Local shops 2.5mi.
Supermarket 2.5mi.
High class retailers 1.5mi.
Post office 2.5mi.
Bank 2.5mi.
Chemist 2.5mi.
Hospital 9mi.



sofa bed(s) 2 pers



view from the kitchen



the decor

Interior

- **Receive up to :**
from 2 to 6 person(s)
- **Liveable floor area :**
1,300 Sq.ft.
- **Interior layout :**
5 Room(s), 3 bedroom(s), sleeping area, 1 bathroom, living room 130 Sq.ft., large separate kitchen, dining room, tv room
- **Sleeps - bed(s) :**
2 double bed(s), 1 sofa bed(s) 2 pers, 2 possible extra bed(s)
- **Guest facilities :**
Fireplace, T.V., wardrobe, hair dryer, power shower, fly screens, central heating, Curtains
- **Appliances :**
Crockery/cutlery, cafetiere, electric espresso coffee maker, gas cooker, oven, extractor hood, refridgerator, dish washer, washing machine, iron, ironing board

Exterior

- **Outside accommodation :**
Gazebo
- **Outside setting :**
Garden 215 Sq.ft.
- **Outside amenities :**
Garden table(s), 6 garden seat(s), parasol



view over the lake

Services

- **Washing :**
Sheets (1 X / per week), Towels, Linen, Blanket(s), Pillows
- **House :**
Cleaning on departure supplement (+£9*)

For your guidance

- **For your guidance**
Children welcome
Pets accepted
Present on site : pets, farm animals
Mobile telephone network coverage
Water : hot/cold
Local voltage supply : 220-240V / 50Hz



fly screens

Photo album - 1



view from the kitchen



sofa bed(s) 2 pers

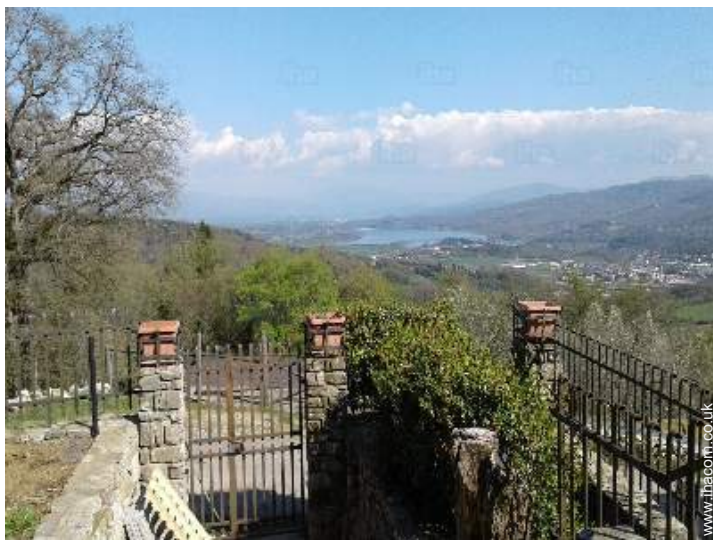


the decor



fly screens

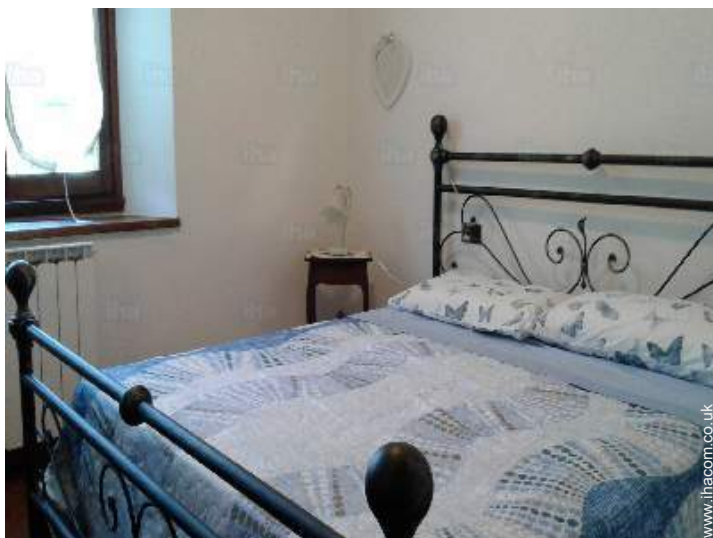
Photo album - 2



view over the lake



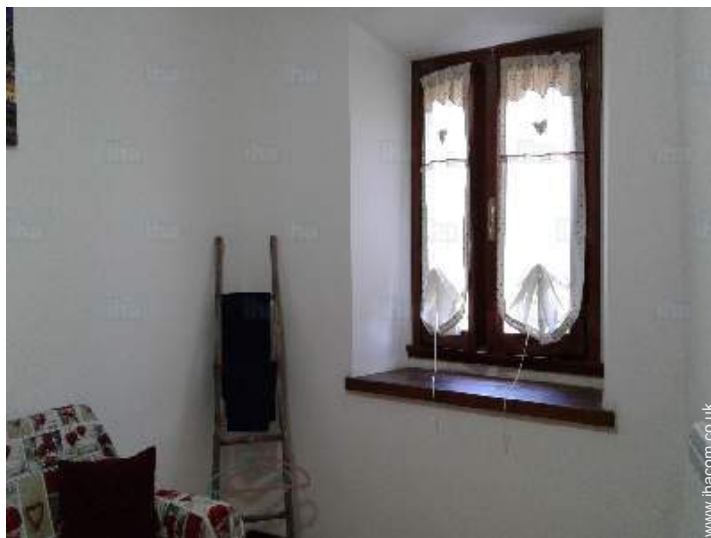
bedroom



view from the bedroom



view from the bedroom



view from the bedroom

[Theme breaks](#)

Romantic break

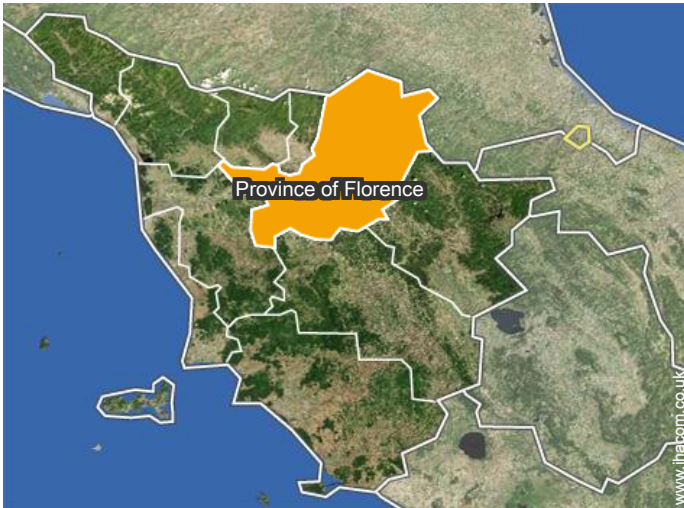
Indicated duration : 2 days
Participant(s) : 2 min
From £116 for 2 person(s)

All year long, On request (groups)

Valentine's Day

Indicated duration : 1 day
Participant(s) : 2 min
From £89 for 2 person(s)

Location



Location & Access

" 2.5 km A1 motorway 4 Km from Barberino di Mugello "



GPS coordinates in degrees, minutes, seconds: Latitude 43°59'53"N - Longitude 11° 11'40"E (Dwelling)

Address

→ Via Di Pulica,9
50031 Barberino di Mugello

Motorway (junction) AUTOSTRADA DEL SOLO A1

→ Barberino di Mugello, Province of Florence, Tuscany, Italy
→ Distance : 2.5mi.
→ Time : 10'

Airport Florence Amerigo Vespucci

→ Florence, Province of Florence, Tuscany, Italy
→ Distance : 13,7mi.
→ Time : 45'

Train station San Piero a Sieve

→ San Piero a Sieve, Province of Florence,

Tuscany, Italy

→ Distance : 6mi.
→ Time : 45'

- Florence : (13,7mi.)
- Calenzano : (9mi.)
- Borgo San Lorenzo : (9mi.)

Contact

Spoken languages



Holiday lettings Province of Florence - Tuscany Tuscany House

[Book now](#)

Availability calendar - from : august 2018

Aug	W	Th	F	Sa	Su	M	Tu	W	Th	F	Sa	Su	M	Tu	W	Th	F	Sa	Su	M	Tu	W	Th	F							
2018	1	2	3	4	5	6	7	8	9	10	11	12	13	14	15	16	17	18	19	20	21	22	23	24	25	26	27	28	29	30	31

Sep	Sa	Su	M	Tu	W	Th	F	Sa	Su	M	Tu	W	Th	F	Sa	Su	M	Tu	W	Th	F	Sa	Su							
2018	1	2	3	4	5	6	7	8	9	10	11	12	13	14	15	16	17	18	19	20	21	22	23	24	25	26	27	28	29	30

Oct	M	Tu	W	Th	F	Sa	Su	M	Tu	W	Th	F	Sa	Su	M	Tu	W	Th	F	Sa	Su	M	Tu	W							
2018	1	2	3	4	5	6	7	8	9	10	11	12	13	14	15	16	17	18	19	20	21	22	23	24	25	26	27	28	29	30	31

Nov	Th	F	Sa	Su	M	Tu	W	Th	F	Sa	Su	M	Tu	W	Th	F	Sa	Su	M	Tu	W	Th	F								
2018	1	2	3	4	5	6	7	8	9	10	11	12	13	14	15	16	17	18	19	20	21	22	23	24	25	26	27	28	29	30	

Dec	Sa	Su	M	Tu	W	Th	F	Sa	Su	M	Tu	W	Th	F	Sa	Su	M	Tu	W	Th	F	Sa	Su	M							
2018	1	2	3	4	5	6	7	8	9	10	11	12	13	14	15	16	17	18	19	20	21	22	23	24	25	26	27	28	29	30	31

Jan	Tu	W	Th	F	Sa	Su	M	Tu	W	Th	F	Sa	Su	M	Tu	W	Th	F	Sa	Su	M	Tu	W	Th							
2019	1	2	3	4	5	6	7	8	9	10	11	12	13	14	15	16	17	18	19	20	21	22	23	24	25	26	27	28	29	30	31

Feb	F	Sa	Su	M	Tu	W	Th	F	Sa	Su	M	Tu	W	Th	F	Sa	Su	M	Tu	W	Th									
2019	1	2	3	4	5	6	7	8	9	10	11	12	13	14	15	16	17	18	19	20	21	22	23	24	25	26	27	28		

Mar	F	Sa	Su	M	Tu	W	Th	F	Sa	Su	M	Tu	W	Th	F	Sa	Su	M	Tu	W	Th	F	Sa	Su							
2019	1	2	3	4	5	6	7	8	9	10	11	12	13	14	15	16	17	18	19	20	21	22	23	24	25	26	27	28	29	30	31

Apr	M	Tu	W	Th	F	Sa	Su	M	Tu	W	Th	F	Sa	Su	M	Tu	W	Th	F	Sa	Su	M	Tu								
2019	1	2	3	4	5	6	7	8	9	10	11	12	13	14	15	16	17	18	19	20	21	22	23	24	25	26	27	28	29	30	

May	W	Th	F	Sa	Su	M	Tu	W	Th	F	Sa	Su	M	Tu	W	Th	F	Sa	Su	M	Tu	W	Th	F							
2019	1	2	3	4	5	6	7	8	9	10	11	12	13	14	15	16	17	18	19	20	21	22	23	24	25	26	27	28	29	30	31

- Reserved
- High season
- Mid season
- Low season
- Festive specials



Holiday lettings Barberino di Mugello - Italy Tuscany House

9

[Book now](#)

Availability calendar - from : may 2019

June	Sa	Su	M	Tu	W	Th	F	Sa	Su	M	Tu	W	Th	F	Sa	Su	M	Tu	W	Th	F	Sa	Su							
2019	1	2	3	4	5	6	7	8	9	10	11	12	13	14	15	16	17	18	19	20	21	22	23	24	25	26	27	28	29	30
-	-	-	-	-	-	-	-	-	-	-	-	-	-	-	-	-	-	-	-	-	-	-	-	-	-	-	-	-	-	

Jul	M	Tu	W	Th	F	Sa	Su	M	Tu	W	Th	F	Sa	Su	M	Tu	W	Th	F	Sa	Su	M	Tu	W							
2019	1	2	3	4	5	6	7	8	9	10	11	12	13	14	15	16	17	18	19	20	21	22	23	24	25	26	27	28	29	30	31
-	-	-	-	-	-	-	-	-	-	-	-	-	-	-	-	-	-	-	-	-	-	-	-	-	-	-	-	-	-		

- Reserved
- High season
- Mid season
- Low season
- Festive specials

[Month : Next >>](#)

Rental rates - Tuscany House - from 2 to 6 Person(s)

Rates	Night	Weekend	week	2 weeks	Month
 Low season	£45* > 2	£116* (Friday)	£312*	£623*	£1246*
 Mid season	£58* > 2	£134* (Friday)	£405*	£810*	£1620*
 High season	£71* > 2	£160* (Friday)	£498*	£997*	£1994*
 Festive specials	£71* > 2	£214*	£498*	£997*	£1994*

(Check-in day) > Minimum Night

[Book now](#)



the decor



fly screens



view over the lake



view from the kitchen



sofa bed(s) 2 pers

Booking conditions

- **Reservation**

- Payment balance :
10 days before the stay
- Deposit required : £134*

- **rentals**

- Service charges included
- Day tax in addition
- Cleaning charge levy on departure : £9*

Accepted methods of payment

- Visa/Delta/Electron
- International Money Order
- Bank transfer (wire)
- MasterCard/EuroCard
- Cash

▶ [Book now](#)

▶ [Contact the owner](#)

Contact directly the property owners

www.ihacom.co.uk

Advert No.

36532

>> [Book now](#) <<

Contact

Spoken languages



* Converted at the rate indicated : €100 = \$116.85 = £89

Advert No. 36532

www.ihacom.co.uk

