

Holiday lettings Audresselles "Le Chou Marin"

-In the heart of the Pas de Calais Audresselles, home of the flobarts and the beautiful beaches of the Opal Coast, in a natural setting remarkably well protected and energizing.



House, semi-detached, 1 floor, separate entrance, in a(an) Property

Setting : natural, seaside

Capacity : from 1 to 6 person(s)

Bedroom(s) : 2

Room(s) : 5

Audresselles - Pas-de-Calais (62) - Nord-Pas de Calais
France

Reservation : +33 (0) 321839276 (France)

Advert No. 6992

www.ihacom.co.uk



Holiday lettings



House, semi-detached, 1 floor, separate entrance, in a(n) Property

- **Ideal for couples, family**
- **View :** sea/ocean, courtyard, street/avenue
- **Setting :** natural, seaside
- **Exposure :** South

" This comfortable home is 200 meters from the sea on 2 levels, includes: - internet Wifi - an integrated kitchen, plate 4 fires, oven, dishwasher, refrigerator, freezer, microwave, coffee maker, machine has pod, electric kettle, Toaster, camera has raclette grill, Multi crêpes Party utensils--a dining room for 6 people with tv - one living room convertible in a room with a sleeping click System clac mattress special sensitive back , TV (TNT channels) + drive DVD - 2 bedrooms with closets (small Seaview) - 1 multi jet shower, sink and furniture storage - a courtyard with dining and barbecue--an outdoor shed with balls games, child bike, children tricycle, Scooter - private for two cars just parking place in front of the House "

Assets

- **Parking :**
Parking uncovered : 2 reserved bay, 2 off road.
- **Advantages :**
2 bike(s), motor boat
- **baby equipment :**
Baby chair, baby bath

Surroundings & location



Seaside



Golf



Horse riding

" Fishing of mussels and crustaceans. Restaurants specialties fish and seafood in the village nearby. Very nice beach with dune and surrounding countryside with hiking trails. Cape Gris Nez, Cap Blanc Nez: Large national sites in France. Nausicaa - National center of the sea is a marine environment discovery centre in Boulogne-sur-Mer. Helicea sports complex, swimming pool and ice rink at 10 km. St Joseph village: Museum reconstruction village of the last century. The European city is a shopping mall located in Coquelles. The Opal Coast factory Coquelles. "

Leisure

- **Leisure activities less than 20 km / 12 miles :**
Bathing, pedalo, scuba diving, golf, riding school, pony club, hiking, climbing, boat trips, horse trekking, mini-golf, ten-pin bowling, basketball, clay pidgeon shooting, fishing, angling, spear fishing, pétanque pitch

- **Supervised :**

Sailing school, riding school

- **Attractions and relaxation :**

Bar/pub, discotheque, restaurant, cinema, museum, theatre, antiques & bric-a-brac, local craftshop

Surroundings

- **Locality :**

Sea/ocean 660'
Sandy beach 660'
Shingle beach 660'
Rocky beach 990'
Watersports centre 4.5mi.
Cliff 0.3mi.
Marina 6mi.
Slipway 0.3mi.
Jetski slipway 0.3mi.

- **Amenities :**

Village centre 660'
Bus stop / bus station 660'
Car rental 6mi.
Breadshop 660'
Local shops 660'
Supermarket 1.5mi.
Hairdressing salon 0.93mi.
Post office 1.5mi.
Bank 1.5mi.
Cash point 1.5mi.
Chemist 1.5mi.
Doctor 0.3mi.
Nurse 990'
Hospital 6mi.





Interior

- **Receive up to :**
from 1 to 6 person(s)
- **Liveable floor area :**
750 Sq.ft.
- **Interior layout :**
5 Room(s), 2 bedroom(s), 1 bathroom, 1 WC, living room 160 Sq.ft., sitting room 160 Sq.ft., separate kitchen, dining room, tv room
- **Sleeps - bed(s) :**
2 double bed(s), 1 sofa bed(s) 2 pers, 1 baby cot(s), 1 possible extra bed(s)
- **Guest facilities :**
T.V., hi-fi system, DVD player, board games, t.v points, telephone, cable/satelite, internet access, high speed internet access, wifi, wardrobe, cupboard, radio alarmclock, electric heating, Skylights, Curtains, Blinds, Double glazed, Rolling shutters
- **Appliances :**
Crockery/cuttlery, kitchen utensils, cafetiere, electric coffee maker, electric espresso coffee maker, electric kettle, toaster, juicer, electric raclette set, gas cooker, mini-oven, micro-wave oven, extractor hood, refridgerator, freezer, dish washer, vacuum cleaner

Exterior

- **Ground surface :**
< 1,076 Sq.ft.
- **Outside setting :**
Private courtyard 215 Sq.ft., enclosed grounds < 1,076 Sq.ft., garden 215 Sq.ft.
- **Outside amenities :**
BBQ, garden table(s), 6 garden seat(s), parasol, garden seated area, 4 sun recliner (s)



Services

- **Washing :**
Sheets supplement (1 X / per week), Blanket (s) (1 X / per week), Quilt(s) (1 X / per week), Pillows (1 X / per week)
- **House :**
Cleaning on departure supplement (+£36*)

For your guidance

- **For your guidance**
Children welcome
Pets accepted under certain conditions (ask the owner)
Non smoking rental, mobile telephone network coverage



www.ihacom.co.uk

Advert No. 6992

Holiday lettings
Nord-Pas de Calais - Audresselles
"Le Chou Marin"

4

[Book now](#)

Photo album - 1



Advert No. 6992

www.ihacom.co.uk



>> HOLIDAY LETTINGS

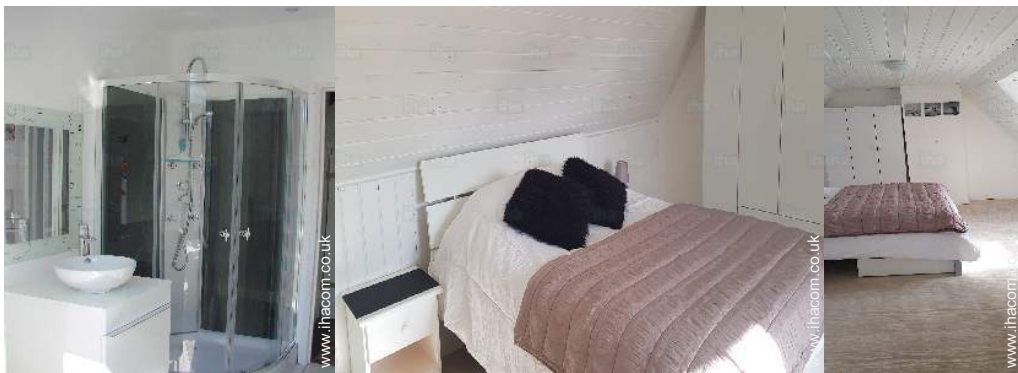
BOOK DIRECT WITH THE OWNERS

Photo album - 2



sitting room

T.V.



bathroom

bedroom



garden

Photo album - 3



aerial view



aerial view



Surroundings



easterly view



view over the sea



Seaside



sandy beach



Location



Location & Access

" This House is located at Audresselles, close to the beaches of the Opal Coast, marinas and fishing ports,-from the village centre, restaurants, convenience stores... - the equestrian centres - golf course located on the edge of sea - paths, hiking trails - boating on sea "



GPS coordinates in degrees, minutes, seconds: Latitude 50°49'22"N - Longitude 1° 35'38"E (Dwelling)

Address

→ 296 Rue Gustave Danquin
62164 Audresselles

• Motorway (junction) A16

→ Marquise, Pas-de-Calais, Nord-Pas de Calais, France

→ Distance : 6mi.

→ Time : 10'

• Train station Wimille Wimereux

→ Wimille, Pas-de-Calais, Nord-Pas de Calais, France

→ Distance : 4.5mi.

→ Time : 10'

• Sea port Calais

→ Calais, Pas-de-Calais, Nord-Pas de Calais, France

→ Distance : 15.5mi.

→ Time : 30'

• Wissant : (6mi.)

• Wimereux : (4.5mi.)

• Boulogne-sur-Mer : (7,5mi.)

Contact

Spoken languages



Holiday lettings Pas-de-Calais - Nord-Pas de Calais "Le Chou Marin"

[Book now](#)

Availability calendar - from : september 2019

Sep	Su	M	Tu	W	Th	F	Sa	Su	M	Tu	W	Th	F	Sa	Su	M	Tu	W	Th	F	Sa	Su	M							
2019	1	2	3	4	5	6	7	8	9	10	11	12	13	14	15	16	17	18	19	20	21	22	23	24	25	26	27	28	29	30

Oct	Tu	W	Th	F	Sa	Su	M	Tu	W	Th	F	Sa	Su	M	Tu	W	Th	F	Sa	Su	M	Tu	W	Th							
2019	1	2	3	4	5	6	7	8	9	10	11	12	13	14	15	16	17	18	19	20	21	22	23	24	25	26	27	28	29	30	31
	-	-	-	-	-	-	-	-	-	-	-	-	-	-	-	-	-	-	-	-	-	-	-	-	-	-	-	-	-	-	

Nov	F	Sa	Su	M	Tu	W	Th	F	Sa	Su	M	Tu	W	Th	F	Sa	Su	M	Tu	W	Th	F	Sa							
2019	1	2	3	4	5	6	7	8	9	10	11	12	13	14	15	16	17	18	19	20	21	22	23	24	25	26	27	28	29	30
	-	-	-	-	-	-	-	-	-	-	-	-	-	-	-	-	-	-	-	-	-	-	-	-	-	-	-	-	-	-

Dec	Su	M	Tu	W	Th	F	Sa	Su	M	Tu	W	Th	F	Sa	Su	M	Tu	W	Th	F	Sa	Su	M	Tu							
2019	1	2	3	4	5	6	7	8	9	10	11	12	13	14	15	16	17	18	19	20	21	22	23	24	25	26	27	28	29	30	31
	-	-	-	-	-	-	-	-	-	-	-	-	-	-	-	-	-	-	-	-	-	-	-	-	-	-	-	-	-	-	

Jan	W	Th	F	Sa	Su	M	Tu	W	Th	F	Sa	Su	M	Tu	W	Th	F	Sa	Su	M	Tu	W	Th	F							
2020	1	2	3	4	5	6	7	8	9	10	11	12	13	14	15	16	17	18	19	20	21	22	23	24	25	26	27	28	29	30	31
	-	-	-	-	-	-	-	-	-	-	-	-	-	-	-	-	-	-	-	-	-	-	-	-	-	-	-	-	-	-	

Feb	Sa	Su	M	Tu	W	Th	F	Sa	Su	M	Tu	W	Th	F	Sa	Su	M	Tu	W	Th	F	Sa							
2020	1	2	3	4	5	6	7	8	9	10	11	12	13	14	15	16	17	18	19	20	21	22	23	24	25	26	27	28	29
	-	-	-	-	-	-	-	-	-	-	-	-	-	-	-	-	-	-	-	-	-	-	-	-	-	-	-	-	-

Mar	Su	M	Tu	W	Th	F	Sa	Su	M	Tu	W	Th	F	Sa	Su	M	Tu	W	Th	F	Sa	Su	M	Tu							
2020	1	2	3	4	5	6	7	8	9	10	11	12	13	14	15	16	17	18	19	20	21	22	23	24	25	26	27	28	29	30	31
	-	-	-	-	-	-	-	-	-	-	-	-	-	-	-	-	-	-	-	-	-	-	-	-	-	-	-	-	-	-	

Apr	W	Th	F	Sa	Su	M	Tu	W	Th	F	Sa	Su	M	Tu	W	Th	F	Sa	Su	M	Tu	W	Th							
2020	1	2	3	4	5	6	7	8	9	10	11	12	13	14	15	16	17	18	19	20	21	22	23	24	25	26	27	28	29	30
	-	-	-	-	-	-	-	-	-	-	-	-	-	-	-	-	-	-	-	-	-	-	-	-	-	-	-	-	-	-

May	F	Sa	Su	M	Tu	W	Th	F	Sa	Su	M	Tu	W	Th	F	Sa	Su	M	Tu	W	Th	F	Sa	Su							
2020	1	2	3	4	5	6	7	8	9	10	11	12	13	14	15	16	17	18	19	20	21	22	23	24	25	26	27	28	29	30	31
	-	-	-	-	-	-	-	-	-	-	-	-	-	-	-	-	-	-	-	-	-	-	-	-	-	-	-	-	-	-	

June	M	Tu	W	Th	F	Sa	Su	M	Tu	W	Th	F	Sa	Su	M	Tu	W	Th	F	Sa	Su	M	Tu							
2020	1	2	3	4	5	6	7	8	9	10	11	12	13	14	15	16	17	18	19	20	21	22	23	24	25	26	27	28	29	30
	-	-	-	-	-	-	-	-	-	-	-	-	-	-	-	-	-	-	-	-	-	-	-	-	-	-	-	-	-	-

Mid season



Holiday lettings Audresselles - France "Le Chou Marin"

9

[Book now](#)

Availability calendar - from : june 2020

Jul	W	Th	F	Sa	Su	M	Tu	W	Th	F	Sa	Su	M	Tu	W	Th	F	Sa	Su	M	Tu	W	Th	F							
2020	1	2	3	4	5	6	7	8	9	10	11	12	13	14	15	16	17	18	19	20	21	22	23	24	25	26	27	28	29	30	31
	-	-	-	-	-	-	-	-	-	-	-	-	-	-	-	-	-	-	-	-	-	-	-	-	-	-	-	-	-	-	

Aug	Sa	Su	M	Tu	W	Th	F	Sa	Su	M	Tu	W	Th	F	Sa	Su	M	Tu	W	Th	F	Sa	Su	M							
2020	1	2	3	4	5	6	7	8	9	10	11	12	13	14	15	16	17	18	19	20	21	22	23	24	25	26	27	28	29	30	31
	-	-	-	-	-	-	-	-	-	-	-	-	-	-	-	-	-	-	-	-	-	-	-	-	-	-	-	-	-	-	

Mid season

[Month : Next >>](#)

Rental rates - House - from 1 to 6 Person(s)

Rates	Night	Weekend	week	2 weeks	Month
<input type="checkbox"/> Low season	-	£137* (Friday)	£273*	-	-
<input type="checkbox"/> Mid season	-	£159* (Friday)	£387* (Saturday)	-	-
<input type="checkbox"/> High season	-	-	£478* (Saturday)	-	-

(Check-in day)

[Book now](#)

Booking conditions

• Reservation

- Payment made upon reservation : £137*
- Payment balance :
on handing over the keys
- Deposit required : £137*

• rentals

- Service charges included
- Day tax in addition
- Cleaning charge levy on departure : £41*
- Anticipated supplement for :
- animals

[▶ Book now](#)

[▶ Contact the owner](#)

Accepted methods of payment

- International Money Order
- Bank transfer (wire)
- Cheque
- Bankers draft
- PayPal
- Cash
- Holiday voucher

Contact directly the property owners

www.ihacom.co.uk

Advert No.

6992

[>> Book now <<](#)

Contact

Spoken languages



* Converted at the rate indicated : €100 = \$110 = £91

Advert No. 6992

www.ihacom.co.uk



[>> HOLIDAY LETTINGS](#)

[BOOK DIRECT WITH THE OWNERS](#)