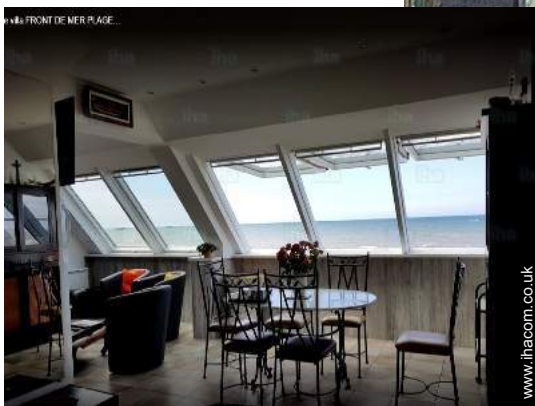


Holiday lettings Asnelles "Plage Normande"

Contemporary villa - rural house in true waterfront in the heart of the Normandy landing beaches. Direct access to the sandy beach.



Villa, detached, single storey, separate entrance, in a(an) Property

Setting : waterfront, rural

Capacity : 6 person(s)

Bedroom(s) : 3

Room(s) : 5



Gîtes de France (3 ears)

Asnelles - Calvados (14) - Lower Normandy

France

Reservation : +33 (0) 2 31 80 69 31 (France)

Advert No. 890

www.ihacom.co.uk



>> HOLIDAY LETTINGS

BOOK DIRECT WITH THE OWNERS

Holiday lettings



Villa, detached, single storey, separate entrance, in a(an) Property

- View : panoramic, unobscured, not overlooked, dominant, sea/ocean, fantastic sunset
- Setting : waterfront, rural
- Exposure : South

" GROUND floor: 2 bedrooms with 1 double bed and 2 single beds (sea and garden view) a bathroom with vessel sink, shower and WC, an extra WC independent. Upstairs: 1 bedroom with 1 double bed and 1 shower room. Day rooms upstairs (dining room, lounge, kitchen and loggia) offer through large glazed surfaces, exceptional panoramas and sunsets on the beaches, the sea, the natural area of Meuvaines and the remains of the historic port of ARROMANCHES. A second (exterior) staircase allows direct access to the floor without disturbing the privacy of the rooms on the ground floor. The fully fenced (great barrier on side street and gate on the sea side) with lawn, large planters and tree-lined with flowers, terraces and parking will allow you to enjoy a peaceful waterfront home. "

Assets

- Parking :
Parking uncovered : 5 off road.
- Advantages :
Pétanque pitch
- baby equipment :
Baby chair, baby bath, pushchair

Benefits :
Direct access to the beach

Surroundings & location



" ASNELLES (GOLD BEACH) is a small coastal village of 576 inhabitants (census 2011) between COURSEULLES (9km) and ARROMANCHES (3 km). Beautiful sandy beach in summer where you can, through the many clubs and associations of ASNELLES, get initiates in pelagic, nautical and maritime activities (sand-yachting, windsurfing, kitesurfing, catamaran, sea kayaking, sea excursions, visit of the historic hulks of ARROMANCHES, diving by the very very very many shipwrecks in the area.) You will be at the heart of the historical sites of the landing of June 6, 1944: the Museum and the ARROMANCHES 360° cinema are 3 km away. The impressive American cemetery with its 9387 graves overlooking OMAHA Beach (the bloody Omaha) is 24 km from ASNELLES. The region has many architectural sites to visit (MONT SAINT MICHEL to 120 km). "

Leisure

- Leisure activities less than 20 km / 12 miles :

Bathing, pedalo, snorkelling, scuba diving, banana boat, water skiing, jet ski, surfing, windsurfing, sailing, kite surfing, canoeing, golf, tennis, squash, riding school, pathway, mountain bike (path), sand yachting, Microlights, boat trips, horse trekking, mini-golf, rollerblade/rollerskate (circuit), skate board (ramps), go-karting, ten-pin bowling, deep-sea angling, angling, spear fishing

- Supervised :
Sailing school, riding school
- Attractions and relaxation :

Discotheque, restaurant, cinema, park and garden, leisure park, zoo/animal park, nature reserve, exhibition centre, museum, festivals, antiques & bric-a-brac, cellar and wine tasting, casino, natural spring baths, thalassotherapy centre, health farm

Surroundings

- Locality :
Ice skating rink 15.5mi.
Sea/ocean
Sandy beach
Nudist beach 0.3mi.
Public swimming pool 4.5mi.
Public tennis court 0.5mi.
18 hole golf course 12.5mi.
Surfing spots <165'
Watersports centre 660'
Marina 4.5mi.
Slipway <165'

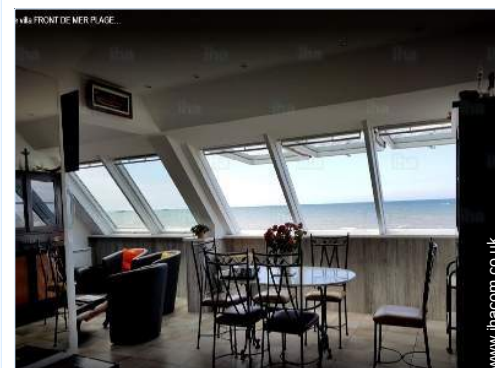
Jetski slipway <165'

• Amenities :

Village centre 0.62mi.
Bus stop / bus station 0.62mi.
Bike/mountain bike hire 0.62mi.
Scooter/motorbike hire 0.62mi.
Car rental 0.62mi.
Boat rental 0.62mi.
Scuba diving material hire 0.62mi.
Breadshop 0.62mi.
Local shops 0.62mi.
Supermarket 4.5mi.
Hairdressing salon 0.62mi.
Post office 0.62mi.
Cash point 1.25mi.
Chemist 3mi.
Doctor 0.62mi.
Nurse 0.62mi.
Hospital 15.5mi.



view from the dining-room



dining room



tv room

Interior

- **Receive up to :**
6 person(s)
- **Liveable floor area :**
860 Sq.ft.
- **Interior layout :**
5 Room(s), 3 bedroom(s), 2 shower room, 3 WC, living room, separate kitchen, dining room, cosy nook, mezzanine, tv room, reading room
- **Sleeps - bed(s) :**
2 double bed(s), 2 single bed(s), 1 baby cot (s)
- **Guest facilities :**
Fireplace, T.V., hi-fi system, videoplayer, DVD player, board games, book collection, t.v points, telephone, internet access, high speed internet access, wifi, wardrobe, cupboard, Hanging wardrobe, radio alarmclock, hair dryer, central heating, electric heating, Glazed in area, Skylights, Curtains, Blinds, Double glazed, Rolling shutters, fire alarm
- **Appliances :**
Crockery/cutlery, kitchen utensils, cafetiere, electric coffee maker, electric kettle, toaster, juicer, food processor, meat grill, gas cooker, oven, micro-wave oven, extractor hood, refridgerator, freezer, dish washer, washing machine, clothes dryer, vacuum cleaner, iron, ironing board

Exterior

- **Ground surface :**
4,300 Sq.ft.
- **Outside accommodation :**
Terrace 650 Sq.ft., balcony, garden shed
- **Outside setting :**
Private courtyard 3,300 Sq.ft., enclosed grounds, landscaped garden, lawn
- **Outside amenities :**
Summer living area, BBQ, garden table(s), 12 garden seat(s), trolley on wheels, parasol, garden seated area, 4 sun recliner(s), outside toilet facilities



Services

- **Washing :**
Sheets supplement (1 X / per week +£46*), Towels (1 X / per week), Linen (1 X / per week), Blanket(s), Quilt(s), Pillows
- **House :**
Cleaning on departure supplement (+£46*)

For your guidance

- **For your guidance**
Children welcome
Pets accepted under certain conditions (ask the owner)
Mobile telephone network coverage, personal transport advisable
Water : hot/cold
Local voltage supply : 220-240V / 50Hz
Electricity supply : mains



Photo album - 1



dining room



view from the dining-room



tv room



Photo album - 2



Photo album - 3



Location



Location & Access

" From PARIS: Motorway A13 to CAEN, 4 way up to COURSEULLES, 9 km via departmental road to ASNELLES, total 262 km. 80 km from the airport of DEAUVILLE. 13 km from the railway station of BAYEUX. 30 km from the maritime station of OUISTREHAM (ferry from Southampton). "



GPS coordinates in degrees, minutes, seconds: Latitude 49°20'36"N - Longitude 0°34'22"W ([Dwelling](#))

Address

→ 26, rue du Havre Heurtault
14960 Asnelles

• Motorway (junction) A13

→ Caen, Calvados, Lower Normandy,
France
→ Distance : 15.5mi.
→ Time : 30'

• Train station Bayeux

→ Bayeux, Calvados, Lower Normandy,
France
→ Time : 20'

- Arromanches-les-Bains : (3mi.)
- Bayeux : (9mi.)
- Caen : (20mi.)

Contact

Spoken
languages



Holiday lettings Calvados - Lower Normandy "Plage Normande"

Availability calendar - from : september 2019

| Sep | Su | M | Tu | W | Th | F | Sa | Su | M | Tu | W | Th | F | Sa | Su | M | Tu | W | Th | F | Sa | Su | M | | | | | | | |
|------|----|---|----|---|----|---|----|----|---|----|----|----|----|----|----|----|----|----|----|----|----|----|----|----|----|----|----|----|----|----|
| 2019 | 1 | 2 | 3 | 4 | 5 | 6 | 7 | 8 | 9 | 10 | 11 | 12 | 13 | 14 | 15 | 16 | 17 | 18 | 19 | 20 | 21 | 22 | 23 | 24 | 25 | 26 | 27 | 28 | 29 | 30 |
| | | | | | | | | | | | | | | | | | | | | | | | | | | | | | | |

| Oct | Tu | W | Th | F | Sa | Su | M | Tu | W | Th | F | Sa | Su | M | Tu | W | Th | F | Sa | Su | M | Tu | W | Th | F | Sa | Su | M | Tu | W | Th |
|------|----|---|----|---|----|----|---|----|---|----|----|----|----|----|----|----|----|----|----|----|----|----|----|----|----|----|----|----|----|----|----|
| 2019 | 1 | 2 | 3 | 4 | 5 | 6 | 7 | 8 | 9 | 10 | 11 | 12 | 13 | 14 | 15 | 16 | 17 | 18 | 19 | 20 | 21 | 22 | 23 | 24 | 25 | 26 | 27 | 28 | 29 | 30 | 31 |
| | - | - | - | - | - | - | - | - | - | - | - | - | - | - | - | - | - | - | - | - | - | - | - | - | - | - | - | - | - | - | - |

| Nov | F | Sa | Su | M | Tu | W | Th | F | Sa | Su | M | Tu | W | Th | F | Sa | Su | M | Tu | W | Th | F | Sa | | | | | | | |
|------|---|----|----|---|----|---|----|---|----|----|----|----|----|----|----|----|----|----|----|----|----|----|----|----|----|----|----|----|----|----|
| 2019 | 1 | 2 | 3 | 4 | 5 | 6 | 7 | 8 | 9 | 10 | 11 | 12 | 13 | 14 | 15 | 16 | 17 | 18 | 19 | 20 | 21 | 22 | 23 | 24 | 25 | 26 | 27 | 28 | 29 | 30 |
| | - | - | - | - | - | - | - | - | - | - | - | - | - | - | - | - | - | - | - | - | - | - | - | - | - | - | - | - | - | - |

| Dec | Su | M | Tu | W | Th | F | Sa | Su | M | Tu | W | Th | F | Sa | Su | M | Tu | W | Th | F | Sa | Su | M | Tu | | | | | | | |
|------|----|---|----|---|----|---|----|----|---|----|----|----|----|----|----|----|----|----|----|----|----|----|----|----|----|----|----|----|----|----|----|
| 2019 | 1 | 2 | 3 | 4 | 5 | 6 | 7 | 8 | 9 | 10 | 11 | 12 | 13 | 14 | 15 | 16 | 17 | 18 | 19 | 20 | 21 | 22 | 23 | 24 | 25 | 26 | 27 | 28 | 29 | 30 | 31 |
| | - | - | - | - | - | - | - | - | - | - | - | - | - | - | - | - | - | - | - | - | - | - | - | - | - | - | - | - | - | - | |

| Jan | W | Th | F | Sa | Su | M | Tu | W | Th | F | Sa | Su | M | Tu | W | Th | F | Sa | Su | M | Tu | W | Th | F | Sa | Su | M | Tu | W | Th | F |
|------|---|----|---|----|----|---|----|---|----|----|----|----|----|----|----|----|----|----|----|----|----|----|----|----|----|----|----|----|----|----|----|
| 2020 | 1 | 2 | 3 | 4 | 5 | 6 | 7 | 8 | 9 | 10 | 11 | 12 | 13 | 14 | 15 | 16 | 17 | 18 | 19 | 20 | 21 | 22 | 23 | 24 | 25 | 26 | 27 | 28 | 29 | 30 | 31 |
| | - | - | - | - | - | - | - | - | - | - | - | - | - | - | - | - | - | - | - | - | - | - | - | - | - | - | - | - | - | - | - |

| Feb | Sa | Su | M | Tu | W | Th | F | Sa | Su | M | Tu | W | Th | F | Sa | Su | M | Tu | W | Th | F | Sa | | | | | | | |
|------|----|----|---|----|---|----|---|----|----|----|----|----|----|----|----|----|----|----|----|----|----|----|----|----|----|----|----|----|----|
| 2020 | 1 | 2 | 3 | 4 | 5 | 6 | 7 | 8 | 9 | 10 | 11 | 12 | 13 | 14 | 15 | 16 | 17 | 18 | 19 | 20 | 21 | 22 | 23 | 24 | 25 | 26 | 27 | 28 | 29 |
| | - | - | - | - | - | - | - | - | - | - | - | - | - | - | - | - | - | - | - | - | - | - | - | - | - | - | - | - | - |

| Mar | Su | M | Tu | W | Th | F | Sa | Su | M | Tu | W | Th | F | Sa | Su | M | Tu | W | Th | F | Sa | Su | M | Tu | | | | | | | |
|------|----|---|----|---|----|---|----|----|---|----|----|----|----|----|----|----|----|----|----|----|----|----|----|----|----|----|----|----|----|----|----|
| 2020 | 1 | 2 | 3 | 4 | 5 | 6 | 7 | 8 | 9 | 10 | 11 | 12 | 13 | 14 | 15 | 16 | 17 | 18 | 19 | 20 | 21 | 22 | 23 | 24 | 25 | 26 | 27 | 28 | 29 | 30 | 31 |
| | - | - | - | - | - | - | - | - | - | - | - | - | - | - | - | - | - | - | - | - | - | - | - | - | - | - | - | - | - | - | |

| Apr | W | Th | F | Sa | Su | M | Tu | W | Th | F | Sa | Su | M | Tu | W | Th | F | Sa | Su | M | Tu | W | Th | F | Sa | Su | M | Tu | W | Th |
|------|---|----|---|----|----|---|----|---|----|----|----|----|----|----|----|----|----|----|----|----|----|----|----|----|----|----|----|----|----|----|
| 2020 | 1 | 2 | 3 | 4 | 5 | 6 | 7 | 8 | 9 | 10 | 11 | 12 | 13 | 14 | 15 | 16 | 17 | 18 | 19 | 20 | 21 | 22 | 23 | 24 | 25 | 26 | 27 | 28 | 29 | 30 |
| | - | - | - | - | - | - | - | - | - | - | - | - | - | - | - | - | - | - | - | - | - | - | - | - | - | - | - | - | - | - |

| May | F | Sa | Su | M | Tu | W | Th | F | Sa | Su | M | Tu | W | Th | F | Sa | Su | M | Tu | W | Th | F | Sa | Su | | | | | | | |
|------|---|----|----|---|----|---|----|---|----|----|----|----|----|----|----|----|----|----|----|----|----|----|----|----|----|----|----|----|----|----|----|
| 2020 | 1 | 2 | 3 | 4 | 5 | 6 | 7 | 8 | 9 | 10 | 11 | 12 | 13 | 14 | 15 | 16 | 17 | 18 | 19 | 20 | 21 | 22 | 23 | 24 | 25 | 26 | 27 | 28 | 29 | 30 | 31 |
| | - | - | - | - | - | - | - | - | - | - | - | - | - | - | - | - | - | - | - | - | - | - | - | - | - | - | - | - | - | - | |

| June | M | Tu | W | Th | F | Sa | Su | M | Tu | W | Th | F | Sa | Su | M | Tu | W | Th | F | Sa | Su | M | Tu | | | | | | | |
|------|---|----|---|----|---|----|----|---|----|----|----|----|----|----|----|----|----|----|----|----|----|----|----|----|----|----|----|----|----|----|
| 2020 | 1 | 2 | 3 | 4 | 5 | 6 | 7 | 8 | 9 | 10 | 11 | 12 | 13 | 14 | 15 | 16 | 17 | 18 | 19 | 20 | 21 | 22 | 23 | 24 | 25 | 26 | 27 | 28 | 29 | 30 |
| | - | - | - | - | - | - | - | - | - | - | - | - | - | - | - | - | - | - | - | - | - | - | - | - | - | - | - | - | - | - |

Reserved

Holiday lettings Asnelles - France "Plage Normande"

9

[Book now](#)

Availability calendar - from : june 2020




| Jul | W | Th | F | Sa | Su | M | Tu | W | Th | F | Sa | Su | M | Tu | W | Th | F | Sa | Su | M | Tu | W | Th | F | | | | | | | |
|------|---|----|---|----|----|---|----|---|----|----|----|----|----|----|----|----|----|----|----|----|----|----|----|----|----|----|----|----|----|----|----|
| 2020 | 1 | 2 | 3 | 4 | 5 | 6 | 7 | 8 | 9 | 10 | 11 | 12 | 13 | 14 | 15 | 16 | 17 | 18 | 19 | 20 | 21 | 22 | 23 | 24 | 25 | 26 | 27 | 28 | 29 | 30 | 31 |
| | - | - | - | - | - | - | - | - | - | - | - | - | - | - | - | - | - | - | - | - | - | - | - | - | - | - | - | - | - | - | |

| Aug | Sa | Su | M | Tu | W | Th | F | Sa | Su | M | Tu | W | Th | F | Sa | Su | M | Tu | W | Th | F | Sa | Su | M | | | | | | | |
|------|----|----|---|----|---|----|---|----|----|----|----|----|----|----|----|----|----|----|----|----|----|----|----|----|----|----|----|----|----|----|----|
| 2020 | 1 | 2 | 3 | 4 | 5 | 6 | 7 | 8 | 9 | 10 | 11 | 12 | 13 | 14 | 15 | 16 | 17 | 18 | 19 | 20 | 21 | 22 | 23 | 24 | 25 | 26 | 27 | 28 | 29 | 30 | 31 |
| | - | - | - | - | - | - | - | - | - | - | - | - | - | - | - | - | - | - | - | - | - | - | - | - | - | - | - | - | - | - | |

 Reserved

[Month : Next >>](#)

Rental rates - Villa - 6 Person(s)

| Rates | Night | Weekend | week | 2 weeks | Month |
|---|-------|---------|---------------------|---------|-------|
|  Low season | - | - | £555* (Saturday) | - | - |
|  Mid season | - | - | £696* (Saturday) | - | - |
|  High season | - | - | £983* (Saturday) | - | - |

(Check-in day)

[Book now](#)

Booking conditions

• Reservation

- Payment made upon reservation : 25% of rental sum
- Payment balance : on handing over the keys
- Deposit required : £273*

• rentals

- Service charges included
- Day tax included
- Cleaning charge levy on departure : £46*

[▶ Book now](#)

[▶ Contact the owner](#)

Accepted methods of payment

- International Money Order
- Bank transfer (wire)
- Cheque
- Cash

Contact directly the property owners

www.ihacom.co.uk

Advert No.

890

[>> Book now <<](#)

Contact

Spoken languages



* Converted at the rate indicated : €100 = \$110 = £91

Advert No. 890

www.ihacom.co.uk



[>> HOLIDAY LETTINGS](#)

[BOOK DIRECT WITH THE OWNERS](#)