

Holiday lettings Antibes Flat-Apartments

Newly refurbished 1 bedroom apartment with balcony in the centre of Antibes, just a short walk from the beach and the old town.



Flat-Apartments 3rd floor in a(an)
Apartment block 5 floors

Setting : seaside, historical

Capacity : from 1 to 4 person(s)

Bedroom(s) : 1

Room(s) : 2

Antibes - Alpes Maritimes - French Riviera (06) - Provence-Alpes-Côte d'Azur (French Riviera)

France

Reservation : +33 (0) 553893508 (France)

Advert No. 6213

www.ihacom.co.uk



>> HOLIDAY LETTINGS

BOOK DIRECT WITH THE OWNERS

Holiday lettings



Flat-Apartments 3rd floor in a(an) Apartment block 5 floors

- **Ideal for all age groups**
- **View :** sea/ocean, town, street/avenue
- **Setting :** seaside, historical

"The apartment has a small double bedroom which has access to the balcony. The balcony has seating for 4 and a sunlounger. If you look to the left, you can just see the sea, and look to the right you can see the mountains. The air-conditioned lounge has a new style sofa bed with thick mattress and wall mounted TV. At the far end you will find a fully fitted kitchen with washing machine, dishwasher, electric oven & hob. Wi-Fi. There is a walk in shower and separate WC."

Surroundings & location



Seaside



Culture

"The Mediterranean is 5 minutes away as is the old town and markets. You can walk easily to all attractions, bars and restaurants. Juan les Pins is only 15 mins walk. Antibes was a Greek fortified town named Antipolis in the 5th century BC, and later a Roman town. It has always been an active port for trading along the Mediterranean. The natural beauty is in the old town (vielle ville), with the ramparts along the sea and the long, arched protective wall along the port. There are plenty of little streets for exploring, restaurants of all types, lots of shops from authentic handicraft stores to the well-known fashion stores."

Leisure

- **Leisure activities less than 20 km / 12 miles :**

Bathing, snorkelling, scuba diving, banana boat, water skiing, jet ski, windsurfing, boat trips, fishing, pétanque pitch

- **Attractions and relaxation :**

Bar/pub, discotheque, restaurant, park and garden, leisure park, art gallery, historical site, museum, casino

Surroundings

- **Locality :**

Sea/ocean 660'
 Sandy beach 660'
 Windsurfing spots 0.3mi.
 Marina 2.5mi.

- **Amenities :**

Village centre 0.3mi.
 Bus stop / bus station 0.3mi.
 Scooter/motorbike hire 0.3mi.
 Car rental 0.3mi.
 Breadshop 660'
 Local shops 660'
 Supermarket 660'
 High class retailers 0.3mi.
 Internet cafe 0.3mi.
 Bank 0.3mi.
 Cash point 0.3mi.
 Chemist 0.3mi.
 Doctor 0.3mi.



bedroom



the flat



sofa bed(s) 2 pers

Advert No. 6213

www.ihacom.co.uk





electric cooker

Interior

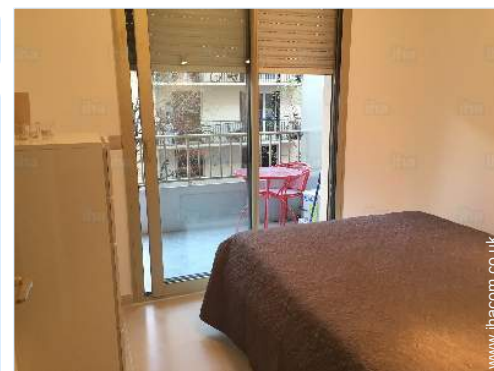
- **Receive up to :**
from 1 to 4 person(s) (4 adults)
- **Liveable floor area :**
380 Sq.ft.
- **Interior layout :**
2 Room(s), 1 bedroom(s), sleeping area, 1 shower room, 1 WC, living room 215 Sq.ft., american style kitchen, dining area, patio
- **Sleeps - bed(s) :**
1 double bed(s), 1 sofa bed(s) 2 pers
- **Guest facilities :**
Lift, T.V., wifi, wardrobe, Hanging wardrobe, partly air conditioned, central heating, Rolling shutters, electric shutters
- **Appliances :**
Crockery/cutlery, kitchen utensils, cafetiere, electric kettle, toaster, electric cooker, electric hobs, oven, micro-wave oven, extractor hood, refridgerator, dish washer, washing machine, vacuum cleaner, iron, ironing board



Kitchen Area

Exterior

- **Outside accommodation :**
Balcony 110 Sq.ft.
- **Outside amenities :**
Garden table(s), 4 garden seat(s), 1 sun recliner(s)



view from the bedroom

Services

- **Washing :**
Sheets, Towels, Linen, Beach towels, Blanket(s), Quilt(s), Pillows
- **House :**
Cleaning on departure supplement (+£50)

For your guidance

- **For your guidance**
No children under 2 years old
No pet allowed
Mobile telephone network coverage
Water : hot/cold
Electricity supply : mains

Photo album - 1



the flat



sofa bed(s) 2 pers



bedroom

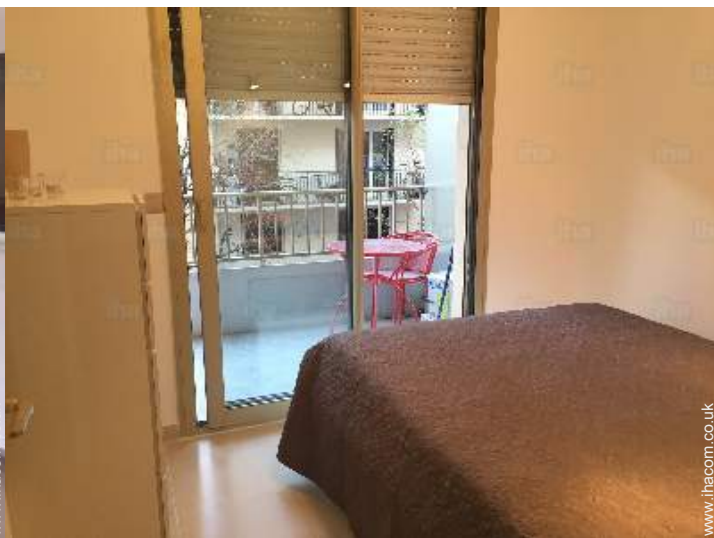


electric cooker

Photo album - 2



Kitchen Area



view from the bedroom



shower room



sandy beach



Seaside



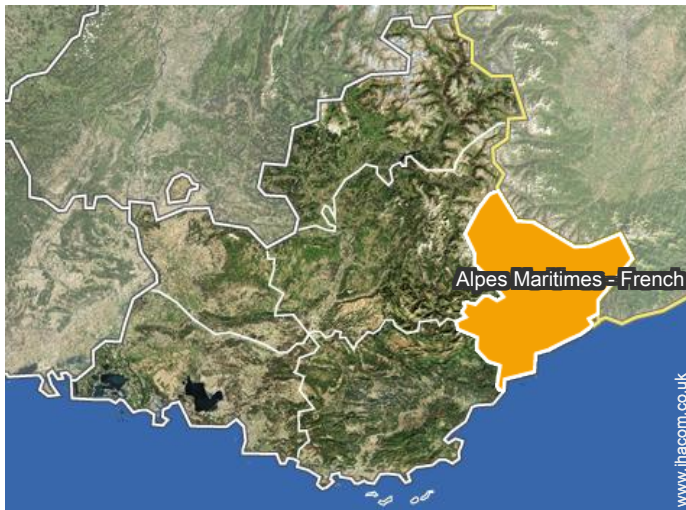
block of flats

Holiday lettings
Provence-Alpes-Côte d'Azur (French Riviera) - France
Flat-Apartments

6

[Book now](#)

Location



Location & Access

" Public transport (bus stops and Antibes railway station) which can take you to from St-Tropez to Monaco is within walking distance. Nice is the closest airport (17km). "



GPS coordinates in degrees, minutes, seconds: Latitude 43°34'40"N - Longitude 7°7'20"E ([Dwelling](#))

Address

→ 29 Boulevard du Marechal Foch
06600 Antibes

• [Airport Nice Côte d'Azur](#)

→ Nice, Alpes Maritimes - French Riviera,
Provence-Alpes-Côte d'Azur (French
Riviera), France

→ Distance : 9mi.

→ Time : 30'

- Nice : (9mi.)
- Cannes : (6mi.)

Contact

Spoken
languages



Advert No. 6213

www.ihacom.co.uk



>> HOLIDAY LETTINGS

BOOK DIRECT WITH THE OWNERS

Holiday lettings Antibes - France Flat-Apartments

7
[Book now](#)

Availability calendar - from : february 2018

Feb	Th	F	Sa	Su	M	Tu	W	Th	F	Sa	Su	M	Tu	W	Th	F	Sa	Su	M	Tu	W	Th	F	Sa	Su	M	Tu	W
2018	1	2	3	4	5	6	7	8	9	10	11	12	13	14	15	16	17	18	19	20	21	22	23	24	25	26	27	28

Mar	Th	F	Sa	Su	M	Tu	W	Th	F	Sa	Su	M	Tu	W	Th	F	Sa	Su	M	Tu	W	Th	F	Sa	Su	M	Tu	W	Th	F	Sa
2018	1	2	3	4	5	6	7	8	9	10	11	12	13	14	15	16	17	18	19	20	21	22	23	24	25	26	27	28	29	30	31
	-	-	-	-	-	-	-	-	-	-	-	-	-	-	-	-	-	-	-	-	-	-	-	-	-	-	-	-	-	-	-

Apr	Su	M	Tu	W	Th	F	Sa	Su	M	Tu	W	Th	F	Sa	Su	M	Tu	W	Th	F	Sa	Su	M	Tu	W	Th	F	Sa	Su	M
2018	1	2	3	4	5	6	7	8	9	10	11	12	13	14	15	16	17	18	19	20	21	22	23	24	25	26	27	28	29	30
	-	-	-	-	-	-	-	-	-	-	-	-	-	-	-	-	-	-	-	-	-	-	-	-	-	-	-	-	-	-

May	Tu	W	Th	F	Sa	Su	M	Tu	W	Th	F	Sa	Su	M	Tu	W	Th	F	Sa	Su	M	Tu	W	Th	F	Sa	Su	M	Tu	W	Th
2018	1	2	3	4	5	6	7	8	9	10	11	12	13	14	15	16	17	18	19	20	21	22	23	24	25	26	27	28	29	30	31
	-	-	-	-	-	-	-	-	-	-	-	-	-	-	-	-	-	-	-	-	-	-	-	-	-	-	-	-	-	-	-

June	F	Sa	Su	M	Tu	W	Th	F	Sa	Su	M	Tu	W	Th	F	Sa	Su	M	Tu	W	Th	F	Sa							
2018	1	2	3	4	5	6	7	8	9	10	11	12	13	14	15	16	17	18	19	20	21	22	23	24	25	26	27	28	29	30
	-	-	-	-	-	-	-	-	-	-	-	-	-	-	-	-	-	-	-	-	-	-	-	-	-	-	-	-	-	-

Jul	Su	M	Tu	W	Th	F	Sa	Su	M	Tu	W	Th	F	Sa	Su	M	Tu	W	Th	F	Sa	Su	M	Tu	W	Th	F	Sa	Su	M	Tu
2018	1	2	3	4	5	6	7	8	9	10	11	12	13	14	15	16	17	18	19	20	21	22	23	24	25	26	27	28	29	30	31
	-	-	-	-	-	-	-	-	-	-	-	-	-	-	-	-	-	-	-	-	-	-	-	-	-	-	-	-	-	-	-

Aug	W	Th	F	Sa	Su	M	Tu	W	Th	F	Sa	Su	M	Tu	W	Th	F	Sa	Su	M	Tu	W	Th	F	Sa	Su	M	Tu	W	Th	F
2018	1	2	3	4	5	6	7	8	9	10	11	12	13	14	15	16	17	18	19	20	21	22	23	24	25	26	27	28	29	30	31
	-	-	-	-	-	-	-	-	-	-	-	-	-	-	-	-	-	-	-	-	-	-	-	-	-	-	-	-	-	-	-

Sep	Sa	Su	M	Tu	W	Th	F	Sa	Su	M	Tu	W	Th	F	Sa	Su	M	Tu	W	Th	F	Sa	Su							
2018	1	2	3	4	5	6	7	8	9	10	11	12	13	14	15	16	17	18	19	20	21	22	23	24	25	26	27	28	29	30
	-	-	-	-	-	-	-	-	-	-	-	-	-	-	-	-	-	-	-	-	-	-	-	-	-	-	-	-	-	-

Oct	M	Tu	W	Th	F	Sa	Su	M	Tu	W	Th	F	Sa	Su	M	Tu	W	Th	F	Sa	Su	M	Tu	W							
2018	1	2	3	4	5	6	7	8	9	10	11	12	13	14	15	16	17	18	19	20	21	22	23	24	25	26	27	28	29	30	31
	-	-	-	-	-	-	-	-	-	-	-	-	-	-	-	-	-	-	-	-	-	-	-	-	-	-	-	-	-	-	

Nov	Th	F	Sa	Su	M	Tu	W	Th	F	Sa	Su	M	Tu	W	Th	F	Sa	Su	M	Tu	W	Th	F							
2018	1	2	3	4	5	6	7	8	9	10	11	12	13	14	15	16	17	18	19	20	21	22	23	24	25	26	27	28	29	30
	-	-	-	-	-	-	-	-	-	-	-	-	-	-	-	-	-	-	-	-	-	-	-	-	-	-	-	-	-	-

■ Low season
 ■ Mid season
 ■ High season



Availability calendar - from : november 2018

Dec	Sa	Su	M	Tu	W	Th	F	Sa	Su	M	Tu	W	Th	F	Sa	Su	M	Tu	W	Th	F	Sa	Su	M							
2018	1	2	3	4	5	6	7	8	9	10	11	12	13	14	15	16	17	18	19	20	21	22	23	24	25	26	27	28	29	30	31
-	-	-	-	-	-	-	-	-	-	-	-	-	-	-	-	-	-	-	-	-	-	-	-	-	-	-	-	-	-	-	

Jan	Tu	W	Th	F	Sa	Su	M	Tu	W	Th	F	Sa	Su	M	Tu	W	Th	F	Sa	Su	M	Tu	W	Th							
2019	1	2	3	4	5	6	7	8	9	10	11	12	13	14	15	16	17	18	19	20	21	22	23	24	25	26	27	28	29	30	31
-	-	-	-	-	-	-	-	-	-	-	-	-	-	-	-	-	-	-	-	-	-	-	-	-	-	-	-	-	-	-	

■ Low season
 ■ Mid season
 ■ High season

[Month : Next >>](#)

Rental rates - Flat-Apartments - from 1 to 4 Person(s)

Rates	Night	Weekend	week	2 weeks	Month
■ Low season	-	-	£450	£800	-
■ Mid season	-	-	£495	£900	-
■ High season	-	-	£750	£1400	-

[Book now](#)

Booking conditions

- **Reservation**
 - Payment made upon reservation : 20% of rental sum
 - Payment balance : 1 month before the stay
 - Deposit required : £200
- **rentals**
 - Day tax included
 - Cleaning charge levy on departure : £30

[▶ Book now](#)

[▶ Contact the owner](#)

Accepted methods of payment

- Bank transfer (wire) • PayPal

Contact directly the property owners

www.ihacom.co.uk
Advert No.
6213
>> Book now <<

Contact

Spoken languages

