

Holiday lettings Aldeia de Ronquenho "Monte da Madeira"

Are you a true nature lover? Then this beautiful, modern villa the ideal holiday destination for you.



House, detached, single storey, separate entrance, in a(an) Private property

Setting : bucolic, tranquil

Capacity : from 1 to 6 person(s)

Bedroom(s) : 3

Room(s) : 2

Aldeia de Ronquenho - District of Beja - Alentejo

Portugal

Advert No. 74596

www.ihacom.co.uk



Holiday lettings



House, detached, single storey, separate entrance, in a(an) Private property

• Ideal for all age groups

• View : panoramic, unobscured, country side, swimming pool, meadow, fantastic sunset

• Setting : bucolic, tranquil

• Exposure : North-west

" There's a generous furnished living room with dining area and living room. There is satellite TV (with international channels) and DVD. Wi-Fi internet for free use. The large windows offer you a sweeping look at the West, you have unobstructed views of beautiful olive trees. On winter evenings the floor heating and salamandra (wood stove) give a pleasant warmth. There is also a high chair, there are games, books and hiking trails. "

Assets

• Swimming pool :

Private swimming-pool, rectangular (length 33', width 16'), illuminated, steps in

• Parking :

Parking uncovered : 2 off road.

• baby equipment :

Baby chair

Surroundings & location



Countryside

" Many small and charming villages in the vicinity where you always find a church but also a cosy café. And you can speak with the old men who sit on a bench. So you hear a lot about the Portuguese life. You can also visit Lisbon and enjoy all kinds of museums, but also the many terraces. "

Leisure

• Leisure activities less than 20 km / 12 miles :

Bathing, tennis, pathway, hiking, kite flying

• Attractions and relaxation :

Bar/pub, discotheque, restaurant, cinema, park and garden, museum, festivals, local craftshop, health farm

Surroundings

• Locality :

Sea/ocean >31mi.
Sandy beach >31mi.
Rocky beach >31mi.
Nudist beach >31mi.
Public swimming pool 6mi.
Public tennis court 6mi.
Lake 9mi.
Forest 25mi.

• Amenities :

Village centre 1.25mi.
Town centre 6mi.
Bus stop / bus station 1.25mi.
Breadshop 1.25mi.
Local shops 1.25mi.
Supermarket 6mi.
High class retailers 25mi.
Hairdressing salon 6mi.
Internet cafe 6mi.
Post office 6mi.
Bank 6mi.
Cash point 6mi.
Chemist 6mi.
Doctor 6mi.
Hospital 25mi.



Interior layout and facilities



Interior layout and facilities



Interior layout and facilities

Interior

- **Receive up to :**
from 1 to 6 person(s) (6 adults)
- **Liveable floor area :**
1,600 Sq.ft.
- **Interior layout :**
2 Room(s), 3 bedroom(s), 1 bathroom, 2 shower room, 3 WC, living room 430 Sq.ft., large american style kitchen, dining area, laundry room, veranda
- **Sleeps - bed(s) :**
6 single bed(s)
- **Guest facilities :**
T.V., DVD player, board games, book collection, cable/satelite, internet access, wifi, Hanging wardrobe, hair dryer, fly screens, electric heating, wood-burning stove, Curtains, Double glazed, remote controlled gates
- **Appliances :**
Crockery/cutlery, kitchen utensils, cafetiere, electric kettle, juicer, electric raclette set, gas cooker, oven, extractor hood, refridgerator, freezer, dish washer, washing machine, vacuum cleaner, iron, ironing board

Exterior

- **Ground surface :**
7.5 acres
- **Outside accommodation :**
Terrace 215 Sq.ft., covered terrace 323 Sq.ft., sundeck 1,076 Sq.ft.
- **Outside setting :**
Enclosed grounds 7.5 acres, garden 1,076 Sq.ft., lawn 3,300 Sq.ft., olive grove 2.5 acres, river
- **Outside amenities :**
BBQ, garden table(s), 6 garden seat(s), trolley on wheels, 4 chaise(s) longue(s)



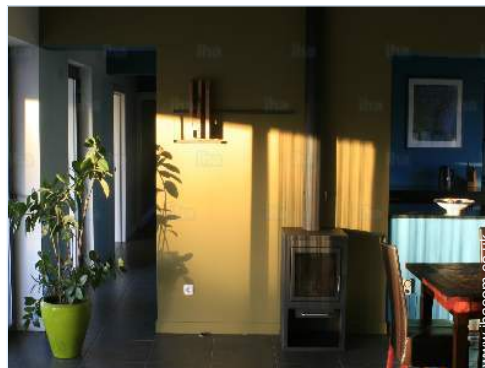
bathroom

Services

- **Washing :**
Towels, Linen, Quilt(s), Pillows
- **House :**
Cleaning on departure, Garden/swimming pool maintenance (2 X / per week), Parking, Airport transfers supplement (+£71*)
- **Restauration :**
Breakfast supplement (+£6*), Guest table supplement (3 X / per week +£18*), Locally produced meals supplement (1 X / per week +£13*), Picnic basket supplement (+£11*), Themed evening supplement (+£11*)

For your guidance

- **For your guidance**
Children welcome
Pets accepted under certain conditions (ask the owner)
Non smoking rental, mobile telephone network coverage, personal transport advisable
Water : hot/cold, water not drinkable
Local voltage supply : 220-240V / 50Hz
Electricity supply : mains
- **Handicapped people welcome**
Wheelchair access
Fitted out for the disabled : mobility



Interior layout and facilities

Photo album - 1



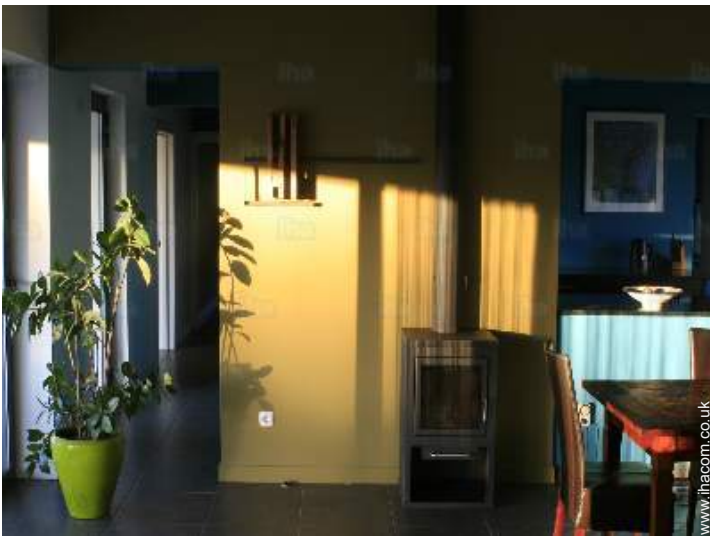
Interior layout and facilities



Interior layout and facilities



Interior layout and facilities



Interior layout and facilities



bathroom

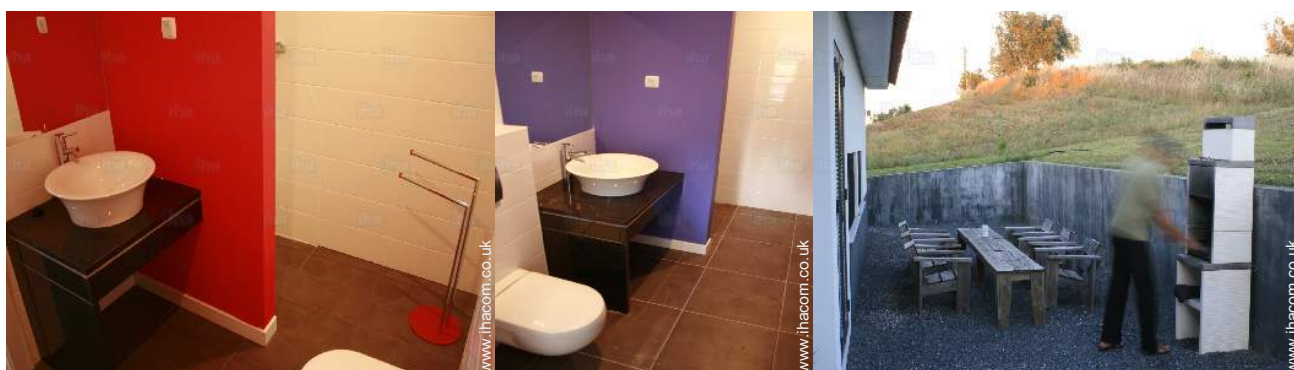
Photo album - 2



bathroom

shower room

bedroom



shower room

shower room

outside



pool view

westerly view

view from the covered terrace



view from the covered terrace

Photo album - 3



view from the bedroom



Interior layout and facilities



Interior layout and facilities



Interior layout and facilities



Interior layout and facilities



view over the countryside



covered terrace



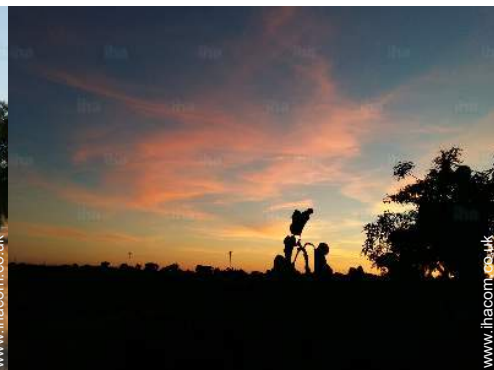
outside



the house

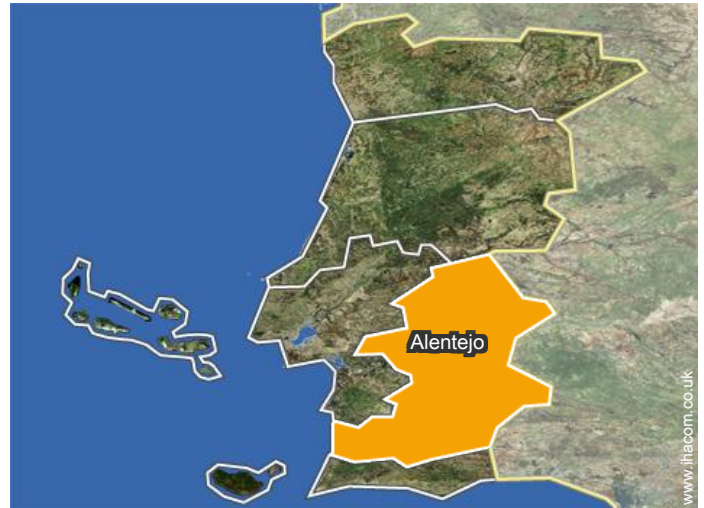
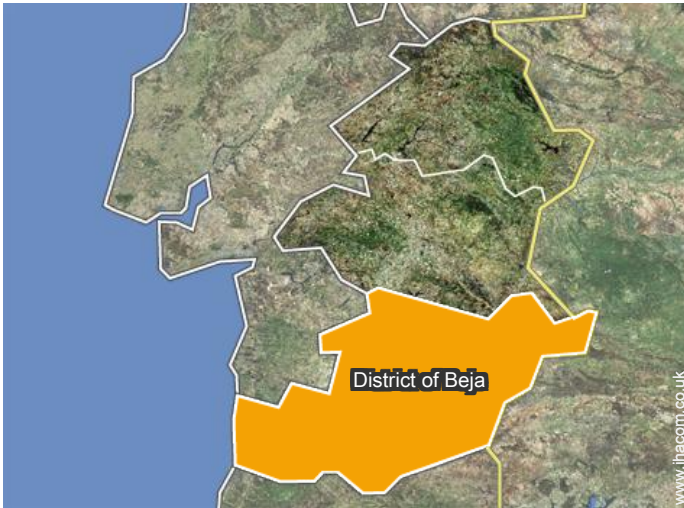


Countryside



view of the sunset

Location



Location & Access

" Located near the small village of Aldeia do Rouquenho and just 10 minutes from Ferreira do Alentejo where you can go shopping. "



GPS coordinates in degrees, minutes, seconds: Latitude 38°0'20"N - Longitude 8°13'8"W (Dwelling)

Address

→ Caixa Postal 77
7900 Aldeia de Ronquenho

• Airport Faro

→ Faro, Algarve, Portugal
→ Distance : 92mi.
→ Time : 1h30'

• Motorway (junction) A2

→ Canhestros, District of Beja, Alentejo, Portugal
→ Time : 20'

- Ferreira do Alentejo : (7,5mi.)
- Beja : (25mi.)

Contact

Spoken languages



Holiday lettings District of Beja - Alentejo "Monte da Madeira"

Availability calendar - from : march 2019

| Mar | F | Sa | Su | M | Tu | W | Th | F | Sa | Su | M | Tu | W | Th | F | Sa | Su | M | Tu | W | Th | F | Sa | Su | | | | | | | |
|------|---|----|----|---|----|---|----|---|----|----|----|----|----|----|----|----|----|----|----|----|----|----|----|----|----|----|----|----|----|----|----|
| 2019 | 1 | 2 | 3 | 4 | 5 | 6 | 7 | 8 | 9 | 10 | 11 | 12 | 13 | 14 | 15 | 16 | 17 | 18 | 19 | 20 | 21 | 22 | 23 | 24 | 25 | 26 | 27 | 28 | 29 | 30 | 31 |
| | | | | | | | | | | | | | | | | | | | | | | | | | | | | | | | |

| Apr | M | Tu | W | Th | F | Sa | Su | M | Tu | W | Th | F | Sa | Su | M | Tu | W | Th | F | Sa | Su | M | Tu | | | | | | | |
|------|---|----|---|----|---|----|----|---|----|----|----|----|----|----|----|----|----|----|----|----|----|----|----|----|----|----|----|----|----|----|
| 2019 | 1 | 2 | 3 | 4 | 5 | 6 | 7 | 8 | 9 | 10 | 11 | 12 | 13 | 14 | 15 | 16 | 17 | 18 | 19 | 20 | 21 | 22 | 23 | 24 | 25 | 26 | 27 | 28 | 29 | 30 |
| | - | - | - | - | - | - | - | - | - | - | - | - | - | - | - | - | - | - | - | - | - | - | - | - | - | - | - | - | - | - |

| May | W | Th | F | Sa | Su | M | Tu | W | Th | F | Sa | Su | M | Tu | W | Th | F | Sa | Su | M | Tu | W | Th | F | | | | | | | |
|------|---|----|---|----|----|---|----|---|----|----|----|----|----|----|----|----|----|----|----|----|----|----|----|----|----|----|----|----|----|----|----|
| 2019 | 1 | 2 | 3 | 4 | 5 | 6 | 7 | 8 | 9 | 10 | 11 | 12 | 13 | 14 | 15 | 16 | 17 | 18 | 19 | 20 | 21 | 22 | 23 | 24 | 25 | 26 | 27 | 28 | 29 | 30 | 31 |
| | - | - | - | - | - | - | - | - | - | - | - | - | - | - | - | - | - | - | - | - | - | - | - | - | - | - | - | - | - | - | |

| June | Sa | Su | M | Tu | W | Th | F | Sa | Su | M | Tu | W | Th | F | Sa | Su | M | Tu | W | Th | F | Sa | Su | | | | | | | |
|------|----|----|---|----|---|----|---|----|----|----|----|----|----|----|----|----|----|----|----|----|----|----|----|----|----|----|----|----|----|----|
| 2019 | 1 | 2 | 3 | 4 | 5 | 6 | 7 | 8 | 9 | 10 | 11 | 12 | 13 | 14 | 15 | 16 | 17 | 18 | 19 | 20 | 21 | 22 | 23 | 24 | 25 | 26 | 27 | 28 | 29 | 30 |
| | - | - | - | - | - | - | - | - | - | - | - | - | - | - | - | - | - | - | - | - | - | - | - | - | - | - | - | - | - | - |

| Jul | M | Tu | W | Th | F | Sa | Su | M | Tu | W | Th | F | Sa | Su | M | Tu | W | Th | F | Sa | Su | M | Tu | W | | | | | | | |
|------|---|----|---|----|---|----|----|---|----|----|----|----|----|----|----|----|----|----|----|----|----|----|----|----|----|----|----|----|----|----|----|
| 2019 | 1 | 2 | 3 | 4 | 5 | 6 | 7 | 8 | 9 | 10 | 11 | 12 | 13 | 14 | 15 | 16 | 17 | 18 | 19 | 20 | 21 | 22 | 23 | 24 | 25 | 26 | 27 | 28 | 29 | 30 | 31 |
| | - | - | - | - | - | - | - | - | - | - | - | - | - | - | - | - | - | - | - | - | - | - | - | - | - | - | - | - | - | - | |

| Aug | Th | F | Sa | Su | M | Tu | W | Th | F | Sa | Su | M | Tu | W | Th | F | Sa | Su | M | Tu | W | Th | F | Sa | | | | | | | |
|------|----|---|----|----|---|----|---|----|---|----|----|----|----|----|----|----|----|----|----|----|----|----|----|----|----|----|----|----|----|----|----|
| 2019 | 1 | 2 | 3 | 4 | 5 | 6 | 7 | 8 | 9 | 10 | 11 | 12 | 13 | 14 | 15 | 16 | 17 | 18 | 19 | 20 | 21 | 22 | 23 | 24 | 25 | 26 | 27 | 28 | 29 | 30 | 31 |
| | - | - | - | - | - | - | - | - | - | - | - | - | - | - | - | - | - | - | - | - | - | - | - | - | - | - | - | - | - | - | |

| Sep | Su | M | Tu | W | Th | F | Sa | Su | M | Tu | W | Th | F | Sa | Su | M | Tu | W | Th | F | Sa | Su | M | | | | | | | |
|------|----|---|----|---|----|---|----|----|---|----|----|----|----|----|----|----|----|----|----|----|----|----|----|----|----|----|----|----|----|----|
| 2019 | 1 | 2 | 3 | 4 | 5 | 6 | 7 | 8 | 9 | 10 | 11 | 12 | 13 | 14 | 15 | 16 | 17 | 18 | 19 | 20 | 21 | 22 | 23 | 24 | 25 | 26 | 27 | 28 | 29 | 30 |
| | - | - | - | - | - | - | - | - | - | - | - | - | - | - | - | - | - | - | - | - | - | - | - | - | - | - | - | - | - | - |

| Oct | Tu | W | Th | F | Sa | Su | M | Tu | W | Th | F | Sa | Su | M | Tu | W | Th | F | Sa | Su | M | Tu | W | Th | | | | | | | |
|------|----|---|----|---|----|----|---|----|---|----|----|----|----|----|----|----|----|----|----|----|----|----|----|----|----|----|----|----|----|----|----|
| 2019 | 1 | 2 | 3 | 4 | 5 | 6 | 7 | 8 | 9 | 10 | 11 | 12 | 13 | 14 | 15 | 16 | 17 | 18 | 19 | 20 | 21 | 22 | 23 | 24 | 25 | 26 | 27 | 28 | 29 | 30 | 31 |
| | - | - | - | - | - | - | - | - | - | - | - | - | - | - | - | - | - | - | - | - | - | - | - | - | - | - | - | - | - | - | |

| Nov | F | Sa | Su | M | Tu | W | Th | F | Sa | Su | M | Tu | W | Th | F | Sa | Su | M | Tu | W | Th | F | Sa | | | | | | | |
|------|---|----|----|---|----|---|----|---|----|----|----|----|----|----|----|----|----|----|----|----|----|----|----|----|----|----|----|----|----|----|
| 2019 | 1 | 2 | 3 | 4 | 5 | 6 | 7 | 8 | 9 | 10 | 11 | 12 | 13 | 14 | 15 | 16 | 17 | 18 | 19 | 20 | 21 | 22 | 23 | 24 | 25 | 26 | 27 | 28 | 29 | 30 |
| | - | - | - | - | - | - | - | - | - | - | - | - | - | - | - | - | - | - | - | - | - | - | - | - | - | - | - | - | - | - |

| Dec | Su | M | Tu | W | Th | F | Sa | Su | M | Tu | W | Th | F | Sa | Su | M | Tu | W | Th | F | Sa | Su | M | Tu | | | | | | | |
|------|----|---|----|---|----|---|----|----|---|----|----|----|----|----|----|----|----|----|----|----|----|----|----|----|----|----|----|----|----|----|----|
| 2019 | 1 | 2 | 3 | 4 | 5 | 6 | 7 | 8 | 9 | 10 | 11 | 12 | 13 | 14 | 15 | 16 | 17 | 18 | 19 | 20 | 21 | 22 | 23 | 24 | 25 | 26 | 27 | 28 | 29 | 30 | 31 |
| | - | - | - | - | - | - | - | - | - | - | - | - | - | - | - | - | - | - | - | - | - | - | - | - | - | - | - | - | - | - | |

Low season

Holiday lettings
Aldeia de Ronquenho - Portugal
"Monte da Madeira"


9

[Book now](#)

Availability calendar - from : december 2019


| Jan | W | Th | F | Sa | Su | M | Tu | W | Th | F | Sa | Su | M | Tu | W | Th | F | Sa | Su | M | Tu | W | Th | F | Sa | Su | M | Tu | W | Th | F |
|------|---|----|---|----|----|---|----|---|----|----|----|----|----|----|----|----|----|----|----|----|----|----|----|----|----|----|----|----|----|----|----|
| 2020 | 1 | 2 | 3 | 4 | 5 | 6 | 7 | 8 | 9 | 10 | 11 | 12 | 13 | 14 | 15 | 16 | 17 | 18 | 19 | 20 | 21 | 22 | 23 | 24 | 25 | 26 | 27 | 28 | 29 | 30 | 31 |
| - | - | - | - | - | - | - | - | - | - | - | - | - | - | - | - | - | - | - | - | - | - | - | - | - | - | - | - | - | - | - | - |

| Feb | Sa | Su | M | Tu | W | Th | F | Sa | Su | M | Tu | W | Th | F | Sa | Su | M | Tu | W | Th | F | Sa | | | | | | | |
|------|----|----|---|----|---|----|---|----|----|----|----|----|----|----|----|----|----|----|----|----|----|----|----|----|----|----|----|----|----|
| 2020 | 1 | 2 | 3 | 4 | 5 | 6 | 7 | 8 | 9 | 10 | 11 | 12 | 13 | 14 | 15 | 16 | 17 | 18 | 19 | 20 | 21 | 22 | 23 | 24 | 25 | 26 | 27 | 28 | 29 |
| - | - | - | - | - | - | - | - | - | - | - | - | - | - | - | - | - | - | - | - | - | - | - | - | - | - | - | - | - | - |

 Low season

[Month : Next >>](#)

Rental rates - House - from 1 to 6 Person(s)

| Rates | Night | Weekend | week | 2 weeks | Month |
|---|--------------|---------|------|---------|-------|
|  Low season | £80* > 2 | - | - | - | - |
|  Mid season | £120* > 3 | - | - | - | - |
|  High season | £142* > 5 | - | - | - | - |

> Minimum Night

[Book now](#)

Booking conditions

• **Reservation**

→ Payment made upon reservation :
40% of rental sum
→ Payment balance :
2 weeks before the stay

• **rentals**

→ Day tax included
→ Cleaning charge on departure included

Accepted methods of payment

• Bank transfer (wire) • Cash

[▶ Book now](#)

[▶ Contact the owner](#)

Contact directly the property owners

www.ihacom.co.uk

Advert No.

74596

[>> Book now <<](#)

Contact

Spoken languages



* Converted at the rate indicated : €100 = \$116.85 = £89

Advert No. 74596

www.ihacom.co.uk



[>> HOLIDAY LETTINGS](#)

[BOOK DIRECT WITH THE OWNERS](#)