

Holiday lettings Albufeira "Vila Olimpica"

Enjoy family vacations, various villas for 10 people or 6 people, pets allowed, situated between Albufeira and Vilamoura.



Family Holiday Destinations ()

Villa, detached, 1 floor, separate entrance, in a(an) Private property

Setting : seaside

Capacity : from 2 to 10 person(s)

Bedroom(s) : 4

Room(s) : 5

Albufeira - Algarve

Portugal

Advert No. 7752

www.ihacom.co.uk



>> HOLIDAY LETTINGS

BOOK DIRECT WITH THE OWNERS



Holiday lettings



Villa, detached, 1 floor, separate entrance, in a(an) Private property

- **Ideal for family, group**
- **View :** unobscured, not overlooked, swimming pool, garden/park, fantastic sunset, nightlights
- **Setting :** seaside
- **Exposure :** South-west

" Our small tourist complex consists of 2 apartments (4 people); 8 apartments (6 people); and 4 villas (10 people), fully equipped. "

Assets

- **Swimming pool :**
Private swimming-pool, rectangular, cascading, step ladder, outside shower (open from '01 january' till '31 december')
- **Tennis :**
Private tennis
- **Parking :**
Covered parking : 1 carport. Parking uncovered : 1 internal, 14 reserved bay, 6 off road.
- **Advantages :**
Billiard table
- **baby equipment :**
Baby chair

Surroundings & location



" Located in Albufeira, in a easy quiet area, but with shops, supermarkets, shops, banks and bars 100 mt away and 500 mts from the Falésia Beach. We have a large pool, small pool for children, billiards table, terrace, tennis courts or football, multipurpose leisure areas and plenty of gardens. We offer free parking in the village and Internet zone. "

Leisure

- **Leisure activities less than 20 km / 12 miles :**
Snorkelling, banana boat, jet ski, surfing, windsurfing, sailing, kite surfing, golf, tennis, pathway, coastal/forest paths, mountain bike (path), hang-gliding, paragliding, boat trips, horse trekking, mini-golf, fishing, deep-sea angling, angling
- **Attractions and relaxation :**
Bar/pub, discotheque, restaurant, cinema, karaoke, park and garden, sea world, local craftshop, cellar and wine tasting, casino, sauna, health farm, beauticians

Surroundings

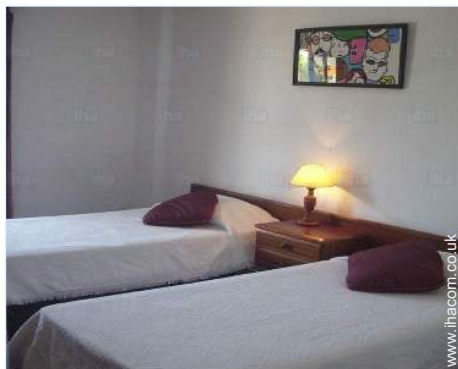
- **Locality :**
Sea/ocean
Sandy beach 0.93mi.
9 hole golf course
18 hole golf course
Cliff
- **Amenities :**
Bus stop / bus station 165'
Bus pick up point beach 165'
Bike/mountain bike hire 660'
Car rental 660'
Breadshop 660'
Caterer 330'
Local shops 990'
Supermarket 660'
Hairdressing salon 660'
Post office 3mi.
Bank 660'
Cash point 660'
Chemist 3mi.
Doctor 3mi.
Hospital 15.5mi.
Dispensing clinic 9mi.



bathroom



master bedroom



large bedroom

Interior

- **Receive up to :**
from 2 to 10 person(s) (8 adults, 2 children)
- **Liveable floor area :**
1,076 Sq.ft.
- **Interior layout :**
5 Room(s), 4 bedroom(s), 1 bathroom, 2 shower room, living room 380 Sq.ft., separate kitchen, patio, veranda
- **Sleeps - bed(s) :**
1 double bed(s), 1 sofa bed(s) 2 pers, 2 single bed(s), 2 twin beds (standard), 1 divan 1 pers
- **Guest facilities :**
T.V., cable/satelite, wifi, cupboard, Hanging wardrobe, safe deposit box, Curtains, fire alarm
- **Appliances :**
Crockery/cuttlery, kitchen utensils, electric coffee maker, electric kettle, toaster, juicer, meat grill, gas cooker, electric hobs, oven, micro-wave oven, extractor hood, refridgerator, freezer, dish washer, washing machine, iron, ironing board

Exterior

- **Ground surface :**
0.25 acre.
- **Outside accommodation :**
Terrace, covered terrace, sundeck, pergola
- **Outside setting :**
Private courtyard, enclosed grounds, garden > 0.25 acre, lawn > 0.25 acre, orchard
- **Outside amenities :**
BBQ, garden table(s), garden seat(s), parasol, chaise(s) longue(s), outside shower facilities



bathroom

Services

- **Washing :**
Sheets (1 X / per week), Quilt(s) (1 X / per week), Pillows (1 X / per week)
- **House :**
Cleaning supplement, Cleaning on departure, Garden/swimming pool maintenance, Parking, Airport transfers supplement
- **Personnel :**
Baby sitting supplement
- **Restauration :**
Breakfast supplement, Half board supplement, Full board supplement

For your guidance

- **For your guidance**
Children welcome
Pets accepted under certain conditions (ask the owner)
Mobile telephone network coverage, personal transport advisable
Water : hot/cold
Local voltage supply : 220V / 60Hz
Electricity supply : mains



bedroom

Photo album - 1



master bedroom



bathroom



large bedroom



bedroom



bathroom

Photo album - 2



separate kitchen



Interior layout



living room



terrace



bedroom



living room



Swimming pool



bedroom



kitchen

Photo album - 3



child's room



kitchen



façade



living room



View from the property



Tennis



leisure equipment



the property



sandy beach



pool view

Route map



Location & Access

" Located in Açoteias-Olhos d'Água-Albufeira, in a quiet easy area, but with trade, supermarkets, shops, banks and bars 100 mt away and 500 mts from the Falésia Beach. "



GPS coordinates in degrees, minutes, seconds: Latitude 37° 5'53.69"N - Longitude 8°10'25.53"W ([Dwelling](#))

Address

→ Est. das Açoteias
8200 Albufeira

• Motorway (junction) Via do Infante

→ Albufeira, Algarve, Portugal
→ Distance : 3mi.
→ Time : 5'

• Quarteira : (6mi.)

Contact

Spoken languages



Location



Holiday lettings Albufeira - Portugal "Vila Olimpica"

[Book now](#)

Availability calendar - from : june 2019

June	Sa	Su	M	Tu	W	Th	F	Sa	Su	M	Tu	W	Th	F	Sa	Su	M	Tu	W	Th	F	Sa	Su	M	Tu	W	Th	F	Sa	Su
2019	1	2	3	4	5	6	7	8	9	10	11	12	13	14	15	16	17	18	19	20	21	22	23	24	25	26	27	28	29	30
																-	-	-	-	-	-	-	-	-	-	-	-	-	-	

Jul	M	Tu	W	Th	F	Sa	Su	M	Tu	W	Th	F	Sa	Su	M	Tu	W	Th	F	Sa	Su	M	Tu	W	Th	F	Sa	Su	M	Tu	W
2019	1	2	3	4	5	6	7	8	9	10	11	12	13	14	15	16	17	18	19	20	21	22	23	24	25	26	27	28	29	30	31
	-	-	-	-	-	-	-	-	-	-	-	-	-	-	-	-	-	-	-	-	-	-	-	-	-	-	-	-	-	-	

Aug	Th	F	Sa	Su	M	Tu	W	Th	F	Sa	Su	M	Tu	W	Th	F	Sa	Su	M	Tu	W	Th	F	Sa	Su	M	Tu	W	Th	F	Sa
2019	1	2	3	4	5	6	7	8	9	10	11	12	13	14	15	16	17	18	19	20	21	22	23	24	25	26	27	28	29	30	31
	-	-	-	-	-	-	-	-	-	-	-	-	-	-	-	-	-	-	-	-	-	-	-	-	-	-	-	-	-	-	

Sep	Su	M	Tu	W	Th	F	Sa	Su	M	Tu	W	Th	F	Sa	Su	M	Tu	W	Th	F	Sa	Su	M	Tu	W	Th	F	Sa	Su	M
2019	1	2	3	4	5	6	7	8	9	10	11	12	13	14	15	16	17	18	19	20	21	22	23	24	25	26	27	28	29	30
	-	-	-	-	-	-	-	-	-	-	-	-	-	-	-	-	-	-	-	-	-	-	-	-	-	-	-	-	-	

Oct	Tu	W	Th	F	Sa	Su	M	Tu	W	Th	F	Sa	Su	M	Tu	W	Th	F	Sa	Su	M	Tu	W	Th	F	Sa	Su	M	Tu	W	Th
2019	1	2	3	4	5	6	7	8	9	10	11	12	13	14	15	16	17	18	19	20	21	22	23	24	25	26	27	28	29	30	31
	-	-	-	-	-	-	-	-	-	-	-	-	-	-	-	-	-	-	-	-	-	-	-	-	-	-	-	-	-	-	

Nov	F	Sa	Su	M	Tu	W	Th	F	Sa	Su	M	Tu	W	Th	F	Sa	Su	M	Tu	W	Th	F	Sa	Su	M	Tu	W	Th	F	Sa
2019	1	2	3	4	5	6	7	8	9	10	11	12	13	14	15	16	17	18	19	20	21	22	23	24	25	26	27	28	29	30
	-	-	-	-	-	-	-	-	-	-	-	-	-	-	-	-	-	-	-	-	-	-	-	-	-	-	-	-	-	

Dec	Su	M	Tu	W	Th	F	Sa	Su	M	Tu	W	Th	F	Sa	Su	M	Tu	W	Th	F	Sa	Su	M	Tu	W	Th	F	Sa	Su	M	Tu
2019	1	2	3	4	5	6	7	8	9	10	11	12	13	14	15	16	17	18	19	20	21	22	23	24	25	26	27	28	29	30	31
	-	-	-	-	-	-	-	-	-	-	-	-	-	-	-	-	-	-	-	-	-	-	-	-	-	-	-	-	-	-	

Jan	W	Th	F	Sa	Su	M	Tu	W	Th	F	Sa	Su	M	Tu	W	Th	F	Sa	Su	M	Tu	W	Th	F	Sa	Su	M	Tu	W	Th	F
2020	1	2	3	4	5	6	7	8	9	10	11	12	13	14	15	16	17	18	19	20	21	22	23	24	25	26	27	28	29	30	31
	-	-	-	-	-	-	-	-	-	-	-	-	-	-	-	-	-	-	-	-	-	-	-	-	-	-	-	-	-	-	

Feb	Sa	Su	M	Tu	W	Th	F	Sa	Su	M	Tu	W	Th	F	Sa	Su	M	Tu	W	Th	F	Sa	Su	M	Tu	W	Th	F	Sa
2020	1	2	3	4	5	6	7	8	9	10	11	12	13	14	15	16	17	18	19	20	21	22	23	24	25	26	27	28	29
	-	-	-	-	-	-	-	-	-	-	-	-	-	-	-	-	-	-	-	-	-	-	-	-	-	-	-	-	

Mar	Su	M	Tu	W	Th	F	Sa	Su	M	Tu	W	Th	F	Sa	Su	M	Tu	W	Th	F	Sa	Su	M	Tu	W	Th	F	Sa	Su	M	Tu
2020	1	2	3	4	5	6	7	8	9	10	11	12	13	14	15	16	17	18	19	20	21	22	23	24	25	26	27	28	29	30	31
	-	-	-	-	-	-	-	-	-	-	-	-	-	-	-	-	-	-	-	-	-	-	-	-	-	-	-	-	-		



Holiday lettings Albufeira - Portugal "Vila Olimpica"

10
[Book now](#)





Availability calendar - from : march 2020

Apr	W	Th	F	Sa	Su	M	Tu	W	Th	F	Sa	Su	M	Tu	W	Th	F	Sa	Su	M	Tu	W	Th							
2020	1	2	3	4	5	6	7	8	9	10	11	12	13	14	15	16	17	18	19	20	21	22	23	24	25	26	27	28	29	30
	-	-	-	-	-	-	-	-	-	-	-	-	-	-	-	-	-	-	-	-	-	-	-	-	-	-	-	-	-	

May	F	Sa	Su	M	Tu	W	Th	F	Sa	Su	M	Tu	W	Th	F	Sa	Su	M	Tu	W	Th	F	Sa	Su							
2020	1	2	3	4	5	6	7	8	9	10	11	12	13	14	15	16	17	18	19	20	21	22	23	24	25	26	27	28	29	30	31
	-	-	-	-	-	-	-	-	-	-	-	-	-	-	-	-	-	-	-	-	-	-	-	-	-	-	-	-	-	-	

[Month : Next >>](#)

Rental rates - Villa - from 2 to 10 Person(s)

Rates	Night	Weekend	week	2 weeks	Month
 Low season	£89* > 2	-	-	-	-
 Mid season	£151* > 6	-	-	-	-
 High season	-	£223*	-	-	-
 Festive specials	£111* > 2	-	-	-	-

> Minimum Night

[Book now](#)

Booking conditions

• Reservation

- Payment made upon reservation : 30% of rental sum
- Payment balance : on handing over the keys
- Deposit required

• rentals

- Service charges included
- Day tax in addition
- Cleaning charge on departure included
- Anticipated supplement for :
 - baby
 - animals
 - supplementary bed(s)

Accepted methods of payment

- Bank transfer (wire) • Cash

[▶ Book now](#)

[▶ Contact the owner](#)

Contact directly the property owners

www.ihacom.co.uk

Advert No.

7752

[>> Book now <<](#)

Contact

Spoken languages



* Converted at the rate indicated : €100 = \$116.85 = £89

Advert No. 7752

www.ihacom.co.uk



[>> HOLIDAY LETTINGS](#)

BOOK DIRECT WITH THE OWNERS