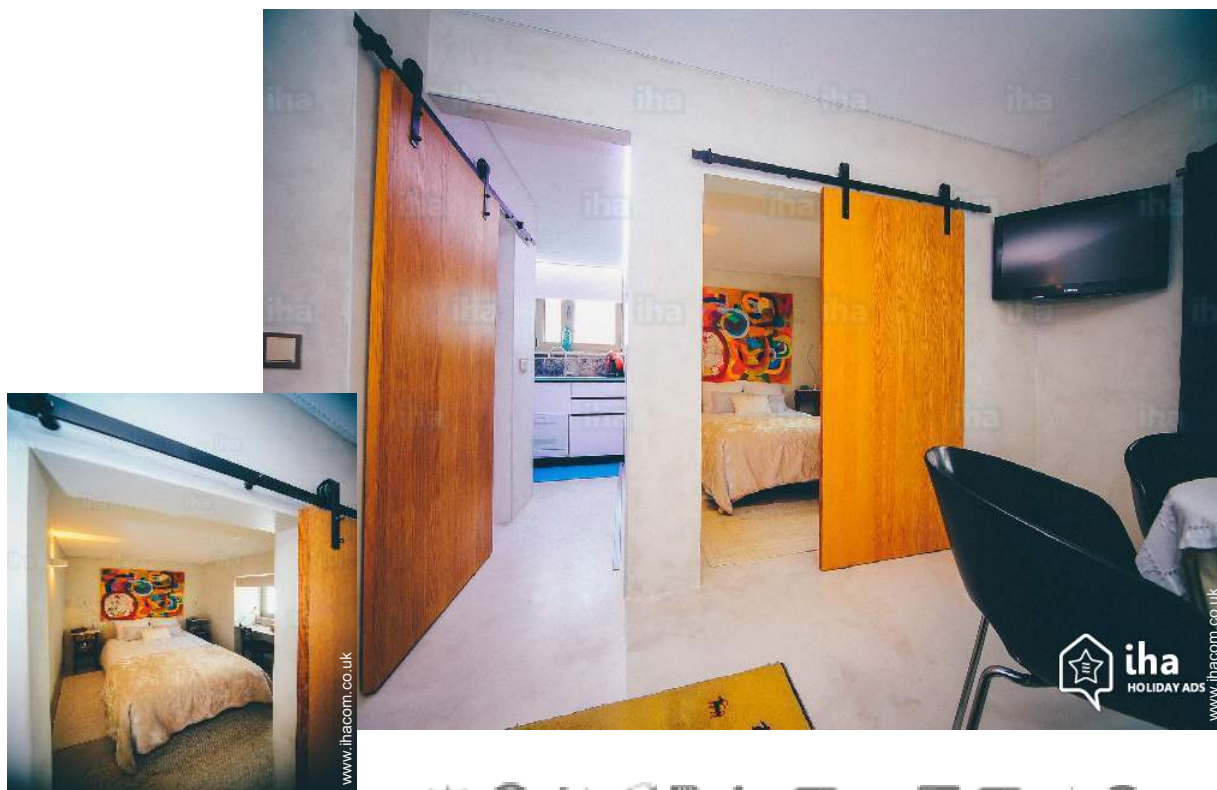


# Holiday lettings Albufeira "Casa do Sal"

Style cozy house, located at the center of Albufeira's old town, close to the main beaches (Peneco and Pescadores) and to restaurants, bars, supermarkets, local museums, shops, historic area, everything within less than a km.



**Flat-Apartments** ground floor, separate entrance, in a(an) Town House single storey

Setting : peaceful, urban

Capacity : from 1 to 4 person(s)

Bedroom(s) : 1

Room(s) : 2

Albufeira - Algarve

Portugal

Advert No. 40226

[www.ihacom.co.uk](http://www.ihacom.co.uk)



## Holiday lettings



Flat-Apartments ground floor, separate entrance, in a(an) Town House single storey

- **Ideal for couples with baby, couples**
- **View :** town, street/avenue
- **Setting :** peaceful, urban
- **Exposure :** West

" House description Clean change of sheets and towels every week; included wifi; cable. LIVING ROOM: a big comfortable sofa bed to rest during the day and sleep (2 people) during the night; dinning table with 4 chairs; air conditioning; tv with cable; closet; stereo for radio/music. BEDROOM: double bed with 2 bedside tables; small table and chair; heater. BATHROOM: shower; washing-stand; toilet; led mirror screen; towels dryer; hair dryer. KITCHEN: microwave; oven; fridge and freezer; washing machine (clothes and dishes); vitroceramic plates to cook and a smoke extractor.. Access to the whole house. The apartment is private and exclusive use. During your stay we want you to feel at home because the apartment is just yours. No car needed to enjoy your holidays! "

## Assets

- **Advantages :**  
2 bike(s)
- **baby equipment :**  
Baby chair, baby potty

## Surroundings & location



Seaside

" Water sports, Country and boat travels. Can you imagine yourself in an old city with moor like roads, clear beaches and at the same time offering you the comfort of modern times? Albufeira is a city just like this! Albufeira is one of the oldest cities in the Algarve. Its name derives from Arab and means "Sea Castle", as it occupies the centre of the region. "

### Leisure

- **Leisure activities less than 20 km / 12 miles :**

Bathing, pedalo, snorkelling, scuba diving, banana boat, water skiing, jet ski, windsurfing, sailing, golf, tennis, parascending, boat trips, go-karting, ten-pin bowling, fishing, deep-sea angling, angling, spear fishing

- **Supervised :**

Sailing school, dive school, tennis school, riding school

- **Attractions and relaxation :**

Bar/pub, discotheque, restaurant, karaoke, park and garden, sea world, historical site, museum, local craftshop, health farm, fitness centre

### Surroundings

- **Locality :**

Heated swimming pool 1.5mi.  
Sea/ocean  
Sandy beach  
Rocky beach  
Public swimming pool 1.5mi.  
Public tennis court 1.5mi.  
18 hole golf course 6mi.  
Windsurfing spots 6mi.  
Surfing spots 6mi.  
Watersports centre 1.85mi.  
Marina 1.85mi.

- **Amenities :**

Town centre <165'  
Bike/mountain bike hire  
Scooter/motorbike hire 1.25mi.  
Car rental 1.5mi.  
Boat rental 1.5mi.  
Scuba diving material hire 1.25mi.  
Caterer 1.25mi.  
Local shops 165'  
Supermarket 0.5mi.  
Hairdressing salon <165'  
Internet cafe 330'  
Post office 990'  
Bank 330'  
Cash point 330'  
Chemist 990'  
Doctor 1.25mi.  
Nurse 3mi.

Hospital 1.25mi.  
Dispensing clinic 0.93mi.



WC





double bed(s)



## Interior

- **Receive up to :**  
from 1 to 4 person(s) (4 adults)
- **Liveable floor area :**  
530 Sq.ft.
- **Interior layout :**  
2 Room(s), 1 bedroom(s), 1 shower room, 1 WC, living room 150 Sq. ft., separate kitchen, dining room
- **Sleeps - bed(s) :**  
1 double bed(s), 1 sofa bed(s) 2 pers, 1 baby cot(s)
- **Guest facilities :**  
T.V., hi-fi system, board games, t.v points, cable/satellite, internet access, high speed internet access, wifi, wardrobe, cupboard, Hanging wardrobe, radio alarmclock, hair dryer, heated towel rail, partly air conditioned, ceiling paddle fan, electric heating, Blinds, Double glazed, fire alarm
- **Appliances :**  
Crockery/cutlery, kitchen utensils, cafetiere, electric coffee maker, electric espresso coffee maker, electric kettle, toaster, electric hobs, mini-oven, micro-wave oven, extractor hood, refridgerator, freezer, dish washer, washing machine, vacuum cleaner, iron, ironing board

## Services

- **Washing :**  
Sheets, Towels, Linen, Beach towels, Blanket(s), Quilt(s), Pillows
- **House :**  
Cleaning supplement (1 X / per week +£36\*), Cleaning on departure supplement (+£36\*), Airport transfers supplement (+£45\*)
- **Personnel :**  
Laundry, Baby sitting

## For your guidance

- **For your guidance**  
Children welcome  
No pet allowed  
Non smoking rental, mobile telephone network coverage  
Water : hot/cold  
Local voltage supply : 110-120V / 60Hz

Photo album - 1



WC

double bed(s)



Photo album - 2

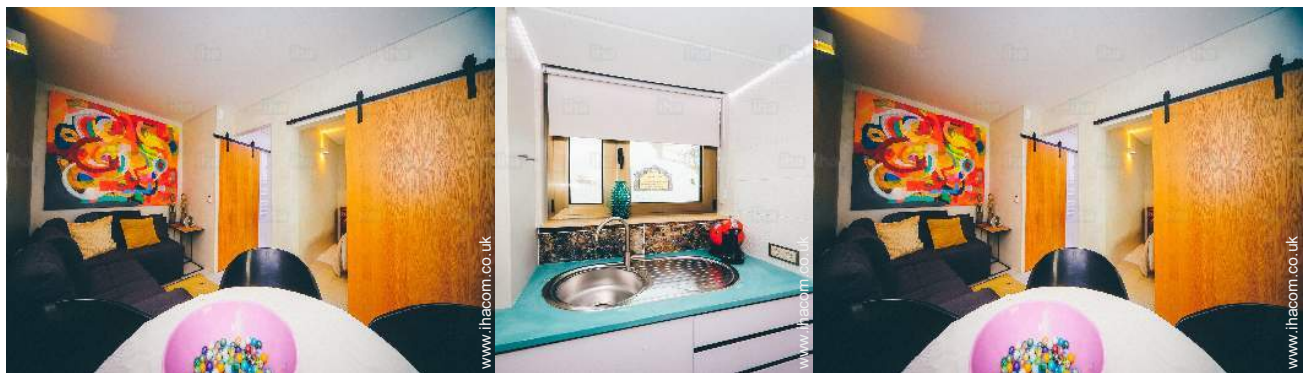


Photo album - 3



the property



WC



### Location



### Location & Access

" In the midle of the Algarve, 35 minutes fro the internacional airport. We provide you transfers "



GPS coordinates in degrees, minutes, seconds: Latitude 37°5'16"N - Longitude 8°15'5"W (Dwelling)

#### Address

→ Rua do Pico Alto  
8200 Albufeira

### Contact

Spoken languages



# Holiday lettings Algarve - Portugal "Casa do Sal"

[Book now](#)

## Availability calendar - from : june 2019

June	Sa	Su	M	Tu	W	Th	F	Sa	Su	M	Tu	W	Th	F	Sa	Su	M	Tu	W	Th	F	Sa	Su							
2019	1	2	3	4	5	6	7	8	9	10	11	12	13	14	15	16	17	18	19	20	21	22	23	24	25	26	27	28	29	30

Jul	M	Tu	W	Th	F	Sa	Su	M	Tu	W	Th	F	Sa	Su	M	Tu	W	Th	F	Sa	Su	M	Tu	W	Th	F	Sa	Su	M	Tu	W
2019	1	2	3	4	5	6	7	8	9	10	11	12	13	14	15	16	17	18	19	20	21	22	23	24	25	26	27	28	29	30	31

Aug	Th	F	Sa	Su	M	Tu	W	Th	F	Sa	Su	M	Tu	W	Th	F	Sa	Su	M	Tu	W	Th	F	Sa	Su	M	Tu	W	Th	F	Sa
2019	1	2	3	4	5	6	7	8	9	10	11	12	13	14	15	16	17	18	19	20	21	22	23	24	25	26	27	28	29	30	31

Sep	Su	M	Tu	W	Th	F	Sa	Su	M	Tu	W	Th	F	Sa	Su	M	Tu	W	Th	F	Sa	Su	M	Tu	W	Th	F	Sa	Su	M
2019	1	2	3	4	5	6	7	8	9	10	11	12	13	14	15	16	17	18	19	20	21	22	23	24	25	26	27	28	29	30

Oct	Tu	W	Th	F	Sa	Su	M	Tu	W	Th	F	Sa	Su	M	Tu	W	Th	F	Sa	Su	M	Tu	W	Th	F	Sa	Su	M	Tu	W	Th
2019	1	2	3	4	5	6	7	8	9	10	11	12	13	14	15	16	17	18	19	20	21	22	23	24	25	26	27	28	29	30	31

Nov	F	Sa	Su	M	Tu	W	Th	F	Sa	Su	M	Tu	W	Th	F	Sa	Su	M	Tu	W	Th	F	Sa	Su	M	Tu	W	Th	F	Sa
2019	1	2	3	4	5	6	7	8	9	10	11	12	13	14	15	16	17	18	19	20	21	22	23	24	25	26	27	28	29	30

Dec	Su	M	Tu	W	Th	F	Sa	Su	M	Tu	W	Th	F	Sa	Su	M	Tu	W	Th	F	Sa	Su	M	Tu	W	Th	F	Sa	Su	M	Tu
2019	1	2	3	4	5	6	7	8	9	10	11	12	13	14	15	16	17	18	19	20	21	22	23	24	25	26	27	28	29	30	31

Jan	W	Th	F	Sa	Su	M	Tu	W	Th	F	Sa	Su	M	Tu	W	Th	F	Sa	Su	M	Tu	W	Th	F	Sa	Su	M	Tu	W	Th	F
2020	1	2	3	4	5	6	7	8	9	10	11	12	13	14	15	16	17	18	19	20	21	22	23	24	25	26	27	28	29	30	31

Feb	Sa	Su	M	Tu	W	Th	F	Sa	Su	M	Tu	W	Th	F	Sa	Su	M	Tu	W	Th	F	Sa	Su						
2020	1	2	3	4	5	6	7	8	9	10	11	12	13	14	15	16	17	18	19	20	21	22	23	24	25	26	27	28	29

Mar	Su	M	Tu	W	Th	F	Sa	Su	M	Tu	W	Th	F	Sa	Su	M	Tu	W	Th	F	Sa	Su	M	Tu							
2020	1	2	3	4	5	6	7	8	9	10	11	12	13	14	15	16	17	18	19	20	21	22	23	24	25	26	27	28	29	30	31

■ High season     
 ■ Mid season     
 ■ Low season





# Holiday lettings Albufeira - Portugal "Casa do Sal"

9

[Book now](#)

## Availability calendar - from : march 2020

Apr	W	Th	F	Sa	Su	M	Tu	W	Th	F	Sa	Su	M	Tu	W	Th	F	Sa	Su	M	Tu	W	Th							
2020	1	2	3	4	5	6	7	8	9	10	11	12	13	14	15	16	17	18	19	20	21	22	23	24	25	26	27	28	29	30
	-	-	-	-	-	-	-	-	-	-	-	-	-	-	-	-	-	-	-	-	-	-	-	-	-	-	-	-	-	

May	F	Sa	Su	M	Tu	W	Th	F	Sa	Su	M	Tu	W	Th	F	Sa	Su	M	Tu	W	Th	F	Sa	Su							
2020	1	2	3	4	5	6	7	8	9	10	11	12	13	14	15	16	17	18	19	20	21	22	23	24	25	26	27	28	29	30	31
	-	-	-	-	-	-	-	-	-	-	-	-	-	-	-	-	-	-	-	-	-	-	-	-	-	-	-	-	-		

■ High season

■ Mid season

■ Low season

[Month : Next >>](#)

## Rental rates - Flat-Apartments - from 1 to 4 Person(s)

Rates	Night	Weekend	week	2 weeks	Month
<span style="color: green;">■</span> Low season	£40*	£40*	£280*	£570*	£1068*
<span style="color: blue;">■</span> Mid season	£58* ↓	£58*	£405*	£810*	£1602*
<span style="color: orange;">■</span> High season	£165* ↓ > 2	£165*	£1157*	£1958*	-
<span style="color: yellow;">■</span> Promotional period	£45* ↓ > 2	£45*	£312*	£623*	£1246*

↓ Reducing rates > Minimum Night

[Book now](#)

### Booking conditions

#### • Reservation

→ Payment made upon reservation :  
25% of rental sum  
→ Payment balance :  
on handing over the keys

#### • rentals

→ Service charges included  
→ Day tax included  
→ Cleaning charge levy on departure : £31\*

[▶ Book now](#)

[▶ Contact the owner](#)

### Accepted methods of payment

• Cash

Contact directly the property owners

[www.ihacom.co.uk](http://www.ihacom.co.uk)

Advert No.

40226

[>> Book now <<](#)

### Contact

Spoken languages



\* Converted at the rate indicated : €100 = \$116.85 = £89

Advert No. 40226

[www.ihacom.co.uk](http://www.ihacom.co.uk)



[>> HOLIDAY LETTINGS](#)

[BOOK DIRECT WITH THE OWNERS](#)