

Holiday lettings Mont Blanc "Le Tournesol"

The chalet is well displayed in this ad. Look especially to the photos from the chalet. Unique setting in summer and winter.



Chalet, detached, single storey, separate entrance, in a(an) Charming Property

Setting : ski to door, sporty

Capacity : from 2 to 12 person(s)

Bedroom(s) : 6

Room(s) : 7

Abondance - Upper Savoy (74) - Rhône-Alpes

France

Reservation : +31 (0) 255 521570 (Netherlands)

Advert No. 64497

www.ihacom.co.uk



Holiday lettings



Chalet, detached, single storey, separate entrance, in a(an) Charming Property

- **Ideal for large families, family groups**
- **View :** panoramic, unobscured, not overlooked, dominant, mountain, fantastic sunset
- **Setting :** ski to door, sporty
- **Exposure :** South

" The chalet is if you rent for 12 people still very spacious. The Interior is very cozy and gives a warm feeling. The large soapstone wood stove gives delicious heat and the flames give lots of fun. Parking in front of the door is ideal. The children can around the chalet in the summer and winter games in the alpine meadow. "

Assets

• Parking :

Covered parking : 1 carport. Parking uncovered : 3 off road.

• Advantages :

Ski locker, ski boot warmer, ping-pong table, 4 ping-pong bats

• baby equipment :

Baby chair, baby changer, baby bath, baby potty

Surroundings & location



Mountain



Ski



Fishing



Festival



Culture

" Mountain hiking and skiing in Portes du Soleil can now with the owner. He is at home in the mountains and he likes to give you all the wonderful places to show of Portes du Soleil. Walking and skiing for years he's been in this beautiful environment and still enjoy every moment as he is there. "

Leisure

- **Leisure activities less than 20 km / 12 miles :**

Alpine skiing, cross-country skiing, off-piste skiing, ski-trekking, Télémart skiing, snowboarding, luge (run), ice-skating, bathing, pedalo, water skiing, windsurfing, sailing, canoeing, canyoning, rafting, golf, tennis, hiking, climbing, rock climbing, mountain bike (path), paragliding, boat trips, horse trekking, donkey rides, mini-golf, fishing, angling, pétanque pitch

• Supervised :

Ski school, childs ski area, sailing school, tennis school

• Attractions and relaxation :

Bar/pub, discotheque, restaurant, cinema, festivals, antiques & bric-a-brac

Surroundings

• Locality :

Ski slopes 0.62mi.
Ski lifts 0.62mi.
Heated swimming pool 6mi.
Sandy beach 12.5mi.
Public tennis court 0.62mi.
18 hole golf course 12.5mi.
Flying clubs >31mi.
River rapids 6mi.
River 0.62mi.
Lake 12.5mi.
Forest 0.62mi.
Mountain range <165'
Marina 12.5mi.
Via ferrata-alpinism 3mi.

• Amenities :

Village centre 0.5mi.
Bus stop / bus station <165'
Ski bus pick up point <165'
Bike/mountain bike hire 6mi.
Boat rental 12.5mi.
Ski hire shop 0.62mi.
Breadshop 0.62mi.
Local shops 0.62mi.
Supermarket 0.62mi.
Hairdressing salon 0.62mi.
Internet cafe 0.62mi.

Post office 0.62mi.
Bank 0.62mi.
Cash point 0.62mi.
Chemist 0.62mi.
Doctor 0.62mi.



panorama



Summer



balcony

Interior

- **Receive up to :**
from 2 to 12 person(s)
- **Liveable floor area :**
1,940 Sq.ft.
- **Interior layout :**
7 Room(s), 6 bedroom(s), 1 bathroom, 1 shower room, 4 WC, living room 530 Sq.ft., large american style kitchen, dining area, cosy nook, veranda
- **Sleeps - bed(s) :**
1 double bed(s), 8 king-size bed(s), 1 bunk beds, 1 baby cot(s)
- **Guest facilities :**
T.V., home cinema, hi-fi system, DVD player, board games, book collection, film collection, Hanging wardrobe, hair dryer, heated towel rail, electric heating, solid fuel burning stoves, Curtains, Blinds, Double glazed, digipad entry system
- **Appliances :**
Crockery/cuttlery, kitchen utensils, cafetiere, electric coffee maker, electric kettle, juicer, electric cooker, oven, micro-wave oven, extractor hood, refridgerator, freezer, dish washer, washing machine, clothes dryer, vacuum cleaner

Exterior

- **Ground surface :**
6,500 Sq.ft.
- **Outside accommodation :**
Covered terrace, balcony
- **Outside setting :**
Garden, landscaped garden
- **Outside amenities :**
Garden table(s), 10 garden seat(s), trolley on wheels, 2 chaise(s) longue(s), child's swing



interior

Services

- **Washing :**
Sheets supplement (+£4*), Towels supplement (+£6*), Linen supplement (+£6*)
- **House :**
Cleaning on departure supplement (+£116*), Snow clearance, Parking

For your guidance

- **For your guidance**
Children welcome
Non smoking rental, mobile telephone network coverage, personal transport advisable
Water : hot/cold
Local voltage supply : 220-240V / 50Hz
Electricity supply : mains



interior

Photo album - 1



Summer



panorama



balcony



interior



interior

Photo album - 2



dining area



large american style kitchen



bedroom



bedroom



bathroom



bathroom

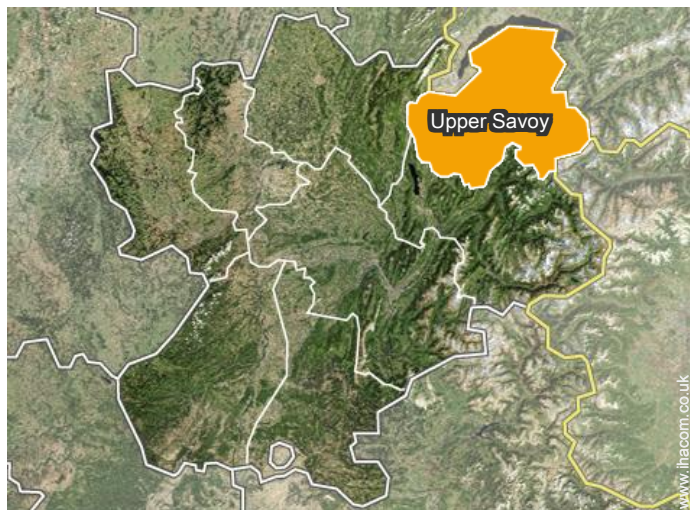


Outside setting




Surroundings

Location



Location & Access

" The chalet is within easy reach. It is located 1 km outside of Abondance in a lovely quiet area between the cows and meadows. "

 GPS coordinates in degrees, minutes, seconds: Latitude 46°17'6"N - Longitude 6°42'0"E ([Dwelling](#))

Address

→ Lieu dit Melon
74360 Abondance

• Motorway (junction) A9 no. 18

→ Monthey, Canton of Valais, Switzerland
→ Distance : 18.5mi.
→ Time : 45'

• Airport Genève

→ Geneva, Canton of Geneva, Switzerland
→ Distance : 43,5mi.
→ Time : 1h15'

- Châtel : (6mi.)
- Avoriaz : (12.5mi.)

Contact

Spoken languages



Holiday lettings Rhône-Alpes - France "Le Tournesol"

7
[Book now](#)

Availability calendar - from : october 2017

Oct	Su	M	Tu	W	Th	F	Sa	Su	M	Tu	W	Th	F	Sa	Su	M	Tu	W	Th	F	Sa	Su	M	Tu							
2017	1	2	3	4	5	6	7	8	9	10	11	12	13	14	15	16	17	18	19	20	21	22	23	24	25	26	27	28	29	30	31
																		-	-	-	-	-	-	-	-	-	-	-	-	-	

Nov	W	Th	F	Sa	Su	M	Tu	W	Th	F	Sa	Su	M	Tu	W	Th	F	Sa	Su	M	Tu	W	Th							
2017	1	2	3	4	5	6	7	8	9	10	11	12	13	14	15	16	17	18	19	20	21	22	23	24	25	26	27	28	29	30
	-	-	-	-	-	-	-	-	-	-	-	-	-	-	-	-	-	-	-	-	-	-	-	-	-	-	-	-	-	-

Dec	F	Sa	Su	M	Tu	W	Th	F	Sa	Su	M	Tu	W	Th	F	Sa	Su	M	Tu	W	Th	F	Sa	Su							
2017	1	2	3	4	5	6	7	8	9	10	11	12	13	14	15	16	17	18	19	20	21	22	23	24	25	26	27	28	29	30	31
	-	-	-	-	-	-	-	-	-	-	-	-	-	-	-	-	-	-	-	-	-	-	-	-	-	-	-	-	-	-	

Jan	M	Tu	W	Th	F	Sa	Su	M	Tu	W	Th	F	Sa	Su	M	Tu	W	Th	F	Sa	Su	M	Tu	W							
2018	1	2	3	4	5	6	7	8	9	10	11	12	13	14	15	16	17	18	19	20	21	22	23	24	25	26	27	28	29	30	31
	-	-	-	-	-	-	-	-	-	-	-	-	-	-	-	-	-	-	-	-	-	-	-	-	-	-	-	-	-	-	

Feb	Th	F	Sa	Su	M	Tu	W	Th	F	Sa	Su	M	Tu	W	Th	F	Sa	Su	M	Tu	W								
2018	1	2	3	4	5	6	7	8	9	10	11	12	13	14	15	16	17	18	19	20	21	22	23	24	25	26	27	28	
	-	-	-	-	-	-	-	-	-	-	-	-	-	-	-	-	-	-	-	-	-	-	-	-	-	-	-	-	-

Mar	Th	F	Sa	Su	M	Tu	W	Th	F	Sa	Su	M	Tu	W	Th	F	Sa	Su	M	Tu	W	Th	F	Sa							
2018	1	2	3	4	5	6	7	8	9	10	11	12	13	14	15	16	17	18	19	20	21	22	23	24	25	26	27	28	29	30	31
	-	-	-	-	-	-	-	-	-	-	-	-	-	-	-	-	-	-	-	-	-	-	-	-	-	-	-	-	-	-	

Apr	Su	M	Tu	W	Th	F	Sa	Su	M	Tu	W	Th	F	Sa	Su	M	Tu	W	Th	F	Sa	Su	M							
2018	1	2	3	4	5	6	7	8	9	10	11	12	13	14	15	16	17	18	19	20	21	22	23	24	25	26	27	28	29	30
	-	-	-	-	-	-	-	-	-	-	-	-	-	-	-	-	-	-	-	-	-	-	-	-	-	-	-	-	-	-

May	Tu	W	Th	F	Sa	Su	M	Tu	W	Th	F	Sa	Su	M	Tu	W	Th	F	Sa	Su	M	Tu	W	Th							
2018	1	2	3	4	5	6	7	8	9	10	11	12	13	14	15	16	17	18	19	20	21	22	23	24	25	26	27	28	29	30	31
	-	-	-	-	-	-	-	-	-	-	-	-	-	-	-	-	-	-	-	-	-	-	-	-	-	-	-	-	-	-	

June	F	Sa	Su	M	Tu	W	Th	F	Sa	Su	M	Tu	W	Th	F	Sa	Su	M	Tu	W	Th	F	Sa							
2018	1	2	3	4	5	6	7	8	9	10	11	12	13	14	15	16	17	18	19	20	21	22	23	24	25	26	27	28	29	30
	-	-	-	-	-	-	-	-	-	-	-	-	-	-	-	-	-	-	-	-	-	-	-	-	-	-	-	-	-	-

Jul	Su	M	Tu	W	Th	F	Sa	Su	M	Tu	W	Th	F	Sa	Su	M	Tu	W	Th	F	Sa	Su	M	Tu							
2018	1	2	3	4	5	6	7	8	9	10	11	12	13	14	15	16	17	18	19	20	21	22	23	24	25	26	27	28	29	30	31
	-	-	-	-	-	-	-	-	-	-	-	-	-	-	-	-	-	-	-	-	-	-	-	-	-	-	-	-	-	-	

Holiday lettings Mont Blanc - France "Le Tournesol"

8
[Book now](#)




Availability calendar - from : july 2018

Aug	W	Th	F	Sa	Su	M	Tu	W	Th	F	Sa	Su	M	Tu	W	Th	F	Sa	Su	M	Tu	W	Th	F	Sa	Su	M	Tu	W	Th	F
2018	1	2	3	4	5	6	7	8	9	10	11	12	13	14	15	16	17	18	19	20	21	22	23	24	25	26	27	28	29	30	31
-	-	-	-	-	-	-	-	-	-	-	-	-	-	-	-	-	-	-	-	-	-	-	-	-	-	-	-	-	-	-	

Sep	Sa	Su	M	Tu	W	Th	F	Sa	Su	M	Tu	W	Th	F	Sa	Su	M	Tu	W	Th	F	Sa	Su							
2018	1	2	3	4	5	6	7	8	9	10	11	12	13	14	15	16	17	18	19	20	21	22	23	24	25	26	27	28	29	30
-	-	-	-	-	-	-	-	-	-	-	-	-	-	-	-	-	-	-	-	-	-	-	-	-	-	-	-	-	-	

[Month : Next >>](#)

Rental rates - Chalet - from 2 to 12 Person(s)

Rates	Night	Weekend	week	2 weeks	Month
 Low season	-	-	£851* (Saturday)	-	-
 Mid season	-	-	£1747* (Saturday)	-	-
 High season	-	-	£2195* (Saturday)	-	-

(Check-in day)

[Book now](#)

Booking conditions

• Reservation

- Payment made upon reservation : 30% of rental sum
- Payment balance : 45 days before the stay
- Deposit required : £672*

• rentals

- Day tax included
- Cleaning charge levy on departure : £116*

[▶ Book now](#)

[▶ Contact the owner](#)

Accepted methods of payment

- Bank transfer (wire)

Contact directly the property owners

www.ihacom.co.uk
Advert No.
64497
[>> Book now <<](#)

Contact

Spoken languages



* Converted at the rate indicated : €100 = \$117.29 = £89.59

Advert No. 64497

www.ihacom.co.uk



[>> HOLIDAY LETTINGS](#)

[BOOK DIRECT WITH THE OWNERS](#)