

Guest House - Bed & Breakfast Saint Joseph (Reunion) "LA CAVERNE DES HIRONDELLES"

Our fully independent Chambers since access is by the pool terrace are air-conditioned, have a bathroom and WC. They are equipped with TV with dish and Wifi.



Creole House, detached, single storey, separate entrance, in a(an) Property

Setting : luxuriant, tropical

Guest Room(s) : 2

Receive up to : from 1 to 4 guests

- Room "Chambre Parme"
2 person(s)
- Room "Chambre Bleue"
2 person(s)

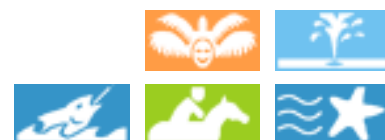
Saint Joseph (Reunion)

Reunion Island

Reservation : +262 (0) 262318086 (Reunion Island)

Advert No. 7153

www.ihacom.co.uk



Guest House - Bed & Breakfast



Creole House, detached, single storey, separate entrance, in a(an) Property

- **Ideal for all age groups, couples with baby**
- **View** : unobscured, not overlooked, sea/ocean, mountain, swimming pool, garden/park
- **Setting** : luxuriant, tropical
- **Exposure** : South-west

" You have access to the pool to share, its sunny terrace equipped with a beautiful view on the ocean and across the garden of 5000 m2 raised and flowered. It is impossible to take meals in the rooms, but there is possibility to buy dishes in various restaurants of SAINT JOSEPH, and to eat on the terrace or the terrace of the pool. We can, if need be, provide you with cutlery and put to your disposal, fridge or microwave or barbecue. Breakfast, with hot drink of choice, fresh pressed Orange, bread tradition, butter, jams-House, exotic fruit platter, yogurt, can you be served on your private terrace, the pool or under the family porch. "

Assets

- **Swimming pool** :
Private swimming-pool, rectangular (length 33', width 13'), illuminated, steps in, outside shower (open from '01 january' till '31 december")
- **Parking** :
Parking uncovered : 5 off road.
- **baby equipment** :
Playpen

Surroundings & location



" Throw from the rivers LANGEVIN and its waterfalls and Rivière des REMPARTS offering for beautiful hikes up the PITON DE LA FOURNAISE. Grand ANSE Beach, and the Bay of MANAPANY LES BAINS. Flows of the St. PHILIPPE and SAINTE ROSE "

Leisure

- **Leisure activities less than 20 km / 12 miles** :

Bathing, snorkelling, scuba diving, scuba diving (Standard diving dress), water skiing, jet ski, canoeing, canyoning, rafting, riding school, pony club, mountain bike (path), parascending, hang-gliding, paragliding, Microlights, fishing, deep-sea angling, angling, spear fishing, pétanque pitch

- **Supervised** :

Sailing school, dive school, tennis school, riding school

- **Attractions and relaxation** :

Bar/pub, discotheque, restaurant, karaoke, park and garden, leisure park, zoo/animal park, sea world, nature reserve, museum, theatre

Surroundings

- **Locality** :

Sea/ocean
Sandy beach
Shingle beach
Waterfall
Cliff
River
Mountain range

- **Amenities** :

Town centre
Bus stop / bus station
Car rental
Breadshop
Caterer
Local shops
Supermarket
Hairdressing salon
Internet cafe
Post office
Bank
Cash point
Chemist
Doctor
Nurse
Hospital
Dispensing clinic



Exterior

- **Ground surface :**
2.5 acres
- **Exterior facilities at guests disposal :**
Terrace, covered terrace
- **Outside at the guests disposal :**
Landscaped garden > 0.25 acre, lawn > 0.25 acre, orchard
- **Exterior amenities at guests disposal :**
BBQ, garden table(s), 4 garden seat(s), garden seated area, 4 sun recliner(s), outside shower facilities

Interior

- **Receive up to :**
from 1 to 4 guests, 2 Guest Room(s)
- **Liveable floor area :**
172 Sq.ft.
- **Interior comforts at guests disposal :**
T.V., fax, cable/satelite, high speed internet access, washing machine, fully air conditioned

Services

- **Restauration :**
Breakfast supplement (+£7*)
- **Washing :**
Sheets, Towels, Blanket(s), Pillows
- **House :**
Cleaning, Cleaning on departure, Garden/ swimming pool maintenance, Parking

For your guidance

- **For your guidance**
Children welcome
Pets accepted
Mobile telephone network coverage

Room "Chambre Parme"



2 person(s) : 2 adults

•Interior layout and facilities :

1 shower room, 1 WC

•Sleeps - bed(s) :

1 double bed(s), 1 possible extra bed(s)

•View :

Unobscured, not overlooked, sea/ocean, mountain, garden/park

•Exposure :

South-west

•Facilities exclusive to :

Separate entrance, private swimming pool

•Guest facilities and furnishings :

T.V., cable/satelite, high speed internet access

•baby equipment :

Playpen

•Exterior private facilities :

Terrace, covered terrace 55 Sq.ft., BBQ, garden table(s), 2 garden seat(s), 4 sun recliner(s), outside shower facilities



The guest room



view from the swimming pool



garden/park view

Room "Chambre Bleue"



2 person(s) : 2 adults

Liveable floor area : 172 Sq.ft.

Ideal for couples

•Interior layout and facilities :

1 shower room, 1 WC

•Sleeps - bed(s) :

1 double bed(s), 1 possible extra bed(s)

•View :

Unobscured, sea/ocean, mountain, swimming pool, garden/park

•Exposure :

South-west

•Facilities exclusive to :

Separate entrance, private swimming pool

•Guest facilities and furnishings :

T.V., cable/satelite, internet access, wifi, fully air conditioned

•baby equipment :

Playpen

•Exterior private facilities :

Covered terrace 55 Sq.ft., BBQ, garden table(s), 2 garden seat(s), 4 sun recliner(s), outside shower facilities



The guest room



pool view

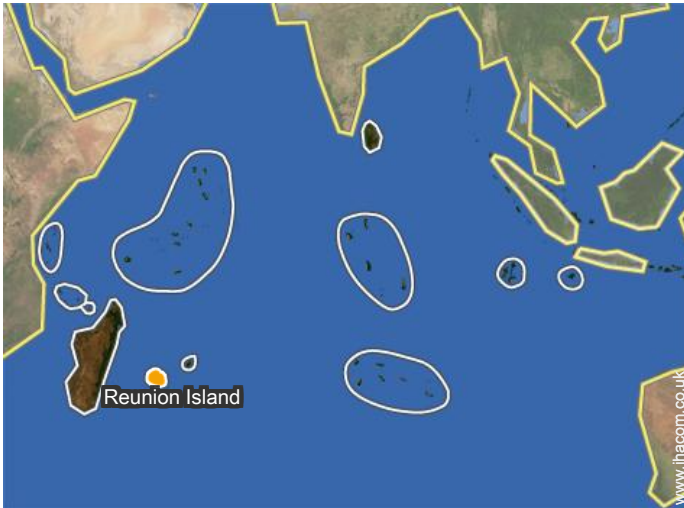


garden/park view

Photo album - 1



Location



Location & Access

" Access from the ROLAND GARROS airport, 1 h 30, or that the PIERREFONDS situated 25 km "



GPS coordinates in degrees, minutes, seconds: Latitude 21° 22'50"S - Longitude 55°37'39"E ([Dwelling](#))

Address

→ 10, rue Parny
97480 Saint Joseph (Reunion)

• Airport Roland Garros

→ Saint-Denis (Reunion), Reunion Island
→ Distance : 62mi.
→ Time : 1h30'

• Airport Saint Pierre Pierrefonds

→ Saint-Pierre, Reunion Island
→ Distance : 10mi.
→ Time : 30'

- Saint-Pierre : (9mi.)
- Saint-Philippe : (9mi.)
- Saint-Gilles-les-Bains : (31mi.)

Contact

Spoken languages



Guest House - Bed & Breakfast
 Saint Joseph (Reunion) - Reunion Island
"LA CAVERNE DES HIRONDELLES"

Availability calendar - from : september 2017

Sep	F	Sa	Su	M	Tu	W	Th	F	Sa	Su	M	Tu	W	Th	F	Sa	Su	M	Tu	W	Th	F	Sa	Su						
2017	1	2	3	4	5	6	7	8	9	10	11	12	13	14	15	16	17	18	19	20	21	22	23	24	25	26	27	28	29	30
1																			-	-	-	-	-	-	-	-	-	-	-	
2																			-	-	-	-	-	-	-	-	-	-	-	

Oct	Su	M	Tu	W	Th	F	Sa	Su	M	Tu	W	Th	F	Sa	Su	M	Tu	W	Th	F	Sa	Su	M	Tu	W	Th	F	Sa	Su	M	Tu
2017	1	2	3	4	5	6	7	8	9	10	11	12	13	14	15	16	17	18	19	20	21	22	23	24	25	26	27	28	29	30	31
1	-	-	-	-	-	-	-	-	-	-	-	-	-	-	-	-	-	-	-	-	-	-	-	-	-	-	-	-	-	-	
2	-	-	-	-	-	-	-	-	-	-	-	-	-	-	-	-	-	-	-	-	-	-	-	-	-	-	-	-	-	-	

Nov	W	Th	F	Sa	Su	M	Tu	W	Th	F	Sa	Su	M	Tu	W	Th	F	Sa	Su	M	Tu	W	Th							
2017	1	2	3	4	5	6	7	8	9	10	11	12	13	14	15	16	17	18	19	20	21	22	23	24	25	26	27	28	29	30
1	-	-	-	-	-	-	-	-	-	-	-	-	-	-	-	-	-	-	-	-	-	-	-	-	-	-	-	-	-	
2	-	-	-	-	-	-	-	-	-	-	-	-	-	-	-	-	-	-	-	-	-	-	-	-	-	-	-	-	-	

Dec	F	Sa	Su	M	Tu	W	Th	F	Sa	Su	M	Tu	W	Th	F	Sa	Su	M	Tu	W	Th	F	Sa	Su							
2017	1	2	3	4	5	6	7	8	9	10	11	12	13	14	15	16	17	18	19	20	21	22	23	24	25	26	27	28	29	30	31
1	-	-	-	-	-	-	-	-	-	-	-	-	-	-	-	-	-	-	-	-	-	-	-	-	-	-	-	-	-	-	
2	-	-	-	-	-	-	-	-	-	-	-	-	-	-	-	-	-	-	-	-	-	-	-	-	-	-	-	-	-	-	

Jan	M	Tu	W	Th	F	Sa	Su	M	Tu	W	Th	F	Sa	Su	M	Tu	W	Th	F	Sa	Su	M	Tu	W	Th	F	Sa	Su	M	Tu	W
2018	1	2	3	4	5	6	7	8	9	10	11	12	13	14	15	16	17	18	19	20	21	22	23	24	25	26	27	28	29	30	31
1	-	-	-	-	-	-	-	-	-	-	-	-	-	-	-	-	-	-	-	-	-	-	-	-	-	-	-	-	-	-	
2	-	-	-	-	-	-	-	-	-	-	-	-	-	-	-	-	-	-	-	-	-	-	-	-	-	-	-	-	-	-	

Feb	Th	F	Sa	Su	M	Tu	W	Th	F	Sa	Su	M	Tu	W	Th	F	Sa	Su	M	Tu	W							
2018	1	2	3	4	5	6	7	8	9	10	11	12	13	14	15	16	17	18	19	20	21	22	23	24	25	26	27	28
1	-	-	-	-	-	-	-	-	-	-	-	-	-	-	-	-	-	-	-	-	-	-	-	-	-	-	-	
2	-	-	-	-	-	-	-	-	-	-	-	-	-	-	-	-	-	-	-	-	-	-	-	-	-	-	-	

Mar	Th	F	Sa	Su	M	Tu	W	Th	F	Sa	Su	M	Tu	W	Th	F	Sa	Su	M	Tu	W	Th	F	Sa							
2018	1	2	3	4	5	6	7	8	9	10	11	12	13	14	15	16	17	18	19	20	21	22	23	24	25	26	27	28	29	30	31
1	-	-	-	-	-	-	-	-	-	-	-	-	-	-	-	-	-	-	-	-	-	-	-	-	-	-	-	-	-		
2	-	-	-	-	-	-	-	-	-	-	-	-	-	-	-	-	-	-	-	-	-	-	-	-	-	-	-	-	-		

Apr	Su	M	Tu	W	Th	F	Sa	Su	M	Tu	W	Th	F	Sa	Su	M	Tu	W	Th	F	Sa	Su	M							
2018	1	2	3	4	5	6	7	8	9	10	11	12	13	14	15	16	17	18	19	20	21	22	23	24	25	26	27	28	29	30
1	-	-	-	-	-	-	-	-	-	-	-	-	-	-	-	-	-	-	-	-	-	-	-	-	-	-	-	-	-	
2	-	-	-	-	-	-	-	-	-	-	-	-	-	-	-	-	-	-	-	-	-	-	-	-	-	-	-	-	-	

- 1 Room "Chambre Bleue" - 2 person(s)
- 2 Room "Chambre Parme" - 2 person(s)
- Reserved



Guest House - Bed & Breakfast
 Saint Joseph (Reunion) - Reunion Island
"LA CAVERNE DES HIRONDELLES"

[Book now](#)

Availability calendar - from : april 2018

May	Tu	W	Th	F	Sa	Su	M	Tu	W	Th	F	Sa	Su	M	Tu	W	Th	F	Sa	Su	M	Tu	W	Th	F	Sa	Su	M	Tu	W	Th
2018	1	2	3	4	5	6	7	8	9	10	11	12	13	14	15	16	17	18	19	20	21	22	23	24	25	26	27	28	29	30	31
1	-	-	-	-	-	-	-	-	-	-	-	-	-	-	-	-	-	-	-	-	-	-	-	-	-	-	-	-	-	-	-
2	-	-	-	-	-	-	-	-	-	-	-	-	-	-	-	-	-	-	-	-	-	-	-	-	-	-	-	-	-	-	-

June	F	Sa	Su	M	Tu	W	Th	F	Sa	Su	M	Tu	W	Th	F	Sa	Su	M	Tu	W	Th	F	Sa							
2018	1	2	3	4	5	6	7	8	9	10	11	12	13	14	15	16	17	18	19	20	21	22	23	24	25	26	27	28	29	30
1	-	-	-	-	-	-	-	-	-	-	-	-	-	-	-	-	-	-	-	-	-	-	-	-	-	-	-	-	-	-
2	-	-	-	-	-	-	-	-	-	-	-	-	-	-	-	-	-	-	-	-	-	-	-	-	-	-	-	-	-	-

Jul	Su	M	Tu	W	Th	F	Sa	Su	M	Tu	W	Th	F	Sa	Su	M	Tu	W	Th	F	Sa	Su	M	Tu							
2018	1	2	3	4	5	6	7	8	9	10	11	12	13	14	15	16	17	18	19	20	21	22	23	24	25	26	27	28	29	30	31
1	-	-	-	-	-	-	-	-	-	-	-	-	-	-	-	-	-	-	-	-	-	-	-	-	-	-	-	-	-	-	
2	-	-	-	-	-	-	-	-	-	-	-	-	-	-	-	-	-	-	-	-	-	-	-	-	-	-	-	-	-	-	

Aug	W	Th	F	Sa	Su	M	Tu	W	Th	F	Sa	Su	M	Tu	W	Th	F	Sa	Su	M	Tu	W	Th	F							
2018	1	2	3	4	5	6	7	8	9	10	11	12	13	14	15	16	17	18	19	20	21	22	23	24	25	26	27	28	29	30	31
1	-	-	-	-	-	-	-	-	-	-	-	-	-	-	-	-	-	-	-	-	-	-	-	-	-	-	-	-	-	-	
2	-	-	-	-	-	-	-	-	-	-	-	-	-	-	-	-	-	-	-	-	-	-	-	-	-	-	-	-	-	-	



1 Room "Chambre Bleue" - 2 person(s)

2 Room "Chambre Parme" - 2 person(s)

Reserved

[Month : Next >>](#)

Rental rates "LA CAVERNE DES HIRONDELLES"

Guest House - Bed & Breakfast Rates			Night	Weekend	week	2 weeks	Month
1	Room "Chambre Bleue" 2 person(s) (2 adults)		£49* ↓	£99*	£314*	£564*	£1012*
2	Room "Chambre Parme" 2 person(s) (2 adults)		£49* ↓	£99*	£287*	£564*	£1012*
<input type="checkbox"/> Mid season			↓ Reducing rates				

[Book now](#)



Accepted methods of payment

- Bank transfer (wire)
- Cheque
- Bankers draft
- Cash

[▶ Book now](#)

[▶ Contact the owner](#)

Contact directly the property owners

www.ihacom.co.uk

Advert No.

7153

[>> Book now <<](#)

Contact

Spoken languages



* Converted at the rate indicated : €100 = \$117.29 = £89.59

Advert No. 7153

www.ihacom.co.uk

