

# Guest House - Bed & Breakfast Heule "De Vlaschaerd"

In this 19th century flax-factory 2 roteputten were converted into a charming stay for up to 4 people and 2 apartments for 2 x 6 persons.



Theme breaks  
Nature discovery

Charming Converted Warehouse,  
detached, single storey, separate  
entrance, in a(an) Private property

Setting : enchanting, agricultural

Guest Room(s) : 1

- Charming Old Store "De Vlaschaerd"  
4 person(s)

Heule - West Flanders - Flanders

Belgium

Reservation : +32 (0) 56 25 66 27 (Belgium)

Advert No. 68238

www.ihacom.co.uk



## Guest House - Bed & Breakfast



Charming Converted Warehouse, detached, single storey, separate entrance, in a(an) Private property

- **View :** panoramic, unobscured, country side, swimming pool, farmland, village
- **Setting :** enchanting, agricultural

" In the B&B you have all the comfort: small furnished kitchen, living room, TV, video, internet, bathroom. Outside you have a spacious terrace overlooking the fields. There is a trampoline, pétanque Court, basketball goal, football goal and you can use the family swimming pool. Parking in front of the building on a large car park. At the end of september 2014 we will propose 2 other furnished apartments. Both with 2 separate bedrooms with 1 bathroom for 2 x 6 people. "

## Assets

- **Swimming pool :**  
Private swimming-pool, rectangular (length 36', width 15'), heated, illuminated, steps in (open from '15 may' till '30 september')
- **Parking :**  
Parking uncovered : 4 off road.
- **Advantages :**  
Pétanque pitch, 4 bike(s)
- **baby equipment :**  
Baby chair, baby changer, pushchair

## Surroundings & location



Countryside



Horse riding



Culture

" The B&B is quietly located on the rural outskirts of the city of Kortrijk. You can immediately connect to one of the many marked bicycle routes. Furthermore, the accommodation is ideally located for a visit to these cities: Ieper, Bruges, Ghent, Lille, Brussels and Antwerp. Also a day coast belongs to the possibilities. "

### Leisure

- **Leisure activities less than 20 km / 12 miles :**

Bathing, windsurfing, sailing, tennis, riding school, flying (club), boat trips, RC aeromodelling field, fishing, pétanque pitch

- **Attractions and relaxation :**

Bar/pub, discotheque, restaurant, cinema, park and garden, leisure park, health farm, beauticians, fitness centre

### Surroundings

- **Locality :**

Heated swimming pool

- **Amenities :**

Village centre 0.62mi.  
Town centre 3mi.  
Bike/mountain bike hire  
Breadshop  
Local shops  
Supermarket  
Cash point  
Hospital

Guest House - Bed & Breakfast  
Heule - Belgium  
"De Vlaschaerd"

3

[Book now](#)

Exterior

- Exterior facilities at guests disposal :  
Terrace, covered terrace, sundeck
- Outside at the guests disposal :  
Enclosed grounds, garden
- Exterior amenities at guests disposal :  
Garden table(s), garden seat(s), trolley on wheels

Interior

- Receive up to :  
1 Guest Room(s)
- Interior comforts at guests disposal :  
T.V., computer, internet access

Services

- Restauration :  
Breakfast
- Washing :  
Sheets, Towels
- House :  
Cleaning, Garden/swimming pool maintenance, Parking
- Personnel :  
Baby sitting

For your guidance

- For your guidance  
Children welcome  
Pets accepted  
Present on site : pets  
Non smoking rental  
Water : hot/cold  
Local voltage supply : 110-120V / 60Hz
- Handicapped people welcome  
Wheelchair access

Advert No. 68238

[www.ihacom.co.uk](http://www.ihacom.co.uk)



[>> HOLIDAY LETTINGS](#)

[BOOK DIRECT WITH THE OWNERS](#)

Charming Old Store "De Vlaschaerd"



4 person(s) : 2 adults - 2 children



bathroom

•Interior layout and facilities :

Sleeping area, 1 bathroom, 1 shower room, living room, separate kitchen

•Sleeps - bed(s) :

4 single bed(s), 1 baby cot(s)

•View :

Panoramic, unobscured, country side, swimming pool, village

•Exposure :

South-west

•Facilities exclusive to :

Separate entrance, private swimming pool, courtesy car

•Guest facilities and furnishings :

T.V., mini-bar, electric coffee maker, electric kettle, telephone, internet access, electric hobs, micro-wave oven, hair dryer, refrigerator, central heating, Curtains

•baby equipment :

Baby chair, pushchair

•Exterior private facilities :

Terrace, covered terrace, sundeck, BBQ, garden table(s), 4 garden seat(s)



interior



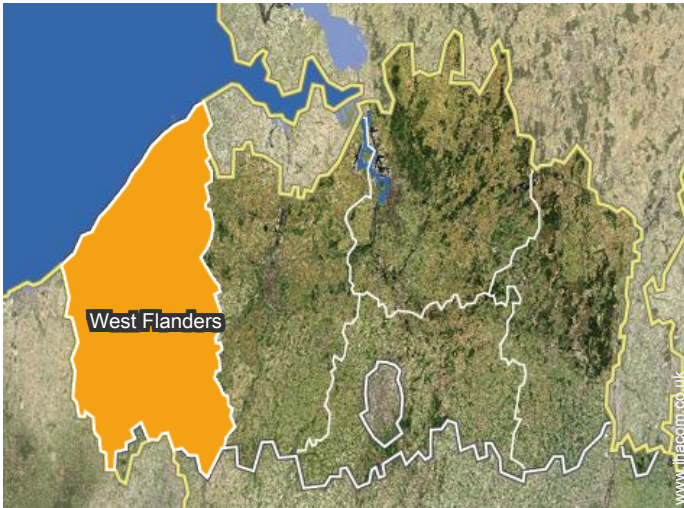
interior



[Theme breaks](#)

Nature discovery

### Location



### Location & Access



GPS coordinates in degrees, minutes, seconds: Latitude 50°52'18"N - Longitude 3°13'29"E ([Dwelling](#))

#### Address

→ Sentestraat 99  
8501 Heule

• **Motorway (junction) Courtrai**

→ Kortrijk, West Flanders, Flanders,  
Belgium

→ Distance : 1.85mi.

- Kortrijk : (1.5mi.)
- Ypres : (18.5mi.)
- Ghent : (28mi.)

### Contact

Spoken  
languages



Guest House - Bed & Breakfast  
Heule - Belgium  
"De Vlaschaerd"

[Book now](#)

Availability calendar - from : september 2017

Sep	F	Sa	Su	M	Tu	W	Th	F	Sa	Su	M	Tu	W	Th	F	Sa	Su	M	Tu	W	Th	F	Sa	Su							
2017	1	2	3	4	5	6	7	8	9	10	11	12	13	14	15	16	17	18	19	20	21	22	23	24	25	26	27	28	29	30	
1																			-	-	-	-	-	-	-	-	-	-	-		
Oct	Su	M	Tu	W	Th	F	Sa	Su	M	Tu	W	Th	F	Sa	Su	M	Tu	W	Th	F	Sa	Su	M	Tu	W	Th	F	Sa	Su	M	Tu
2017	1	2	3	4	5	6	7	8	9	10	11	12	13	14	15	16	17	18	19	20	21	22	23	24	25	26	27	28	29	30	31
1	-	-	-	-	-	-	-	-	-	-	-	-	-	-	-	-	-	-	-	-	-	-	-	-	-	-	-	-	-	-	
Nov	W	Th	F	Sa	Su	M	Tu	W	Th	F	Sa	Su	M	Tu	W	Th	F	Sa	Su	M	Tu	W	Th	F	Sa	Su	M	Tu	W	Th	
2017	1	2	3	4	5	6	7	8	9	10	11	12	13	14	15	16	17	18	19	20	21	22	23	24	25	26	27	28	29	30	
1	-	-	-	-	-	-	-	-	-	-	-	-	-	-	-	-	-	-	-	-	-	-	-	-	-	-	-	-	-	-	
Dec	F	Sa	Su	M	Tu	W	Th	F	Sa	Su	M	Tu	W	Th	F	Sa	Su	M	Tu	W	Th	F	Sa	Su	M	Tu	W	Th	F	Sa	Su
2017	1	2	3	4	5	6	7	8	9	10	11	12	13	14	15	16	17	18	19	20	21	22	23	24	25	26	27	28	29	30	31
1	-	-	-	-	-	-	-	-	-	-	-	-	-	-	-	-	-	-	-	-	-	-	-	-	-	-	-	-	-	-	
Jan	M	Tu	W	Th	F	Sa	Su	M	Tu	W	Th	F	Sa	Su	M	Tu	W	Th	F	Sa	Su	M	Tu	W	Th	F	Sa	Su	M	Tu	W
2018	1	2	3	4	5	6	7	8	9	10	11	12	13	14	15	16	17	18	19	20	21	22	23	24	25	26	27	28	29	30	31
1	-	-	-	-	-	-	-	-	-	-	-	-	-	-	-	-	-	-	-	-	-	-	-	-	-	-	-	-	-	-	
Feb	Th	F	Sa	Su	M	Tu	W	Th	F	Sa	Su	M	Tu	W	Th	F	Sa	Su	M	Tu	W	Th	F	Sa	Su	M	Tu	W			
2018	1	2	3	4	5	6	7	8	9	10	11	12	13	14	15	16	17	18	19	20	21	22	23	24	25	26	27	28			
1	-	-	-	-	-	-	-	-	-	-	-	-	-	-	-	-	-	-	-	-	-	-	-	-	-	-	-	-			
Mar	Th	F	Sa	Su	M	Tu	W	Th	F	Sa	Su	M	Tu	W	Th	F	Sa	Su	M	Tu	W	Th	F	Sa	Su	M	Tu	W	Th	F	Sa
2018	1	2	3	4	5	6	7	8	9	10	11	12	13	14	15	16	17	18	19	20	21	22	23	24	25	26	27	28	29	30	31
1	-	-	-	-	-	-	-	-	-	-	-	-	-	-	-	-	-	-	-	-	-	-	-	-	-	-	-	-	-	-	
Apr	Su	M	Tu	W	Th	F	Sa	Su	M	Tu	W	Th	F	Sa	Su	M	Tu	W	Th	F	Sa	Su	M	Tu	W	Th	F	Sa	Su	M	
2018	1	2	3	4	5	6	7	8	9	10	11	12	13	14	15	16	17	18	19	20	21	22	23	24	25	26	27	28	29	30	
1	-	-	-	-	-	-	-	-	-	-	-	-	-	-	-	-	-	-	-	-	-	-	-	-	-	-	-	-	-		
May	Tu	W	Th	F	Sa	Su	M	Tu	W	Th	F	Sa	Su	M	Tu	W	Th	F	Sa	Su	M	Tu	W	Th	F	Sa	Su	M	Tu	W	Th
2018	1	2	3	4	5	6	7	8	9	10	11	12	13	14	15	16	17	18	19	20	21	22	23	24	25	26	27	28	29	30	31
1	-	-	-	-	-	-	-	-	-	-	-	-	-	-	-	-	-	-	-	-	-	-	-	-	-	-	-	-	-	-	
June	F	Sa	Su	M	Tu	W	Th	F	Sa	Su	M	Tu	W	Th	F	Sa	Su	M	Tu	W	Th	F	Sa	Su	M	Tu	W	Th	F	Sa	
2018	1	2	3	4	5	6	7	8	9	10	11	12	13	14	15	16	17	18	19	20	21	22	23	24	25	26	27	28	29	30	
1	-	-	-	-	-	-	-	-	-	-	-	-	-	-	-	-	-	-	-	-	-	-	-	-	-	-	-	-	-		



Guest House - Bed & Breakfast  
West Flanders - Flanders  
"De Vlaschaerd"

8

[Book now](#)





Availability calendar - from : june 2018

Jul	Su	M	Tu	W	Th	F	Sa	Su	M	Tu	W	Th	F	Sa	Su	M	Tu	W	Th	F	Sa	Su	M	Tu							
2018	1	2	3	4	5	6	7	8	9	10	11	12	13	14	15	16	17	18	19	20	21	22	23	24	25	26	27	28	29	30	31
1	-	-	-	-	-	-	-	-	-	-	-	-	-	-	-	-	-	-	-	-	-	-	-	-	-	-	-	-	-	-	

Aug	W	Th	F	Sa	Su	M	Tu	W	Th	F	Sa	Su	M	Tu	W	Th	F	Sa	Su	M	Tu	W	Th	F							
2018	1	2	3	4	5	6	7	8	9	10	11	12	13	14	15	16	17	18	19	20	21	22	23	24	25	26	27	28	29	30	31
1	-	-	-	-	-	-	-	-	-	-	-	-	-	-	-	-	-	-	-	-	-	-	-	-	-	-	-	-	-	-	

[Month : Next >>](#)

Rental rates "De Vlaschaerd"

Guest House - Bed & Breakfast Rates		Night	Weekend	week	2 weeks	Month
1	Charming Old Store "De Vlaschaerd" 4 person(s) (2 adults - 2 children)	 £69* > 2	-	-	-	-
		 £72* > 2	-	-	-	-
 Low season		 High season				
> Minimum Night						

[Book now](#)

Booking conditions

• Reservation

→ Payment made upon reservation : 30% of rental sum

• rentals

- Service charges included
- Day tax included
- Cleaning charge on departure included

[▶ Book now](#)

Accepted methods of payment

- Bank transfer (wire)
- Cash

[▶ Contact the owner](#)

Contact directly the property owners

[www.ihacom.co.uk](http://www.ihacom.co.uk)

Advert No.

68238

[>> Book now <<](#)

Contact

Spoken languages



\* Converted at the rate indicated : €100 = \$117.29 = £89.59

Advert No. 68238

[www.ihacom.co.uk](http://www.ihacom.co.uk)



[>> HOLIDAY LETTINGS](#)

BOOK DIRECT WITH THE OWNERS