

Gîte - Self Catering Rouergue "Gite LaMothe"

A charming, in an old cottage farm renovated stone. Many rooms (6 rooms for 2 persons each a room of baby or young child). The House has been renovated keeping the charm of the peasant houses



Gîte - Self Catering - Stone-Built House, detached, 2 floors, separate entrance, in a(an) Hamlet

Setting : country setting

Capacity : from 2 to 12 person(s)

Bedroom(s) : 6

Room(s) : 9



Meublés de Tourisme (3 stars)

Villeneuve - Aveyron (12) - Midi-Pyrénées

France

Reservation : +33 (0) 5 65 45 63 70 (France)

Advert No. 22879

www.ihacom.co.uk



>> HOLIDAY LETTINGS

BOOK DIRECT WITH THE OWNERS

Gîte - Self Catering



Gîte - Self Catering - Stone-Built House, detached, 2 floors, separate entrance, in a (an) Hamlet

- **Ideal for family groups, large families**
- **View :** panoramic, country side, swimming pool
- **Setting :** country setting
- **Exposure :** South-east

"Several buildings are joined and formed the gite: spaces, varied levels make a space to explore for children. The House is very comfortable to accommodate a family of 4 persons, but also allows to receive, an extended family or a group (walkers, hikers...), very pleasantly. Outdoor is the campaign is 100%, the road stops here! "

Assets

• Swimming pool :

Private swimming-pool, circular (diameter 20'), step ladder, child secure, outside shower (open from '01 june' till '30 september')

• Parking :

Parking uncovered : 4 off road.

• Advantages :

Ping-pong table, 4 ping-pong bats, pétanque pitch, 5 pétanque set(s)

• baby equipment :

Baby chair, baby bath

Surroundings & location



Countryside

" Ideal location to explore this area: West-Aveyron, Quercy, Rouergue. With the cities: Villefranche de Rouergue, Villeneuve D'aveyron, Figeac and 1 hour drive Albi, Rodez, Cahors, and barely more for Millau, Toulouse. Some villages deemed: Najac, Belcastel, Conques, Peurusse rock, Saint Antonin Noble Val, Saint Cirq Lapopie. And on many tourist points: Millau Viaduct, the cellars of Roquefort, Foissac caves, Padirac Rocamadour, the valleys of the Lot, the Aveyron and Tarn. "

Leisure

- **Leisure activities less than 20 km / 12 miles :**

Bathing, pedalo, water skiing, canoeing, golf, tennis, riding school, pony club, pathway, hiking, climbing, mountain bike (path), paragliding, flying (club), boat trips, horse-drawn carriage, horse trekking, donkey rides, mini-golf, RC aeromodelling field, ten-pin bowling, hunting, acrobatics, fishing, angling, pétanque pitch

- **Attractions and relaxation :**

Bar/pub, discotheque, restaurant, cinema, open air summer cinema, park and garden, leisure park, zoo/animal park, nature reserve, historical site, museum, summer theatre, festivals, antiques & bric-a-brac, local craftshop, Bio farm

Surroundings

- **Locality :**

Public tennis court 1.25mi.
9 hole golf course 12.5mi.
River 1.25mi.
Stretch of water 0.3mi.
Forest 0.3mi.

- **Amenities :**

Village centre 1.25mi.
Town centre 4.5mi.
Breadshop 1.25mi.
Caterer 1.25mi.
Local shops 1.25mi.
Supermarket 4.5mi.
Post office 1.25mi.
Cash point 4.5mi.
Chemist 4.5mi.
Doctor 4.5mi.
Nurse 4.5mi.
Hospital 9mi.



overall view

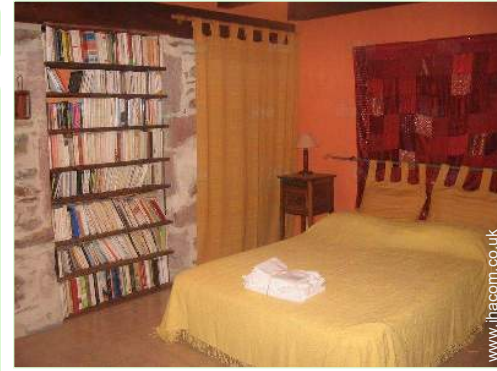




the property

Exterior

- **Ground surface :**
0.5 acre
- **Outside accommodation :**
Terrace 215 Sq.ft., balcony 65 Sq.ft., garden shed
- **Outside setting :**
Private courtyard 5,400 Sq.ft., enclosed grounds 0.37 acre, garden > 0.25 acre, lawn
- **Outside amenities :**
Summer living area, BBQ, garden table(s), 12 garden seat(s), parasol, garden seated area, 4 chaise(s) longue(s), 4 sun recliner(s), sun lounger, climbing frame, outside shower facilities



the property

Interior

- **Receive up to :**
from 2 to 12 person(s) (12 adults)
- **Liveable floor area :**
2,150 Sq.ft.
- **Interior layout :**
9 Room(s), 6 bedroom(s), 1 bathroom, 1 shower room, 3 WC, living room, separate kitchen, dining room, tv room, laundry room, pantry
- **Sleeps - bed(s) :**
4 double bed(s), 4 single bed(s), 2 folding bed(s) 1 pers, 2 baby cot(s)
- **Guest facilities :**
Fireplace, T.V., hi-fi system, videoplayer, DVD player, board games, book collection, film collection, telephone, internet access, high speed internet access, wifi, wardrobe, cupboard, Hanging wardrobe, hair dryer, central heating, wood-burning stove, Skylights, Curtains, Double glazed
- **Appliances :**
Crockery/cutlery, kitchen utensils, cafetiere, electric coffee maker, electric kettle, toaster, food processor, electric raclette set, fondue set, gas cooker, electric hobs, oven, microwave oven, extractor hood, refrigerator, freezer, dish washer, washing machine, vacuum cleaner, iron, ironing board

Services

- **Washing :**
Sheets supplement (1 X / per week +£58*), Towels supplement, Linen supplement, Blanket(s), Pillows
- **House :**
Cleaning supplement, Cleaning on departure supplement (+£58*), Garden/swimming pool maintenance, Parking
- **Personnel :**
Staff supplement (+£18*), Chef(s) supplement (+£18*), Chauffeur, Laundry, Baby sitting supplement (+£18*)
- **Restauration :**
Breakfast supplement (+£6*), Guest table supplement (+£13*), Half board supplement (+£18*), Locally produced meals supplement (+£18*), Picnic basket supplement (+£11*)

For your guidance

- **For your guidance**
Children welcome
Pets accepted under certain conditions (ask the owner)
Mobile telephone network coverage, personal transport advisable
Water : hot/cold
Electricity supply : mains



the property

Photo album - 1



overall view



the property



the property



the property

Photo album - 2



the property

the property



the property

the property



the property

the property



the property

the property

Location



Location & Access

"The cottage is situated in the commune of Salles Courbatiés, close to Villeneuve D'aveyron, between Figeac to the North and Villefranche de Rouergue in the South."



GPS coordinates in degrees, minutes, seconds: Latitude 44°28'0.1"N - Longitude 2°10'6"E ([Dwelling](#))

Address

→ La Mothe
Salles Courbatiés
12260 Villeneuve

• Airport Rodez-Aveyron

→ Rodez, Aveyron, Midi-Pyrénées, France
→ Distance : 31mi.
→ Time : 50'

• Motorway (junction) A20

→ Figeac, Lot, Midi-Pyrénées, France
→ Distance : 31mi.
→ Time : 1h

• Motorway (junction) A75

→ Sévérac-le-Château, Aveyron, Midi-

Pyrénées, France

→ Distance : 50mi.

→ Time : 1h15'

• Villefranche-de-Rouergue : (11,2mi.)

• Figeac : (13,7mi.)

• Toulouse : (68,5mi.)

Contact

Spoken languages



Gîte - Self Catering
Midi-Pyrénées - France
"Gite LaMothe"

[Book now](#)

Availability calendar - from : december 2017

Dec	F	Sa	Su	M	Tu	W	Th	F	Sa	Su	M	Tu	W	Th	F	Sa	Su	M	Tu	W	Th	F	Sa	Su							
2017	1	2	3	4	5	6	7	8	9	10	11	12	13	14	15	16	17	18	19	20	21	22	23	24	25	26	27	28	29	30	31

Jan	M	Tu	W	Th	F	Sa	Su	M	Tu	W	Th	F	Sa	Su	M	Tu	W	Th	F	Sa	Su	M	Tu	W	Th	F	Sa	Su	M	Tu	W	
2018	1	2	3	4	5	6	7	8	9	10	11	12	13	14	15	16	17	18	19	20	21	22	23	24	25	26	27	28	29	30	31	

Feb	Th	F	Sa	Su	M	Tu	W	Th	F	Sa	Su	M	Tu	W	Th	F	Sa	Su	M	Tu	W										
2018	1	2	3	4	5	6	7	8	9	10	11	12	13	14	15	16	17	18	19	20	21	22	23	24	25	26	27	28			

Mar	Th	F	Sa	Su	M	Tu	W	Th	F	Sa	Su	M	Tu	W	Th	F	Sa	Su	M	Tu	W	Th	F	Sa							
2018	1	2	3	4	5	6	7	8	9	10	11	12	13	14	15	16	17	18	19	20	21	22	23	24	25	26	27	28	29	30	31

Apr	Su	M	Tu	W	Th	F	Sa	Su	M	Tu	W	Th	F	Sa	Su	M	Tu	W	Th	F	Sa	Su	M								
2018	1	2	3	4	5	6	7	8	9	10	11	12	13	14	15	16	17	18	19	20	21	22	23	24	25	26	27	28	29	30	

May	Tu	W	Th	F	Sa	Su	M	Tu	W	Th	F	Sa	Su	M	Tu	W	Th	F	Sa	Su	M	Tu	W	Th	F	Sa	Su	M	Tu	W	Th	
2018	1	2	3	4	5	6	7	8	9	10	11	12	13	14	15	16	17	18	19	20	21	22	23	24	25	26	27	28	29	30	31	

June	F	Sa	Su	M	Tu	W	Th	F	Sa	Su	M	Tu	W	Th	F	Sa	Su	M	Tu	W	Th	F	Sa								
2018	1	2	3	4	5	6	7	8	9	10	11	12	13	14	15	16	17	18	19	20	21	22	23	24	25	26	27	28	29	30	

Jul	Su	M	Tu	W	Th	F	Sa	Su	M	Tu	W	Th	F	Sa	Su	M	Tu	W	Th	F	Sa	Su	M	Tu	W	Th	F	Sa	Su	M	Tu	
2018	1	2	3	4	5	6	7	8	9	10	11	12	13	14	15	16	17	18	19	20	21	22	23	24	25	26	27	28	29	30	31	

Aug	W	Th	F	Sa	Su	M	Tu	W	Th	F	Sa	Su	M	Tu	W	Th	F	Sa	Su	M	Tu	W	Th	F	Sa	Su	M	Tu	W	Th	F	
2018	1	2	3	4	5	6	7	8	9	10	11	12	13	14	15	16	17	18	19	20	21	22	23	24	25	26	27	28	29	30	31	

Sep	Sa	Su	M	Tu	W	Th	F	Sa	Su	M	Tu	W	Th	F	Sa	Su	M	Tu	W	Th	F	Sa	Su								
2018	1	2	3	4	5	6	7	8	9	10	11	12	13	14	15	16	17	18	19	20	21	22	23	24	25	26	27	28	29	30	

 Reserved



Availability calendar - from : september 2018


Oct	M	Tu	W	Th	F	Sa	Su	M	Tu	W	Th	F	Sa	Su	M	Tu	W	Th	F	Sa	Su	M	Tu	W							
2018	1	2	3	4	5	6	7	8	9	10	11	12	13	14	15	16	17	18	19	20	21	22	23	24	25	26	27	28	29	30	31

Nov	Th	F	Sa	Su	M	Tu	W	Th	F	Sa	Su	M	Tu	W	Th	F	Sa	Su	M	Tu	W	Th	F							
2018	1	2	3	4	5	6	7	8	9	10	11	12	13	14	15	16	17	18	19	20	21	22	23	24	25	26	27	28	29	30

 Reserved

[Month : Next >>](#)

Rental rates - Gîte - Self Catering - Stone-Built House - from 2 to 12 Person(s)

Rates	Night	Weekend	week	2 weeks	Month
 Low season	-	£403*	£609* (Saturday)	-	-
 Mid season	-	£614*	£806* (Saturday)	-	-
 High season	-	-	£1286* (Saturday)	-	-

(Check-in day)

[Book now](#)

Booking conditions

• Reservation

- Payment made upon reservation : 35% of rental sum
- Payment balance : on handing over the keys
- Deposit required : £896*

• rentals

- Service charges included
- Cleaning charge levy on departure : £49*

[▶ Book now](#)

[▶ Contact the owner](#)

Accepted methods of payment

- International Money Order
- Bank transfer (wire)
- MasterCard/EuroCard
- Cash
- Cheque
- PayPal

Contact directly the property owners

www.ihacom.co.uk

Advert No.

22879

[>> Book now <<](#)

Contact

Spoken languages



* Converted at the rate indicated : €100 = \$117.29 = £89.59

Advert No. 22879

www.ihacom.co.uk

