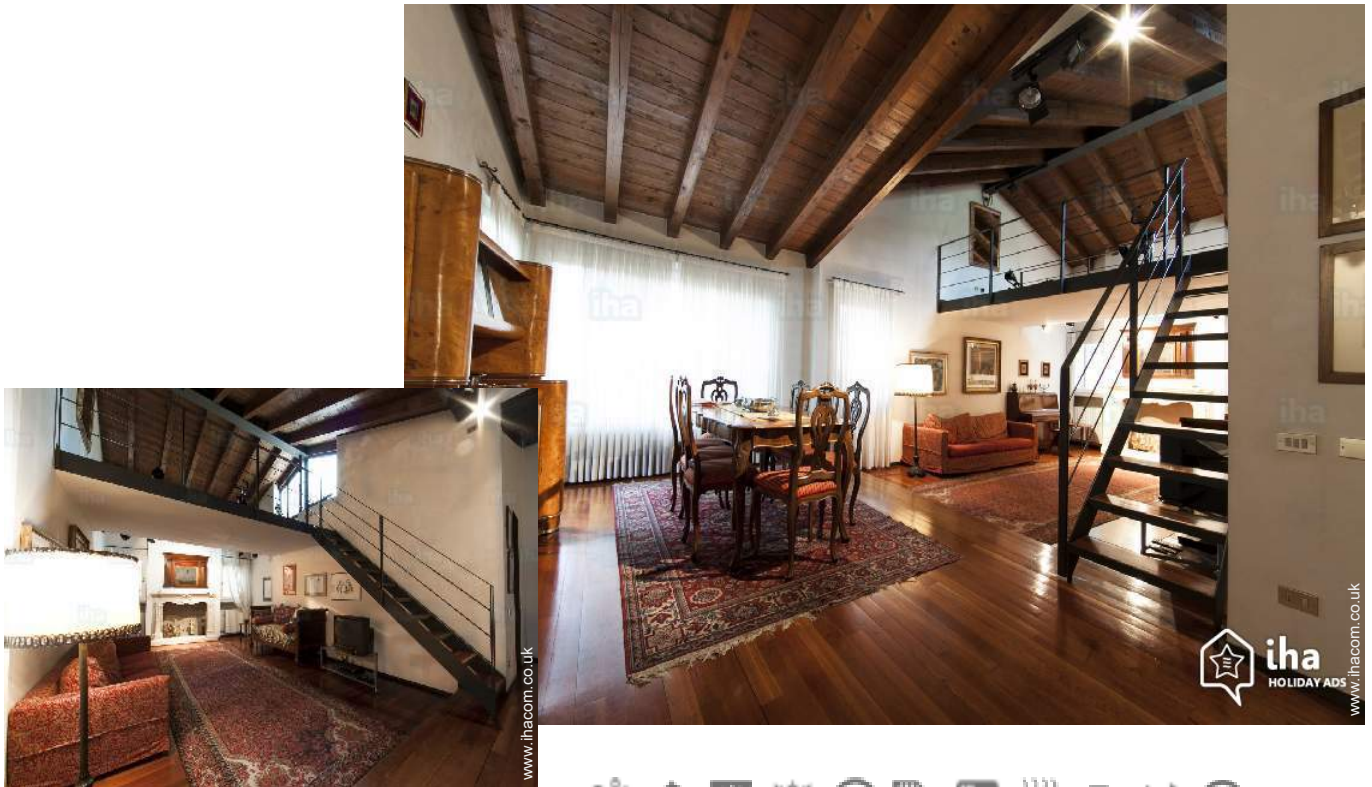


Gîte - Self Catering Verona "Agriturismo DELO"

A fine experience in our family house; a charming, comfortable and quiet House between the Hill and the River in the heart of Verona, a rooftop terrace 300 metres from the Roman amphitheatre and 10 minutes from the arena.



Gîte - Self Catering - Charming Main Farm House, semi-detached, 2 floors, shared entrance, in a(an) Farm setting

Setting : enchanting, romantic

Capacity : from 20 to 30 person(s)
Bedroom(s) : 10

Verona - Province of Verona (VR) - Veneto

Italy

Advert No. 37176

www.ihacom.co.uk



>> HOLIDAY LETTINGS

BOOK DIRECT WITH THE OWNERS



Gîte - Self Catering



Gîte - Self Catering - Charming Main Farm House, semi-detached, 2 floors, shared entrance, in a(an) Farm setting

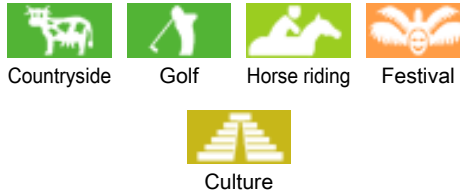
- **Ideal for all age groups, family**
- **View :** panoramic, unobscured, not overlooked, dominant, garden/park, Vineyards
- **Setting :** enchanting, romantic
- **Exposure :** South

" A refined experience life and Italian culture in a House between the Adige river and the Hill, 200 metres from the Roman amphitheatre and the stone bridge (Ponte Pietra), 10 minutes walk from the arena and Juliet's House. A large living room with fireplace of the 18th century, furniture authentic of the 19th century, an attic and a rooftop terrace panoramic; three bedrooms, two bathrooms (one with shower), a large kitchen with washing machine and dryer, wooden floor, air conditioning, free Wi - Fi. This is not a second home, a cold or anonymous, hotel where you can sleep just, but home built and furnished with taste and passion for the residence of the owners. A House that breathes culture and tradition. A « villa » of cities with large volumes, ideal for holidays, travel or tourism; It is an alternative effective and valid compared to ordinary hotels, to enjoy a good wine from Valpolicella in serenity: the magnificent Amarone della Valpolicella and the revision of the family. "

Assets

- **Swimming pool :**
Private swimming-pool, rectangular (length 6.5', width 6.5'), heated, illuminated, step ladder, outside shower (open from '01 june' till '15 september')
- **Parking :**
Parking uncovered : 14 internal, off road.
- **Advantages :**
Jacuzzi

Surroundings & location



" Ideal to live inside the cultural and artistic life of Verona; to attend important trade fairs enjoying the artistic wealth of a unique city; to enjoy the lyrical and theatrical season with a romantic stroll and visit the surroundings: to go to Venice, or Vicenza to visit the villas of Palladio, or in the magnificent Mantova di Mantegna or to see Lake Garda. Convenient for the station and the airport of Verona, allows easy access by train and by plane. "

Leisure

- **Leisure activities less than 20 km / 12 miles :**
Bathing, canoeing, rafting, golf, tennis, riding school, pathway, coastal/forest paths, hiking, mountain bike (path), kite flying, parachuting, Microlights, flying (club), glider (club), horse trekking, mini-golf, hunting, fishing, angling

- **Supervised :**
Dive school, tennis school, riding school

- **Attractions and relaxation :**
Bar/pub, discotheque, restaurant, cinema, open air summer cinema, park and garden, leisure park, zoo/animal park, nature reserve, exhibition centre, art gallery, historical site, museum, theatre, summer theatre, opera house, festivals, antiques & bric-a-brac, local craftshop, cellar and wine tasting, thermal baths, sauna, steam baths, health farm, beauticians, fitness centre

Surroundings

- **Locality :**
Ski slopes 18.5mi.
Ice skating rink 18.5mi.
Heated swimming pool 3mi.
Sandy beach 18.5mi.
Public swimming pool 3mi.
Public tennis court 3mi.
18 hole golf course 18.5mi.
Flying clubs 9mi.
Windsurfing spots 18.5mi.
Watersports centre 18.5mi.
River 6mi.
Lake 18.5mi.
Mountain range 18.5mi.
Slipway 18.5mi.
Via ferrata-alpinism 18.5mi.

- **Amenities :**
Town centre 4.5mi.
Bus stop / bus station 0.62mi.
Bike/mountain bike hire 2.5mi.
Car rental 6mi.

- Breadshop 2.5mi.
- Local shops 4.5mi.
- Supermarket 3mi.
- High class retailers 4.5mi.
- Hairdressing salon 2.5mi.
- Internet cafe 4.5mi.
- Post office 0.62mi.
- Bank 3mi.
- Chemist 3mi.
- Hospital 6mi.



sitting room



sitting room



sitting room

Interior

- **Receive up to :**
from 20 to 30 person(s) (30 adults)
- **Liveable floor area :**
8,600 Sq.ft.
- **Interior layout :**
10 bedroom(s), 11 bathroom, 11 shower room, 11 WC, living room 300 Sq.ft., sitting room 300 Sq.ft., dining room, reading room, laundry room, veranda
- **Sleeps - bed(s) :**
9 double bed(s), 9 super king-size bed(s), 2 sofa bed(s) 2 pers, 2 single bed(s), 1 sofa bed(s) 1 pers, 1 baby cot(s), 10 possible extra bed(s)
- **Guest facilities :**
Fireplace, T.V., book collection, telephone, fax, computer, internet access, high speed internet access, wifi, wardrobe, Hanging wardrobe, safe deposit box, hair dryer, fly screens, fully air conditioned, mobile cool air fan, central heating, electric heating, Curtains, Double glazed, remote controlled gates
- **Appliances :**
Washing machine, clothes dryer, iron, ironing board

Exterior

- **Ground surface :**
7.5 acres
- **Outside setting :**
Private courtyard > 0.25 acre, enclosed grounds 7.5 acres, garden 5,400 Sq.ft., landscaped garden > 0.25 acre, lawn > 0.25 acre, woods 0.62 acre, olive grove 1.5 acre, kitchen garden 1,076 Sq.ft.
- **Outside amenities :**
Summer living area, garden table(s), 20 garden seat(s), parasol, garden seated area, 3 chaise(s) longue(s), 10 sun recliner(s), outside shower facilities



separate kitchen

Services

- **Washing :**
Sheets, Towels, Blanket(s), Pillows
- **House :**
Cleaning, Parking, Airport transfers supplement (+£45*)
- **Restauration :**
Breakfast

For your guidance

- **For your guidance**
Children welcome
No pet allowed
Non smoking rental, mobile telephone network coverage, personal transport advisable
Water : hot/cold
Local voltage supply : 220-240V / 50Hz



sitting room

Photo album - 1



sitting room



sitting room



sitting room



sitting room



sitting room



separate kitchen

Photo album - 2



master bedroom



large bedroom



bedroom



bathroom

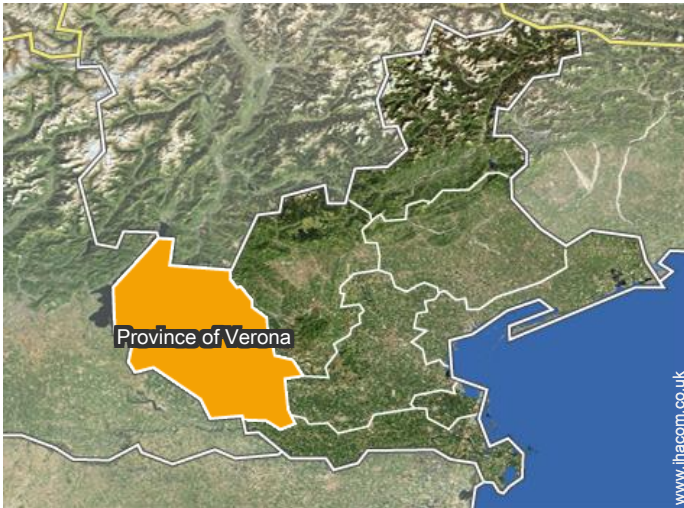


shower room



overall view

Location



Location & Access



GPS coordinates in degrees, minutes, seconds: Latitude 45°26'59"N - Longitude 10° 59'51"E ([Dwelling](#))

Address

→ Via G.B. Moschini 12
37129 Verona

• Motorway (junction) VERONA EST

→ Verona, Province of Verona, Veneto, Italy

→ Distance : 7,5mi.

→ Time : 10'

• Airport Villafranca

→ Verona, Province of Verona, Veneto, Italy

→ Distance : 17,5mi.

→ Time : 20'

• Train station Verona Porta Nuova

→ Verona, Province of Verona, Veneto, Italy

→ Distance : 6mi.

→ Time : 15'

• Vicenza : (28mi.)

• Venice : (65mi.)

• Mantua : (25mi.)

Contact

Spoken languages



Gîte - Self Catering
Verona - Italy
"Agriturismo DELO"

[Book now](#)

Availability calendar - from : september 2018

Sep	Sa	Su	M	Tu	W	Th	F	Sa	Su	M	Tu	W	Th	F	Sa	Su	M	Tu	W	Th	F	Sa	Su	M	Tu	W	Th	F	Sa	Su
2018	1	2	3	4	5	6	7	8	9	10	11	12	13	14	15	16	17	18	19	20	21	22	23	24	25	26	27	28	29	30

Oct	M	Tu	W	Th	F	Sa	Su	M	Tu	W	Th	F	Sa	Su	M	Tu	W	Th	F	Sa	Su	M	Tu	W	Th	F	Sa	Su	M	Tu	W
2018	1	2	3	4	5	6	7	8	9	10	11	12	13	14	15	16	17	18	19	20	21	22	23	24	25	26	27	28	29	30	31
	-	-	-	-	-	-	-	-	-	-	-	-	-	-	-	-	-	-	-	-	-	-	-	-	-	-	-	-	-	-	

Nov	Th	F	Sa	Su	M	Tu	W	Th	F	Sa	Su	M	Tu	W	Th	F	Sa	Su	M	Tu	W	Th	F	Sa	Su	M	Tu	W	Th	F
2018	1	2	3	4	5	6	7	8	9	10	11	12	13	14	15	16	17	18	19	20	21	22	23	24	25	26	27	28	29	30
	-	-	-	-	-	-	-	-	-	-	-	-	-	-	-	-	-	-	-	-	-	-	-	-	-	-	-	-	-	

Dec	Sa	Su	M	Tu	W	Th	F	Sa	Su	M	Tu	W	Th	F	Sa	Su	M	Tu	W	Th	F	Sa	Su	M	Tu	W	Th	F	Sa	Su	M
2018	1	2	3	4	5	6	7	8	9	10	11	12	13	14	15	16	17	18	19	20	21	22	23	24	25	26	27	28	29	30	31
	-	-	-	-	-	-	-	-	-	-	-	-	-	-	-	-	-	-	-	-	-	-	-	-	-	-	-	-	-	-	

Jan	Tu	W	Th	F	Sa	Su	M	Tu	W	Th	F	Sa	Su	M	Tu	W	Th	F	Sa	Su	M	Tu	W	Th	F	Sa	Su	M	Tu	W	Th
2019	1	2	3	4	5	6	7	8	9	10	11	12	13	14	15	16	17	18	19	20	21	22	23	24	25	26	27	28	29	30	31
	-	-	-	-	-	-	-	-	-	-	-	-	-	-	-	-	-	-	-	-	-	-	-	-	-	-	-	-	-	-	

Feb	F	Sa	Su	M	Tu	W	Th	F	Sa	Su	M	Tu	W	Th	F	Sa	Su	M	Tu	W	Th	F	Sa	Su	M	Tu	W	Th
2019	1	2	3	4	5	6	7	8	9	10	11	12	13	14	15	16	17	18	19	20	21	22	23	24	25	26	27	28
	-	-	-	-	-	-	-	-	-	-	-	-	-	-	-	-	-	-	-	-	-	-	-	-	-	-	-	-

Mar	F	Sa	Su	M	Tu	W	Th	F	Sa	Su	M	Tu	W	Th	F	Sa	Su	M	Tu	W	Th	F	Sa	Su	M	Tu	W	Th	F	Sa	Su
2019	1	2	3	4	5	6	7	8	9	10	11	12	13	14	15	16	17	18	19	20	21	22	23	24	25	26	27	28	29	30	31
	-	-	-	-	-	-	-	-	-	-	-	-	-	-	-	-	-	-	-	-	-	-	-	-	-	-	-	-	-	-	

Apr	M	Tu	W	Th	F	Sa	Su	M	Tu	W	Th	F	Sa	Su	M	Tu	W	Th	F	Sa	Su	M	Tu	W	Th	F	Sa	Su	M	Tu
2019	1	2	3	4	5	6	7	8	9	10	11	12	13	14	15	16	17	18	19	20	21	22	23	24	25	26	27	28	29	30
	-	-	-	-	-	-	-	-	-	-	-	-	-	-	-	-	-	-	-	-	-	-	-	-	-	-	-	-	-	

May	W	Th	F	Sa	Su	M	Tu	W	Th	F	Sa	Su	M	Tu	W	Th	F	Sa	Su	M	Tu	W	Th	F	Sa	Su	M	Tu	W	Th	F
2019	1	2	3	4	5	6	7	8	9	10	11	12	13	14	15	16	17	18	19	20	21	22	23	24	25	26	27	28	29	30	31
	-	-	-	-	-	-	-	-	-	-	-	-	-	-	-	-	-	-	-	-	-	-	-	-	-	-	-	-	-	-	

June	Sa	Su	M	Tu	W	Th	F	Sa	Su	M	Tu	W	Th	F	Sa	Su	M	Tu	W	Th	F	Sa	Su							
2019	1	2	3	4	5	6	7	8	9	10	11	12	13	14	15	16	17	18	19	20	21	22	23	24	25	26	27	28	29	30
	-	-	-	-	-	-	-	-	-	-	-	-	-	-	-	-	-	-	-	-	-	-	-							



Gîte - Self Catering
Province of Verona - Veneto
"Agriturismo DELO"

8

[Book now](#)



Availability calendar - from : june 2019

Jul	M	Tu	W	Th	F	Sa	Su	M	Tu	W	Th	F	Sa	Su	M	Tu	W	Th	F	Sa	Su	M	Tu	W							
2019	1	2	3	4	5	6	7	8	9	10	11	12	13	14	15	16	17	18	19	20	21	22	23	24	25	26	27	28	29	30	31
	-	-	-	-	-	-	-	-	-	-	-	-	-	-	-	-	-	-	-	-	-	-	-	-	-	-	-	-	-	-	

Aug	Th	F	Sa	Su	M	Tu	W	Th	F	Sa	Su	M	Tu	W	Th	F	Sa	Su	M	Tu	W	Th	F	Sa							
2019	1	2	3	4	5	6	7	8	9	10	11	12	13	14	15	16	17	18	19	20	21	22	23	24	25	26	27	28	29	30	31
	-	-	-	-	-	-	-	-	-	-	-	-	-	-	-	-	-	-	-	-	-	-	-	-	-	-	-	-	-	-	

[Month : Next >>](#)

Rental rates - Gîte - Self Catering - Charming Main Farm House - from 20 to 30 Person(s)

Rates	Night	Weekend	week	2 weeks	Month
 High season	£294* > 3	£890*	£1335*	£2492*	£4717*
 Promotional period	-	-	-	£2314*	£4717*

> Minimum Night

[Book now](#)

Booking conditions

• Reservation

→ Payment made upon reservation :
40% of rental sum
→ Payment balance :
on handing over the keys

• rentals

→ Service charges included
→ Day tax in addition
→ Cleaning charge on departure included
→ Anticipated supplement for :
- supplementary bed(s)

[▶ Book now](#)

[▶ Contact the owner](#)

Accepted methods of payment

• Visa/Delta/Electron • Switch/Maestro •
Bank transfer (wire) • MasterCard/
EuroCard • Cash

Contact directly the property owners

www.ihacom.co.uk

Advert No.

37176

[>> Book now <<](#)

Contact

Spoken
languages



* Converted at the rate indicated : €100 = \$116.85 = £89

Advert No. 37176

www.ihacom.co.uk



[>> HOLIDAY LETTINGS](#)

BOOK DIRECT WITH THE OWNERS