

# Gîte - Self Catering Drôme Provençale "Domaine Ayasses"

We offer our lodgings in the buildings of an old farm in the middle of nature, just a few kilometres from Crest. Ideal for family reunions, groups.



Gîte - Self Catering - Main Farm House, detached, 1 floor, separate entrance, in a(an) Estate

Setting : calm, tranquil

Capacity : from 14 to 30 person(s)

Bedroom(s) : 12

Room(s) : 17



Gîtes de France (3 ears)



Theme breaks  
Card games

Vaunaveys-la-Rochette - Drôme (26) - Rhône-Alpes  
France

Reservation : +33 (0) 628256166 (France)

www.ihacom.co.uk

Advert No. 2095



## Gîte - Self Catering



Gîte - Self Catering - Main Farm House, detached, 1 floor, separate entrance, in a(an) Estate

- **Ideal for large families, group**
- **View** : panoramic, unobscured, not overlooked, dominant, garden/park, farmland
- **Setting** : calm, tranquil
- **Exposure** : South-east

" We offer our lodgings in the buildings of an old farm in the middle of nature, just a few kilometres from Crest in the Drôme Valley. Ideal for meetings of families, or friends, we can accommodate up to 40 people in formula cottages. Nearby you will find a store 'strand of Terroir' comprising twenty local producers that will allow you to taste the products of the local soil. Lovers of nature, hiking, old stones or relaxation, the Valley of the Drôme, which houses our area and where we can enjoy the southern sweetness, will seduce you by its infinite landscapes, activities, and entertainment. The possibilities for walks, on foot or by mountain bike, there are endless. 1 french Department for organic agriculture, come and enjoy its fruits and vegetables in season (apricots, peaches, grapes, melon, garlic...). The mild climate allows usually bathe from May to September and live outside of April to October. Check out family or friends this framework green and relaxing, located near the medieval town of Crest. Unusual: Try the tent suspended for an unusual night. "

## Assets

- **Parking** :  
Parking uncovered : 12 off road.
- **Advantages** :  
Mini-golf
- **baby equipment** :  
Baby chair, baby bath

## Surroundings & location



Countryside Horse riding Festival Culture

" Lovers of nature, hiking, old stones or relaxation, the Valley of the Drôme, which houses our area and where we can enjoy the southern sweetness, will seduce you by its infinite landscapes, activities, and entertainment. The possibilities for walks, on foot or by mountain bike, there are endless. 1 french Department for organic agriculture, come and enjoy its fruits and vegetables in season (apricots, peaches, grapes, melon, garlic...). The mild climate allows usually bathe from May to September and live outside of April to October. "

### Leisure

- **Leisure activities less than 20 km / 12 miles** :

Bathing, canyoning, rafting, golf, tennis, riding school, hiking, climbing, parascending, hang-gliding, paragliding, Microlights, flying (club), glider (club), horse trekking, donkey rides

### Surroundings

- **Locality** :

Public swimming pool 3mi.  
Flying clubs 9mi.  
River 3mi.  
Via ferrata-alpinism 15.5mi.



Outside setting



Interior layout



Equipment at the guest's disposal

## Interior

- **Receive up to :**  
from 14 to 30 person(s) (24 adults, 6 children)
- **Liveable floor area :**  
3,800 Sq.ft.
- **Interior layout :**  
17 Room(s), 12 bedroom(s), 11 bathroom, 12 WC, living room 237 Sq.ft., sitting room 270 Sq.ft., dining room, mezzanine, tv room
- **Sleeps - bed(s) :**  
2 double bed(s), 4 sofa bed(s) 2 pers, 19 single bed(s), 2 bunk beds, 1 baby cot(s), 5 possible extra bed(s)
- **Guest facilities :**  
T.V., wifi, hair dryer, heated towel rail, central heating, Curtains, Double glazed
- **Appliances :**  
Crockery/cutlery, kitchen utensils, cafetiere, electric kettle, toaster, electric raclette set, electric hobs, oven, micro-wave oven, extractor hood, refridgerator, dish washer, washing machine, vacuum cleaner, iron, ironing board

## Exterior

- **Ground surface :**  
5 acres
- **Outside accommodation :**  
Terrace 1,076 Sq.ft., garden shed
- **Outside setting :**  
Private courtyard 4,300 Sq.ft., landscaped garden, wooded park 0.37 acre, woods 0.25 acre.
- **Outside amenities :**  
Garden table(s), 16 garden seat(s), 8 chaise (s) longue(s), 1 hammock(s)



bedroom

## Services

- **Washing :**  
Sheets supplement (+£6\*), Blanket(s), Quilt (s), Pillows
- **House :**  
Cleaning on departure
- **Personnel :**  
Guide supplement

## For your guidance

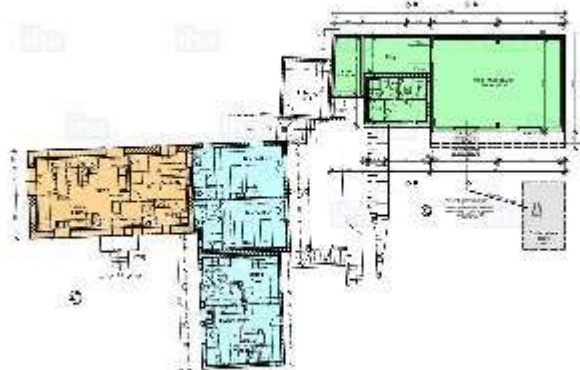
- **For your guidance**  
Children welcome  
Pets accepted under certain conditions (ask the owner)  
Non smoking rental, mobile telephone network coverage  
Water : hot/cold  
Local voltage supply : 220-240V / 50Hz  
Electricity supply : mains
- **Handicapped people welcome**  
Wheelchair access  
Fitted out for the disabled : mobility, mentally



leisure equipment

Floor plan

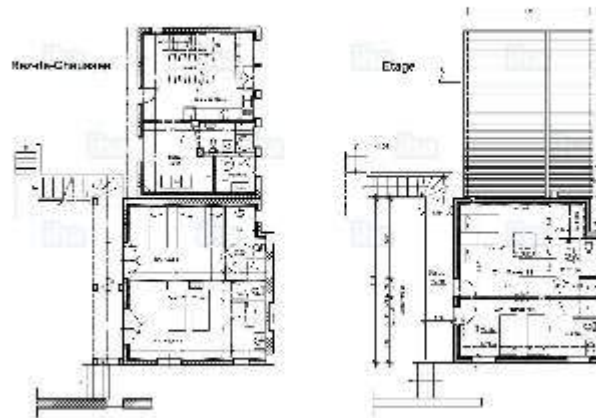
Raye - Forêt - Salle Multi-Activités  
Rez-de-Chaussée  
Échelle : 1/150



30.02.17

[www.ihacom.co.uk](http://www.ihacom.co.uk)

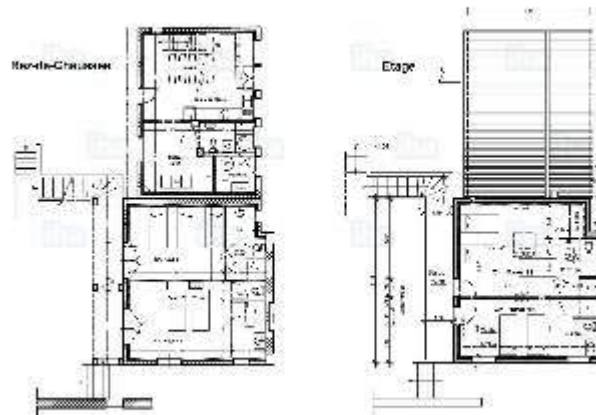
Gîte de la Raye  
Échelle au 1/100



03.03.17

[www.ihacom.co.uk](http://www.ihacom.co.uk)

Gîte de la Raye  
Échelle au 1/100



03.03.17

[www.ihacom.co.uk](http://www.ihacom.co.uk)

Photo album - 1



Interior layout



Outside setting



Equipment at the guest's disposal



leisure equipment

Photo album - 2



bedroom



view from the garden/park



small bedroom



large bedroom

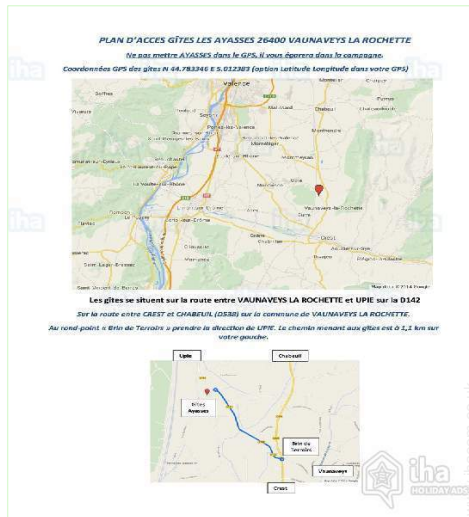


nearby

[Theme breaks](#)

Card games

## Route map



## Location & Access

" Only 5 kilometres from Crest and 20 of Valencia. "



GPS coordinates in degrees, minutes, seconds: Latitude 44° 46'58"N - Longitude 5°0'36"E ([Dwelling](#))

### Address

→ 1445 Route de Upie  
26400 Vaunaveys-la-Rochette

### • Train station Crest

→ Crest, Drôme, Rhône-Alpes, France  
→ Distance : 4.5mi.

- Crest : (4.5mi.)
- Valence : (15.5mi.)
- Montélimar : (27,5mi.)

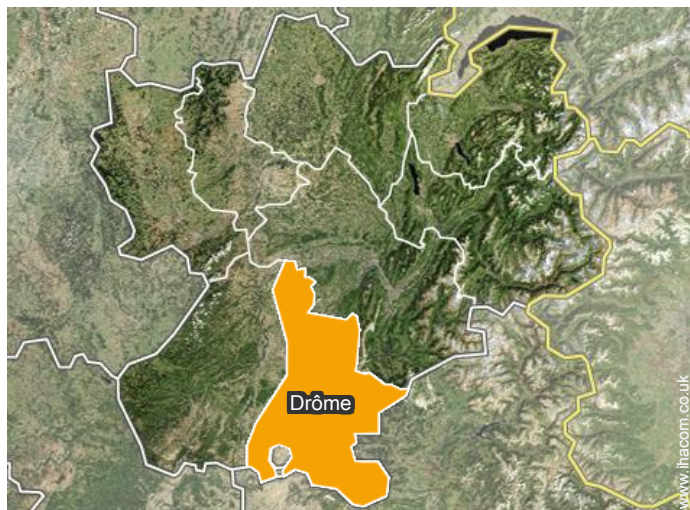
## Contact

Spoken languages





Location



Gîte - Self Catering  
 Vaunaveys-la-Rochette - France  
**"Domaine Ayasses"**

10  
[Book now](#)

Availability calendar - from : may 2018

May	Tu	W	Th	F	Sa	Su	M	Tu	W	Th	F	Sa	Su	M	Tu	W	Th	F	Sa	Su	M	Tu	W	Th							
2018	1	2	3	4	5	6	7	8	9	10	11	12	13	14	15	16	17	18	19	20	21	22	23	24	25	26	27	28	29	30	31
																					-	-	-	-	-	-	-	-	-	-	-

June	F	Sa	Su	M	Tu	W	Th	F	Sa	Su	M	Tu	W	Th	F	Sa	Su	M	Tu	W	Th	F	Sa							
2018	1	2	3	4	5	6	7	8	9	10	11	12	13	14	15	16	17	18	19	20	21	22	23	24	25	26	27	28	29	30
	-	-	-	-	-	-	-	-	-	-	-	-	-	-	-	-	-	-	-	-	-	-	-	-	-	-	-	-	-	-

Jul	Su	M	Tu	W	Th	F	Sa	Su	M	Tu	W	Th	F	Sa	Su	M	Tu	W	Th	F	Sa	Su	M	Tu							
2018	1	2	3	4	5	6	7	8	9	10	11	12	13	14	15	16	17	18	19	20	21	22	23	24	25	26	27	28	29	30	31
	-	-	-	-	-	-	-	-	-	-	-	-	-	-	-	-	-	-	-	-	-	-	-	-	-	-	-	-	-	-	-

Aug	W	Th	F	Sa	Su	M	Tu	W	Th	F	Sa	Su	M	Tu	W	Th	F	Sa	Su	M	Tu	W	Th	F							
2018	1	2	3	4	5	6	7	8	9	10	11	12	13	14	15	16	17	18	19	20	21	22	23	24	25	26	27	28	29	30	31
	-	-	-	-	-	-	-	-	-	-	-	-	-	-	-	-	-	-	-	-	-	-	-	-	-	-	-	-	-	-	-

Sep	Sa	Su	M	Tu	W	Th	F	Sa	Su	M	Tu	W	Th	F	Sa	Su	M	Tu	W	Th	F	Sa	Su							
2018	1	2	3	4	5	6	7	8	9	10	11	12	13	14	15	16	17	18	19	20	21	22	23	24	25	26	27	28	29	30
	-	-	-	-	-	-	-	-	-	-	-	-	-	-	-	-	-	-	-	-	-	-	-	-	-	-	-	-	-	-


Oct	M	Tu	W	Th	F	Sa	Su	M	Tu	W	Th	F	Sa	Su	M	Tu	W	Th	F	Sa	Su	M	Tu	W							
2018	1	2	3	4	5	6	7	8	9	10	11	12	13	14	15	16	17	18	19	20	21	22	23	24	25	26	27	28	29	30	31
	-	-	-	-	-	-	-	-	-	-	-	-	-	-	-	-	-	-	-	-	-	-	-	-	-	-	-	-	-	-	-

Nov	Th	F	Sa	Su	M	Tu	W	Th	F	Sa	Su	M	Tu	W	Th	F	Sa	Su	M	Tu	W	Th	F							
2018	1	2	3	4	5	6	7	8	9	10	11	12	13	14	15	16	17	18	19	20	21	22	23	24	25	26	27	28	29	30
	-	-	-	-	-	-	-	-	-	-	-	-	-	-	-	-	-	-	-	-	-	-	-	-	-	-	-	-	-	-

Dec	Sa	Su	M	Tu	W	Th	F	Sa	Su	M	Tu	W	Th	F	Sa	Su	M	Tu	W	Th	F	Sa	Su	M							
2018	1	2	3	4	5	6	7	8	9	10	11	12	13	14	15	16	17	18	19	20	21	22	23	24	25	26	27	28	29	30	31
	-	-	-	-	-	-	-	-	-	-	-	-	-	-	-	-	-	-	-	-	-	-	-	-	-	-	-	-	-	-	-

Jan	Tu	W	Th	F	Sa	Su	M	Tu	W	Th	F	Sa	Su	M	Tu	W	Th	F	Sa	Su	M	Tu	W	Th							
2019	1	2	3	4	5	6	7	8	9	10	11	12	13	14	15	16	17	18	19	20	21	22	23	24	25	26	27	28	29	30	31
	-	-	-	-	-	-	-	-	-	-	-	-	-	-	-	-	-	-	-	-	-	-	-	-	-	-	-	-	-	-	-

Feb	F	Sa	Su	M	Tu	W	Th	F	Sa	Su	M	Tu	W	Th	F	Sa	Su	M	Tu	W	Th									
2019	1	2	3	4	5	6	7	8	9	10	11	12	13	14	15	16	17	18	19	20	21	22	23	24	25	26	27	28		
	-	-	-	-	-	-	-	-	-	-	-	-	-	-	-	-	-	-	-	-	-	-	-	-	-	-	-	-	-	-

 Mid season



Gîte - Self Catering  
Rhône-Alpes - Drôme Provençale  
"Domaine Ayasses"

11  
[Book now](#)

Availability calendar - from : february 2019

Mar	F	Sa	Su	M	Tu	W	Th	F	Sa	Su	M	Tu	W	Th	F	Sa	Su	M	Tu	W	Th	F	Sa	Su							
2019	1	2	3	4	5	6	7	8	9	10	11	12	13	14	15	16	17	18	19	20	21	22	23	24	25	26	27	28	29	30	31
-	-	-	-	-	-	-	-	-	-	-	-	-	-	-	-	-	-	-	-	-	-	-	-	-	-	-	-	-	-	-	

Apr	M	Tu	W	Th	F	Sa	Su	M	Tu	W	Th	F	Sa	Su	M	Tu	W	Th	F	Sa	Su	M	Tu							
2019	1	2	3	4	5	6	7	8	9	10	11	12	13	14	15	16	17	18	19	20	21	22	23	24	25	26	27	28	29	30
-	-	-	-	-	-	-	-	-	-	-	-	-	-	-	-	-	-	-	-	-	-	-	-	-	-	-	-	-	-	

Mid season

[Month : Next >>](#)

Rental rates - Gîte - Self Catering - Main Farm House - from 14 to 30 Person(s)

Rates	Night	Weekend	week	2 weeks	Month
<span style="background-color: #6aa84f; color: white; padding: 2px;">Low season</span>	-	£1245* (Friday)	£1957*	-	-
<span style="background-color: #4a90e2; color: white; padding: 2px;">Mid season</span>	-	£1334* (Friday)	£2312*	-	-
<span style="background-color: #e67e22; color: white; padding: 2px;">High season</span>	-	£1423* (Friday)	£2668*	-	-

(Check-in day)

[Book now](#)

Booking conditions

• Reservation

- Payment made upon reservation : 30% of rental sum
- Payment balance : 3 weeks before the stay
- Deposit required : £1334\*

• rentals

- Service charges included
- Day tax in addition
- Cleaning charge on departure included

[▶ Book now](#)

[▶ Contact the owner](#)

Accepted methods of payment

- Bank transfer (wire) • Cheque • Holiday voucher

Contact directly the property owners

[www.ihacom.co.uk](http://www.ihacom.co.uk)  
Advert No.  
2095  
[>> Book now <<](#)

Contact

Spoken languages



\* Converted at the rate indicated : €100 = \$123.46 = £88.94

Advert No. 2095

[www.ihacom.co.uk](http://www.ihacom.co.uk)



[>> HOLIDAY LETTINGS](#)

[BOOK DIRECT WITH THE OWNERS](#)