

Gîte - Self Catering Serra da Estrela Natural Park "Casa da Lagariça"

Accommodation in the historic village of Sortelha, the village Museum of Portugal. The historic centre of Sortelha very well maintained.



Gîte - Self Catering - Country House, detached, single storey, separate entrance, in a(an) Private estate

Setting : rural, quiet

Capacity : from 1 to 12 person(s)

Bedroom(s) : 5

Room(s) : 10



Theme breaks

An introduction to regional products
Hikes

Sortelha - District of Guarda - Centro Region (Portugal)
Portugal

Advert No. 60151

www.ihacom.co.uk



>> HOLIDAY LETTINGS

BOOK DIRECT WITH THE OWNERS

Gîte - Self Catering



Gîte - Self Catering - Country House, detached, single storey, separate entrance, in a(an) Private estate

- **Ideal for all age groups, group**
- **View :** mountain, country side, garden/park, village, monument, fantastic sunset
- **Setting :** rural, quiet

" Breakfast, prepared by local/regional products and craftsmen; Firewood for heating included in the price; Free private car park; Quiet environment. Just A few metres from the historical centre of Sortelha. If you want a taste of our delicious gastronomy here are some recommendations, goat or lamb on the spit through the wild boar and deer, try also the sausages (morcela, chouriça, farinheira) and the cheeses (goat, sheep), accompanied by a good rye bread and in the end eat the doughnut, the forgotten and the rice pudding. The historic villages of Sortelha and Belmonte: urban cores with age-old Foundation prior to the Portuguese nation. Built in Highlands, constituted so that populations defense cores in them settled, even before the Roman name. Stand out by military architecture, as are surrounded by walls and develop along the Castle River-Coa in Sabugal. "

Assets

- **Tennis :**
Private tennis
- **Parking :**
Parking uncovered : 3 internal.

Surroundings & location



Countryside



Festival



Culture

" Activities: Hiking, Riverside-Coa, fishing, hunting, sports. Near the headquarters of Ethnographic Association of Sortelha (Morris dancers). In Sortelha can quietly stroll to the historic center to see the huge monuments and history. You can visit the craft shop and antiques inside the walls and enjoy the beautiful scenery. Throughout the year there are several animations as the Medieval Fair in September, the exhibition of sweets and jams and also local products in November, as well as many other events taking place throughout the year. Anyone who wants to have lunch or dinner in Sortelha, we indicate the Sancho Restaurant inside walls or the restaurant Celta. If you wander through the Region may always have lunch in the nursery where you can try trout fishing Trutra, with many other options for the region. For alam of Sortelha can visit the Museum of Sabugal, Pinhel Castle, the Serra da Malcata. ... "

Leisure

- **Leisure activities less than 20 km / 12 miles :**

Alpine skiing, cross-country skiing, off-piste skiing, ski-trekking, snowboarding, luge (run), bathing, tennis, pathway, hiking, rock climbing, mountain bike (path), kite flying, hang-gliding, paragliding, horse trekking, donkey rides, mini-golf, go-karting, ten-pin bowling, basketball, volleyball, paintball, hunting, big game hunting, deep-sea angling, pétanque pitch

- **Attractions and relaxation :**

Bar/pub, discotheque, restaurant, cinema, open air summer cinema, karaoke, park and garden, leisure park, nature reserve, exhibition centre, art gallery, historical site, museum, theatre, festivals, antiques & bric-a-brac, local craftshop, cellar and wine tasting, natural spring baths, thermal baths, health farm, beauticians

Surroundings

- **Locality :**
Ski slopes 25mi.
Heated swimming pool 6mi.
Sea/ocean >31mi.
Sandy beach 6mi.
Public swimming pool 6mi.
Public tennis court 660'
River 6mi.
Forest 0.93mi.
Mountain range 25mi.
Via ferrata-alpinism 15.5mi.

- **Amenities :**
Nursery 4.5mi.
Village centre <165'
Bus stop / bus station 165'

Breadshop 330'
Caterer 6mi.
Local shops 330'
Hairdressing salon 6mi.
Internet cafe 6mi.
Post office 6mi.
Bank 6mi.
Cash point 990'
Chemist 6mi.
Doctor 6mi.
Nurse 6mi.
Hospital 18.5mi.
Dispensing clinic 6mi.



cosy nook



kitchen



bedroom

Interior

- **Receive up to :**
from 1 to 12 person(s) (10 adults, 2 children)
- **Liveable floor area :**
2,370 Sq.ft
- **Interior layout :**
10 Room(s), 5 bedroom(s), 3 bathroom, 2 shower room, 3 WC, living room, separate kitchen, dining room, dining area, cosy nook, tv room, games room, reception hall
- **Sleeps - bed(s) :**
4 double bed(s), 2 sofa bed(s) 2 pers, 2 twin beds (standard), 1 baby cot(s), 1 possible extra bed(s)
- **Guest facilities :**
Fireplace, T.V., t.v points, telephone, fax, computer, wifi, wardrobe, cupboard, electric heating, Curtains, Double glazed, Rolling shutters
- **Appliances :**
Crockery/cutlery, kitchen utensils, cafetiere, electric coffee maker, electric espresso coffee maker, electric kettle, toaster, juicer, food processor, meat grill, oven, micro-wave oven, electric chip fryer, extractor hood, refrigerator, freezer, dish washer, washing machine, clothes dryer, vacuum cleaner, iron, ironing board



bedroom

Exterior

- **Ground surface :**
4,300 Sq.ft.
- **Outside accommodation :**
Terrace 215 Sq.ft.
- **Outside setting :**
Private courtyard 300 Sq.ft., garden 110 Sq.ft.
- **Outside amenities :**
BBQ, garden table(s), garden seat(s), child's swing, climbing frame, sand pit



bedroom

Services

- **Washing :**
Sheets, Towels, Linen supplement, Beach towels supplement, Blanket(s), Quilt(s), Pillows
- **House :**
Cleaning, Parking
- **Restauration :**
Breakfast, Locally produced meals supplement

For your guidance

- **For your guidance**
Children welcome
Pets accepted
Mobile telephone network coverage, personal transport advisable
Water : hot/cold
- **Handicapped people welcome**
Wheelchair access

Photo album - 1



kitchen



cosy nook



bedroom



bedroom



bedroom

Photo album - 2



bedroom



living room



bathroom



façade



historical site



historical site



historical site



leisure pursuits nearby



leisure pursuits nearby



leisure pursuits nearby



nearby



summer sports nearby

Photo album - 3



summer sports nearby



the house



kitchen



river



Culture



local craftshop



local craftshop



nearby



local craftshop



nearby



the house



private courtyard

Theme breaks

An introduction to regional products



Indicated duration : 1 month
All year long, Weekends only

From Nov 01 → To Dec 01

Hikes

Route map



Location & Access

"The resort is situated near the Serra da Estrela and Serra da Malcata, near Belmonte and Sabugal, and das Termas CRO. Situated on top of a high Hill, more than 760 meters above sea level, in a very rugged region of granitic nature, Sortelha is an ornate town with boulders and Baroque."

GPS coordinates in degrees, minutes, seconds: Latitude 40°19'49"N - Longitude 7°12'39"W ([Dwelling](#))

Address

→ Calçada de Santo Antão n.º 11
6320 Sortelha

• Motorway (junction) A25

→ Guarda, District of Guarda, Centro Region (Portugal), Portugal
→ Distance : 20,5mi.
→ Time : 30'

• Motorway (junction) A23

→ Caria, District of Castelo Branco, Centro Region (Portugal), Portugal
→ Distance : 8mi.
→ Time : 10'

• Motorway (junction) A23

→ Belmonte, District of Castelo Branco, Centro Region (Portugal), Portugal
→ Distance : 8.7mi.
→ Time : 10'

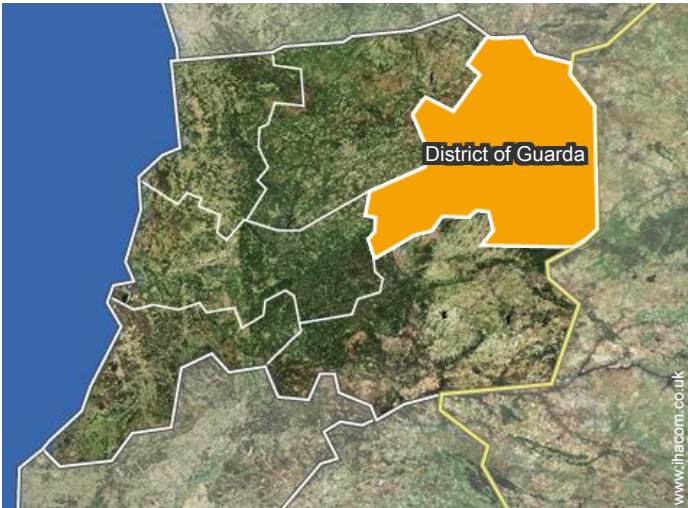
- Sabugal : (7mi.)
- Covilhã : (17,5mi.)
- Guarda : (20,5mi.)

Contact

Spoken languages



Location



Availability calendar - from : april 2019

Apr	M	Tu	W	Th	F	Sa	Su	M	Tu	W	Th	F	Sa	Su	M	Tu	W	Th	F	Sa	Su	M	Tu	W	Th	F	Sa	Su	M	Tu
2019	1	2	3	4	5	6	7	8	9	10	11	12	13	14	15	16	17	18	19	20	21	22	23	24	25	26	27	28	29	30
								-	-	-	-	-	-	-	-	-	-	-	-	-	-	-	-	-	-	-	-	-	-	-

May	W	Th	F	Sa	Su	M	Tu	W	Th	F	Sa	Su	M	Tu	W	Th	F	Sa	Su	M	Tu	W	Th	F	Sa	Su	M	Tu	W	Th	F
2019	1	2	3	4	5	6	7	8	9	10	11	12	13	14	15	16	17	18	19	20	21	22	23	24	25	26	27	28	29	30	31
	-	-	-	-	-	-	-	-	-	-	-	-	-	-	-	-	-	-	-	-	-	-	-	-	-	-	-	-	-	-	-

June	Sa	Su	M	Tu	W	Th	F	Sa	Su	M	Tu	W	Th	F	Sa	Su	M	Tu	W	Th	F	Sa	Su	M	Tu	W	Th	F	Sa	Su
2019	1	2	3	4	5	6	7	8	9	10	11	12	13	14	15	16	17	18	19	20	21	22	23	24	25	26	27	28	29	30
	-	-	-	-	-	-	-	-	-	-	-	-	-	-	-	-	-	-	-	-	-	-	-	-	-	-	-	-	-	-

Jul	M	Tu	W	Th	F	Sa	Su	M	Tu	W	Th	F	Sa	Su	M	Tu	W	Th	F	Sa	Su	M	Tu	W	Th	F	Sa	Su	M	Tu	W
2019	1	2	3	4	5	6	7	8	9	10	11	12	13	14	15	16	17	18	19	20	21	22	23	24	25	26	27	28	29	30	31
	-	-	-	-	-	-	-	-	-	-	-	-	-	-	-	-	-	-	-	-	-	-	-	-	-	-	-	-	-	-	-

Aug	Th	F	Sa	Su	M	Tu	W	Th	F	Sa	Su	M	Tu	W	Th	F	Sa	Su	M	Tu	W	Th	F	Sa	Su	M	Tu	W	Th	F	Sa
2019	1	2	3	4	5	6	7	8	9	10	11	12	13	14	15	16	17	18	19	20	21	22	23	24	25	26	27	28	29	30	31
	-	-	-	-	-	-	-	-	-	-	-	-	-	-	-	-	-	-	-	-	-	-	-	-	-	-	-	-	-	-	-

Sep	Su	M	Tu	W	Th	F	Sa	Su	M	Tu	W	Th	F	Sa	Su	M	Tu	W	Th	F	Sa	Su	M	Tu	W	Th	F	Sa	Su	M
2019	1	2	3	4	5	6	7	8	9	10	11	12	13	14	15	16	17	18	19	20	21	22	23	24	25	26	27	28	29	30
	-	-	-	-	-	-	-	-	-	-	-	-	-	-	-	-	-	-	-	-	-	-	-	-	-	-	-	-	-	-

Oct	Tu	W	Th	F	Sa	Su	M	Tu	W	Th	F	Sa	Su	M	Tu	W	Th	F	Sa	Su	M	Tu	W	Th	F	Sa	Su	M	Tu	W	Th
2019	1	2	3	4	5	6	7	8	9	10	11	12	13	14	15	16	17	18	19	20	21	22	23	24	25	26	27	28	29	30	31
	-	-	-	-	-	-	-	-	-	-	-	-	-	-	-	-	-	-	-	-	-	-	-	-	-	-	-	-	-	-	-

Nov	F	Sa	Su	M	Tu	W	Th	F	Sa	Su	M	Tu	W	Th	F	Sa	Su	M	Tu	W	Th	F	Sa	Su	M	Tu	W	Th	F	Sa
2019	1	2	3	4	5	6	7	8	9	10	11	12	13	14	15	16	17	18	19	20	21	22	23	24	25	26	27	28	29	30
	-	-	-	-	-	-	-	-	-	-	-	-	-	-	-	-	-	-	-	-	-	-	-	-	-	-	-	-	-	-

Dec	Su	M	Tu	W	Th	F	Sa	Su	M	Tu	W	Th	F	Sa	Su	M	Tu	W	Th	F	Sa	Su	M	Tu	W	Th	F	Sa	Su	M	Tu
2019	1	2	3	4	5	6	7	8	9	10	11	12	13	14	15	16	17	18	19	20	21	22	23	24	25	26	27	28	29	30	31
	-	-	-	-	-	-	-	-	-	-	-	-	-	-	-	-	-	-	-	-	-	-	-	-	-	-	-	-	-	-	-

Jan	W	Th	F	Sa	Su	M	Tu	W	Th	F	Sa	Su	M	Tu	W	Th	F	Sa	Su	M	Tu	W	Th	F	Sa	Su	M	Tu	W	Th	F
2020	1	2	3	4	5	6	7	8	9	10	11	12	13	14	15	16	17	18	19	20	21	22	23	24	25	26	27	28	29	30	31
	-	-	-	-	-	-	-	-	-	-	-	-	-	-	-	-	-	-	-	-	-	-	-	-	-	-	-	-	-	-	-

Gîte - Self Catering
Centro Region (Portugal) - Serra da Estrela Natural Park
"Casa da Lagariça"

11
[Book now](#)

Availability calendar - from : january 2020

Feb

SaSuMTuWThFSaSuMTuWThFSaSuMTuWThFSaSuMTuWThFSa

2020

1234567891011121314151617181920212223242526272829

- -

Mar

SuMTuWThFSSuMTuWThFSaSuMTuWThFSaSuMTuWThFSaSuMTu

2020

12345678910111213141516171819202122232425262728293031

- -

Month : Next >>

Rental rates - Gîte - Self Catering - Country House - from 1 to 12 Person(s)

Rates	Night	Weekend	week	2 weeks	Month
<div></div> Low season	£53* > 2	£53* (Friday)	£312*	£445*	£623*
<div></div> Mid season	£53*	£89*	£356*	£534*	£890*
<div></div> High season	£71* > 3	£125*	£401*	£712*	£1202*
<div></div> Festive specials	£53* > 2	£89*	£312*	£623*	£890*
<div></div> Promotional period	£31* > 3	£62*	£223*	£356*	£534*

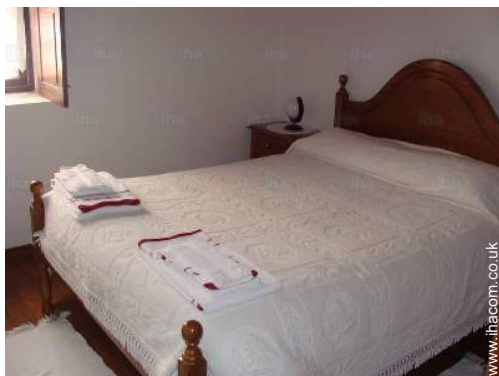
(Check-in day)

> Minimum Night

[Book now](#)

Gîte - Self Catering
District of Guarda - Sortelha
"Casa da Lagariça"

12
[Book now](#)



bedroom



bedroom



bedroom



kitchen



cosy nook

Booking conditions

- **Reservation**

→ Payment made upon reservation :
25% of rental sum

- **rentals**

→ Service charges to be added
→ Anticipated supplement for :
- baby
- supplementary bed(s)
- firewood

Accepted methods of payment

• Bank transfer (wire) • Bankers draft • Cash

► [Book now](#)

► [Contact the owner](#)

Contact directly the property owners

www.ihacom.co.uk

Advert No.

60151

>> [Book now](#) <<

Contact

Spoken
languages



* Converted at the rate indicated : €100 = \$116.85 = £89

Advert No. 60151

www.ihacom.co.uk



>> [HOLIDAY LETTINGS](#)

[BOOK DIRECT WITH THE OWNERS](#)