

Gîte - Self Catering São João de Tarouca "Casa da Portaria"

The House is the ideal place for your vacation, with family or with friends. It has 6 double rooms, swimming pool, barbecue, parking, a lounge with 100 m2 and 2000 m2 of land.



Gîte - Self Catering - Country House, detached, 2 floors, separate entrance, in a(an) Property

Setting : country setting, peaceful

Capacity : from 10 to 14 person(s)

Bedroom(s) : 6

São João de Tarouca - District of Viseu - Centro Region (Portugal)
Portugal

Advert No. 16367

www.ihacom.co.uk



>> HOLIDAY LETTINGS

BOOK DIRECT WITH THE OWNERS

Gîte - Self Catering



Gîte - Self Catering - Country House, detached, 2 floors, separate entrance, in a (an) Property

- **Ideal for family groups, large families**
- **View :** panoramic, mountain, swimming pool, farmland, river, monument
- **Setting :** country setting, peaceful
- **Exposure :** North-west

" The House has 6 double rooms, of which 3 are suites. We rent the whole house or just a part, contact us for prices and conditions. In addition to the 6 bedrooms, the house has a large hall with 100 m2, two full kitchens, 5 WC, parking, barbecue, swimming pool and 2000 m2 of land. Options. We can rent the house in its entirety, with capacity for 12 people, or just a part, having an independent kitchen area and the number of rooms you need. "

Assets

- **Swimming pool :**

Private swimming-pool, rectangular (length 33', width 16'), steps in, step ladder, outside shower (open from '01 april' till '15 september')

- **Parking :**

Parking uncovered : 2 internal.

- **Advantages :**

Darts, 3 bike(s)

Surroundings & location



Countryside



Culture

" Located in the Douro region, famous for its wine and landscapes, is located in an historic village, with a magnificent Monastery, Church, bridges. The river Varosa passes by with waterfalls, windmills and places to swim. "

Leisure

- **Leisure activities less than 20 km / 12 miles :**

Banana boat, water skiing, jet ski, canoeing, canyoning, rafting, tennis, squash, riding school, climbing, hang-gliding, paragliding, boat trips, mini-golf, ATV/Quad Bike, RC modelling track, basketball, volleyball, paintball, hunting, fishing

Surroundings

- **Locality :**

Heated swimming pool 12.5mi.
Sea/ocean >31mi.
Creek 15.5mi.
Public swimming pool 6mi.
Public tennis court 9mi.
9 hole golf course >31mi.
Waterfall 0.3mi.
River 660'
Stretch of water 15.5mi.
Mountain range 0.62mi.
Slipway 12.5mi.
Jetski slipway 12.5mi.





view from the garden/park

Interior

- **Receive up to :**

from 10 to 14 person(s) (12 adults, 2 children)

- **Interior layout :**

6 bedroom(s), 5 bathroom, living room 270 Sq.ft., sitting room 970 Sq.ft., separate kitchen, dining area, cosy nook, games room, reception hall

- **Sleeps - bed(s) :**

4 double bed(s), 1 king-size bed(s), 2 sofa bed(s) 1 pers

- **Guest facilities :**

Fireplace, T.V., home cinema, hi-fi system, videoplayer, DVD player, board games, book collection, film collection, t.v points, telephone, cable/satelite, wifi, wardrobe, central heating, Curtains, Blinds, Double glazed

- **Appliances :**

Crockery/cuttlery, kitchen utensils, cafetiere, electric espresso coffee maker, toaster, juicer, meat grill, gas cooker, oven, mini-oven, micro-wave oven, extractor hood, refridgerator, freezer, dish washer, washing machine, vacuum cleaner, iron, ironing board

Exterior

- **Ground surface :**

0.5 acre

- **Outside accommodation :**

Terrace 750 Sq.ft., sundeck 1,940 Sq.ft., gazebo, traditional tent

- **Outside setting :**

Private courtyard 750 Sq.ft., enclosed grounds 0.5 acre, olive grove

- **Outside amenities :**

BBQ, garden table(s), 8 garden seat(s), arbour, parasol, 3 chaise(s) longue(s), 1 hammock(s), 1 rocking chair(s), outside shower facilities



kitchen

Services

- **Washing :**

Sheets (1 X / per week), Towels (1 X / per week), Linen (1 X / per week), Blanket(s) (1 X / per week), Quilt(s) (1 X / per week), Pillows (1 X / per week)

- **House :**

Cleaning (1 X / per week), Garden/swimming pool maintenance (1 X / per week)

- **Restauration :**

Breakfast supplement (+£9*)

For your guidance

- **For your guidance**

Children welcome

Water : hot/cold

Local voltage supply : 220-240V / 50Hz



master bedroom

Photo album - 1



view from the garden/park



master bedroom



kitchen

Photo album - 2



bedroom



bedroom



living room



bathroom



kitchen



bedroom



bedroom



sitting room

Photo album - 3



sitting room



reception hall



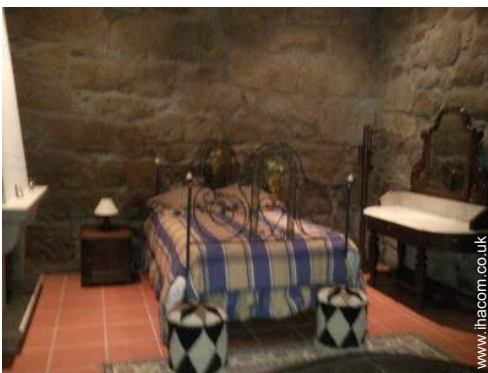
bathroom



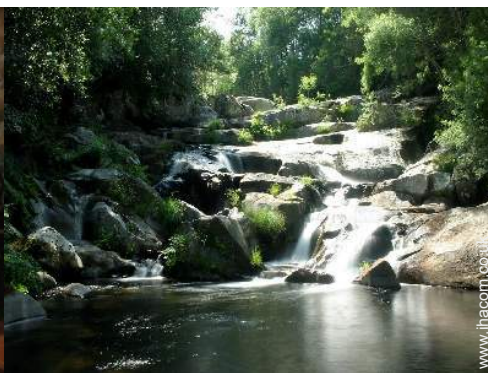
historical site



historical site



bedroom



waterfall



private courtyard

Location



Location & Access

" In the Centre of São João de Tarouca, in front of the Church. "



GPS coordinates in degrees, minutes, seconds: Latitude 40°59'40"N - Longitude 7°44'54"W (Dwelling)

Address

→ Casa da Portaria
3610 082 São João de Tarouca

- Lamego : (9mi.)
- Peso da Régua : (14,5mi.)
- Vila Real : (28mi.)

Contact

Spoken languages



Gîte - Self Catering
 District of Viseu - Centro Region (Portugal)
"Casa da Portaria"

Availability calendar - from : march 2018

Mar	Th	F	Sa	Su	M	Tu	W	Th	F	Sa	Su	M	Tu	W	Th	F	Sa	Su	M	Tu	W	Th	F	Sa	Su	M	Tu	W	Th	F	Sa
2018	1	2	3	4	5	6	7	8	9	10	11	12	13	14	15	16	17	18	19	20	21	22	23	24	25	26	27	28	29	30	31
																						-	-	-	-	-	-	-	-	-	-

Apr	Su	M	Tu	W	Th	F	Sa	Su	M	Tu	W	Th	F	Sa	Su	M	Tu	W	Th	F	Sa	Su	M	Tu	W	Th	F	Sa	Su	M
2018	1	2	3	4	5	6	7	8	9	10	11	12	13	14	15	16	17	18	19	20	21	22	23	24	25	26	27	28	29	30
	-	-	-	-	-	-	-	-	-	-	-	-	-	-	-	-	-	-	-	-	-	-	-	-	-	-	-	-	-	-

May	Tu	W	Th	F	Sa	Su	M	Tu	W	Th	F	Sa	Su	M	Tu	W	Th	F	Sa	Su	M	Tu	W	Th	F	Sa	Su	M	Tu	W	Th
2018	1	2	3	4	5	6	7	8	9	10	11	12	13	14	15	16	17	18	19	20	21	22	23	24	25	26	27	28	29	30	31
	-	-	-	-	-	-	-	-	-	-	-	-	-	-	-	-	-	-	-	-	-	-	-	-	-	-	-	-	-	-	-

June	F	Sa	Su	M	Tu	W	Th	F	Sa	Su	M	Tu	W	Th	F	Sa	Su	M	Tu	W	Th	F	Sa							
2018	1	2	3	4	5	6	7	8	9	10	11	12	13	14	15	16	17	18	19	20	21	22	23	24	25	26	27	28	29	30
	-	-	-	-	-	-	-	-	-	-	-	-	-	-	-	-	-	-	-	-	-	-	-	-	-	-	-	-	-	-

Jul	Su	M	Tu	W	Th	F	Sa	Su	M	Tu	W	Th	F	Sa	Su	M	Tu	W	Th	F	Sa	Su	M	Tu	W	Th	F	Sa	Su	M	Tu
2018	1	2	3	4	5	6	7	8	9	10	11	12	13	14	15	16	17	18	19	20	21	22	23	24	25	26	27	28	29	30	31
	-	-	-	-	-	-	-	-	-	-	-	-	-	-	-	-	-	-	-	-	-	-	-	-	-	-	-	-	-	-	-

Aug	W	Th	F	Sa	Su	M	Tu	W	Th	F	Sa	Su	M	Tu	W	Th	F	Sa	Su	M	Tu	W	Th	F	Sa	Su	M	Tu	W	Th	F
2018	1	2	3	4	5	6	7	8	9	10	11	12	13	14	15	16	17	18	19	20	21	22	23	24	25	26	27	28	29	30	31
	-	-	-	-	-	-	-	-	-	-	-	-	-	-	-	-	-	-	-	-	-	-	-	-	-	-	-	-	-	-	-

Sep	Sa	Su	M	Tu	W	Th	F	Sa	Su	M	Tu	W	Th	F	Sa	Su	M	Tu	W	Th	F	Sa	Su							
2018	1	2	3	4	5	6	7	8	9	10	11	12	13	14	15	16	17	18	19	20	21	22	23	24	25	26	27	28	29	30
	-	-	-	-	-	-	-	-	-	-	-	-	-	-	-	-	-	-	-	-	-	-	-	-	-	-	-	-	-	-

Oct	M	Tu	W	Th	F	Sa	Su	M	Tu	W	Th	F	Sa	Su	M	Tu	W	Th	F	Sa	Su	M	Tu	W	Th	F	Sa	Su	M	Tu	W
2018	1	2	3	4	5	6	7	8	9	10	11	12	13	14	15	16	17	18	19	20	21	22	23	24	25	26	27	28	29	30	31
	-	-	-	-	-	-	-	-	-	-	-	-	-	-	-	-	-	-	-	-	-	-	-	-	-	-	-	-	-	-	-

Nov	Th	F	Sa	Su	M	Tu	W	Th	F	Sa	Su	M	Tu	W	Th	F	Sa	Su	M	Tu	W	Th	F							
2018	1	2	3	4	5	6	7	8	9	10	11	12	13	14	15	16	17	18	19	20	21	22	23	24	25	26	27	28	29	30
	-	-	-	-	-	-	-	-	-	-	-	-	-	-	-	-	-	-	-	-	-	-	-	-	-	-	-	-	-	-

Dec	Sa	Su	M	Tu	W	Th	F	Sa	Su	M	Tu	W	Th	F	Sa	Su	M	Tu	W	Th	F	Sa	Su	M							
2018	1	2	3	4	5	6	7	8	9	10	11	12	13	14	15	16	17	18	19	20	21	22	23	24	25	26	27	28	29	30	31
	-	-	-	-	-	-	-	-	-	-	-	-	-	-	-	-	-	-	-	-	-	-	-	-	-	-	-	-	-	-	

Mid season
 High season
 Festive specials
 Reserved



Gîte - Self Catering
 São João de Tarouca - Portugal
"Casa da Portaria"

9

[Book now](#)

Availability calendar - from : december 2018

Jan	Tu	W	Th	F	Sa	Su	M	Tu	W	Th	F	Sa	Su	M	Tu	W	Th	F	Sa	Su	M	Tu	W	Th	F	Sa	Su	M	Tu	W	Th
2019	1	2	3	4	5	6	7	8	9	10	11	12	13	14	15	16	17	18	19	20	21	22	23	24	25	26	27	28	29	30	31
	-	-	-	-	-	-	-	-	-	-	-	-	-	-	-	-	-	-	-	-	-	-	-	-	-	-	-	-	-	-	-

Feb	F	Sa	Su	M	Tu	W	Th	F	Sa	Su	M	Tu	W	Th	F	Sa	Su	M	Tu	W	Th								
2019	1	2	3	4	5	6	7	8	9	10	11	12	13	14	15	16	17	18	19	20	21	22	23	24	25	26	27	28	
	-	-	-	-	-	-	-	-	-	-	-	-	-	-	-	-	-	-	-	-	-	-	-	-	-	-	-	-	-

■ Mid season
 ■ High season
 ■ Festive specials
 ■ Reserved

[Month : Next >>](#)

Rental rates - Gîte - Self Catering - Country House - from 10 to 14 Person(s)

Rates	Night	Weekend	week	2 weeks	Month
■ Low season	£178* ↓ > 2	£445*	£800*	-	-
■ Mid season	-	-	£1067* (Saturday)	-	-
■ High season	-	-	£1423* (Saturday)	-	-
■ Festive specials	£2224* (Saturday) > 7	-	-	-	-

[↓ Reducing rates](#)
 (Check-in day)
 > Minimum Night

[Book now](#)

Booking conditions

- **Reservation**
 → Payment made upon reservation :
 25% of rental sum
 → Payment balance :
 on handing over the keys

Accepted methods of payment

- Bank transfer (wire) • PayPal • Cash

[▶ Book now](#)

[▶ Contact the owner](#)

Contact directly the property owners

www.ihacom.co.uk

Advert No.

16367

[>> Book now <<](#)

Contact

Spoken languages



* Converted at the rate indicated : €100 = \$123.46 = £88.94

Advert No. 16367

www.ihacom.co.uk



[>> HOLIDAY LETTINGS](#)

[BOOK DIRECT WITH THE OWNERS](#)