

Gîte - Self Catering Salema "Studio Salema"

Apartment with beautiful uninterrupted outdoor area and sea views! Walk to the beach/village square in 4 min it is located in the fishing village of Salema located between SAGRES and Lagos.



Gîte - Self Catering - Luxury Studio
Flat ground floor, separate entrance, in
a(an) Typical House single storey

Setting : seaside, suitable for a
relaxing break

Capacity : from 1 to 3 person(s)



Theme breaks
Valentine's Day

Salema - Algarve

Portugal

Advert No. 75312

www.ihacom.co.uk



>> HOLIDAY LETTINGS

BOOK DIRECT WITH THE OWNERS

Gîte - Self Catering



Gîte - Self Catering - Luxury Studio Flat ground floor, separate entrance, in a(an) Typical House single storey

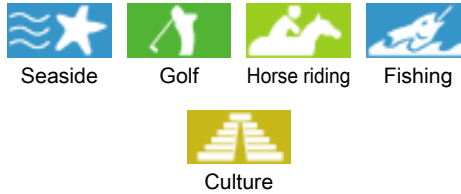
- **Ideal for couples, family**
- **View :** panoramic, dominant, sea/ocean, country side, village, fantastic sunset
- **Setting :** seaside, suitable for a relaxing break
- **Exposure :** South-west

" Here you find still really instead of slabs or beds stronghold. It is located in a quiet hillside location in the old centre of the village with panoramic views. Below the apartment, a very narrow village street (no traffic) directly on the beach and in the village, past a leads no mini supermarket, where the owner speaks also german and 3 beach bars/ restaurants. Everything, even the bus stop, is 3-5 min. The outdoor area of this apartment is separately with a gate to the finish, and has a shady Pergola so that Sun or shade can choose. Since the terrace facing South West has you can see breathtaking sunsets but the sun comes only from noon to TerrasseVor the House you have a private parking lot with retractable bollards, so that no one else there can park his car. "

Assets

- **Parking :**
Parking uncovered : 1 off road.
- **baby equipment :**
Baby chair

Surroundings & location



" If you land in Faro and have no car, driving from the airport by bus to Faro and take the train to Lagos, a beautiful track from there. Lagos, a bus goes to Salema. If you land in Lisbon and have no car a train from the airport to tunes and from there to Lagos then goes back with the bus to Salema. The trip takes about 4 1/2 hours and enjoy the magnificent views. Schedules are not available "

Leisure

- **Leisure activities less than 20 km / 12 miles :**

Bathing, pedalo, snorkelling, scuba diving, water skiing, surfing, windsurfing, sailing, kite surfing, canoeing, golf, tennis, squash, riding school, pathway, coastal/forest paths, hiking, climbing, rock climbing, mountain bike (path), parascending, parachuting, paragliding, boat trips, horse trekking, fishing, angling

Surroundings

- **Locality :**
Sandy beach 990'
Rocky beach 0.3mi.
Creek 0.3mi.
Public swimming pool 9mi.
Public tennis court
18 hole golf course 1.85mi.
Flying clubs
Windsurfing spots 0.3mi.
Surfing spots 0.3mi.
River 0.62mi.



Exterior facilities at guests disposal



outside



block of flats

Interior

- **Receive up to :**
from 1 to 3 person(s) (2 adults, 1 children)
- **Liveable floor area :**
650 Sq.ft.
- **Interior layout :**
Sleeping area, 1 bathroom, 1 WC, Kitchen Area, dining area
- **Sleeps - bed(s) :**
1 double bed(s), 2 sofa bed(s) 1 pers, 1 baby cot(s)
- **Guest facilities :**
T.V., hi-fi system, cable/satelite, internet access, wifi, wardrobe, hair dryer, mosquito nets, electric heating, Curtains, Double glazed, digipad entry system, digipad entry gates
- **Appliances :**
Crockery/cuttlery, kitchen utensils, cafetiere, electric coffee maker, electric espresso coffee maker, electric kettle, toaster, juicer, gas cooker, electric hobs, extractor hood, refridgerator, iron, ironing board

Exterior

- **Ground surface :**
2.5 acres
- **Outside accommodation :**
Terrace 183 Sq.ft., sundeck 160 Sq.ft., pergola 75 Sq.ft.
- **Outside setting :**
Enclosed grounds 2.5 acres
- **Outside amenities :**
BBQ, garden table(s), 3 garden seat(s), 2 sun recliner(s)



Guest facilities and furnishings

Services

- **Washing :**
Sheets, Towels, Linen, Beach towels supplement (+£3*), Blanket(s), Quilt(s), Pillows
- **House :**
Cleaning on departure, Garden/swimming pool maintenance, Parking
- **Personnel :**
Laundry (1 X / per week)

For your guidance

- **For your guidance**
Children welcome
Pets accepted under certain conditions (ask the owner)
Mobile telephone network coverage
Water : hot/cold
Electricity supply : mains



terrace

Photo album - 1



outside



Exterior facilities at guests disposal



block of flats

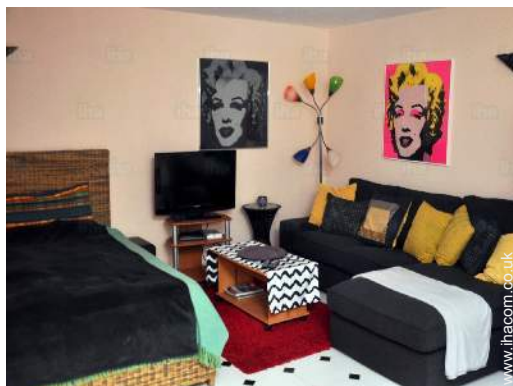


terrace



Guest facilities and furnishings

Photo album - 2



Interior layout



Interior layout



hi-fi system



Luxury Studio Flat



Kitchen Area



bathroom



Luxury Studio Flat



Leisure facilities

Photo album - 3



view over the sea



nearby



sandy beach



Seaside



Seaside



Seaside



General

[Theme breaks](#)


Valentine's Day

Location



Location & Access

" Directions key info apartment: the journey from Faro to Salema is approximately one hour. From the Estrada EN 125, turn left to Salema on and go to the end of the road. There a narrow goes off left after the phone column impasse, the Rua dos Pescadores. Right comes after the number of 14 large White House, below this House located on the street is your parking lot of this just for you. "

 GPS coordinates in degrees, minutes, seconds: Latitude 37°4'1"N - Longitude 8°49'18"W ([Dwelling](#))

Address

→ Rua dos Pescadores
8650 Salema

• Airport Faro

→ Faro, Algarve, Portugal
→ Distance : 56mi.
→ Time : 1h

- Sagres : (10,5mi.)
- Lagos : (11,2mi.)

Contact

Spoken languages



Gîte - Self Catering
 Salema - Portugal
 "Studio Salema"

[Book now](#)

Availability calendar - from : october 2020

Oct	Th	F	Sa	Su	M	Tu	W	Th	F	Sa	Su	M	Tu	W	Th	F	Sa	Su	M	Tu	W	Th	F	Sa	Su	M	Tu	W	Th	F	Sa
2020	1	2	3	4	5	6	7	8	9	10	11	12	13	14	15	16	17	18	19	20	21	22	23	24	25	26	27	28	29	30	31
																											-	-	-	-	-

Nov	Su	M	Tu	W	Th	F	Sa	Su	M	Tu	W	Th	F	Sa	Su	M	Tu	W	Th	F	Sa	Su	M	Tu	W	Th	F	Sa	Su	M
2020	1	2	3	4	5	6	7	8	9	10	11	12	13	14	15	16	17	18	19	20	21	22	23	24	25	26	27	28	29	30
	-	-	-	-	-	-	-	-	-	-	-	-	-	-	-	-	-	-	-	-	-	-	-	-	-	-	-	-	-	-

Dec	Tu	W	Th	F	Sa	Su	M	Tu	W	Th	F	Sa	Su	M	Tu	W	Th	F	Sa	Su	M	Tu	W	Th	F	Sa	Su	M	Tu	W	Th
2020	1	2	3	4	5	6	7	8	9	10	11	12	13	14	15	16	17	18	19	20	21	22	23	24	25	26	27	28	29	30	31
	-	-	-	-	-	-	-	-	-	-	-	-	-	-	-	-	-	-	-	-	-	-	-	-	-	-	-	-	-	-	-

Jan	F	Sa	Su	M	Tu	W	Th	F	Sa	Su	M	Tu	W	Th	F	Sa	Su	M	Tu	W	Th	F	Sa	Su	M	Tu	W	Th	F	Sa	Su
2021	1	2	3	4	5	6	7	8	9	10	11	12	13	14	15	16	17	18	19	20	21	22	23	24	25	26	27	28	29	30	31
	-	-	-	-	-	-	-	-	-	-	-	-	-	-	-	-	-	-	-	-	-	-	-	-	-	-	-	-	-	-	-

Feb	M	Tu	W	Th	F	Sa	Su	M	Tu	W	Th	F	Sa	Su	M	Tu	W	Th	F	Sa	Su							
2021	1	2	3	4	5	6	7	8	9	10	11	12	13	14	15	16	17	18	19	20	21	22	23	24	25	26	27	28
	-	-	-	-	-	-	-	-	-	-	-	-	-	-	-	-	-	-	-	-	-	-	-	-	-	-	-	-

Mar	M	Tu	W	Th	F	Sa	Su	M	Tu	W	Th	F	Sa	Su	M	Tu	W	Th	F	Sa	Su	M	Tu	W	Th	F	Sa	Su	M	Tu	W
2021	1	2	3	4	5	6	7	8	9	10	11	12	13	14	15	16	17	18	19	20	21	22	23	24	25	26	27	28	29	30	31
	-	-	-	-	-	-	-	-	-	-	-	-	-	-	-	-	-	-	-	-	-	-	-	-	-	-	-	-	-	-	-

Apr	Th	F	Sa	Su	M	Tu	W	Th	F	Sa	Su	M	Tu	W	Th	F	Sa	Su	M	Tu	W	Th	F	Sa	Su	M	Tu	W	Th	F
2021	1	2	3	4	5	6	7	8	9	10	11	12	13	14	15	16	17	18	19	20	21	22	23	24	25	26	27	28	29	30
	-	-	-	-	-	-	-	-	-	-	-	-	-	-	-	-	-	-	-	-	-	-	-	-	-	-	-	-	-	-

May	Sa	Su	M	Tu	W	Th	F	Sa	Su	M	Tu	W	Th	F	Sa	Su	M	Tu	W	Th	F	Sa	Su	M	Tu	W	Th	F	Sa	Su	M
2021	1	2	3	4	5	6	7	8	9	10	11	12	13	14	15	16	17	18	19	20	21	22	23	24	25	26	27	28	29	30	31
	-	-	-	-	-	-	-	-	-	-	-	-	-	-	-	-	-	-	-	-	-	-	-	-	-	-	-	-	-	-	-

June	Tu	W	Th	F	Sa	Su	M	Tu	W	Th	F	Sa	Su	M	Tu	W	Th	F	Sa	Su	M	Tu	W	Th	F	Sa	Su	M	Tu	W
2021	1	2	3	4	5	6	7	8	9	10	11	12	13	14	15	16	17	18	19	20	21	22	23	24	25	26	27	28	29	30
	-	-	-	-	-	-	-	-	-	-	-	-	-	-	-	-	-	-	-	-	-	-	-	-	-	-	-	-	-	-

Jul	Th	F	Sa	Su	M	Tu	W	Th	F	Sa	Su	M	Tu	W	Th	F	Sa	Su	M	Tu	W	Th	F	Sa	Su	M	Tu	W	Th	F	Sa
2021	1	2	3	4	5	6	7	8	9	10	11	12	13	14	15	16	17	18	19	20	21	22	23	24	25	26	27	28	29	30	31
	-	-	-	-	-	-	-	-	-	-	-	-	-	-	-	-	-	-	-	-	-	-	-	-	-	-	-	-	-	-	-

- Mid season
- Promotional period
- Reserved
- Low season
- High season



Gîte - Self Catering
 Salema - Portugal
"Studio Salema"

10
[Book now](#)

Availability calendar - from : july 2021

Aug	Su	M	Tu	W	Th	F	Sa	Su	M	Tu	W	Th	F	Sa	Su	M	Tu	W	Th	F	Sa	Su	M	Tu							
2021	1	2	3	4	5	6	7	8	9	10	11	12	13	14	15	16	17	18	19	20	21	22	23	24	25	26	27	28	29	30	31
	-	-	-	-	-	-	-	-	-	-	-	-	-	-	-	-	-	-	-	-	-	-	-	-	-	-	-	-	-	-	

Sep	W	Th	F	Sa	Su	M	Tu	W	Th	F	Sa	Su	M	Tu	W	Th	F	Sa	Su	M	Tu	W	Th							
2021	1	2	3	4	5	6	7	8	9	10	11	12	13	14	15	16	17	18	19	20	21	22	23	24	25	26	27	28	29	30
	-	-	-	-	-	-	-	-	-	-	-	-	-	-	-	-	-	-	-	-	-	-	-	-	-	-	-	-	-	-

- Mid season
- Promotional period
- Reserved
- Low season
- High season

[Month : Next >>](#)

Rental rates - Gîte - Self Catering - Luxury Studio Flat - from 1 to 3 Person(s)

Rates	Night	Weekend	week	2 weeks	Month
■ Low season	£77* ↓ > 6	-	£532*	£1365*	£1820*
■ Mid season	£59* ↓ > 6	-	£400*	£774*	£1047*
■ High season	£91* ↓ > 7	-	£637*	£1256*	-
■ Promotional period	£53* ↓ > 7	-	£369*	£710*	£819*

↓ Reducing rates > Minimum Night

[Book now](#)

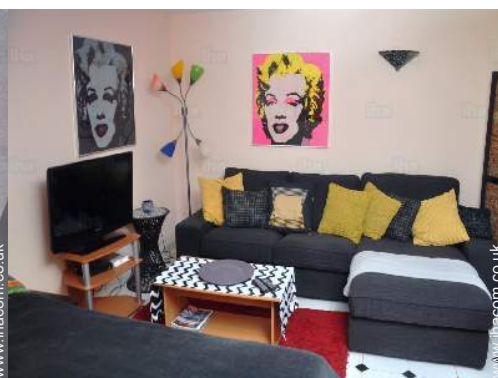




block of flats



terrace



Guest facilities and furnishings



outside



Exterior facilities at guests disposal

Booking conditions

- **Reservation**

- Payment made upon reservation : 30% of rental sum
- Payment balance : 1 month before the stay

- **rentals**

- Service charges included
- Cleaning charge on departure included

Accepted methods of payment

- Bank transfer (wire) • PayPal • Cash

[▶ Book now](#)

[▶ Contact the owner](#)

Contact directly the property owners

www.ihacom.co.uk

Advert No.

75312

[>> Book now <<](#)

Contact

Spoken languages



* Converted at the rate indicated : €100 = \$110 = £91

Advert No. 75312

www.ihacom.co.uk

