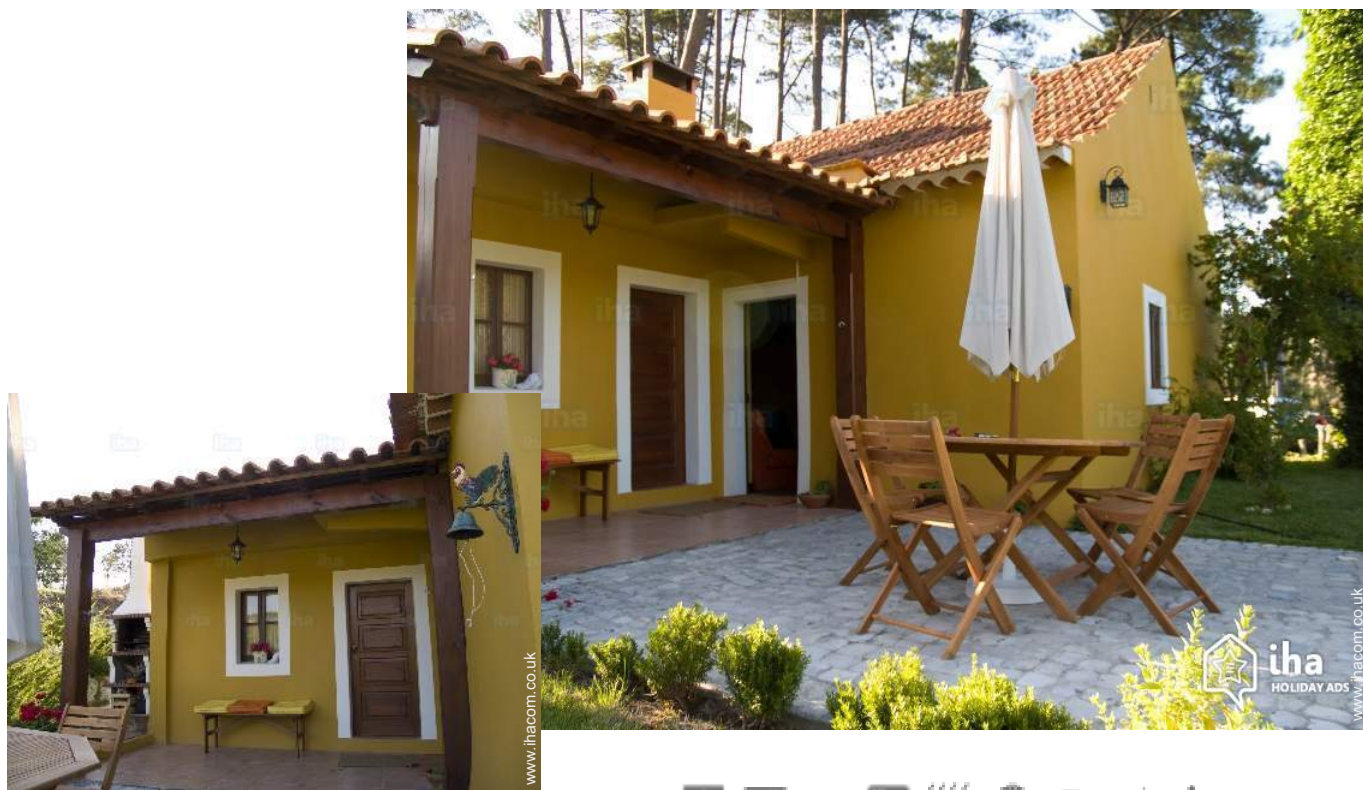


Gîte - Self Catering Ribeira do Pereiro "A Casa do Ribeiro"

This is a traditional Portuguese country house, ideal for rest to the sound of nature. Nestled between the magnificent historical monuments and fantastic beaches that exist here so close! Ideal geographic location.
Welcome.



Gîte - Self Catering - Charming Cottage, detached, single storey, separate entrance, in a(an) Charming Property

Setting : country setting, calm

Capacity : from 1 to 4 person(s)

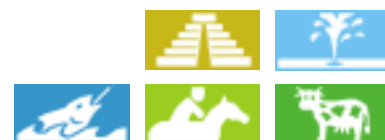
Bedroom(s) : 2

Room(s) : 5

Ribeira do Pereiro - District of Leiria - Centro Region (Portugal)
Portugal

Advert No. 77366

www.ihacom.co.uk



Gîte - Self Catering



Gîte - Self Catering - Charming Cottage, detached, single storey, separate entrance, in a(an) Charming Property

- **Ideal for all age groups, family**
- **View :** unobscured, country side, garden/park, Vineyards, forest, river
- **Setting :** country setting, calm
- **Exposure :** East

" This country house has 5 divisions, two bedrooms, a living room, a bathroom and a kitchen. Outside, there are a Barbecue, two lounge chairs, a hammock and tables, also swing for children. It is surrounded by a garden and in front of the House there's a vineyard and small streams. The House has washing machine, espresso coffee machine, iron and ironing board. "

Assets

- **Parking :**
Parking uncovered : 3 reserved bay.
- **Advantages :**
2 bike(s), 2 snorkelling equipment



façade

Surroundings & location



Countryside Horse riding Fishing Spa



Culture

" This is a traditional Portuguese country house, picturesque. Very well located to visit Alcobaca, Nazaré, Óbidos, Tomar, Fatima, Batalha, natural Park, Peniche, Leiria, Coimbra, Lisbon and Sintra, right next here. The food here is fantastic, you can go to the town of Nazaré to have some grilled sardines on the O Pires restaurant or go to Peniche eat the famous Caldeirada de Peixe (fish stew) or quality seafood on a nearby beach together with Portuguese wines of the region. From 2 to 7 km, you will find about 10 typical Portuguese cuisine restaurants!! "

Leisure

- **Leisure activities less than 20 km / 12 miles :**

Bathing, pedalo, snorkelling, scuba diving, jet ski, surfing, kite surfing, canoeing, golf, tennis, riding school, pathway, coastal/forest paths, hiking, mountain bike (path), parachuting, hang-gliding, paragliding, boat trips, horse trekking, mini-golf, ATV/Quad Bike, ten-pin bowling, volleyball, paintball, hunting, fishing, deep-sea angling, angling, spear fishing

- **Supervised :**

Dive school, riding school

- **Attractions and relaxation :**

Bar/pub, discotheque, restaurant, cinema, karaoke, park and garden, leisure park, nature reserve, exhibition centre, historical site, museum, antiques & bric-a-brac, local craftshop, cellar and wine tasting, racecourse, natural spring baths, thermal baths, thalassotherapy centre, sauna, health farm, beauticians, Bio farm

Surroundings

- **Locality :**

Sea/ocean 6mi.
Sandy beach 6mi.
Shingle beach 0.93mi.
Rocky beach 0.93mi.
Public swimming pool 3mi.
Public tennis court 4.5mi.
9 hole golf course 9mi.
Surfing spots 6mi.
River rapids 0.5mi.
Waterfall 0.5mi.
River <165'
Lake 0.5mi.
Forest <165'
Mountain range 0.5mi.
Via ferrata-alpinism 1.25mi.

- **Amenities :**

Village centre 660'
Bike/mountain bike hire
Car rental
Boat rental 6mi.
Scuba diving material hire 6mi.
Breadshop 0.62mi.
Caterer 0.93mi.
Local shops 0.93mi.
Supermarket 0.93mi.
High class retailers 6mi.
Hairdressing salon 1.25mi.
Internet cafe 0.93mi.
Post office 0.93mi.
Bank 4.5mi.
Cash point 1.25mi.
Chemist 1.85mi.
Doctor 1.25mi.
Nurse 1.5mi.
Hospital 4.5mi.
Dispensing clinic 1.25mi.



sandy beach



easterly view



living room

Interior

- **Receive up to :**

from 1 to 4 person(s) (4 adults)

- **Liveable floor area :**

700 Sq.ft.

- **Interior layout :**

5 Room(s), 2 bedroom(s), 1 bathroom, 1 shower room, 1 WC, living room 110 Sq.ft., separate kitchen, cosy nook, tv room, veranda

- **Sleeps - bed(s) :**

2 double bed(s), 1 sofa bed(s) 1 pers

- **Guest facilities :**

Fireplace, T.V., hi-fi system, videoplayer, DVD player, book collection, film collection, t.v points, cupboard, Hanging wardrobe, hair dryer, electric heating, solid fuel burning stoves, fire alarm

- **Appliances :**

Crockery/cutlery, kitchen utensils, cafetiere, electric coffee maker, electric espresso coffee maker, electric kettle, toaster, juicer, meat grill, gas cooker, oven, micro-wave oven, extractor hood, refridgerator, freezer, washing machine, iron, ironing board

Exterior

- **Ground surface :**

2 acres

- **Outside accommodation :**

Terrace 215 Sq.ft.

- **Outside setting :**

Private courtyard 110 Sq.ft., enclosed grounds 2,150 Sq.ft., garden 2,150 Sq.ft., lawn, woods 1.75 acre, pinewood 1.5 acre, kitchen garden 85 Sq.ft., stream

- **Outside amenities :**

BBQ, garden table(s), 6 garden seat(s), parasol, 2 chaise(s) longue(s), 1 hammock (s), climbing frame, sand pit



façade

Services

- **Washing :**

Sheets, Towels, Linen, Blanket(s), Pillows

- **House :**

Airport transfers supplement

- **Personnel :**

Guide supplement

For your guidance

- **For your guidance**

Children welcome

Pets accepted

Present on site : farm animals, wild animals

Mobile telephone network coverage,

personal transport advisable

Water : hot/cold

Local voltage supply : 220-240V / 50Hz

- **Handicapped people welcome**

Wheelchair access

Fitted out for the disabled : mobility, hard of hearing



the property

Photo album - 1



façade



easterly view



sandy beach



living room



the property

Photo album - 2



façade



bedroom



Interior layout



kitchen



bedroom



General



kitchen

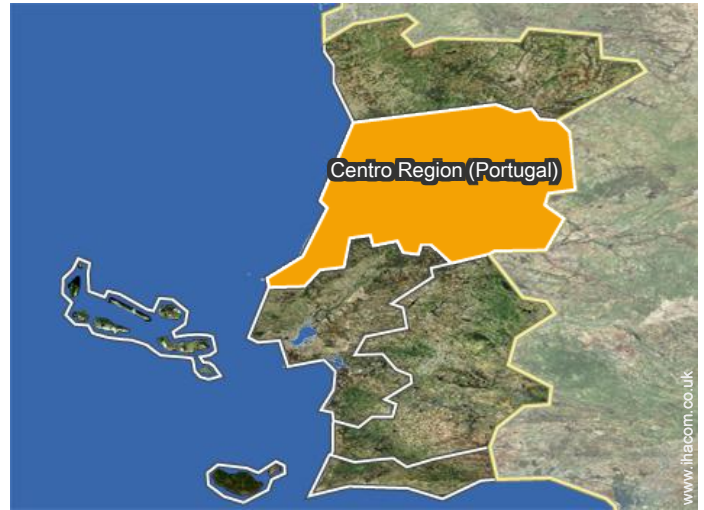
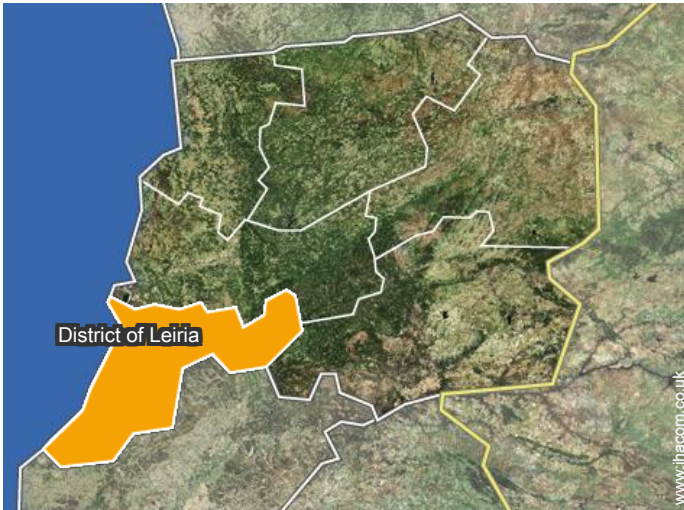


WC



general floor plan

Location



Location & Access

" From Lisbon you should take the A8 Motorway, take exit 23 (Pataias), then turn left direction Alpedriz and then follow towards the village of Ribeira do Pereiro. If you come from Leiria, you can reach via Marinha Grande direction Pataias, Alpedriz, Ribeira do Pereiro, or if you prefer, take the Highway A8 and exit at the same exit number 23 (Pataias). "



GPS coordinates in degrees, minutes, seconds: Latitude 39°37'24"N - Longitude 8°58'15"W ([Dwelling](#))

Address

→ Rua do Moinho 2
2460 Ribeira do Pereiro

• Motorway (junction) A8

→ Alpedriz, District of Leiria, Centro Region (Portugal), Portugal
→ Distance : 3mi.
→ Time : 10'

- Lisbon : (77,5mi.)
- Nazaré : (7,5mi.)
- Batalha : (11,8mi.)

Contact

Spoken languages



Gîte - Self Catering
Ribeira do Pereiro - Portugal
"A Casa do Ribeiro"

Availability calendar - from : september 2019

Sep	Su	M	Tu	W	Th	F	Sa	Su	M	Tu	W	Th	F	Sa	Su	M	Tu	W	Th	F	Sa	Su	M							
2019	1	2	3	4	5	6	7	8	9	10	11	12	13	14	15	16	17	18	19	20	21	22	23	24	25	26	27	28	29	30

Oct	Tu	W	Th	F	Sa	Su	M	Tu	W	Th	F	Sa	Su	M	Tu	W	Th	F	Sa	Su	M	Tu	W	Th							
2019	1	2	3	4	5	6	7	8	9	10	11	12	13	14	15	16	17	18	19	20	21	22	23	24	25	26	27	28	29	30	31
	-	-	-	-	-	-	-	-	-	-	-	-	-	-	-	-	-	-	-	-	-	-	-	-	-	-	-	-	-	-	

Nov	F	Sa	Su	M	Tu	W	Th	F	Sa	Su	M	Tu	W	Th	F	Sa	Su	M	Tu	W	Th	F	Sa							
2019	1	2	3	4	5	6	7	8	9	10	11	12	13	14	15	16	17	18	19	20	21	22	23	24	25	26	27	28	29	30
	-	-	-	-	-	-	-	-	-	-	-	-	-	-	-	-	-	-	-	-	-	-	-	-	-	-	-	-	-	-

Dec	Su	M	Tu	W	Th	F	Sa	Su	M	Tu	W	Th	F	Sa	Su	M	Tu	W	Th	F	Sa	Su	M	Tu							
2019	1	2	3	4	5	6	7	8	9	10	11	12	13	14	15	16	17	18	19	20	21	22	23	24	25	26	27	28	29	30	31
	-	-	-	-	-	-	-	-	-	-	-	-	-	-	-	-	-	-	-	-	-	-	-	-	-	-	-	-	-	-	

Jan	W	Th	F	Sa	Su	M	Tu	W	Th	F	Sa	Su	M	Tu	W	Th	F	Sa	Su	M	Tu	W	Th	F							
2020	1	2	3	4	5	6	7	8	9	10	11	12	13	14	15	16	17	18	19	20	21	22	23	24	25	26	27	28	29	30	31
	-	-	-	-	-	-	-	-	-	-	-	-	-	-	-	-	-	-	-	-	-	-	-	-	-	-	-	-	-	-	

Feb	Sa	Su	M	Tu	W	Th	F	Sa	Su	M	Tu	W	Th	F	Sa	Su	M	Tu	W	Th	F	Sa							
2020	1	2	3	4	5	6	7	8	9	10	11	12	13	14	15	16	17	18	19	20	21	22	23	24	25	26	27	28	29
	-	-	-	-	-	-	-	-	-	-	-	-	-	-	-	-	-	-	-	-	-	-	-	-	-	-	-	-	-

Mar	Su	M	Tu	W	Th	F	Sa	Su	M	Tu	W	Th	F	Sa	Su	M	Tu	W	Th	F	Sa	Su	M	Tu							
2020	1	2	3	4	5	6	7	8	9	10	11	12	13	14	15	16	17	18	19	20	21	22	23	24	25	26	27	28	29	30	31
	-	-	-	-	-	-	-	-	-	-	-	-	-	-	-	-	-	-	-	-	-	-	-	-	-	-	-	-	-	-	

Apr	W	Th	F	Sa	Su	M	Tu	W	Th	F	Sa	Su	M	Tu	W	Th	F	Sa	Su	M	Tu	W	Th							
2020	1	2	3	4	5	6	7	8	9	10	11	12	13	14	15	16	17	18	19	20	21	22	23	24	25	26	27	28	29	30
	-	-	-	-	-	-	-	-	-	-	-	-	-	-	-	-	-	-	-	-	-	-	-	-	-	-	-	-	-	-

May	F	Sa	Su	M	Tu	W	Th	F	Sa	Su	M	Tu	W	Th	F	Sa	Su	M	Tu	W	Th	F	Sa	Su							
2020	1	2	3	4	5	6	7	8	9	10	11	12	13	14	15	16	17	18	19	20	21	22	23	24	25	26	27	28	29	30	31
	-	-	-	-	-	-	-	-	-	-	-	-	-	-	-	-	-	-	-	-	-	-	-	-	-	-	-	-	-	-	

June	M	Tu	W	Th	F	Sa	Su	M	Tu	W	Th	F	Sa	Su	M	Tu	W	Th	F	Sa	Su	M	Tu							
2020	1	2	3	4	5	6	7	8	9	10	11	12	13	14	15	16	17	18	19	20	21	22	23	24	25	26	27	28	29	30
	-	-	-	-	-	-	-	-	-	-	-	-	-	-	-	-	-	-	-	-	-	-	-	-	-	-	-	-	-	-

 Reserved

Gîte - Self Catering
District of Leiria - Centro Region (Portugal)
"A Casa do Ribeiro"

8

[Book now](#)

Availability calendar - from : june 2020

Jul	W	Th	F	Sa	Su	M	Tu	W	Th	F	Sa	Su	M	Tu	W	Th	F	Sa	Su	M	Tu	W	Th	F							
2020	1	2	3	4	5	6	7	8	9	10	11	12	13	14	15	16	17	18	19	20	21	22	23	24	25	26	27	28	29	30	31

Aug	Sa	Su	M	Tu	W	Th	F	Sa	Su	M	Tu	W	Th	F	Sa	Su	M	Tu	W	Th	F	Sa	Su	M							
2020	1	2	3	4	5	6	7	8	9	10	11	12	13	14	15	16	17	18	19	20	21	22	23	24	25	26	27	28	29	30	31

Reserved

[Month : Next >>](#)

Rental rates - Gîte - Self Catering - Charming Cottage - from 1 to 4 Person(s)

Rates	Night	Weekend	week	2 weeks	Month
<input type="checkbox"/> Low season	£46*	£137*	£228*	£455*	-
<input type="checkbox"/> Mid season	-	£137*	£273*	£546*	-
<input type="checkbox"/> High season	-	-	£410*	£819*	-

[Book now](#)

Booking conditions

• Reservation

→ Payment made upon reservation : 50% of rental sum
→ Payment balance : on handing over the keys

• rentals

→ Service charges included
→ Day tax included
→ Cleaning charge on departure included
→ Anticipated supplement for :
- supplementary bed(s)
- firewood

Accepted methods of payment

• International Money Order • Bank transfer (wire) • PayPal • Cash

[▶ Book now](#)

[▶ Contact the owner](#)

Contact directly the property owners

www.ihacom.co.uk

Advert No.

77366

[>> Book now <<](#)

Contact

Spoken languages



* Converted at the rate indicated : €100 = \$110 = £91

Advert No. 77366

www.ihacom.co.uk



[>> HOLIDAY LETTINGS](#)

BOOK DIRECT WITH THE OWNERS