

# Gîte - Self Catering Pointe-Noire "Vaitëa"



Gîte - Self Catering - Villa, detached, single storey, separate entrance, in a(an) Charming Property

Setting : heavenly, tropical

Capacity : from 1 to 6 person(s)

Bedroom(s) : 3

Room(s) : 4

Pointe-Noire - Island of Basse-Terre

Guadeloupe

Reservation : +590 (0) 590951928 (Guadeloupe)

Advert No. 45596

www.iHACOM.co.uk



>> HOLIDAY LETTINGS

BOOK DIRECT WITH THE OWNERS

## Gîte - Self Catering



Gîte - Self Catering - Villa, detached, single storey, separate entrance, in a(an) Charming Property

- **Ideal for all age groups**
- **View :** panoramic, dominant, sea/ocean, swimming pool, fantastic sunset, nightlights
- **Setting :** heavenly, tropical

## Assets

- **Swimming pool :**  
Private swimming-pool, rectangular, cascading, illuminated, steps in, child secure
- **Parking :**  
Covered parking : 1 carport. Parking uncovered : off road.
- **baby equipment :**  
Baby chair, baby potty, pushchair

## Surroundings & location



Seaside



Horse riding



Fishing

### Leisure

- **Leisure activities less than 20 km / 12 miles :**

Bathing, snorkelling, scuba diving, jet ski, sailing, canoeing, canyoning, riding school, pathway, coastal/forest paths, hiking, boat trips, horse trekking, acrobatics, fishing, deep-sea angling, angling, spear fishing

- **Supervised :**

Dive school, riding school

- **Attractions and relaxation :**

Restaurant, park and garden, leisure park, zoo/animal park, nature reserve, historical site, museum, local craftshop, natural spring baths

### Surroundings

- **Locality :**

Sea/ocean 660'  
Sandy beach 0.5mi.  
Shingle beach 0.5mi.  
Nudist beach 2.5mi.  
18 hole golf course >31mi.  
Flying clubs 25mi.  
Surfing spots 31mi.  
Watersports centre 25mi.  
Waterfall 0.93mi.  
River 0.5mi.  
Mountain range 25mi.  
Marina 12.5mi.

- **Amenities :**

Village centre 2.5mi.  
Bus stop / bus station 330'  
Car rental  
Boat rental  
Scuba diving material hire 0.5mi.  
Household linens for hire/laundry services 2.5mi.  
Breadshop 0.5mi.  
Local shops 0.93mi.  
Supermarket 4.5mi.  
Post office 2.5mi.  
Bank 2.5mi.  
Cash point 2.5mi.  
Chemist 2.5mi.  
Doctor 2.5mi.  
Nurse 2.5mi.  
Hospital 9mi.



Advert No. 45596

[www.ihacom.co.uk](http://www.ihacom.co.uk)





### Interior

- **Receive up to :**  
from 1 to 6 person(s) (6 adults)
- **Liveable floor area :**  
1,300 Sq.ft.
- **Interior layout :**  
4 Room(s), 3 bedroom(s), 1 bathroom, 1 shower room, 2 WC, living room, sitting room, large american style kitchen, dining room, tv room, dressing room, reception hall, pantry
- **Sleeps - bed(s) :**  
3 double bed(s), 1 baby cot(s)
- **Guest facilities :**  
T.V., t.v points, cable/satelite, wifi, wardrobe, cupboard, Hanging wardrobe, hair dryer, partly air conditioned, ceiling paddle fan, Rolling shutters, electric shutters
- **Appliances :**  
Crockery/cuttlery, kitchen utensils, electric coffee maker, electric kettle, toaster, juicer, food processor, gas cooker, oven, microwave oven, extractor hood, refridgerator, freezer, dish washer, washing machine, vacuum cleaner, iron, ironing board

### Exterior

- **Ground surface :**  
0.25 acre.
- **Outside accommodation :**  
Terrace, covered terrace, sundeck
- **Outside setting :**  
Enclosed grounds, tropical garden
- **Outside amenities :**  
Sun recliner(s)



### Services

- **Washing :**  
Sheets, Towels, Linen, Blanket(s), Pillows
- **House :**  
Cleaning supplement (+£72\*), Garden/swimming pool maintenance, Parking, Airport transfers supplement (+£54\*)
- **Personnel :**  
Chauffeur supplement, Massage supplement, Guide supplement
- **Restauration :**  
Locally produced meals supplement (+£18\*)

### For your guidance

- **For your guidance**  
Children welcome  
Pets accepted under certain conditions (ask the owner)  
Mobile telephone network coverage, personal transport advisable  
Water : hot/cold  
Electricity supply : mains



Gîte - Self Catering  
Island of Basse-Terre - Guadeloupe  
"Vaitëa"

4

[Book now](#)

Photo album - 1



Advert No. 45596

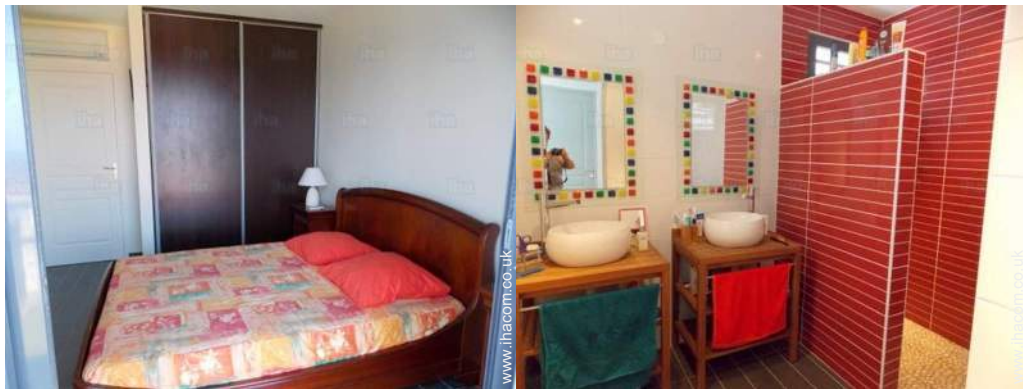
[www.ihacom.co.uk](http://www.ihacom.co.uk)



[>> HOLIDAY LETTINGS](#)

[BOOK DIRECT WITH THE OWNERS](#)

Photo album - 2



## Location



## Location & Access



GPS coordinates in degrees, minutes, seconds: Latitude 16°16'22"N - Longitude 61°47'35"W ([Dwelling](#))

### Address

→ 535, route de Monchéri  
97116 Pointe-Noire

### • Airport Guadeloupe Pôle Caraïbes

→ Pointe-à-Pitre, Grande-Terre,  
Guadeloupe  
→ Time : 45'

### • Sea port Pointe à Pitre

→ Pointe-à-Pitre, Grande-Terre,  
Guadeloupe  
→ Time : 45'

### • Sea port Trois Rivières

→ Trois Rivières (Basse-Terre), Island of  
Basse-Terre, Guadeloupe  
→ Time : 1h

• Deshaies : (10,5mi.)

• Basse-Terre : (23,6mi.)

• Pointe-à-Pitre : (25mi.)

## Contact

Spoken  
languages



Gîte - Self Catering  
Island of Basse-Terre - Pointe-Noire  
"Vaitëa"

[Book now](#)

Availability calendar - from : january 2018

Jan	M	Tu	W	Th	F	Sa	Su	M	Tu	W	Th	F	Sa	Su	M	Tu	W	Th	F	Sa	Su	M	Tu	W							
2018	1	2	3	4	5	6	7	8	9	10	11	12	13	14	15	16	17	18	19	20	21	22	23	24	25	26	27	28	29	30	31

Feb	Th	F	Sa	Su	M	Tu	W	Th	F	Sa	Su	M	Tu	W	Th	F	Sa	Su	M	Tu	W								
2018	1	2	3	4	5	6	7	8	9	10	11	12	13	14	15	16	17	18	19	20	21	22	23	24	25	26	27	28	
	-	-	-	-	-	-	-	-	-	-	-	-	-	-	-	-	-	-	-	-	-	-	-	-	-	-	-	-	-

Mar	Th	F	Sa	Su	M	Tu	W	Th	F	Sa	Su	M	Tu	W	Th	F	Sa	Su	M	Tu	W	Th	F	Sa							
2018	1	2	3	4	5	6	7	8	9	10	11	12	13	14	15	16	17	18	19	20	21	22	23	24	25	26	27	28	29	30	31
	-	-	-	-	-	-	-	-	-	-	-	-	-	-	-	-	-	-	-	-	-	-	-	-	-	-	-	-	-	-	

Apr	Su	M	Tu	W	Th	F	Sa	Su	M	Tu	W	Th	F	Sa	Su	M	Tu	W	Th	F	Sa	Su	M							
2018	1	2	3	4	5	6	7	8	9	10	11	12	13	14	15	16	17	18	19	20	21	22	23	24	25	26	27	28	29	30
	-	-	-	-	-	-	-	-	-	-	-	-	-	-	-	-	-	-	-	-	-	-	-	-	-	-	-	-	-	-

May	Tu	W	Th	F	Sa	Su	M	Tu	W	Th	F	Sa	Su	M	Tu	W	Th	F	Sa	Su	M	Tu	W	Th							
2018	1	2	3	4	5	6	7	8	9	10	11	12	13	14	15	16	17	18	19	20	21	22	23	24	25	26	27	28	29	30	31
	-	-	-	-	-	-	-	-	-	-	-	-	-	-	-	-	-	-	-	-	-	-	-	-	-	-	-	-	-	-	

June	F	Sa	Su	M	Tu	W	Th	F	Sa	Su	M	Tu	W	Th	F	Sa	Su	M	Tu	W	Th	F	Sa							
2018	1	2	3	4	5	6	7	8	9	10	11	12	13	14	15	16	17	18	19	20	21	22	23	24	25	26	27	28	29	30
	-	-	-	-	-	-	-	-	-	-	-	-	-	-	-	-	-	-	-	-	-	-	-	-	-	-	-	-	-	-

Jul	Su	M	Tu	W	Th	F	Sa	Su	M	Tu	W	Th	F	Sa	Su	M	Tu	W	Th	F	Sa	Su	M	Tu							
2018	1	2	3	4	5	6	7	8	9	10	11	12	13	14	15	16	17	18	19	20	21	22	23	24	25	26	27	28	29	30	31
	-	-	-	-	-	-	-	-	-	-	-	-	-	-	-	-	-	-	-	-	-	-	-	-	-	-	-	-	-	-	

Aug	W	Th	F	Sa	Su	M	Tu	W	Th	F	Sa	Su	M	Tu	W	Th	F	Sa	Su	M	Tu	W	Th	F							
2018	1	2	3	4	5	6	7	8	9	10	11	12	13	14	15	16	17	18	19	20	21	22	23	24	25	26	27	28	29	30	31
	-	-	-	-	-	-	-	-	-	-	-	-	-	-	-	-	-	-	-	-	-	-	-	-	-	-	-	-	-	-	

Sep	Sa	Su	M	Tu	W	Th	F	Sa	Su	M	Tu	W	Th	F	Sa	Su	M	Tu	W	Th	F	Sa	Su							
2018	1	2	3	4	5	6	7	8	9	10	11	12	13	14	15	16	17	18	19	20	21	22	23	24	25	26	27	28	29	30
	-	-	-	-	-	-	-	-	-	-	-	-	-	-	-	-	-	-	-	-	-	-	-	-	-	-	-	-	-	-

Oct	M	Tu	W	Th	F	Sa	Su	M	Tu	W	Th	F	Sa	Su	M	Tu	W	Th	F	Sa	Su	M	Tu	W							
2018	1	2	3	4	5	6	7	8	9	10	11	12	13	14	15	16	17	18	19	20	21	22	23	24	25	26	27	28	29	30	31
	-	-	-	-	-	-	-	-	-	-	-	-	-	-	-	-	-	-	-	-	-	-	-	-	-	-	-	-	-	-	

Reserved
  Mid season
  Low season



Gîte - Self Catering  
Island of Basse-Terre - Guadeloupe  
"Vaitëa"

8

[Book now](#)

Availability calendar - from : october 2018

Nov	Th	F	Sa	Su	M	Tu	W	Th	F	Sa	Su	M	Tu	W	Th	F	Sa	Su	M	Tu	W	Th	F	Sa	Su	M	Tu	W	Th	F
2018	1	2	3	4	5	6	7	8	9	10	11	12	13	14	15	16	17	18	19	20	21	22	23	24	25	26	27	28	29	30
	-	-	-	-	-	-	-	-	-	-	-	-	-	-	-	-	-	-	-	-	-	-	-	-	-	-	-	-	-	-

Dec	Sa	Su	M	Tu	W	Th	F	Sa	Su	M	Tu	W	Th	F	Sa	Su	M	Tu	W	Th	F	Sa	Su	M							
2018	1	2	3	4	5	6	7	8	9	10	11	12	13	14	15	16	17	18	19	20	21	22	23	24	25	26	27	28	29	30	31
	-	-	-	-	-	-	-	-	-	-	-	-	-	-	-	-	-	-	-	-	-	-	-	-	-	-	-	-	-	-	



Reserved



Mid season



Low season

[Month : Next >>](#)

Rental rates - Gîte - Self Catering - Villa - from 1 to 6 Person(s)

Rates	Night	Weekend	week	2 weeks	Month
Low season	-	-	£1165*	£2213*	£3494*
Mid season	-	-	£1398*	£2643*	£4121*
High season	-	-	£1747*	£3136*	£5375*

[Book now](#)

Booking conditions

• Reservation

- Payment made upon reservation : 20% of rental sum
- Payment balance : on handing over the keys
- Deposit required : £717\*

• rentals

- Service charges included
- Day tax included
- Cleaning charge on departure included

[▶ Book now](#)

[▶ Contact the owner](#)

Accepted methods of payment

- Visa/Delta/Electron
- Bank transfer (wire)
- MasterCard/EuroCard
- American Express
- Cheque
- PayPal
- Cash
- Holiday voucher

Contact directly the property owners

[www.ihacom.co.uk](http://www.ihacom.co.uk)

Advert No.

45596

[>> Book now <<](#)

Contact

Spoken languages



\* Converted at the rate indicated : €100 = \$117.29 = £89.59

Advert No. 45596

[www.ihacom.co.uk](http://www.ihacom.co.uk)



[>> HOLIDAY LETTINGS](#)

BOOK DIRECT WITH THE OWNERS