

Gîte - Self Catering Ornans "Chez Mamie Maxeline"

House nice, close to the city centre, cultural activities, of the campaign.



Gîte - Self Catering - Town House,
detached, single storey in a(an) Private
property

Setting : picturesque, suitable for a
relaxing break

Capacity : from 4 to 6 person(s)
Bedroom(s) : 2
Room(s) : 4

Ornans - Doubs (25) - Franche-Comté

France

Reservation : +33 (0) 381624957 (France)



Advert No. 16993

www.ihacom.co.uk



>> HOLIDAY LETTINGS

BOOK DIRECT WITH THE OWNERS

Gîte - Self Catering



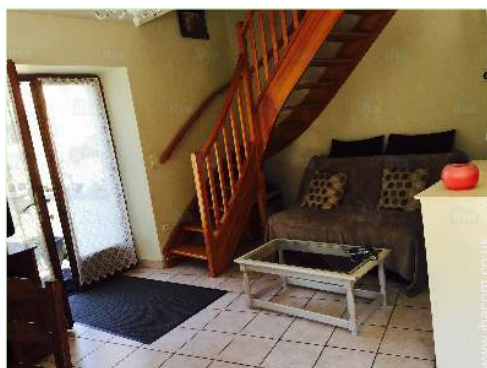
Gîte - Self Catering - Town House, detached, single storey in a(an) Private property

- **Ideal for all age groups, family**
- **View :** mountain, country side, garden/park, forest, river
- **Setting :** picturesque, suitable for a relaxing break
- **Exposure :** South

" Your accommodation on 2 floors, consists of 2 double rooms, a fully equipped kitchen (plates, dishwasher, fridge, dishwasher, washing machine, oven, microwave oven, a stay / trade shows TV, 1 sofa, bathroom and 2 Toilets.) Wifi connection, phone, terrace on the ground floor + swing, possibility access bed umbrella and Chair baby, pets allowed (upon agreement of the owner.). Possibility garage closed for bikes, canoes, etc... If necessary depending on availability. "

Assets

- **baby equipment :**
Baby chair, baby changer, baby bath, playpen, pushchair



living room

Surroundings & location



Countryside



Fishing

" The rental price includes charges (water + electricity + heating) it remains to add tourist tax. On-site: you are 5 minutes walk from the Museum of Courbet and all services (restaurants, bakery, shops, pharmacies, doctors, press/tobacco...), hiking, 3 mountain bike at disposal, and nearby, pool water, climbing, canoeing, Museum of homes Franche, Park Dino zoo, Citadel at BESANÇON, Château de Joux, Arc and can... Furthermore, Ornans is located half an hour from PONTARLIER, SALINS LES BAINS, and an hour of METABIEF ski resorts. "

Leisure

- **Leisure activities less than 20 km / 12 miles :**

Cross-country skiing, bathing, canoeing, canyoning, tennis, pathway, coastal/forest paths, hiking, mountain bike (path), acrobatics, fishing, pétanque pitch

Surroundings

- **Locality :**
River rapids 9mi.
Waterfall 9mi.
Cliff 0.62mi.
River 330'
Lake 31mi.
Forest 330'
Mountain range 31mi.
Via ferrata-alpinism 0.62mi.



bedroom



living room



bedroom

Interior

- **Receive up to :**
from 4 to 6 person(s) (4 adults, 2 children)
- **Liveable floor area :**
860 Sq.ft.
- **Interior layout :**
4 Room(s), 2 bedroom(s), 1 bathroom, 1 shower room, 2 WC, living room 430 Sq.ft.
- **Sleeps - bed(s) :**
1 double bed(s), 1 sofa bed(s) 2 pers, 2 twin beds (standard), 1 folding bed(s) 1 pers, 1 baby cot(s)
- **Guest facilities :**
T.V., hi-fi system, DVD player, book collection, t.v points, telephone, internet access, wifi, wardrobe, hair dryer, mobile cool air fan, ceiling paddle fan, central heating, Curtains, Double glazed
- **Appliances :**
Crockery/cutlery, cafetiere, electric coffee maker, electric kettle, toaster, juicer, food processor, electric hobs, oven, micro-wave oven, extractor hood, refridgerator, freezer, dish washer, washing machine, clothes dryer, vacuum cleaner, iron, ironing board

Exterior

- **Ground surface :**
2,150 Sq.ft.
- **Outside accommodation :**
Terrace, pergola
- **Outside setting :**
Private courtyard, enclosed grounds, garden, lawn, orchard, river
- **Outside amenities :**
Gas BBQ, garden table(s), 6 garden seat(s), arbour, parasol, garden seated area, 2 chaise(s) longue(s), 4 sun recliner(s), climbing frame



bathroom

Services

- **Washing :**
Sheets, Towels, Linen, Blanket(s), Quilt(s), Pillows

For your guidance

- **For your guidance**
Children welcome
Pets accepted under certain conditions (ask the owner)
Present on site : pets
Non smoking rental, mobile telephone network coverage, personal transport advisable
Water : hot/cold
Local voltage supply : 220-240V / 50Hz
Electricity supply : mains



Kitchen Area

Photo album - 1



living room



living room



bedroom



bedroom



Kitchen Area

Photo album - 2



bathroom



shower room



Outside amenities



private courtyard



climbing frame



Exterior amenities at guests disposal




gas BBQ

Location



Location & Access

" 25 kilometres to the South East of Besançon. Located at ORNANS, capital of the upper Valley of the Loue. Our village house 5 minutes from the city center, at 100 meters from the fir trees, welcomes you for nature, sports and cultural holidays. "

 GPS coordinates in degrees, minutes, seconds: Latitude 47°6'15"N - Longitude 6° 8'40"E ([Dwelling](#))

Address

→ 8, rue du Vieux Seult
25290 Ornans

• Train station Besançon Viotte

→ Besançon, Doubs, Franche-Comté,
France

→ Distance : 15.5mi.
→ Time : 30'

• Motorway (junction) A36

→ Besançon, Doubs, Franche-Comté,
France

→ Distance : 18.5mi.
→ Time : 45'

• Airport Basel/Mulhouse/Freiburg

→ Basel, Canton of Basel-City, Switzerland
→ Distance : 105mi.
→ Time : 2h

• Besançon : (13,7mi.)

• Pontarlier : (21,7mi.)

• Arbois : (28mi.)

Contact

Spoken
languages



Gîte - Self Catering
Ornans - France
"Chez Mamie Maxeline"

[Book now](#)

Availability calendar - from : january 2018

Jan	M	Tu	W	Th	F	Sa	Su	M	Tu	W	Th	F	Sa	Su	M	Tu	W	Th	F	Sa	Su	M	Tu	W							
2018	1	2	3	4	5	6	7	8	9	10	11	12	13	14	15	16	17	18	19	20	21	22	23	24	25	26	27	28	29	30	31

Feb	Th	F	Sa	Su	M	Tu	W	Th	F	Sa	Su	M	Tu	W	Th	F	Sa	Su	M	Tu	W									
2018	1	2	3	4	5	6	7	8	9	10	11	12	13	14	15	16	17	18	19	20	21	22	23	24	25	26	27	28		
	-	-	-	-	-	-	-	-	-	-	-	-	-	-	-	-	-	-	-	-	-	-	-	-	-	-	-	-	-	-

Mar	Th	F	Sa	Su	M	Tu	W	Th	F	Sa	Su	M	Tu	W	Th	F	Sa	Su	M	Tu	W	Th	F	Sa							
2018	1	2	3	4	5	6	7	8	9	10	11	12	13	14	15	16	17	18	19	20	21	22	23	24	25	26	27	28	29	30	31
	-	-	-	-	-	-	-	-	-	-	-	-	-	-	-	-	-	-	-	-	-	-	-	-	-	-	-	-	-	-	

Apr	Su	M	Tu	W	Th	F	Sa	Su	M	Tu	W	Th	F	Sa	Su	M	Tu	W	Th	F	Sa	Su	M							
2018	1	2	3	4	5	6	7	8	9	10	11	12	13	14	15	16	17	18	19	20	21	22	23	24	25	26	27	28	29	30
	-	-	-	-	-	-	-	-	-	-	-	-	-	-	-	-	-	-	-	-	-	-	-	-	-	-	-	-	-	-

May	Tu	W	Th	F	Sa	Su	M	Tu	W	Th	F	Sa	Su	M	Tu	W	Th	F	Sa	Su	M	Tu	W	Th	F	Sa	Su	M	Tu	W	Th
2018	1	2	3	4	5	6	7	8	9	10	11	12	13	14	15	16	17	18	19	20	21	22	23	24	25	26	27	28	29	30	31
	-	-	-	-	-	-	-	-	-	-	-	-	-	-	-	-	-	-	-	-	-	-	-	-	-	-	-	-	-	-	-

June	F	Sa	Su	M	Tu	W	Th	F	Sa	Su	M	Tu	W	Th	F	Sa	Su	M	Tu	W	Th	F	Sa							
2018	1	2	3	4	5	6	7	8	9	10	11	12	13	14	15	16	17	18	19	20	21	22	23	24	25	26	27	28	29	30
	-	-	-	-	-	-	-	-	-	-	-	-	-	-	-	-	-	-	-	-	-	-	-	-	-	-	-	-	-	-

Jul	Su	M	Tu	W	Th	F	Sa	Su	M	Tu	W	Th	F	Sa	Su	M	Tu	W	Th	F	Sa	Su	M	Tu	W	Th	F	Sa	Su	M	Tu
2018	1	2	3	4	5	6	7	8	9	10	11	12	13	14	15	16	17	18	19	20	21	22	23	24	25	26	27	28	29	30	31
	-	-	-	-	-	-	-	-	-	-	-	-	-	-	-	-	-	-	-	-	-	-	-	-	-	-	-	-	-	-	-

Aug	W	Th	F	Sa	Su	M	Tu	W	Th	F	Sa	Su	M	Tu	W	Th	F	Sa	Su	M	Tu	W	Th	F	Sa	Su	M	Tu	W	Th	F
2018	1	2	3	4	5	6	7	8	9	10	11	12	13	14	15	16	17	18	19	20	21	22	23	24	25	26	27	28	29	30	31
	-	-	-	-	-	-	-	-	-	-	-	-	-	-	-	-	-	-	-	-	-	-	-	-	-	-	-	-	-	-	-

Sep	Sa	Su	M	Tu	W	Th	F	Sa	Su	M	Tu	W	Th	F	Sa	Su	M	Tu	W	Th	F	Sa	Su							
2018	1	2	3	4	5	6	7	8	9	10	11	12	13	14	15	16	17	18	19	20	21	22	23	24	25	26	27	28	29	30
	-	-	-	-	-	-	-	-	-	-	-	-	-	-	-	-	-	-	-	-	-	-	-	-	-	-	-	-	-	-

Oct	M	Tu	W	Th	F	Sa	Su	M	Tu	W	Th	F	Sa	Su	M	Tu	W	Th	F	Sa	Su	M	Tu	W							
2018	1	2	3	4	5	6	7	8	9	10	11	12	13	14	15	16	17	18	19	20	21	22	23	24	25	26	27	28	29	30	31
	-	-	-	-	-	-	-	-	-	-	-	-	-	-	-	-	-	-	-	-	-	-	-	-	-	-	-	-	-	-	

 Reserved



Gîte - Self Catering
Doubs - Franche-Comté
"Chez Mamie Maxeline"

8

[Book now](#)

Availability calendar - from : october 2018


Nov	Th	F	Sa	Su	M	Tu	W	Th	F	Sa	Su	M	Tu	W	Th	F	Sa	Su	M	Tu	W	Th	F	Sa	Su	M	Tu	W	Th	F
2018	1	2	3	4	5	6	7	8	9	10	11	12	13	14	15	16	17	18	19	20	21	22	23	24	25	26	27	28	29	30
-	-	-	-	-	-	-	-	-	-	-	-	-	-	-	-	-	-	-	-	-	-	-	-	-	-	-	-	-	-	-

Dec	Sa	Su	M	Tu	W	Th	F	Sa	Su	M	Tu	W	Th	F	Sa	Su	M	Tu	W	Th	F	Sa	Su	M							
2018	1	2	3	4	5	6	7	8	9	10	11	12	13	14	15	16	17	18	19	20	21	22	23	24	25	26	27	28	29	30	31
-	-	-	-	-	-	-	-	-	-	-	-	-	-	-	-	-	-	-	-	-	-	-	-	-	-	-	-	-	-	-	

Reserved

[Month : Next >>](#)

Rental rates - Gîte - Self Catering - Town House - from 4 to 6 Person(s)

Rates	Night	Weekend	week	2 weeks	Month
 Low season	-	£108*	£314* (Saturday)	£582* (Saturday)	£1075*
 Mid season	-	£116*	£358* (Saturday)	£672* (Saturday)	£1165*
 High season	-	£134*	£403* (Saturday)	£762* (Saturday)	£1344*
 Festive specials	-	£134*	£403*	£762*	-
 Promotional period	-	£90*	£269* (Saturday)	£538* (Saturday)	£896*

(Check-in day)

[Book now](#)



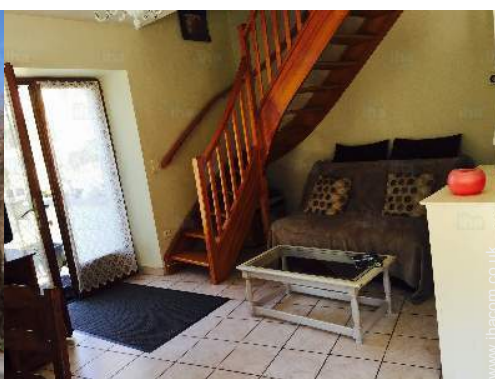
bedroom



bedroom



Kitchen Area



living room



living room

Booking conditions

• Reservation

- Payment made upon reservation : 10% of rental sum
- Payment balance : on handing over the keys
- Deposit required : £134*

• rentals

- Service charges included
- Day tax in addition
- Cleaning charge levy on departure : £18*

[▶ Book now](#)

[▶ Contact the owner](#)

Accepted methods of payment

- Cheque • PayPal • Cash

Contact directly the property owners

www.ihacom.co.uk

Advert No.

16993

[>> Book now <<](#)

Contact

Spoken languages



* Converted at the rate indicated : €100 = \$117.29 = £89.59

Advert No. 16993

www.ihacom.co.uk

