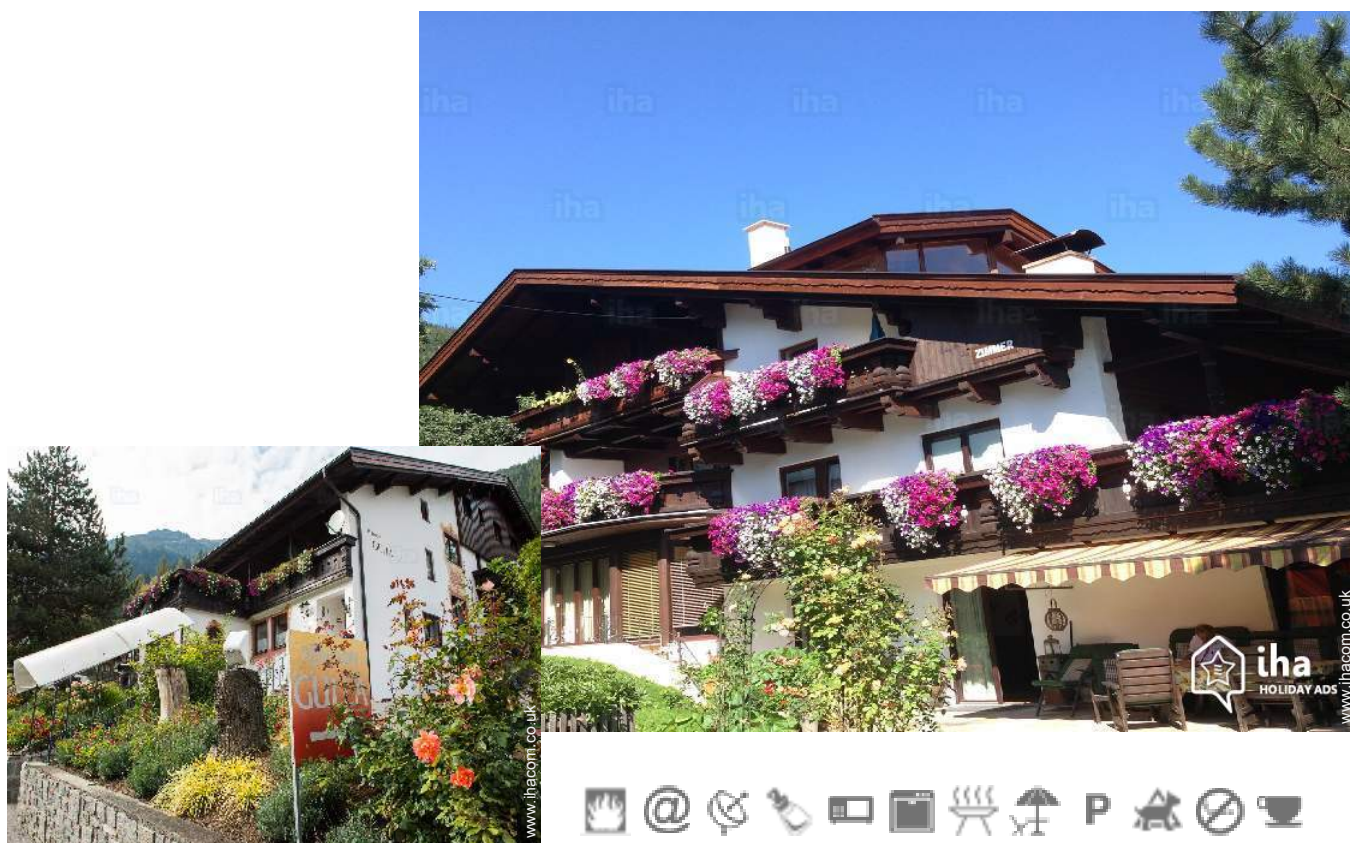


# Gîte - Self Catering Neustift im Stubaital "Pension Gulla"

Family-run bed and breakfast for individual travellers and groups up to 18 people. Cottage with breakfast (buffet) or for self-catering (2 guest kitchens). Hotel parking. Quiet and yet centrally located.



Gîte - Self Catering - Charming Stone-Built House, detached, 2 floors, separate entrance, in a(an) Property

Setting : suitable for a relaxing break, quiet

Capacity : from 14 to 18 person(s)  
Bedroom(s) : 7



Charmance ()  
Family Holiday Destinations ()

Neustift im Stubaital - Tyrol

Austria

Advert No. 12461

Reservation : +43 (0) 5226 2496 (Austria)

www.ihacom.co.uk



## Gîte - Self Catering



Gîte - Self Catering - Charming Stone-Built House, detached, 2 floors, separate entrance, in a(an) Property

- **Ideal for all age groups, family groups**

- **View :** panoramic, unobscured, mountain, country side, forest, village

- **Setting :** suitable for a relaxing break, quiet

- **Exposure :** South

" Relax also when you sleep because all rooms are furnished with solid wood pine beds. All rooms with balcony or terrace, shower or bath/WC. Color TV with cable and DVD. 150 m to the bus and the supermarkets, 300 m to the village centre. Breakfast room with a cosy tiled stove, two fully-equipped guest kitchens for individual use. Extra fridge. Ski and shoe room with boot warmer."

## Assets

- **Parking :**

Parking uncovered : 8 off road.

- **Advantages :**

Ski locker, ski boot warmer, ping-pong bats, 18 bike(s)

- **baby equipment :**

Baby chair

## Surroundings & location



" Not far from the 9 and 18 hole golf courses and riding stable. Paragliding and hang gliding (flight school), mountain biking - for athletes and a spezial trail for daring! Bicycle rental. Starting point for numerous valley - and high-altitude walks, mountain climbing (mountaineering school in the village) and climbing. Ski and snowshoe tours! Ski and sledge hire. Cross-country ski trails and endless ski runs, curling and skating. "

### Leisure

- **Leisure activities less than 20 km / 12 miles :**

Alpine skiing, cross-country skiing, off-piste skiing, ski-trekking, Télémart skiing, snowboarding, luge (run), ice-skating, golf, tennis, riding school, pathway, coastal/forest paths, hiking, climbing, rock climbing, mountain bike (path), hang-gliding, paragliding, horse-drawn carriage, horse trekking, mini-golf, fishing

- **Supervised :**

Ski school, childs ski area, tennis school, riding school

- **Attractions and relaxation :**

Bar/pub, discotheque, restaurant, cellar and wine tasting, fitness centre

### Surroundings

- **Locality :**

Ski slopes 0.3mi.  
Ski lifts 0.3mi.  
Ice skating rink 990'  
Heated swimming pool 0.3mi.  
Public swimming pool 0.3mi.  
Public tennis court 0.5mi.  
9 hole golf course 4.5mi.  
18 hole golf course 6mi.  
Flying clubs 12.5mi.

- **Amenities :**

Village centre 990'  
Bus stop / bus station 660'  
Ski bus pick up point 660'  
Bike/mountain bike hire 330'  
Ski hire shop 330'  
Breadshop 990'  
Caterer 660'  
Local shops 990'  
Supermarket 660'  
High class retailers 990'  
Hairdressing salon 660'  
Post office 990'  
Bank 990'  
Cash point 990'  
Chemist 990'  
Doctor 990'  
Hospital 12.5mi.



view of the village





Interior facilities

## Interior

- **Receive up to :**  
from 14 to 18 person(s)
- **Liveable floor area :**  
3,300 Sq.ft.
- **Interior layout :**  
7 bedroom(s), sleeping area, 7 bathroom, 8 WC, living room 323 Sq.ft., separate kitchen, dining room, dining area, tv room, veranda
- **Sleeps - bed(s) :**  
7 double bed(s), 4 single bed(s)
- **Guest facilities :**  
Fireplace, T.V., DVD player, t.v points, cable/satellite, internet access, high speed internet access, wifi, safe deposit box, heated towel rail, central heating, wood-burning stove, Curtains, Blinds, Double glazed
- **Appliances :**  
Crockery/cutlery, kitchen utensils, cafetiere, electric kettle, toaster, electric cooker, electric hobs, micro-wave oven, refridgerator, freezer, dish washer, vacuum cleaner

## Exterior

- **Outside accommodation :**  
Terrace, balcony, sundeck
- **Outside setting :**  
Enclosed grounds
- **Outside amenities :**  
BBQ, parasol, 3 rocking chair(s)



large bedroom

## Services

- **Washing :**  
Sheets, Towels, Blanket(s), Quilt(s), Pillows
- **House :**  
Cleaning, Cleaning on departure supplement, Snow clearance, Parking
- **Personnel :**  
Staff
- **Restauration :**  
Breakfast supplement, BBQ meal supplement

## For your guidance

- **For your guidance**  
Children welcome  
Pets accepted under certain conditions (ask the owner)  
Present on site : equine animals  
Non smoking rental  
Local voltage supply : 110-120V / 60Hz



view from the living room

Photo album - 1



view of the village



Interior facilities



view from the living room



large bedroom

Photo album - 2



bedroom

bedroom

kitchen



kitchen

infants bedroom

bathroom

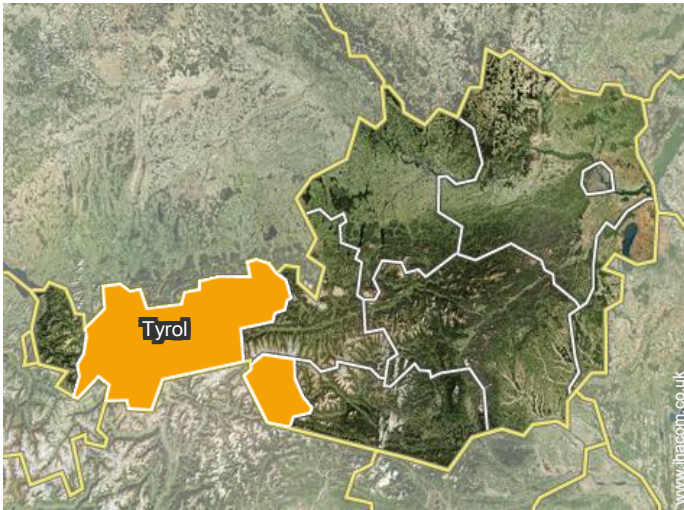


bathroom

kitchen

dining room

## Location



## Location & Access

" By plane to Munich (220 km) and Innsbruck (18km) by train to Innsbruck central train station and continue by bus (from the train station) to Neustift, busstop Mittelschule, 150 m from the pension! By car via the Brenner highway exit Schönberg, 9 km to Neustift, parking Gulla. "



GPS coordinates in degrees, minutes, seconds: Latitude 47°6'48"N - Longitude 11° 18'32"E ([Dwelling](#))

### Address

→ Schulweg 14  
6167 Neustift im Stubaital

• [Airport Innsbruck Kranebitten](#)

→ Innsbruck, Tyrol, Austria  
→ Distance : 13,7mi.

- Innsbruck : (15.5mi.)
- Salzburg : (112mi.)
- Munich : (130mi.)

## Contact

Spoken languages



# Gîte - Self Catering Tyrol - Neustift im Stubaital "Pension Gulla"

[Book now](#)

## Availability calendar - from : december 2017

Dec	F	Sa	Su	M	Tu	W	Th	F	Sa	Su	M	Tu	W	Th	F	Sa	Su	M	Tu	W	Th	F	Sa	Su							
2017	1	2	3	4	5	6	7	8	9	10	11	12	13	14	15	16	17	18	19	20	21	22	23	24	25	26	27	28	29	30	31

Jan	M	Tu	W	Th	F	Sa	Su	M	Tu	W	Th	F	Sa	Su	M	Tu	W	Th	F	Sa	Su	M	Tu	W							
2018	1	2	3	4	5	6	7	8	9	10	11	12	13	14	15	16	17	18	19	20	21	22	23	24	25	26	27	28	29	30	31

Feb	Th	F	Sa	Su	M	Tu	W	Th	F	Sa	Su	M	Tu	W	Th	F	Sa	Su	M	Tu	W									
2018	1	2	3	4	5	6	7	8	9	10	11	12	13	14	15	16	17	18	19	20	21	22	23	24	25	26	27	28		

Mar	Th	F	Sa	Su	M	Tu	W	Th	F	Sa	Su	M	Tu	W	Th	F	Sa	Su	M	Tu	W	Th	F	Sa							
2018	1	2	3	4	5	6	7	8	9	10	11	12	13	14	15	16	17	18	19	20	21	22	23	24	25	26	27	28	29	30	31

Apr	Su	M	Tu	W	Th	F	Sa	Su	M	Tu	W	Th	F	Sa	Su	M	Tu	W	Th	F	Sa	Su	M	Tu	W	Th	F	Sa	Su	M		
2018	1	2	3	4	5	6	7	8	9	10	11	12	13	14	15	16	17	18	19	20	21	22	23	24	25	26	27	28	29	30	31	

May	Tu	W	Th	F	Sa	Su	M	Tu	W	Th	F	Sa	Su	M	Tu	W	Th	F	Sa	Su	M	Tu	W	Th	F	Sa	Su	M	Tu	W	Th	
2018	1	2	3	4	5	6	7	8	9	10	11	12	13	14	15	16	17	18	19	20	21	22	23	24	25	26	27	28	29	30	31	

June	F	Sa	Su	M	Tu	W	Th	F	Sa	Su	M	Tu	W	Th	F	Sa	Su	M	Tu	W	Th	F	Sa								
2018	1	2	3	4	5	6	7	8	9	10	11	12	13	14	15	16	17	18	19	20	21	22	23	24	25	26	27	28	29	30	

Jul	Su	M	Tu	W	Th	F	Sa	Su	M	Tu	W	Th	F	Sa	Su	M	Tu	W	Th	F	Sa	Su	M	Tu	W	Th	F	Sa	Su	M	Tu	
2018	1	2	3	4	5	6	7	8	9	10	11	12	13	14	15	16	17	18	19	20	21	22	23	24	25	26	27	28	29	30	31	

Aug	W	Th	F	Sa	Su	M	Tu	W	Th	F	Sa	Su	M	Tu	W	Th	F	Sa	Su	M	Tu	W	Th	F	Sa	Su	M	Tu	W	Th	F	
2018	1	2	3	4	5	6	7	8	9	10	11	12	13	14	15	16	17	18	19	20	21	22	23	24	25	26	27	28	29	30	31	

Sep	Sa	Su	M	Tu	W	Th	F	Sa	Su	M	Tu	W	Th	F	Sa	Su	M	Tu	W	Th	F	Sa	Su								
2018	1	2	3	4	5	6	7	8	9	10	11	12	13	14	15	16	17	18	19	20	21	22	23	24	25	26	27	28	29	30	

Reserved



Gîte - Self Catering  
Tyrol - Austria  
"Pension Gulla"

8

[Book now](#)

Availability calendar - from : september 2018

Oct	M	Tu	W	Th	F	Sa	Su	M	Tu	W	Th	F	Sa	Su	M	Tu	W	Th	F	Sa	Su	M	Tu	W							
2018	1	2	3	4	5	6	7	8	9	10	11	12	13	14	15	16	17	18	19	20	21	22	23	24	25	26	27	28	29	30	31
	-	-	-	-	-	-	-	-	-	-	-	-	-	-	-	-	-	-	-	-	-	-	-	-	-	-	-	-	-	-	

Nov	Th	F	Sa	Su	M	Tu	W	Th	F	Sa	Su	M	Tu	W	Th	F	Sa	Su	M	Tu	W	Th	F							
2018	1	2	3	4	5	6	7	8	9	10	11	12	13	14	15	16	17	18	19	20	21	22	23	24	25	26	27	28	29	30
	-	-	-	-	-	-	-	-	-	-	-	-	-	-	-	-	-	-	-	-	-	-	-	-	-	-	-	-	-	

Reserved

[Month : Next >>](#)

Rental rates - Gîte - Self Catering - Charming Stone-Built House - from 14 to 18 Person(s)

Rates	Night	Weekend	week	2 weeks	Month
<input type="checkbox"/> Low season	£376* (Saturday) > 7	-	-	-	-
<input type="checkbox"/> High season	£376* (Saturday) > 7	-	-	-	-

(Check-in day) > Minimum Night

[Book now](#)

Booking conditions

- **Reservation**  
→ Payment made upon reservation : 25% of rental sum  
→ Payment balance : on handing over the keys
- **rentals**  
→ Service charges included  
→ Day tax in addition  
→ Cleaning charge levy on departure : £54\*

[▶ Book now](#)

[▶ Contact the owner](#)

Accepted methods of payment

- International Money Order • Bank transfer (wire) • Cash

Contact directly the property owners

[www.ihacom.co.uk](http://www.ihacom.co.uk)

Advert No.

12461

[>> Book now <<](#)

Contact

Spoken languages



\* Converted at the rate indicated : €100 = \$117.29 = £89.59

Advert No. 12461

[www.ihacom.co.uk](http://www.ihacom.co.uk)



[>> HOLIDAY LETTINGS](#)

BOOK DIRECT WITH THE OWNERS