

Gîte - Self Catering Les Andelys Town House

In the heart of the Petit-Andely and at the foot of the Château Gaillard, you will find a House with a facade of brick and yellow wooden shutters, ready to welcome you in short as well as in long stay, subject to availability.



Gîte - Self Catering - Town House,
semi-detached, 2 floors, shared entrance,
in a(an) Property

Setting : pleasant, calm

Capacity : from 1 to 10 person(s)

Bedroom(s) : 4

Room(s) : 4

Les Andelys - Eure (27) - Upper Normandy

France

Reservation : +33 (0) 2 32 21 55 43 (France)

Advert No. 26443

www.ihacom.co.uk



>> HOLIDAY LETTINGS

BOOK DIRECT WITH THE OWNERS

Gîte - Self Catering



Gîte - Self Catering - Town House, semi-detached, 2 floors, shared entrance, in a(an) Property

- **Ideal for all age groups, couples**
- **View** : unobscured, not overlooked, village, square, monument, street/avenue
- **Setting** : pleasant, calm
- **Exposure** : North-west

" After the uphill walk to the Château-Gaillard where you have admired the beautiful point of view on the Seine, you will be rewarded by a warm stop at the home of Paul Fort transformed into a unique tea room in the garden in espalier overlooking the Petit-Andely. You will be under the charm of the hostess and the colors in multiple shades, the sky as the landscape character of pink brick and half-timbered houses. At any time of the day, walks along the Seine are a pleasure of the eyes and the soul as of walkers. A few strolls in small shops or restaurants can make your moments more. "



bedroom

Surroundings & location



City

" The Collegiate Church of les Andelys you reveal its splendid 16th-century stained-glass windows and organ that has nothing to envy them. A splendid Guardi awaits you at an another detour. The Church of Saint-Sauveur will charm you with its architectural harmony (13th century). Further will be Ecois, Lyons la Foret, the andelle Valley... For the sportsman, installation and its Lake and its golf course. "

Leisure

- **Leisure activities less than 20 km / 12 miles** :

Canoeing, golf, tennis, riding school, pony club, pathway, hiking, climbing, paragliding, horse trekking, donkey rides, fishing, pétanque pitch

- **Supervised** :

Tennis school, riding school

- **Attractions and relaxation** :

Restaurant, cinema, leisure park, nature reserve, art gallery, historical site, museum, festivals

Surroundings

- **Locality** :

9 hole golf course 9mi.
Cliff 0.62mi.
River 165'

- **Amenities** :

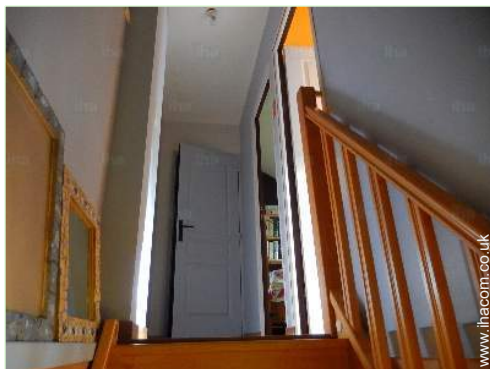
Town centre <165'
Breadshop <165'
Local shops <165'
Supermarket 0.3mi.
Hairdressing salon 0.3mi.
Post office 0.62mi.
Bank 0.93mi.
Cash point 0.93mi.
Chemist 0.3mi.
Doctor 1.25mi.
Hospital 15.5mi.



view from the flat



bedroom



the flat

Interior

- **Receive up to :**

from 1 to 10 person(s)

- **Liveable floor area :**

970 Sq.ft.

- **Interior layout :**

4 Room(s), 4 bedroom(s), 3 shower room, 3 WC

- **Sleeps - bed(s) :**

2 sofa bed(s) 2 pers, 2 single bed(s), 1 baby cot(s), 1 camp bed(s), 1 possible extra bed(s)

- **Guest facilities :**

Board games, wifi, hair dryer, heated towel rail, central heating, Glazed in area, Curtains

- **Appliances :**

Crockery/cutlery, kitchen utensils, cafetiere, electric coffee maker, electric kettle, toaster, electric hobs, mini-oven, micro-wave oven, extractor hood, refridgerator, washing machine, vacuum cleaner, iron, ironing board

Exterior

- **Outside accommodation :**

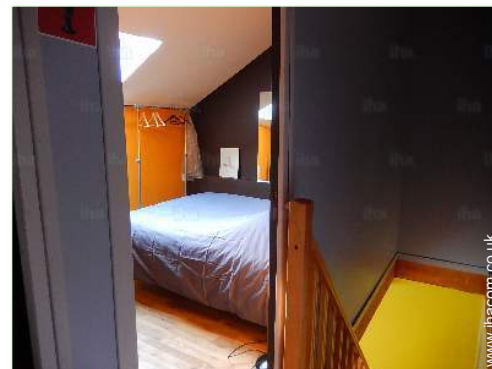
Terrace

- **Outside setting :**

Private courtyard 215 Sq.ft.

- **Outside amenities :**

Garden table(s), 2 garden seat(s), 2 sun recliner(s)



the flat

Services

- **Washing :**

Sheets supplement (+£9*), Towels, Blanket (s), Pillows

- **House :**

Cleaning on departure supplement (+£13*)

- **Restauration :**

Breakfast supplement (+£6*)

For your guidance

- **For your guidance**

Non smoking rental, mobile telephone network coverage

Water : hot/cold

Electricity supply : mains



the flat

Photo album - 1



sleeping nook



bedroom



bedroom



view from the flat



the flat



the flat

Photo album - 2



the flat



the flat



the flat



the flat



view of a monument



Surroundings

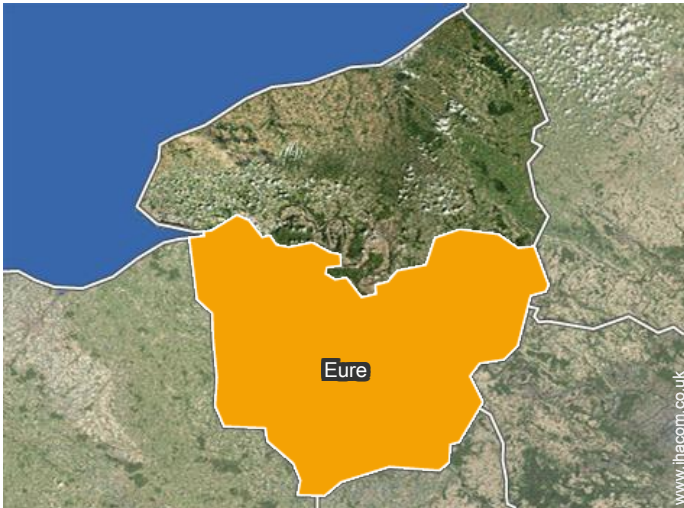


view of a monument



view of the village centre

Location



Location & Access

" For those coming from Paris: A13 axis: Paris-Rouen exit to Gaillon-Aubevoye or Cergy-Pontoise, Magny en Vexin (North West of Paris) train: the nearest train station is 12 km: Gaillon-Aubevoye. 1 h 30 from Paris: 1 h from Rouen and far from the sea. "



GPS coordinates in degrees, minutes, seconds: Latitude 49°14'32"N - Longitude 1° 24'1"E ([Dwelling](#))

Address

→ 4 RUE SAINT JACQUES
27700 Les Andelys

→ Distance : 15mi.
→ Time : 30'

● Motorway (junction) A13

→ Gaillon, Eure, Upper Normandy, France
→ Distance : 7,5mi.
→ Time : 15'

- Lyons-la-Forêt : (12.5mi.)
- Giverny : (18.5mi.)
- Rouen : (28mi.)

● Train station Gaillon Aubevoye

→ Gaillon, Eure, Upper Normandy, France
→ Distance : 7,5mi.
→ Time : 15'

● Train station Vernon

→ Vernon, Eure, Upper Normandy, France

Contact

Spoken languages



Gîte - Self Catering
Les Andelys - France
Town House

[Book now](#)

Availability calendar - from : december 2017

Dec	F	Sa	Su	M	Tu	W	Th	F	Sa	Su	M	Tu	W	Th	F	Sa	Su	M	Tu	W	Th	F	Sa	Su							
2017	1	2	3	4	5	6	7	8	9	10	11	12	13	14	15	16	17	18	19	20	21	22	23	24	25	26	27	28	29	30	31
											-	-	-	-	-	-	-	-	-	-	-	-	-	-	-	-	-	-	-	-	

Jan	M	Tu	W	Th	F	Sa	Su	M	Tu	W	Th	F	Sa	Su	M	Tu	W	Th	F	Sa	Su	M	Tu	W							
2018	1	2	3	4	5	6	7	8	9	10	11	12	13	14	15	16	17	18	19	20	21	22	23	24	25	26	27	28	29	30	31
	-	-	-	-	-	-	-	-	-	-	-	-	-	-	-	-	-	-	-	-	-	-	-	-	-	-	-	-	-	-	

Feb	Th	F	Sa	Su	M	Tu	W	Th	F	Sa	Su	M	Tu	W	Th	F	Sa	Su	M	Tu	W							
2018	1	2	3	4	5	6	7	8	9	10	11	12	13	14	15	16	17	18	19	20	21	22	23	24	25	26	27	28
	-	-	-	-	-	-	-	-	-	-	-	-	-	-	-	-	-	-	-	-	-	-	-	-	-	-	-	-

Mar	Th	F	Sa	Su	M	Tu	W	Th	F	Sa	Su	M	Tu	W	Th	F	Sa	Su	M	Tu	W	Th	F	Sa							
2018	1	2	3	4	5	6	7	8	9	10	11	12	13	14	15	16	17	18	19	20	21	22	23	24	25	26	27	28	29	30	31
	-	-	-	-	-	-	-	-	-	-	-	-	-	-	-	-	-	-	-	-	-	-	-	-	-	-	-	-	-	-	

Apr	Su	M	Tu	W	Th	F	Sa	Su	M	Tu	W	Th	F	Sa	Su	M	Tu	W	Th	F	Sa	Su	M							
2018	1	2	3	4	5	6	7	8	9	10	11	12	13	14	15	16	17	18	19	20	21	22	23	24	25	26	27	28	29	30
	-	-	-	-	-	-	-	-	-	-	-	-	-	-	-	-	-	-	-	-	-	-	-	-	-	-	-	-	-	-

May	Tu	W	Th	F	Sa	Su	M	Tu	W	Th	F	Sa	Su	M	Tu	W	Th	F	Sa	Su	M	Tu	W	Th							
2018	1	2	3	4	5	6	7	8	9	10	11	12	13	14	15	16	17	18	19	20	21	22	23	24	25	26	27	28	29	30	31
	-	-	-	-	-	-	-	-	-	-	-	-	-	-	-	-	-	-	-	-	-	-	-	-	-	-	-	-	-	-	

June	F	Sa	Su	M	Tu	W	Th	F	Sa	Su	M	Tu	W	Th	F	Sa	Su	M	Tu	W	Th	F	Sa							
2018	1	2	3	4	5	6	7	8	9	10	11	12	13	14	15	16	17	18	19	20	21	22	23	24	25	26	27	28	29	30
	-	-	-	-	-	-	-	-	-	-	-	-	-	-	-	-	-	-	-	-	-	-	-	-	-	-	-	-	-	

Jul	Su	M	Tu	W	Th	F	Sa	Su	M	Tu	W	Th	F	Sa	Su	M	Tu	W	Th	F	Sa	Su	M	Tu							
2018	1	2	3	4	5	6	7	8	9	10	11	12	13	14	15	16	17	18	19	20	21	22	23	24	25	26	27	28	29	30	31
	-	-	-	-	-	-	-	-	-	-	-	-	-	-	-	-	-	-	-	-	-	-	-	-	-	-	-	-	-	-	

Aug	W	Th	F	Sa	Su	M	Tu	W	Th	F	Sa	Su	M	Tu	W	Th	F	Sa	Su	M	Tu	W	Th	F							
2018	1	2	3	4	5	6	7	8	9	10	11	12	13	14	15	16	17	18	19	20	21	22	23	24	25	26	27	28	29	30	31
	-	-	-	-	-	-	-	-	-	-	-	-	-	-	-	-	-	-	-	-	-	-	-	-	-	-	-	-	-	-	

Sep	Sa	Su	M	Tu	W	Th	F	Sa	Su	M	Tu	W	Th	F	Sa	Su	M	Tu	W	Th	F	Sa	Su							
2018	1	2	3	4	5	6	7	8	9	10	11	12	13	14	15	16	17	18	19	20	21	22	23	24	25	26	27	28	29	30
	-	-	-	-	-	-	-	-	-	-	-	-	-	-	-	-	-	-	-	-	-	-	-	-	-	-	-	-	-	



Gîte - Self Catering
Eure - Upper Normandy
Town House

8

[Book now](#)


Availability calendar - from : september 2018

Oct	M	Tu	W	Th	F	Sa	Su	M	Tu	W	Th	F	Sa	Su	M	Tu	W	Th	F	Sa	Su	M	Tu	W							
2018	1	2	3	4	5	6	7	8	9	10	11	12	13	14	15	16	17	18	19	20	21	22	23	24	25	26	27	28	29	30	31

Nov	Th	F	Sa	Su	M	Tu	W	Th	F	Sa	Su	M	Tu	W	Th	F	Sa	Su	M	Tu	W	Th	F							
2018	1	2	3	4	5	6	7	8	9	10	11	12	13	14	15	16	17	18	19	20	21	22	23	24	25	26	27	28	29	30

[Month : Next >>](#)

Rental rates - Gîte - Self Catering - Town House - from 1 to 10 Person(s)

Rates	Night	Weekend	week	2 weeks	Month
 Low season	£49* ↓ > 2	£96*	-	-	£340*

↓ Reducing rates > Minimum Night

[Book now](#)

Booking conditions

• Reservation

- Payment made upon reservation : 30% of rental sum
- Payment balance : on handing over the keys
- Deposit required

• rentals

- Day tax included
- Anticipated supplement for : - supplementary bed(s)

[▶ Book now](#)

[▶ Contact the owner](#)

Accepted methods of payment

- International Money Order
- Cheque
- Cash
- Holiday voucher

Contact directly the property owners

www.ihacom.co.uk

Advert No.

26443

[>> Book now <<](#)

Contact

Spoken languages



* Converted at the rate indicated : €100 = \$117.29 = £89.59

Advert No. 26443

www.ihacom.co.uk



[>> HOLIDAY LETTINGS](#)

[BOOK DIRECT WITH THE OWNERS](#)