

# Gîte - Self Catering La Rivière (Rivière-Saint-Louis) "Les Caps Iles"



Gîte - Self Catering - Wooden House, detached, single storey, separate entrance, in a(an) Private property

Setting : exotic, peaceful

Capacity : from 1 to 2 person(s)

Bedroom(s) : 1

Room(s) : 2

La Rivière (Rivière-Saint-Louis)

Reunion Island

Advert No. 42492

Reservation : +262 (0) 2 62 39 86 29 (Reunion Island)

[www.ihacom.co.uk](http://www.ihacom.co.uk)



>> HOLIDAY LETTINGS

BOOK DIRECT WITH THE OWNERS

## Gîte - Self Catering



Gîte - Self Catering - Wooden House, detached, single storey, separate entrance, in a(an) Private property

- **Ideal for couples, couples with baby**
- **View** : unobscured, not overlooked, sea/ocean, mountain, village, fantastic sunset
- **Setting** : exotic, peaceful

## Assets

- **Parking** :  
Parking uncovered : 1 reserved bay.



bedroom

## Surroundings & location



City

### Leisure

- **Leisure activities less than 20 km / 12 miles** :

Bathing, snorkelling, scuba diving, surfing, golf, coastal/forest paths, hiking, climbing, parascending, boat trips, horse trekking, go-karting, deep-sea angling, pétanque pitch

- **Attractions and relaxation** :

Bar/pub, discotheque, restaurant, cinema, casino

### Surroundings

- **Locality** :

Heated swimming pool 1.85mi.  
Sea/ocean 9mi.  
18 hole golf course 9mi.  
Surfing spots 12.5mi.  
River 3mi.  
Forest 9mi.  
Mountain range 18.5mi.  
Marina 9mi.

- **Amenities** :

Village centre 330'  
Bus stop / bus station 330'  
Car rental 3mi.  
Breadshop 330'  
Caterer 330'  
Local shops 330'  
Supermarket 1.85mi.  
Hairdressing salon 330'  
Post office 1.85mi.  
Bank 1.85mi.  
Cash point 1.85mi.  
Chemist 330'  
Doctor 330'  
Nurse 330'  
Hospital 9mi.



view from the garden/park



view from the garden/park



shower room

## Interior

- **Receive up to :**  
from 1 to 2 person(s)
- **Liveable floor area :**  
270 Sq.ft.
- **Interior layout :**  
2 Room(s), 1 bedroom(s), 1 shower room, 1 WC, dining area
- **Sleeps - bed(s) :**  
1 double bed(s), 1 baby cot(s)
- **Guest facilities :**  
T.V., board games, t.v points, wifi, cupboard, Hanging wardrobe, hair dryer, mosquito nets, fully air conditioned, Curtains, Double glazed
- **Appliances :**  
Crockery/cuttlery, kitchen utensils, cafetiere, toaster, juicer, electric hobs, mini-oven, micro-wave oven, extractor hood, refridgerator, freezer, washing machine, vacuum cleaner, iron, ironing board

## Exterior

- **Ground surface :**  
0.37 acre
- **Outside accommodation :**  
Terrace 110 Sq.ft., covered terrace 85 Sq.ft.
- **Outside setting :**  
Enclosed grounds 0.37 acre, tropical garden > 0.25 acre
- **Outside amenities :**  
BBQ, garden table(s), 2 garden seat(s), parasol, 2 chaise(s) longue(s)

## Services

- **Washing :**  
Sheets, Towels, Linen, Blanket(s), Pillows
- **House :**  
Cleaning on departure supplement (+£18\*)

## For your guidance

- **For your guidance**  
No pet allowed  
Mobile telephone network coverage, personal transport advisable  
Water : hot/cold  
Local voltage supply : 220-240V / 50Hz  
Electricity supply : mains



Photo album - 1



Kitchen Area



bedroom



view from the garden/park

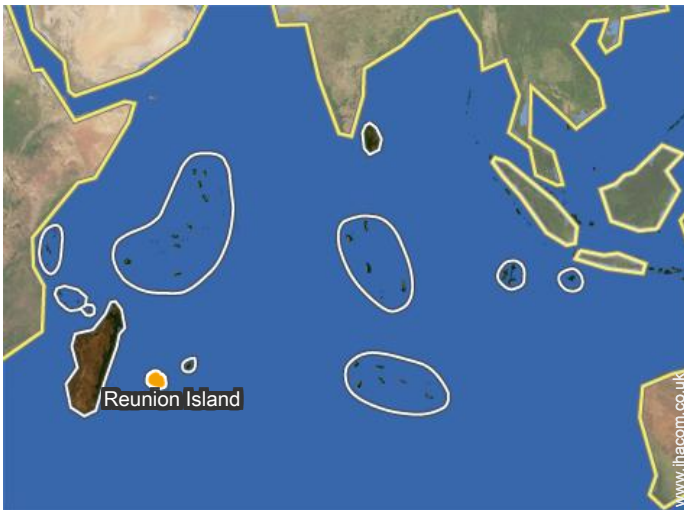


view from the garden/park



shower room

## Location



## Location & Access



GPS coordinates in degrees, minutes, seconds: Latitude 21° 16'9"S - Longitude 55°27'0"E ([Dwelling](#))

### Address

→ 15 chemin des Ruches  
97421 La Rivière (Rivière-Saint-Louis)

### • Airport Roland Garros

→ Saint-Denis (Reunion), Reunion Island  
→ Distance : 46,5mi.  
→ Time : 1h15'

- Cilaos : (18.5mi.)
- L'Étang-Salé-les-Bains : (9mi.)
- Saint-Pierre : (9mi.)

## Contact

Spoken languages



Gîte - Self Catering  
 La Rivière (Rivière-Saint-Louis) - Reunion Island  
**"Les Caps Iles"**

[Book now](#)

Availability calendar - from : june 2019

June	Sa	Su	M	Tu	W	Th	F	Sa	Su	M	Tu	W	Th	F	Sa	Su	M	Tu	W	Th	F	Sa	Su	M	Tu	W	Th	F	Sa	Su
2019	1	2	3	4	5	6	7	8	9	10	11	12	13	14	15	16	17	18	19	20	21	22	23	24	25	26	27	28	29	30
															-	-	-	-	-	-	-	-	-	-	-	-	-	-	-	-

Jul	M	Tu	W	Th	F	Sa	Su	M	Tu	W	Th	F	Sa	Su	M	Tu	W	Th	F	Sa	Su	M	Tu	W	Th	F	Sa	Su	M	Tu	W
2019	1	2	3	4	5	6	7	8	9	10	11	12	13	14	15	16	17	18	19	20	21	22	23	24	25	26	27	28	29	30	31
	-	-	-	-	-	-	-	-	-	-	-	-	-	-	-	-	-	-	-	-	-	-	-	-	-	-	-	-	-	-	-

Aug	Th	F	Sa	Su	M	Tu	W	Th	F	Sa	Su	M	Tu	W	Th	F	Sa	Su	M	Tu	W	Th	F	Sa	Su	M	Tu	W	Th	F	Sa
2019	1	2	3	4	5	6	7	8	9	10	11	12	13	14	15	16	17	18	19	20	21	22	23	24	25	26	27	28	29	30	31
	-	-	-	-	-	-	-	-	-	-	-	-	-	-	-	-	-	-	-	-	-	-	-	-	-	-	-	-	-	-	-

Sep	Su	M	Tu	W	Th	F	Sa	Su	M	Tu	W	Th	F	Sa	Su	M	Tu	W	Th	F	Sa	Su	M	Tu	W	Th	F	Sa	Su	M
2019	1	2	3	4	5	6	7	8	9	10	11	12	13	14	15	16	17	18	19	20	21	22	23	24	25	26	27	28	29	30
	-	-	-	-	-	-	-	-	-	-	-	-	-	-	-	-	-	-	-	-	-	-	-	-	-	-	-	-	-	-

Oct	Tu	W	Th	F	Sa	Su	M	Tu	W	Th	F	Sa	Su	M	Tu	W	Th	F	Sa	Su	M	Tu	W	Th	F	Sa	Su	M	Tu	W	Th
2019	1	2	3	4	5	6	7	8	9	10	11	12	13	14	15	16	17	18	19	20	21	22	23	24	25	26	27	28	29	30	31
	-	-	-	-	-	-	-	-	-	-	-	-	-	-	-	-	-	-	-	-	-	-	-	-	-	-	-	-	-	-	-

Nov	F	Sa	Su	M	Tu	W	Th	F	Sa	Su	M	Tu	W	Th	F	Sa	Su	M	Tu	W	Th	F	Sa	Su	M	Tu	W	Th	F	Sa
2019	1	2	3	4	5	6	7	8	9	10	11	12	13	14	15	16	17	18	19	20	21	22	23	24	25	26	27	28	29	30
	-	-	-	-	-	-	-	-	-	-	-	-	-	-	-	-	-	-	-	-	-	-	-	-	-	-	-	-	-	-

Dec	Su	M	Tu	W	Th	F	Sa	Su	M	Tu	W	Th	F	Sa	Su	M	Tu	W	Th	F	Sa	Su	M	Tu	W	Th	F	Sa	Su	M	Tu
2019	1	2	3	4	5	6	7	8	9	10	11	12	13	14	15	16	17	18	19	20	21	22	23	24	25	26	27	28	29	30	31
	-	-	-	-	-	-	-	-	-	-	-	-	-	-	-	-	-	-	-	-	-	-	-	-	-	-	-	-	-	-	-

Jan	W	Th	F	Sa	Su	M	Tu	W	Th	F	Sa	Su	M	Tu	W	Th	F	Sa	Su	M	Tu	W	Th	F	Sa	Su	M	Tu	W	Th	F
2020	1	2	3	4	5	6	7	8	9	10	11	12	13	14	15	16	17	18	19	20	21	22	23	24	25	26	27	28	29	30	31
	-	-	-	-	-	-	-	-	-	-	-	-	-	-	-	-	-	-	-	-	-	-	-	-	-	-	-	-	-	-	-

Feb	Sa	Su	M	Tu	W	Th	F	Sa	Su	M	Tu	W	Th	F	Sa	Su	M	Tu	W	Th	F	Sa	Su						
2020	1	2	3	4	5	6	7	8	9	10	11	12	13	14	15	16	17	18	19	20	21	22	23	24	25	26	27	28	29
	-	-	-	-	-	-	-	-	-	-	-	-	-	-	-	-	-	-	-	-	-	-	-	-					

Mar	Su	M	Tu	W	Th	F	Sa	Su	M	Tu	W	Th	F	Sa	Su	M	Tu	W	Th	F	Sa	Su	M	Tu							
2020	1	2	3	4	5	6	7	8	9	10	11	12	13	14	15	16	17	18	19	20	21	22	23	24	25	26	27	28	29	30	31
	-	-	-	-	-	-	-	-	-	-	-	-	-	-	-	-	-	-	-	-	-	-	-	-	-	-	-	-	-	-	



Gîte - Self Catering  
La Rivière (Rivière-Saint-Louis) - Reunion Island  
"Les Caps Iles"

7

[Book now](#)

Availability calendar - from : march 2020

Apr	W	Th	F	Sa	Su	M	Tu	W	Th	F	Sa	Su	M	Tu	W	Th	F	Sa	Su	M	Tu	W	Th							
2020	1	2	3	4	5	6	7	8	9	10	11	12	13	14	15	16	17	18	19	20	21	22	23	24	25	26	27	28	29	30
	-	-	-	-	-	-	-	-	-	-	-	-	-	-	-	-	-	-	-	-	-	-	-	-	-	-	-	-	-	

May	F	Sa	Su	M	Tu	W	Th	F	Sa	Su	M	Tu	W	Th	F	Sa	Su	M	Tu	W	Th	F	Sa	Su							
2020	1	2	3	4	5	6	7	8	9	10	11	12	13	14	15	16	17	18	19	20	21	22	23	24	25	26	27	28	29	30	31
	-	-	-	-	-	-	-	-	-	-	-	-	-	-	-	-	-	-	-	-	-	-	-	-	-	-	-	-	-	-	

[Month : Next >>](#)

Rental rates - Gîte - Self Catering - Wooden House - from 1 to 2 Person(s)

Rates	Night	Weekend	week	2 weeks	Month
 Low season	-	£107*	£267*	£498*	£712*
 Mid season	-	£107*	£267*	£498*	£712*
 High season	-	£107*	£267*	£498*	£712*

[Book now](#)

Booking conditions

• Reservation

- Payment made upon reservation : 30% of rental sum
- Payment balance : on handing over the keys
- Deposit required : £258\*

• rentals

- Service charges included
- Day tax included
- Cleaning charge levy on departure : £18\*

[▶ Book now](#)

[▶ Contact the owner](#)

Accepted methods of payment

- International Money Order
- Cheque
- Cash

Contact directly the property owners

[www.ihacom.co.uk](http://www.ihacom.co.uk)

Advert No.

42492

[>> Book now <<](#)

Contact

Spoken languages



\* Converted at the rate indicated : €100 = \$116.85 = £89

Advert No. 42492

[www.ihacom.co.uk](http://www.ihacom.co.uk)

