

# Gîte - Self Catering Haute Ardenne "Les Vieux Champs"

Available again after redevelopment.



Gîte - Self Catering - Country House, detached, single storey in a(an) Private property

Setting : country setting, rural

Capacity : 4 person(s)

Bedroom(s) : 2

Room(s) : 6



Qualité tourisme ( )

Gembes - Province of Luxembourg - Walloon

Belgium

Reservation : +32 (0) 61511961 (Belgium)

Advert No. 24596

www.ihacom.co.uk



>> HOLIDAY LETTINGS

BOOK DIRECT WITH THE OWNERS

## Gîte - Self Catering



Gîte - Self Catering - Country House, detached, single storey in a(an) Private property

- Ideal for family, couples
- View : panoramic, country side
- Setting : country setting, rural
- Exposure : South

"Slightly isolated, beautifully situated cottage in a field of 20 ares. Very quiet location at the edge of the great forest of the upper Lesse in a green environment made up of Woods and meadows. Its location will delight nature lovers, outdoors or rest simply. "

## Assets

- Parking :  
Parking uncovered : 3 off road.



landscaped garden

## Surroundings & location



" At the start of the cottage: 19 told and marked walks. the Almache: River that runs through the village. fishing. mountain bike circuit. tennis. Petanque. Nearby: horse riding (manege to 3 km). ski cross-country (Libin and Gedinne). mini golf at Gedinne. Kayaks: broth, Alle, Houyet. swimming: Rochefort, Bertrix, Beauraing, Saint-Hubert, Bouillon. wall climbing to Han-on-Lessecuriosites: the altarpiece from the 16th century in the Church St-Pierre in Daverdisse. Museum of the hoof at Porcheresse. The Committee House (1915) to Porcheresse. 1870 in Porcheresse water pump. Redu and the book village. The Euro Space Center in Transinnes. The Bell and the Carillo n Tellin Museum. The caves and the reserve of wild animals to Han-on-Lesse. The castle of Bouillon. The Basilica of St-Hubert. The quarry at Bertrix "

### Leisure

- Leisure activities less than 20 km / 12 miles :  
Bathing, riding school, pathway, mountain bike (path), horse trekking, go-karting, hunting, big game hunting, fishing, pétanque pitch
- Supervised :  
Riding school
- Attractions and relaxation :  
Bar/pub, restaurant, cinema, park and garden, zoo/animal park, historical site, museum, antiques & bric-a-brac, Bio farm

### Surroundings

- Locality :  
Heated swimming pool 6mi.  
Public swimming pool 6mi.  
River 660'  
Forest 0.3mi.
- Amenities :  
Village centre 0.3mi.  
Bus stop / bus station 0.3mi.  
Bike/mountain bike hire 3mi.  
Household linens for hire/laundry services 12.5mi.  
Breadshop 2.5mi.  
Caterer 4.5mi.  
Local shops 2.5mi.  
Supermarket 6mi.  
High class retailers 12.5mi.  
Hairdressing salon 3mi.  
Post office 2.5mi.  
Bank 4.5mi.  
Cash point 4.5mi.  
Chemist 4.5mi.  
Doctor 2.5mi.  
Hospital 18.5mi.



covered terrace



view from the terrace



dining area

## Interior

- **Receive up to :**

4 person(s)

- **Liveable floor area :**

1,300 Sq.ft.

- **Interior layout :**

6 Room(s), 2 bedroom(s), 1 bathroom, 1 shower room, 2 WC, living room 650 Sq.ft., sitting room 323 Sq.ft., american style kitchen, dining area, cosy nook, tv room, reading room, patio

- **Sleeps - bed(s) :**

2 double bed(s), 1 single bed(s)

- **Guest facilities :**

T.V., board games, book collection, t.v points, fly screens, electric heating, wood-burning stove, Glazed in area, Curtains, Blinds, Double glazed, fire alarm

- **Appliances :**

Crockery/cutlery, kitchen utensils, cafetiere, electric espresso coffee maker, electric kettle, toaster, juicer, crepe maker, electric cooker, electric hobs, oven, micro-wave oven, extractor hood, refridgerator, freezer, vacuum cleaner

## Exterior

- **Ground surface :**

0.5 acre

- **Outside accommodation :**

Terrace 215 Sq.ft., covered terrace 110 Sq.ft., garden shed

- **Outside setting :**

Private courtyard, enclosed grounds, garden, landscaped garden, lawn, wooded park, natural pools, stream

- **Outside amenities :**

BBQ, garden table(s), 6 garden seat(s), parasol, garden seated area, 2 chaise(s) longue(s)



bedroom

## Services

- **Washing :**

Blanket(s), Quilt(s), Pillows (3 X / per week)

- **House :**

Cleaning on departure supplement (+£18\*), Garden/swimming pool maintenance, Parking

## For your guidance

- **For your guidance**

Children welcome

Pets accepted under certain conditions (ask the owner)

Present on site : pets

Water : hot/cold

Local voltage supply : 110-120V / 60Hz

Electricity supply : mains



Country House

Photo album - 1



landscaped garden



view from the terrace



covered terrace



dining area



Country House

Photo album - 2



bedroom



bedroom



Kitchen Area



cosy nook



sitting room



sitting room



garden



Exterior amenities at guests disposal



General



Parking

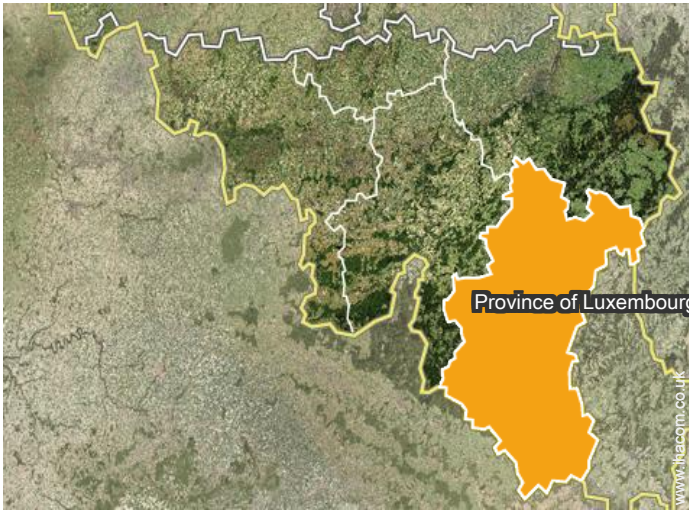


garden



Winter

### Location



### Location & Access

"Via e 411, exit 23 Wellin. Direction Gedinne and leaves the RN 35 in the direction of Gembes."



GPS coordinates in degrees, minutes, seconds: Latitude 49°59'15"N - Longitude 5°3'24"E ([Dwelling](#))

#### Address

→ Rue de Sodumont, 11  
6929 Gembes

#### • Motorway (junction) E411

→ Wellin, Province of Luxembourg,  
Walloon, Belgium  
→ Distance : 7,5mi.  
→ Time : 15'

#### • Train station Gedinne

→ Gedinne, Province of Namur, Walloon,  
Belgium  
→ Distance : 4.5mi.  
→ Time : 10'

#### • Airport Brussels South Charleroi

→ Brussels, Brussels-Capital, Belgium

→ Distance : 81mi.

→ Time : 1h

• Bouillon : (15.5mi.)

• Beauraing : (14,5mi.)

• Saint-Hubert : (18.5mi.)

### Contact

Spoken  
languages



Gîte - Self Catering  
 Walloon - Belgium  
**"Les Vieux Champs"**

[Book now](#)

Availability calendar - from : november 2018

Nov	Th	F	Sa	Su	M	Tu	W	Th	F	Sa	Su	M	Tu	W	Th	F	Sa	Su	M	Tu	W	Th	F	Sa	Su	M	Tu	W	Th	F	
2018	1	2	3	4	5	6	7	8	9	10	11	12	13	14	15	16	17	18	19	20	21	22	23	24	25	26	27	28	29	30	
																				-	-	-	-	-	-	-	-	-	-	-	
Dec	Sa	Su	M	Tu	W	Th	F	Sa	Su	M	Tu	W	Th	F	Sa	Su	M	Tu	W	Th	F	Sa	Su	M	Tu	W	Th	F	Sa	Su	M
2018	1	2	3	4	5	6	7	8	9	10	11	12	13	14	15	16	17	18	19	20	21	22	23	24	25	26	27	28	29	30	31
	-	-	-	-	-	-	-	-	-	-	-	-	-	-	-	-	-	-	-	-	-	-	-	-	-	-	-	-	-	-	
Jan	Tu	W	Th	F	Sa	Su	M	Tu	W	Th	F	Sa	Su	M	Tu	W	Th	F	Sa	Su	M	Tu	W	Th	F	Sa	Su	M	Tu	W	Th
2019	1	2	3	4	5	6	7	8	9	10	11	12	13	14	15	16	17	18	19	20	21	22	23	24	25	26	27	28	29	30	31
	-	-	-	-	-	-	-	-	-	-	-	-	-	-	-	-	-	-	-	-	-	-	-	-	-	-	-	-	-	-	
Feb	F	Sa	Su	M	Tu	W	Th	F	Sa	Su	M	Tu	W	Th	F	Sa	Su	M	Tu	W	Th	F	Sa	Su	M	Tu	W	Th			
2019	1	2	3	4	5	6	7	8	9	10	11	12	13	14	15	16	17	18	19	20	21	22	23	24	25	26	27	28			
	-	-	-	-	-	-	-	-	-	-	-	-	-	-	-	-	-	-	-	-	-	-	-	-	-	-	-	-			
Mar	F	Sa	Su	M	Tu	W	Th	F	Sa	Su	M	Tu	W	Th	F	Sa	Su	M	Tu	W	Th	F	Sa	Su	M	Tu	W	Th	F	Sa	Su
2019	1	2	3	4	5	6	7	8	9	10	11	12	13	14	15	16	17	18	19	20	21	22	23	24	25	26	27	28	29	30	31
	-	-	-	-	-	-	-	-	-	-	-	-	-	-	-	-	-	-	-	-	-	-	-	-	-	-	-	-	-	-	
Apr	M	Tu	W	Th	F	Sa	Su	M	Tu	W	Th	F	Sa	Su	M	Tu	W	Th	F	Sa	Su	M	Tu	W	Th	F	Sa	Su	M	Tu	
2019	1	2	3	4	5	6	7	8	9	10	11	12	13	14	15	16	17	18	19	20	21	22	23	24	25	26	27	28	29	30	
	-	-	-	-	-	-	-	-	-	-	-	-	-	-	-	-	-	-	-	-	-	-	-	-	-	-	-	-	-	-	
May	W	Th	F	Sa	Su	M	Tu	W	Th	F	Sa	Su	M	Tu	W	Th	F	Sa	Su	M	Tu	W	Th	F	Sa	Su	M	Tu	W	Th	F
2019	1	2	3	4	5	6	7	8	9	10	11	12	13	14	15	16	17	18	19	20	21	22	23	24	25	26	27	28	29	30	31
	-	-	-	-	-	-	-	-	-	-	-	-	-	-	-	-	-	-	-	-	-	-	-	-	-	-	-	-	-	-	
June	Sa	Su	M	Tu	W	Th	F	Sa	Su	M	Tu	W	Th	F	Sa	Su	M	Tu	W	Th	F	Sa	Su	M	Tu	W	Th	F	Sa	Su	
2019	1	2	3	4	5	6	7	8	9	10	11	12	13	14	15	16	17	18	19	20	21	22	23	24	25	26	27	28	29	30	
	-	-	-	-	-	-	-	-	-	-	-	-	-	-	-	-	-	-	-	-	-	-	-	-	-	-	-	-	-		
Jul	M	Tu	W	Th	F	Sa	Su	M	Tu	W	Th	F	Sa	Su	M	Tu	W	Th	F	Sa	Su	M	Tu	W	Th	F	Sa	Su	M	Tu	W
2019	1	2	3	4	5	6	7	8	9	10	11	12	13	14	15	16	17	18	19	20	21	22	23	24	25	26	27	28	29	30	31
	-	-	-	-	-	-	-	-	-	-	-	-	-	-	-	-	-	-	-	-	-	-	-	-	-	-	-	-	-	-	
Aug	Th	F	Sa	Su	M	Tu	W	Th	F	Sa	Su	M	Tu	W	Th	F	Sa	Su	M	Tu	W	Th	F	Sa	Su	M	Tu	W	Th	F	Sa
2019	1	2	3	4	5	6	7	8	9	10	11	12	13	14	15	16	17	18	19	20	21	22	23	24	25	26	27	28	29	30	31
	-	-	-	-	-	-	-	-	-	-	-	-	-	-	-	-	-	-	-	-	-	-	-	-	-	-	-	-	-	-	



Gîte - Self Catering  
Haute Ardenne - Belgium  
"Les Vieux Champs"

8

[Book now](#)

Availability calendar - from : august 2019




Sep	Su	M	Tu	W	Th	F	Sa	Su	M	Tu	W	Th	F	Sa	Su	M	Tu	W	Th	F	Sa	Su	M							
2019	1	2	3	4	5	6	7	8	9	10	11	12	13	14	15	16	17	18	19	20	21	22	23	24	25	26	27	28	29	30
-	-	-	-	-	-	-	-	-	-	-	-	-	-	-	-	-	-	-	-	-	-	-	-	-	-	-	-	-	-	

Oct	Tu	W	Th	F	Sa	Su	M	Tu	W	Th	F	Sa	Su	M	Tu	W	Th	F	Sa	Su	M	Tu	W	Th							
2019	1	2	3	4	5	6	7	8	9	10	11	12	13	14	15	16	17	18	19	20	21	22	23	24	25	26	27	28	29	30	31
-	-	-	-	-	-	-	-	-	-	-	-	-	-	-	-	-	-	-	-	-	-	-	-	-	-	-	-	-	-		

[Month : Next >>](#)

Rental rates - Gîte - Self Catering - Country House - 4 Person(s)

Rates	Night	Weekend	week	2 weeks	Month
 Low season	-	£111*	£178*	-	-
 Mid season	-	£111*	£263*	-	-
 High season	-	-	£312* (Saturday)	-	-

(Check-in day)

[Book now](#)

Booking conditions

• Reservation

- Payment made upon reservation : 50% of rental sum
- Payment balance : on handing over the keys
- Deposit required : £111\*

• rentals

- Service charges to be added
- Day tax included
- Cleaning charge levy on departure : £18\*
- Anticipated supplement for : - firewood

Accepted methods of payment

- Bank transfer (wire) • Cash

[▶ Book now](#)

[▶ Contact the owner](#)

Contact directly the property owners

[www.ihacom.co.uk](http://www.ihacom.co.uk)

Advert No.

24596

[>> Book now <<](#)

Contact

Spoken languages



\* Converted at the rate indicated : €100 = \$116.85 = £89

Advert No. 24596

[www.ihacom.co.uk](http://www.ihacom.co.uk)

