

Gîte - Self Catering Flensburg "Fischerhuus 1894"

Casual town house in one of the oldest streets of Flensburg! Enough space for a family holiday or a relaxing time alone or in pairs - lively city life with good retreat



Gîte - Self Catering - Charming House, detached, 2 floors, separate entrance, in a(an) Private property

Setting : conducive to shopping, cultural

Capacity : from 1 to 8 person(s)

Bedroom(s) : 4

Room(s) : 6

Flensburg - Schleswig-Holstein

Germany

Reservation : +49 (0) 46331899 (Germany)

Advert No. 38452

www.ihacom.co.uk



>> HOLIDAY LETTINGS

BOOK DIRECT WITH THE OWNERS

Gîte - Self Catering



Gîte - Self Catering - Charming House, detached, 2 floors, separate entrance, in a (an) Private property

- **Ideal for large families, group**
- **View :** town, rooftop, pedestrianized street
- **Setting :** conducive to shopping, cultural

" Four spacious bedrooms with each 2 beds and TV/DVD are waiting for you! Enjoy the spacious house on two floors with balcony and terrace. The dining area has a fireplace. There are 2 showers and 2 toilets. You have a parking place directly on the plot. The city centre, the port and the train station are reachable by foot in 5 to 10 minutes. "

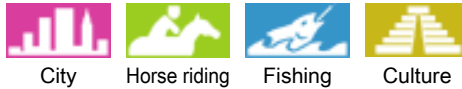
Assets

- **Parking :**
Parking uncovered : 2 off road.



bedroom

Surroundings & location



" We recommend you: a ride on the steam ship Alexandra, a trip to the ox Islands, visit the museums as Phänomena and Maritime Museum. Flensburg has beautiful town beaches Ostseebad, Solitude and Wassersleben. There are great things to discover by bike. In case of bad weather, the Campusbad or wellness offers in the Alten Meierhof. "

Leisure

- **Leisure activities less than 20 km / 12 miles :**

Bathing, pedalo, windsurfing, sailing, kite surfing, tennis, pathway, coastal/forest paths, hiking, glider (club), boat trips, horse trekking, mini-golf, skate board (ramps), ten-pin bowling, fishing, angling

- **Attractions and relaxation :**

Bar/pub, restaurant, exhibition centre, historical site, museum, theatre, cellar and wine tasting, casino, sauna

Surroundings

- **Locality :**

Heated swimming pool 0.3mi.
Sandy beach 2.5mi.
Public swimming pool 0.3mi.
Flying clubs 2.5mi.
Forest 1.25mi.
Marina 0.62mi.

- **Amenities :**

Town centre 0.5mi.
Bus stop / bus station 990'
Breadshop 0.5mi.
Local shops 0.62mi.
Supermarket 0.62mi.
High class retailers 0.62mi.
Hairdressing salon 0.62mi.
Post office 0.3mi.
Bank 0.5mi.
Cash point 0.3mi.
Chemist 0.5mi.
Hospital 1.5mi.
Dispensing clinic 1.5mi.



bedroom



bedroom



bathroom

Interior

- **Receive up to :**
from 1 to 8 person(s) (8 adults)
- **Liveable floor area :**
1,300 Sq.ft.
- **Interior layout :**
6 Room(s), 4 bedroom(s), 2 bathroom, 2 WC, living room 194 Sq.ft., separate kitchen, dining area, veranda
- **Sleeps - bed(s) :**
8 single bed(s), 1 possible extra bed(s)
- **Guest facilities :**
Fireplace, T.V., hi-fi system, DVD player, board games, internet access, wardrobe, Hanging wardrobe, hair dryer, central heating, Blinds, Double glazed
- **Appliances :**
Crockery/cutlery, kitchen utensils, electric coffee maker, electric kettle, toaster, electric cooker, electric hobs, oven, micro-wave oven, extractor hood, refrigerator, freezer, washing machine, vacuum cleaner, ironing board

Exterior

- **Ground surface :**
4,300 Sq.ft.
- **Outside accommodation :**
Covered terrace, balcony
- **Outside setting :**
Private courtyard 2,150 Sq.ft.
- **Outside amenities :**
BBQ, garden table(s), 8 garden seat(s)



kitchen

Services

- **Washing :**
Sheets supplement (1 X / per week +£1*), Towels supplement (1 X / per week +£2*), Blanket(s) supplement (1 X / per week +£2*), Pillows supplement (1 X / per week +£2*)
- **House :**
Cleaning on departure supplement (+£36*), Garden/swimming pool maintenance (1 X / per week), Parking

For your guidance

- **For your guidance**
No children under 3 years old
Non smoking rental, mobile telephone network coverage, personal transport advisable
Water : hot/cold
- **Handicapped people welcome**
Wheelchair access
Fitted out for the disabled : mobility, hard of hearing

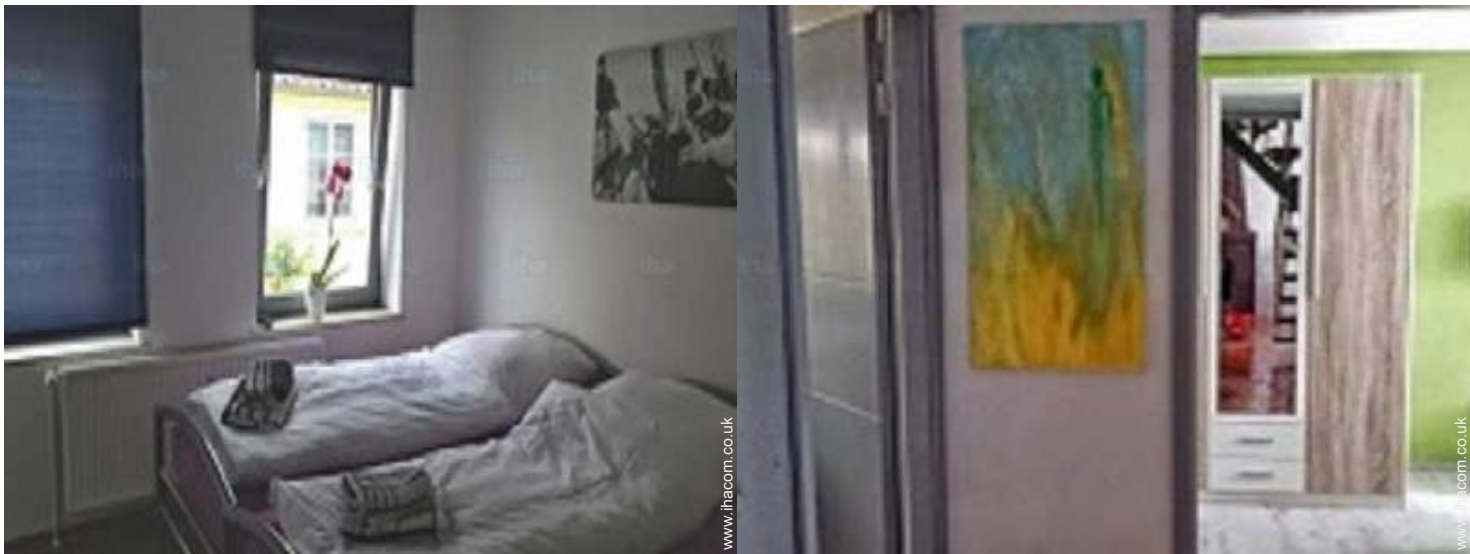


Outside accommodation

Photo album - 1



bedroom



bedroom

bedroom

Photo album - 2



bathroom



Outside accommodation

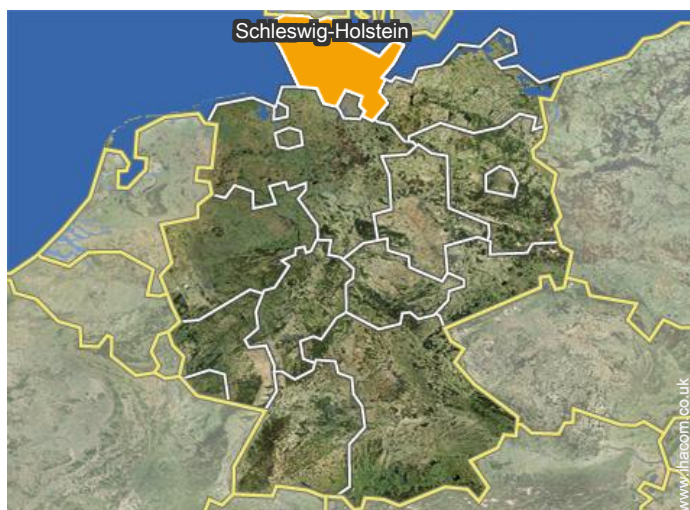


kitchen




dining area

Location



Location & Access

" A7 - B200 exit take direction FL Rude follow 8 min. (13.3 km) follow Husum str., take Munketoft to Mittelstrasse 5 min (2.2 km) Turn right onto Husumer str. (signs to Glücksburg/ Centre) 1.1 km 0. Continue on Munketoft 650 m 0 light turn right on Waizstraße. Turn right on flower St. turn right on Mittelstrasse. "

 GPS coordinates in degrees, minutes, seconds: Latitude 54°46'46"N - Longitude 9° 26'28"E ([Dwelling](#))

Address

→ Mittelstrasse 10
24937 Flensburg

• Motorway (junction) A7

→ Flensburg, Schleswig-Holstein, Germany
→ Distance : 2.5mi.
→ Time : 15'

• Train station Flensburg

→ Flensburg, Schleswig-Holstein, Germany
→ Distance : 0.62mi.
→ Time : 10'

• Schleswig : (24,3mi.)

• Glücksburg : (8mi.)

Contact

Spoken languages



Gîte - Self Catering
Schleswig-Holstein - Flensburg
"Fischerhuus 1894"

7

[Book now](#)

Availability calendar - from : march 2019

Mar	F	Sa	Su	M	Tu	W	Th	F	Sa	Su	M	Tu	W	Th	F	Sa	Su	M	Tu	W	Th	F	Sa	Su	M	Tu	W	Th	F	Sa	Su	
2019	1	2	3	4	5	6	7	8	9	10	11	12	13	14	15	16	17	18	19	20	21	22	23	24	25	26	27	28	29	30	31	

Apr	M	Tu	W	Th	F	Sa	Su	M	Tu	W	Th	F	Sa	Su	M	Tu	W	Th	F	Sa	Su	M	Tu							
2019	1	2	3	4	5	6	7	8	9	10	11	12	13	14	15	16	17	18	19	20	21	22	23	24	25	26	27	28	29	30
	-	-	-	-	-	-	-	-	-	-	-	-	-	-	-	-	-	-	-	-	-	-	-	-	-	-	-	-	-	-

May	W	Th	F	Sa	Su	M	Tu	W	Th	F	Sa	Su	M	Tu	W	Th	F	Sa	Su	M	Tu	W	Th	F							
2019	1	2	3	4	5	6	7	8	9	10	11	12	13	14	15	16	17	18	19	20	21	22	23	24	25	26	27	28	29	30	31
	-	-	-	-	-	-	-	-	-	-	-	-	-	-	-	-	-	-	-	-	-	-	-	-	-	-	-	-	-	-	

June	Sa	Su	M	Tu	W	Th	F	Sa	Su	M	Tu	W	Th	F	Sa	Su	M	Tu	W	Th	F	Sa	Su							
2019	1	2	3	4	5	6	7	8	9	10	11	12	13	14	15	16	17	18	19	20	21	22	23	24	25	26	27	28	29	30
	-	-	-	-	-	-	-	-	-	-	-	-	-	-	-	-	-	-	-	-	-	-	-	-	-	-	-	-	-	-

Jul	M	Tu	W	Th	F	Sa	Su	M	Tu	W	Th	F	Sa	Su	M	Tu	W	Th	F	Sa	Su	M	Tu	W							
2019	1	2	3	4	5	6	7	8	9	10	11	12	13	14	15	16	17	18	19	20	21	22	23	24	25	26	27	28	29	30	31
	-	-	-	-	-	-	-	-	-	-	-	-	-	-	-	-	-	-	-	-	-	-	-	-	-	-	-	-	-	-	

Aug	Th	F	Sa	Su	M	Tu	W	Th	F	Sa	Su	M	Tu	W	Th	F	Sa	Su	M	Tu	W	Th	F	Sa							
2019	1	2	3	4	5	6	7	8	9	10	11	12	13	14	15	16	17	18	19	20	21	22	23	24	25	26	27	28	29	30	31
	-	-	-	-	-	-	-	-	-	-	-	-	-	-	-	-	-	-	-	-	-	-	-	-	-	-	-	-	-	-	

Sep	Su	M	Tu	W	Th	F	Sa	Su	M	Tu	W	Th	F	Sa	Su	M	Tu	W	Th	F	Sa	Su	M							
2019	1	2	3	4	5	6	7	8	9	10	11	12	13	14	15	16	17	18	19	20	21	22	23	24	25	26	27	28	29	30
	-	-	-	-	-	-	-	-	-	-	-	-	-	-	-	-	-	-	-	-	-	-	-	-	-	-	-	-	-	-

Oct	Tu	W	Th	F	Sa	Su	M	Tu	W	Th	F	Sa	Su	M	Tu	W	Th	F	Sa	Su	M	Tu	W	Th							
2019	1	2	3	4	5	6	7	8	9	10	11	12	13	14	15	16	17	18	19	20	21	22	23	24	25	26	27	28	29	30	31
	-	-	-	-	-	-	-	-	-	-	-	-	-	-	-	-	-	-	-	-	-	-	-	-	-	-	-	-	-	-	

Nov	F	Sa	Su	M	Tu	W	Th	F	Sa	Su	M	Tu	W	Th	F	Sa	Su	M	Tu	W	Th	F	Sa							
2019	1	2	3	4	5	6	7	8	9	10	11	12	13	14	15	16	17	18	19	20	21	22	23	24	25	26	27	28	29	30
	-	-	-	-	-	-	-	-	-	-	-	-	-	-	-	-	-	-	-	-	-	-	-	-	-	-	-	-	-	-

Dec	Su	M	Tu	W	Th	F	Sa	Su	M	Tu	W	Th	F	Sa	Su	M	Tu	W	Th	F	Sa	Su	M	Tu							
2019	1	2	3	4	5	6	7	8	9	10	11	12	13	14	15	16	17	18	19	20	21	22	23	24	25	26	27	28	29	30	31
	-	-	-	-	-	-	-	-	-	-	-	-	-	-	-	-	-	-	-	-	-	-	-	-	-	-	-	-	-	-	

 Reserved

Availability calendar - from : december 2019




Jan	W	Th	F	Sa	Su	M	Tu	W	Th	F	Sa	Su	M	Tu	W	Th	F	Sa	Su	M	Tu	W	Th	F	Sa	Su	M	Tu	W	Th	F
2020	1	2	3	4	5	6	7	8	9	10	11	12	13	14	15	16	17	18	19	20	21	22	23	24	25	26	27	28	29	30	31
	-	-	-	-	-	-	-	-	-	-	-	-	-	-	-	-	-	-	-	-	-	-	-	-	-	-	-	-	-	-	-

Feb	Sa	Su	M	Tu	W	Th	F	Sa	Su	M	Tu	W	Th	F	Sa	Su	M	Tu	W	Th	F	Sa							
2020	1	2	3	4	5	6	7	8	9	10	11	12	13	14	15	16	17	18	19	20	21	22	23	24	25	26	27	28	29
	-	-	-	-	-	-	-	-	-	-	-	-	-	-	-	-	-	-	-	-	-	-	-	-	-	-	-	-	-

 Reserved

[Month : Next >>](#)

Rental rates - Gîte - Self Catering - Charming House - from 1 to 8 Person(s)

Rates	Night	Weekend	week	2 weeks	Month
 Low season	£85* ↓ > 2	-	-	-	-
 Mid season	£85* ↓ > 2	-	-	-	-
 High season	£85* ↓ > 2	-	-	-	-

↓ Reducing rates > Minimum Night

[Book now](#)

Booking conditions

- **Reservation**
→ Payment made upon reservation : 25% of rental sum
→ Payment balance : 2 weeks before the stay
- **rentals**
→ Service charges included
→ Day tax in addition
→ Cleaning charge levy on departure : £36*

[▶ Book now](#)

[▶ Contact the owner](#)

Accepted methods of payment

- Bank transfer (wire) • Cash

Contact directly the property owners

www.ihacom.co.uk

Advert No.

38452

[>> Book now <<](#)

Contact

Spoken languages



* Converted at the rate indicated : €100 = \$116.85 = £89

Advert No. 38452

www.ihacom.co.uk

