

# Gîte - Self Catering Durham "Finchale Abbey"



Gîte - Self Catering - Luxury Flat -  
Apartment 1st floor, shared entrance, in  
a(an) Former Farm 1 floor

Setting : ancient, picturesque

Capacity : from 1 to 6 person(s)

Bedroom(s) : 3

Room(s) : 7



VisitBritain (4 stars)

Durham - County Durham - North East  
England

Advert No. 51786

www.ihacom.co.uk



>> HOLIDAY LETTINGS

BOOK DIRECT WITH THE OWNERS

### Gîte - Self Catering



Gîte - Self Catering - Luxury Flat - Apartment 1st floor, shared entrance, in a (an) Former Farm 1 floor

- Ideal for family groups, group
- View : not overlooked, country side, garden/park, farmland, river, monument
- Setting : ancient, picturesque

### Assets

- Parking :  
Parking uncovered : 4 off road.

Benefits :  
Driving range



the flat

### Surroundings & location



Countryside

Golf

Ski

Fishing



Culture

### Leisure

- Leisure activities less than 20 km / 12 miles :

Golf, riding school, pathway, coastal/forest paths, hiking, rock climbing, boat trips, go-karting, ten-pin bowling, paintball, fishing

### Surroundings

- Locality :  
9 hole golf course 1.25mi.  
River 330'



living room



overall view



living room

## Interior

- **Receive up to :**

from 1 to 6 person(s)

- **Interior layout :**

7 Room(s), 3 bedroom(s), 1 bathroom, 2 WC, living room, separate kitchen, dining area

- **Sleeps - bed(s) :**

1 double bed(s), 1 super king-size bed(s), 3 single bed(s)

- **Guest facilities :**

Fireplace, T.V., hi-fi system, DVD player, board games, book collection, film collection, cable/satellite, internet access, wifi, wardrobe, cupboard, Hanging wardrobe, hair dryer, heated towel rail, power shower, central heating, Skylights, Curtains, Blinds, Double glazed, fire alarm, digipad entry gates

- **Appliances :**

Crockery/cutlery, kitchen utensils, cafetiere, electric kettle, toaster, oven, micro-wave oven, extractor hood, freezer, dish washer, washing machine, clothes dryer, vacuum cleaner, iron, ironing board

## Exterior

- **Outside setting :**

Garden, lawn, wooded park, woods, river

- **Outside amenities :**

Garden table(s)



master bedroom

## Services

- **Washing :**

Sheets, Towels, Linen, Blanket(s), Quilt(s), Pillows

- **House :**

Cleaning on departure, Parking

- **Personnel :**

Beauty treatments supplement, Massage supplement

## For your guidance

- **For your guidance**

Children welcome

Pets accepted

Present on site : farm animals

Non smoking rental, mobile telephone network coverage, personal transport advisable

Water : hot/cold

Local voltage supply : 220-240V / 50Hz

Electricity supply : mains



master bedroom

Photo album - 1



the flat



overall view



living room



living room



master bedroom

Photo album - 2



master bedroom



bedroom



Sleeps - bed(s)



kitchen



kitchen



bathroom



bathroom



the property

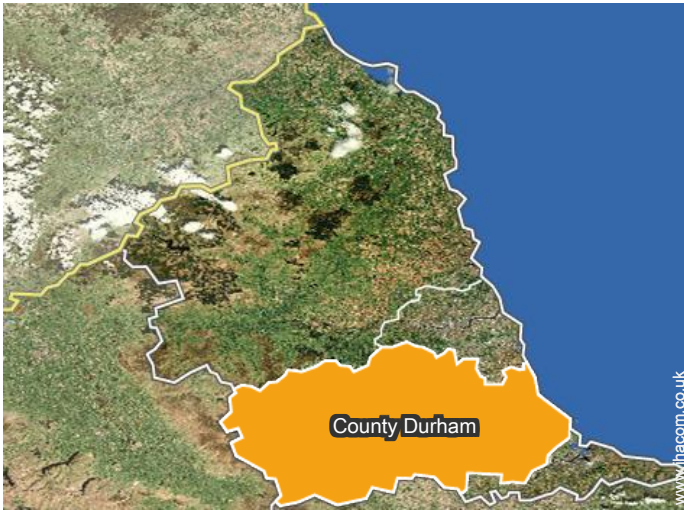


view from the kitchen



Countryside

## Location



## Location & Access



GPS coordinates in degrees, minutes, seconds: Latitude 54°49'7"N - Longitude 1°32'26"W ([Dwelling](#))

### Address

→ Woodland View Finchale Abbey Car  
DH1 Durham

### • Train station

→ Durham, County Durham, North East,  
England  
→ Distance : 4.5mi.  
→ Time : 10'

### • Motorway (junction) 63

→ Chester-le-Street, County Durham, North  
East, England  
→ Distance : 2.5mi.  
→ Time : 10'

### • Airport

→ Newcastle upon Tyne, Tyne and Wear,  
North East, England  
→ Distance : 24,3mi.

→ Time : 40'

- Durham : (3mi.)
- Newcastle upon Tyne : (15mi.)
- Barnard Castle : (25mi.)

## Contact

Spoken  
languages



Gîte - Self Catering  
Durham - England  
"Finchale Abbey"

[Book now](#)

Availability calendar - from : october 2020

Oct	Th	F	Sa	Su	M	Tu	W	Th	F	Sa	Su	M	Tu	W	Th	F	Sa	Su	M	Tu	W	Th	F	Sa	Su	M	Tu	W	Th	F	Sa
2020	1	2	3	4	5	6	7	8	9	10	11	12	13	14	15	16	17	18	19	20	21	22	23	24	25	26	27	28	29	30	31

Nov	Su	M	Tu	W	Th	F	Sa	Su	M	Tu	W	Th	F	Sa	Su	M	Tu	W	Th	F	Sa	Su	M							
2020	1	2	3	4	5	6	7	8	9	10	11	12	13	14	15	16	17	18	19	20	21	22	23	24	25	26	27	28	29	30
	-	-	-	-	-	-	-	-	-	-	-	-	-	-	-	-	-	-	-	-	-	-	-	-	-	-	-	-	-	

Dec	Tu	W	Th	F	Sa	Su	M	Tu	W	Th	F	Sa	Su	M	Tu	W	Th	F	Sa	Su	M	Tu	W	Th	F	Sa	Su	M	Tu	W	Th
2020	1	2	3	4	5	6	7	8	9	10	11	12	13	14	15	16	17	18	19	20	21	22	23	24	25	26	27	28	29	30	31
	-	-	-	-	-	-	-	-	-	-	-	-	-	-	-	-	-	-	-	-	-	-	-	-	-	-	-	-	-	-	

Jan	F	Sa	Su	M	Tu	W	Th	F	Sa	Su	M	Tu	W	Th	F	Sa	Su	M	Tu	W	Th	F	Sa	Su	M	Tu	W	Th	F	Sa	Su
2021	1	2	3	4	5	6	7	8	9	10	11	12	13	14	15	16	17	18	19	20	21	22	23	24	25	26	27	28	29	30	31
	-	-	-	-	-	-	-	-	-	-	-	-	-	-	-	-	-	-	-	-	-	-	-	-	-	-	-	-	-	-	

Feb	M	Tu	W	Th	F	Sa	Su	M	Tu	W	Th	F	Sa	Su	M	Tu	W	Th	F	Sa	Su							
2021	1	2	3	4	5	6	7	8	9	10	11	12	13	14	15	16	17	18	19	20	21	22	23	24	25	26	27	28
	-	-	-	-	-	-	-	-	-	-	-	-	-	-	-	-	-	-	-	-	-	-	-	-	-	-	-	-

Mar	M	Tu	W	Th	F	Sa	Su	M	Tu	W	Th	F	Sa	Su	M	Tu	W	Th	F	Sa	Su	M	Tu	W	Th	F	Sa	Su	M	Tu	W
2021	1	2	3	4	5	6	7	8	9	10	11	12	13	14	15	16	17	18	19	20	21	22	23	24	25	26	27	28	29	30	31
	-	-	-	-	-	-	-	-	-	-	-	-	-	-	-	-	-	-	-	-	-	-	-	-	-	-	-	-	-		

Apr	Th	F	Sa	Su	M	Tu	W	Th	F	Sa	Su	M	Tu	W	Th	F	Sa	Su	M	Tu	W	Th	F	Sa	Su	M	Tu	W	Th	F
2021	1	2	3	4	5	6	7	8	9	10	11	12	13	14	15	16	17	18	19	20	21	22	23	24	25	26	27	28	29	30
	-	-	-	-	-	-	-	-	-	-	-	-	-	-	-	-	-	-	-	-	-	-	-	-	-	-	-	-	-	

May	Sa	Su	M	Tu	W	Th	F	Sa	Su	M	Tu	W	Th	F	Sa	Su	M	Tu	W	Th	F	Sa	Su	M	Tu	W	Th	F	Sa	Su	M
2021	1	2	3	4	5	6	7	8	9	10	11	12	13	14	15	16	17	18	19	20	21	22	23	24	25	26	27	28	29	30	31
	-	-	-	-	-	-	-	-	-	-	-	-	-	-	-	-	-	-	-	-	-	-	-	-	-	-	-	-	-		

June	Tu	W	Th	F	Sa	Su	M	Tu	W	Th	F	Sa	Su	M	Tu	W	Th	F	Sa	Su	M	Tu	W							
2021	1	2	3	4	5	6	7	8	9	10	11	12	13	14	15	16	17	18	19	20	21	22	23	24	25	26	27	28	29	30
	-	-	-	-	-	-	-	-	-	-	-	-	-	-	-	-	-	-	-	-	-	-	-	-	-	-	-	-	-	

Jul	Th	F	Sa	Su	M	Tu	W	Th	F	Sa	Su	M	Tu	W	Th	F	Sa	Su	M	Tu	W	Th	F	Sa	Su	M	Tu	W	Th	F	Sa
2021	1	2	3	4	5	6	7	8	9	10	11	12	13	14	15	16	17	18	19	20	21	22	23	24	25	26	27	28	29	30	31
	-	-	-	-	-	-	-	-	-	-	-	-	-	-	-	-	-	-	-	-	-	-	-	-	-	-	-	-	-		



Gîte - Self Catering  
County Durham - North East  
"Finchale Abbey"

8

[Book now](#)




Availability calendar - from : july 2021

Aug	Su	M	Tu	W	Th	F	Sa	Su	M	Tu	W	Th	F	Sa	Su	M	Tu	W	Th	F	Sa	Su	M	Tu							
2021	1	2	3	4	5	6	7	8	9	10	11	12	13	14	15	16	17	18	19	20	21	22	23	24	25	26	27	28	29	30	31
-	-	-	-	-	-	-	-	-	-	-	-	-	-	-	-	-	-	-	-	-	-	-	-	-	-	-	-	-	-	-	

Sep	W	Th	F	Sa	Su	M	Tu	W	Th	F	Sa	Su	M	Tu	W	Th	F	Sa	Su	M	Tu	W	Th							
2021	1	2	3	4	5	6	7	8	9	10	11	12	13	14	15	16	17	18	19	20	21	22	23	24	25	26	27	28	29	30
-	-	-	-	-	-	-	-	-	-	-	-	-	-	-	-	-	-	-	-	-	-	-	-	-	-	-	-	-	-	-

Month : Next >>

Rental rates - Gîte - Self Catering - Luxury Flat - Apartment - from 1 to 6 Person(s)

Rates	Night	Weekend	week	2 weeks	Month
 Low season	£200 > 3	-	-	-	-
 Mid season	£225 > 3	-	-	-	-
 High season	£300 > 3	-	-	-	-

> Minimum Night

[Book now](#)

Booking conditions

• Reservation

→ Payment made upon reservation :  
20% of rental sum  
→ Payment balance :  
on handing over the keys

• rentals

→ Service charges included  
→ Cleaning charge on departure included  
→ Anticipated supplement for :  
- animals

[▶ Book now](#)

[▶ Contact the owner](#)

Accepted methods of payment

• Visa/Delta/Electron • Switch/Maestro •  
Bank transfer (wire) • MasterCard/  
EuroCard • Solo • Cirrus • American  
Express • JCB • Diners Club • Cheque •  
Bankers draft • PayPal • Travellers  
Cheques • Cash

Contact directly the property owners

[www.ihacom.co.uk](http://www.ihacom.co.uk)  
Advert No.  
51786  
>> Book now <<

Contact

Spoken languages



Advert No. 51786

[www.ihacom.co.uk](http://www.ihacom.co.uk)

