

Gîte - Self Catering Chexbres Charming Wooden Chalet



Gîte - Self Catering - Charming
Wooden Chalet, detached, single
storey, separate entrance, in a(an)
Private property

Setting : quiet, country setting

Capacity : from 2 to 6 person(s)

Bedroom(s) : 2

Room(s) : 3

Chexbres - Canton of Vaud

Switzerland

Reservation : +41 (0) 21 946 28 83 (Switzerland)

Advert No. 18825

www.ihacom.co.uk



>> HOLIDAY LETTINGS

BOOK DIRECT WITH THE OWNERS

Gîte - Self Catering



Gîte - Self Catering - Charming Wooden Chalet, detached, single storey, separate entrance, in a(an) Private property

- **Ideal for all age groups, family**
- **View** : not overlooked, country side, meadow, forest, square, nightlights
- **Setting** : quiet, country setting

Assets

- **Parking** :
Parking uncovered : 2 off road.

Surroundings & location



Countryside Golf Horse riding Fishing

Leisure

- **Leisure activities less than 20 km / 12 miles** :

Alpine skiing, luge (run), bathing, pedalo, windsurfing, golf, tennis, riding school, pathway, coastal/forest paths, hiking, climbing, boat trips, horse trekking, fishing, pétanque pitch

- **Supervised** :

Riding school

- **Attractions and relaxation** :

Bar/pub, discotheque, restaurant, cinema, park and garden, museum, theatre, antiques & bric-a-brac, local craftshop, cellar and wine tasting, Bio farm

Surroundings

- **Locality** :

18 hole golf course 3mi.
River 1.85mi.
Lake 3mi.
Forest <165'
Mountain range 12.5mi.

- **Amenities** :

Village centre 2.5mi.
Town centre 6mi.
Breadshop 2.5mi.
Local shops 3mi.
Supermarket 3mi.
Post office 3mi.
Bank 3mi.
Chemist 3mi.



WC



interior



interior



WC

Interior

- **Receive up to :**
from 2 to 6 person(s) (4 adults, 2 children)
- **Liveable floor area :**
700 Sq.ft.
- **Interior layout :**
3 Room(s), 2 bedroom(s), 1 shower room, 1 WC, living room 300 Sq.ft., Kitchen Area
- **Sleeps - bed(s) :**
1 double bed(s), 1 single bed(s), 2 bunk beds, 1 possible extra bed(s)
- **Guest facilities :**
Wardrobe, Hanging wardrobe, wood-burning stove, Double glazed
- **Appliances :**
Crockery/cutlery, kitchen utensils, cafetiere, fondue set, gas cooker, refridgerator

Exterior

- **Ground surface :**
0.37 acre
- **Outside accommodation :**
Terrace 323 Sq.ft., traditional tent
- **Outside setting :**
Wooded park 2,150 Sq.ft., woods 1.5 acre, wells/spring, fountain
- **Outside amenities :**
BBQ, garden table(s), garden seat(s)



master bedroom

Services

- **Washing :**
Sheets, Towels supplement, Linen, Blanket (s), Quilt(s), Pillows
- **House :**
Cleaning on departure supplement (+£47*), Parking

For your guidance

- **For your guidance**
Children welcome
Pets accepted under certain conditions (ask the owner)
Non smoking rental
Water : hot/cold
Electricity supply : individual generator
- **Handicapped people welcome**
Wheelchair access



master bedroom

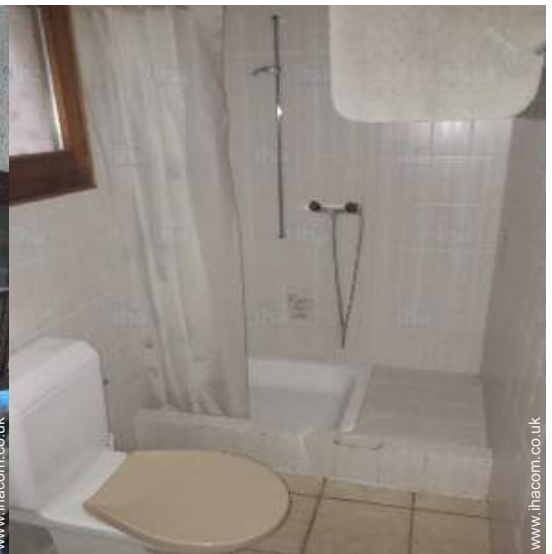
Photo album - 1



interior



interior



WC

Photo album - 2



WC



master bedroom



master bedroom

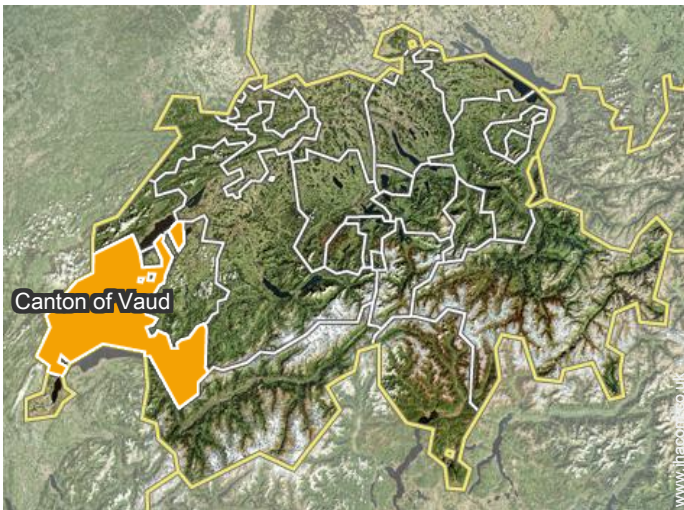


child's room



child's room

Location



Location & Access



GPS coordinates in degrees, minutes, seconds: Latitude 46°29'36"N - Longitude 6°48'16"E ([Dwelling](#))

Address

→ Chemin de Longive 2b
1071 Chexbres

• Motorway (junction) A9

→ Puidoux, Canton of Vaud, Switzerland
→ Distance : 2.5mi.

• Train station Vevey

→ Vevey, Canton of Vaud, Switzerland
→ Distance : 6mi.

• Airport Genève

→ Geneva, Canton of Geneva, Switzerland
→ Distance : 40mi.

• Lausanne : (6mi.)

• Vevey : (6mi.)

• Montreux : (7,5mi.)

Contact

Spoken languages



Gîte - Self Catering
Canton of Vaud - Chexbres
Charming Wooden Chalet

7
[Book now](#)

Availability calendar - from : may 2021

May	Sa	Su	M	Tu	W	Th	F	Sa	Su	M	Tu	W	Th	F	Sa	Su	M	Tu	W	Th	F	Sa	Su	M							
2021	1	2	3	4	5	6	7	8	9	10	11	12	13	14	15	16	17	18	19	20	21	22	23	24	25	26	27	28	29	30	31
										-	-	-	-	-	-	-	-	-	-	-	-	-	-	-	-	-	-	-	-		

June	Tu	W	Th	F	Sa	Su	M	Tu	W	Th	F	Sa	Su	M	Tu	W	Th	F	Sa	Su	M	Tu	W							
2021	1	2	3	4	5	6	7	8	9	10	11	12	13	14	15	16	17	18	19	20	21	22	23	24	25	26	27	28	29	30
	-	-	-	-	-	-	-	-	-	-	-	-	-	-	-	-	-	-	-	-	-	-	-	-	-	-	-	-	-	

Jul	Th	F	Sa	Su	M	Tu	W	Th	F	Sa	Su	M	Tu	W	Th	F	Sa	Su	M	Tu	W	Th	F	Sa							
2021	1	2	3	4	5	6	7	8	9	10	11	12	13	14	15	16	17	18	19	20	21	22	23	24	25	26	27	28	29	30	31
	-	-	-	-	-	-	-	-	-	-	-	-	-	-	-	-	-	-	-	-	-	-	-	-	-	-	-	-	-		

Aug	Su	M	Tu	W	Th	F	Sa	Su	M	Tu	W	Th	F	Sa	Su	M	Tu	W	Th	F	Sa	Su	M	Tu	W	Th	F	Sa	Su	M	Tu
2021	1	2	3	4	5	6	7	8	9	10	11	12	13	14	15	16	17	18	19	20	21	22	23	24	25	26	27	28	29	30	31
	-	-	-	-	-	-	-	-	-	-	-	-	-	-	-	-	-	-	-	-	-	-	-	-	-	-	-	-	-	-	

Sep	W	Th	F	Sa	Su	M	Tu	W	Th	F	Sa	Su	M	Tu	W	Th	F	Sa	Su	M	Tu	W	Th							
2021	1	2	3	4	5	6	7	8	9	10	11	12	13	14	15	16	17	18	19	20	21	22	23	24	25	26	27	28	29	30
	-	-	-	-	-	-	-	-	-	-	-	-	-	-	-	-	-	-	-	-	-	-	-	-	-	-	-	-	-	

Oct	F	Sa	Su	M	Tu	W	Th	F	Sa	Su	M	Tu	W	Th	F	Sa	Su	M	Tu	W	Th	F	Sa	Su							
2021	1	2	3	4	5	6	7	8	9	10	11	12	13	14	15	16	17	18	19	20	21	22	23	24	25	26	27	28	29	30	31
	-	-	-	-	-	-	-	-	-	-	-	-	-	-	-	-	-	-	-	-	-	-	-	-	-	-	-	-	-		

Nov	M	Tu	W	Th	F	Sa	Su	M	Tu	W	Th	F	Sa	Su	M	Tu	W	Th	F	Sa	Su	M	Tu	W	Th	F	Sa	Su	M	Tu
2021	1	2	3	4	5	6	7	8	9	10	11	12	13	14	15	16	17	18	19	20	21	22	23	24	25	26	27	28	29	30
	-	-	-	-	-	-	-	-	-	-	-	-	-	-	-	-	-	-	-	-	-	-	-	-	-	-	-	-	-	

Dec	W	Th	F	Sa	Su	M	Tu	W	Th	F	Sa	Su	M	Tu	W	Th	F	Sa	Su	M	Tu	W	Th	F	Sa	Su	M	Tu	W	Th	F
2021	1	2	3	4	5	6	7	8	9	10	11	12	13	14	15	16	17	18	19	20	21	22	23	24	25	26	27	28	29	30	31
	-	-	-	-	-	-	-	-	-	-	-	-	-	-	-	-	-	-	-	-	-	-	-	-	-	-	-	-	-	-	

Jan	Sa	Su	M	Tu	W	Th	F	Sa	Su	M	Tu	W	Th	F	Sa	Su	M	Tu	W	Th	F	Sa	Su	M	Tu	W	Th	F	Sa	Su	M
2022	1	2	3	4	5	6	7	8	9	10	11	12	13	14	15	16	17	18	19	20	21	22	23	24	25	26	27	28	29	30	31
	-	-	-	-	-	-	-	-	-	-	-	-	-	-	-	-	-	-	-	-	-	-	-	-	-	-	-	-	-	-	

Feb	Tu	W	Th	F	Sa	Su	M	Tu	W	Th	F	Sa	Su	M	Tu	W	Th	F	Sa	Su	M							
2022	1	2	3	4	5	6	7	8	9	10	11	12	13	14	15	16	17	18	19	20	21	22	23	24	25	26	27	28
	-	-	-	-	-	-	-	-	-	-	-	-	-	-	-	-	-	-	-	-	-	-	-	-	-	-	-	

 Reserved



Gîte - Self Catering
Canton of Vaud - Switzerland
Charming Wooden Chalet

8
[Book now](#)

Availability calendar - from : february 2022

Mar	Tu	W	Th	F	Sa	Su	M	Tu	W	Th	F	Sa	Su	M	Tu	W	Th	F	Sa	Su	M	Tu	W	Th							
2022	1	2	3	4	5	6	7	8	9	10	11	12	13	14	15	16	17	18	19	20	21	22	23	24	25	26	27	28	29	30	31
-	-	-	-	-	-	-	-	-	-	-	-	-	-	-	-	-	-	-	-	-	-	-	-	-	-	-	-	-	-	-	

Apr	F	Sa	Su	M	Tu	W	Th	F	Sa	Su	M	Tu	W	Th	F	Sa	Su	M	Tu	W	Th	F	Sa							
2022	1	2	3	4	5	6	7	8	9	10	11	12	13	14	15	16	17	18	19	20	21	22	23	24	25	26	27	28	29	30
-	-	-	-	-	-	-	-	-	-	-	-	-	-	-	-	-	-	-	-	-	-	-	-	-	-	-	-	-	-	

Reserved

[Month : Next >>](#)

Rental rates - Gîte - Self Catering - Charming Wooden Chalet - from 2 to 6 Person(s)

Rates	Night	Weekend	week	2 weeks	Month
<input type="checkbox"/> Low season	-	-	£393* (Saturday)	-	-
<input type="checkbox"/> Mid season	-	-	£432* (Saturday)	-	-
<input type="checkbox"/> High season	-	-	£432* (Saturday)	-	-

(Check-in day)

[Book now](#)

Booking conditions

• Reservation

→ Payment made upon reservation :
45% of rental sum
→ Payment balance :
on handing over the keys

• rentals

→ Service charges included
→ Day tax in addition

Accepted methods of payment

• Bank transfer (wire) • Cash

[▶ Book now](#)

[▶ Contact the owner](#)

Contact directly the property owners

www.ihacom.co.uk

Advert No.

18825

[>> Book now <<](#)

Contact

Spoken languages



* Converted at the rate indicated : €100 = \$110 = £91

Advert No. 18825

www.ihacom.co.uk

