

# Gîte - Self Catering Bilieu "Le Belvedere du Lac"



Gîte - Self Catering - Former Priory,  
detached, 2 floors, separate entrance, in  
a(an) Charming Property

Setting : lakeside, quiet

Capacity : from 2 to 14 person(s)

Bedroom(s) : 5

Room(s) : 10



Meublés de Tourisme (3 stars)

Bilieu - Isère (38) - Rhône-Alpes

France

Reservation : +33 (0) 6 80 44 09 30 (France)

Advert No. 42951

www.ihacom.co.uk



>> HOLIDAY LETTINGS

BOOK DIRECT WITH THE OWNERS

## Gîte - Self Catering



Gîte - Self Catering - Former Priory, detached, 2 floors, separate entrance, in a (an) Charming Property

- **Ideal for family groups, seminar**
- **View :** panoramic, unobscured, dominant, mountain, lake, fantastic sunset
- **Setting :** lakeside, quiet
- **Exposure :** South

## Assets

- **Parking :**  
Parking uncovered : internal.
- **Advantages :**  
Ski locker, billiard table, ping-pong table, horses and riding equipment
- **baby equipment :**  
Baby chair, baby potty

**Benefits :**  
Stable(s)



## Surroundings & location



Mountain



Horse riding



Fishing

### Leisure

- **Leisure activities less than 20 km / 12 miles :**

Bathing, pedalo, water skiing, windsurfing, canoeing, tennis, squash, riding school, pony club, pathway, coastal/forest paths, hiking, mountain bike (path), horse-drawn carriage, horse trekking, skate board (ramps), volleyball, fishing, angling

- **Supervised :**

Sailing school, tennis school, riding school

- **Attractions and relaxation :**

Bar/pub, restaurant, cinema, park and garden, zoo/animal park, nature reserve, exhibition centre, historical site, museum, festivals, local craftshop, cellar and wine tasting, Bio farm

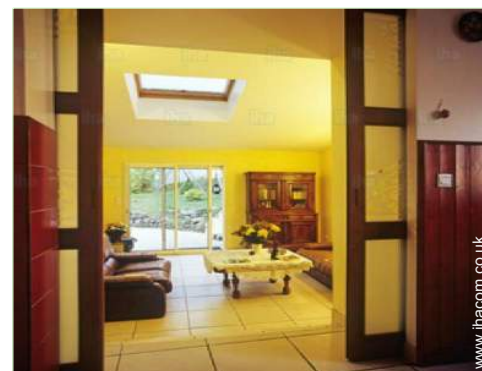
### Surroundings

- **Locality :**

Ski slopes 18.5mi.  
Ice skating rink 18.5mi.  
Shingle beach 0.5mi.  
Public swimming pool 6mi.  
Public tennis court 0.62mi.  
18 hole golf course 31mi.  
Watersports centre 0.62mi.  
Lake 0.5mi.  
Mountain range 15.5mi.  
Via ferrata-alpinism 18.5mi.

- **Amenities :**

Village centre 660'  
Bus stop / bus station 660'  
Bike/mountain bike hire 0.62mi.  
Breadshop 660'  
Caterer 4.5mi.  
Local shops 660'  
Supermarket 4.5mi.  
High class retailers 6mi.  
Hairdressing salon 6mi.  
Post office 0.62mi.  
Bank 0.62mi.  
Cash point 0.62mi.  
Chemist 0.62mi.  
Doctor 0.62mi.  
Nurse 0.62mi.  
Hospital 6mi.



view from the living room





view from the dining-room

### Interior

- **Receive up to :**

from 2 to 14 person(s)

- **Liveable floor area :**

2,150 Sq.ft.

- **Interior layout :**

10 Room(s), 5 bedroom(s), 2 bathroom, 2 WC, living room 650 Sq.ft., sitting room 270 Sq.ft., separate kitchen, dining room, dining area, cosy nook, mezzanine, tv room, music room, games room, reception hall, study, laundry room, pantry

- **Sleeps - bed(s) :**

5 double bed(s), 1 sofa bed(s) 2 pers, 4 single bed(s), 1 baby cot(s)

- **Guest facilities :**

Fireplace, T.V., hi-fi system, DVD player, book collection, t.v points, internet access, high speed internet access, wifi, wardrobe, hair dryer, heated towel rail, mobile cool air fan, central heating, wood-burning stove, Glazed in area, Skylights, Curtains, Blinds, Double glazed, electric shutters

- **Appliances :**

Crockery/cutlery, kitchen utensils, cafetiere, electric coffee maker, electric kettle, toaster, food processor, meat grill, electric hobs, oven, micro-wave oven, extractor hood, refridgerator, freezer, dish washer, washing machine, clothes dryer, vacuum cleaner, iron, ironing board

### Exterior

- **Ground surface :**

0.37 acre

- **Outside accommodation :**

Terrace 600 Sq.ft.

- **Outside setting :**

Private courtyard > 0.25 acre, landscaped garden, lawn, ornamental lake

- **Outside amenities :**

BBQ, garden table(s), 20 garden seat(s), parasol, child's swing



view from the kitchen

### Services

- **Washing :**

Sheets, Towels, Linen, Blanket(s), Quilt(s), Pillows

- **House :**

Cleaning on departure supplement (+£134\*)

- **Personnel :**

Baby sitting supplement

### For your guidance

- **For your guidance**

Children welcome

Pets accepted

Present on site : equine animals

Non smoking rental, mobile telephone network coverage, personal transport advisable

Water : hot/cold

Local voltage supply : 220-240V / 50Hz

Electricity supply : mains



view from the kitchen

Photo album - 1



view from the living room



view from the dining-room



view from the kitchen

Photo album - 2



view from the kitchen

view from the bedroom



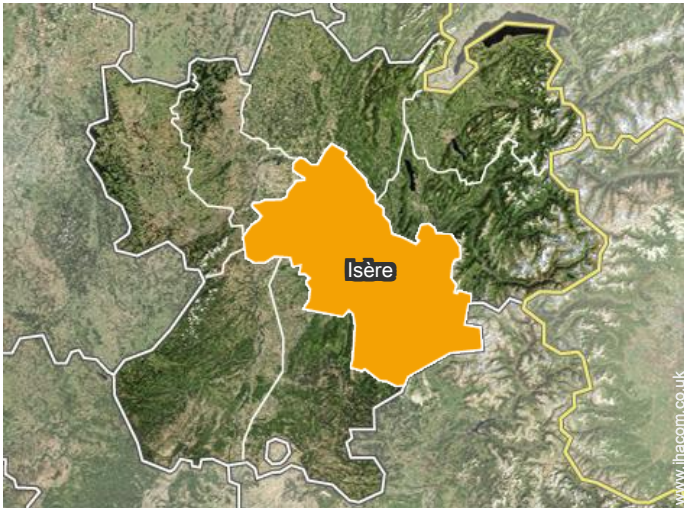
view from the bedroom



Photo album - 3



## Location



## Location & Access



GPS coordinates in degrees, minutes, seconds: Latitude 45°26'46"N - Longitude 5°32'58"E ([Dwelling](#))

### Address

→ CH DU SABOT DE CURE  
38850 Bilieu

- Voiron : (4.5mi.)
- Grenoble : (23,6mi.)
- Lyon : (40mi.)

## Contact

Spoken languages



Gîte - Self Catering  
Isère - Rhône-Alpes  
"Le Belvedere du Lac"

[Book now](#)

Availability calendar - from : january 2018

Jan	M	Tu	W	Th	F	Sa	Su	M	Tu	W	Th	F	Sa	Su	M	Tu	W	Th	F	Sa	Su	M	Tu	W							
2018	1	2	3	4	5	6	7	8	9	10	11	12	13	14	15	16	17	18	19	20	21	22	23	24	25	26	27	28	29	30	31
																-	-	-	-	-	-	-	-	-	-	-	-	-	-	-	

Feb	Th	F	Sa	Su	M	Tu	W	Th	F	Sa	Su	M	Tu	W	Th	F	Sa	Su	M	Tu	W							
2018	1	2	3	4	5	6	7	8	9	10	11	12	13	14	15	16	17	18	19	20	21	22	23	24	25	26	27	28
	-	-	-	-	-	-	-	-	-	-	-	-	-	-	-	-	-	-	-	-	-	-	-	-	-	-	-	-

Mar	Th	F	Sa	Su	M	Tu	W	Th	F	Sa	Su	M	Tu	W	Th	F	Sa	Su	M	Tu	W	Th	F	Sa							
2018	1	2	3	4	5	6	7	8	9	10	11	12	13	14	15	16	17	18	19	20	21	22	23	24	25	26	27	28	29	30	31
	-	-	-	-	-	-	-	-	-	-	-	-	-	-	-	-	-	-	-	-	-	-	-	-	-	-	-	-	-	-	

Apr	Su	M	Tu	W	Th	F	Sa	Su	M	Tu	W	Th	F	Sa	Su	M	Tu	W	Th	F	Sa	Su	M							
2018	1	2	3	4	5	6	7	8	9	10	11	12	13	14	15	16	17	18	19	20	21	22	23	24	25	26	27	28	29	30
	-	-	-	-	-	-	-	-	-	-	-	-	-	-	-	-	-	-	-	-	-	-	-	-	-	-	-	-	-	-

May	Tu	W	Th	F	Sa	Su	M	Tu	W	Th	F	Sa	Su	M	Tu	W	Th	F	Sa	Su	M	Tu	W	Th							
2018	1	2	3	4	5	6	7	8	9	10	11	12	13	14	15	16	17	18	19	20	21	22	23	24	25	26	27	28	29	30	31
	-	-	-	-	-	-	-	-	-	-	-	-	-	-	-	-	-	-	-	-	-	-	-	-	-	-	-	-	-	-	

June	F	Sa	Su	M	Tu	W	Th	F	Sa	Su	M	Tu	W	Th	F	Sa	Su	M	Tu	W	Th	F	Sa							
2018	1	2	3	4	5	6	7	8	9	10	11	12	13	14	15	16	17	18	19	20	21	22	23	24	25	26	27	28	29	30
	-	-	-	-	-	-	-	-	-	-	-	-	-	-	-	-	-	-	-	-	-	-	-	-	-	-	-	-	-	-

Jul	Su	M	Tu	W	Th	F	Sa	Su	M	Tu	W	Th	F	Sa	Su	M	Tu	W	Th	F	Sa	Su	M	Tu							
2018	1	2	3	4	5	6	7	8	9	10	11	12	13	14	15	16	17	18	19	20	21	22	23	24	25	26	27	28	29	30	31
	-	-	-	-	-	-	-	-	-	-	-	-	-	-	-	-	-	-	-	-	-	-	-	-	-	-	-	-	-	-	

Aug	W	Th	F	Sa	Su	M	Tu	W	Th	F	Sa	Su	M	Tu	W	Th	F	Sa	Su	M	Tu	W	Th	F							
2018	1	2	3	4	5	6	7	8	9	10	11	12	13	14	15	16	17	18	19	20	21	22	23	24	25	26	27	28	29	30	31
	-	-	-	-	-	-	-	-	-	-	-	-	-	-	-	-	-	-	-	-	-	-	-	-	-	-	-	-	-	-	

Sep	Sa	Su	M	Tu	W	Th	F	Sa	Su	M	Tu	W	Th	F	Sa	Su	M	Tu	W	Th	F	Sa	Su							
2018	1	2	3	4	5	6	7	8	9	10	11	12	13	14	15	16	17	18	19	20	21	22	23	24	25	26	27	28	29	30
	-	-	-	-	-	-	-	-	-	-	-	-	-	-	-	-	-	-	-	-	-	-	-	-	-	-	-	-	-	-

Oct	M	Tu	W	Th	F	Sa	Su	M	Tu	W	Th	F	Sa	Su	M	Tu	W	Th	F	Sa	Su	M	Tu	W							
2018	1	2	3	4	5	6	7	8	9	10	11	12	13	14	15	16	17	18	19	20	21	22	23	24	25	26	27	28	29	30	31
	-	-	-	-	-	-	-	-	-	-	-	-	-	-	-	-	-	-	-	-	-	-	-	-	-	-	-	-	-	-	

 Reserved





Gîte - Self Catering  
Bilieu - France  
"Le Belvedere du Lac"

9

[Book now](#)

Availability calendar - from : october 2018

Nov	Th	F	Sa	Su	M	Tu	W	Th	F	Sa	Su	M	Tu	W	Th	F	Sa	Su	M	Tu	W	Th	F							
2018	1	2	3	4	5	6	7	8	9	10	11	12	13	14	15	16	17	18	19	20	21	22	23	24	25	26	27	28	29	30
	-	-	-	-	-	-	-	-	-	-	-	-	-	-	-	-	-	-	-	-	-	-	-	-	-	-	-	-	-	

Dec	Sa	Su	M	Tu	W	Th	F	Sa	Su	M	Tu	W	Th	F	Sa	Su	M	Tu	W	Th	F	Sa	Su	M							
2018	1	2	3	4	5	6	7	8	9	10	11	12	13	14	15	16	17	18	19	20	21	22	23	24	25	26	27	28	29	30	31
	-	-	-	-	-	-	-	-	-	-	-	-	-	-	-	-	-	-	-	-	-	-	-	-	-	-	-	-	-		

Reserved

[Month : Next >>](#)

Rental rates - Gîte - Self Catering - Former Priory - from 2 to 14 Person(s)

Rates	Night	Weekend	week	2 weeks	Month
<input type="checkbox"/> Low season	-	£448* (Thursday)	£627*	-	-
<input type="checkbox"/> High season	-	-	£851* (Saturday)	-	-

(Check-in day)

[Book now](#)

Booking conditions

• Reservation

- Payment made upon reservation : 25% of rental sum
- Payment balance : on handing over the keys
- Deposit required : £896\*

• rentals

- Service charges included
- Day tax included
- Cleaning charge levy on departure : £134\*
- Anticipated supplement for :  
- firewood

Accepted methods of payment

- Cheque

[▶ Book now](#)

[▶ Contact the owner](#)

Contact directly the property owners

[www.ihacom.co.uk](http://www.ihacom.co.uk)

Advert No.

42951

[>> Book now <<](#)

Contact

Spoken languages



\* Converted at the rate indicated : €100 = \$117.29 = £89.59

Advert No. 42951

[www.ihacom.co.uk](http://www.ihacom.co.uk)



[>> HOLIDAY LETTINGS](#)

BOOK DIRECT WITH THE OWNERS