

# Gîte - Self Catering Vallès Oriental "La Polvoreria"

Farmhouse in Bigues i Riells for a maximum of 10 people. Ideal for 2/3 families with children. Just 35 km away from Barcelona and the closest beaches.



Gîte - Self Catering - Typical House, detached, single storey, separate entrance, in a(an) Property

Setting : country setting, natural

Capacity : from 5 to 10 person(s)

Bedroom(s) : 5

Room(s) : 5

Bigues - Province of Barcelona - Catalonia

Spain

Advert No. 15953

[www.ihacom.co.uk](http://www.ihacom.co.uk)



>> HOLIDAY LETTINGS

BOOK DIRECT WITH THE OWNERS



## Gîte - Self Catering



Gîte - Self Catering - Typical House, detached, single storey, separate entrance, in a(an) Property

- **Ideal for family groups, all age groups**

- **View :** mountain, garden/park, farmland, forest, river, village
- **Setting :** country setting, natural
- **Exposure :** South-east

" 5 rooms and kitchen - dining room with everything you need to enter and spend a few days holiday (sheets, towels, kitchen utensils...). Garage, private garden of 700 square meters, large BBQ, Sun and shade areas generated by trees and porches, swings for children, etc... "

## Assets

- **Parking :**

Covered parking : 2 communal. Parking uncovered : 2 off road.

- **Advantages :**

4 pétanque set(s)

- **baby equipment :**

Baby chair



Summer

## Surroundings & location



### Countryside

" In the tourist area of Costa de Barcelona there are many interesting places to see. Include visits to Sant Miquel del Fai, Cim d' Àligues, Caldes de Montbui, Sant Sebastià de Montmajor, La Garriga, Castelletrol, etc... Great forests and mountains with stunning cliffs, and the Tenes River are remarkable elements of our environment. "

### Leisure

- **Leisure activities less than 20 km / 12 miles :**

Bathing, golf, pathway, coastal/forest paths, hiking, mini-golf, rollerblade/rollerskate (circuit), go-karting, racing circuit, hunting, fishing

- **Attractions and relaxation :**

Bar/pub, restaurant, open air summer cinema, park and garden, nature reserve, exhibition centre, art gallery, historical site, cellar and wine tasting

### Surroundings

- **Locality :**

Heated swimming pool 6mi.  
Public swimming pool 1.85mi.  
9 hole golf course 6mi.  
18 hole golf course 6mi.  
Flying clubs 25mi.  
River <165'  
Forest 660'  
Mountain range 1.25mi.

- **Amenities :**

Village centre 0.3mi.  
Bus stop / bus station 0.3mi.  
Breadshop 990'  
Caterer 660'  
Local shops 990'  
Supermarket 0.5mi.  
Hairdressing salon 660'  
Post office 0.3mi.  
Bank 990'  
Cash point 990'  
Chemist 990'  
Doctor 0.5mi.  
Nurse 0.5mi.  
Hospital 9mi.  
Dispensing clinic 0.5mi.



façade



Winter



garden

www.ihacom.co.uk

## Exterior

- **Ground surface :**  
7,500 Sq.ft.
- **Outside accommodation :**  
Terrace, covered terrace
- **Outside setting :**  
Private courtyard, garden, lawn, wooded park, river
- **Outside amenities :**  
BBQ, garden table(s), 6 garden seat(s), garden seated area, climbing frame



the property

www.ihacom.co.uk

## Interior

- **Receive up to :**  
from 5 to 10 person(s) (10 adults)
- **Liveable floor area :**  
1,940 Sq.ft.
- **Interior layout :**  
5 Room(s), 5 bedroom(s), 2 bathroom, 1 shower room, living room 215 Sq.ft., sitting room, american style kitchen, dining room, tv room, patio, veranda
- **Sleeps - bed(s) :**  
3 double bed(s), 2 single bed(s), 1 foldaway bed(s) 1 pers, 1 divan 1 pers, 1 baby cot(s)
- **Guest facilities :**  
T.V., hi-fi system, DVD player, board games, t.v points, wardrobe, cupboard, hair dryer, fly screens, central heating
- **Appliances :**  
Crockery/cutlery, kitchen utensils, cafetiere, electric coffee maker, gas cooker, oven, micro-wave oven, extractor hood, reffridgerator, dish washer, washing machine, vacuum cleaner, iron, ironing board

## Services

- **Washing :**  
Sheets (1 X / per week), Towels (1 X / per week), Blanket(s), Pillows (1 X / per week)
- **House :**  
Cleaning on departure, Garden/swimming pool maintenance (1 X / per week), Parking
- **Restauration :**  
Locally produced meals supplement

## For your guidance

- **For your guidance**  
Children welcome  
Pets accepted under certain conditions (ask the owner)  
Non smoking rental, mobile telephone network coverage, personal transport advisable  
Water : hot/cold  
Local voltage supply : 220-240V / 50Hz  
Electricity supply : mains
- **Handicapped people welcome**  
Wheelchair access  
Fitted out for the disabled : mobility



garden

www.ihacom.co.uk

Photo album - 1



Summer



Winter



façade



garden



garden

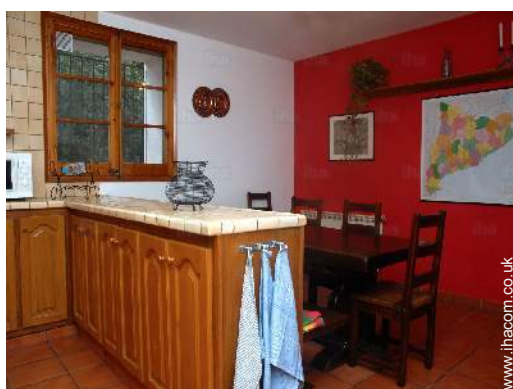
Photo album - 2



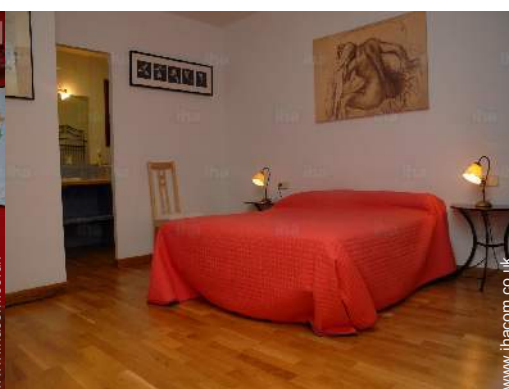
the property



Kitchen Area



dining room



bedroom



small bedroom



large bedroom



infants bedroom

Photo album - 3



bedroom

sitting room



sitting room

bathroom



bathroom

bathroom




shower room

### Location



### Location & Access

" From Barcelona, using C17 direction North and exit at L'Ametlla del Vallès. Go to Bigues i Riells - Sant Feliu de Codines, once in Bigues, follow direction Hotel MOLÍ de la Torre. We are just in front. "

 GPS coordinates in degrees, minutes, seconds: Latitude 41°40'38.1"N - Longitude 2°12'25.92"E (Dwelling)

#### Address

→ C/ Camí de la Torre, s/n  
08415 Bigues

#### • Motorway (junction) AP-7

→ Paret del Vallès, Province of Barcelona, Catalonia, Spain  
→ Distance : 11,2mi.  
→ Time : 15'

#### • Airport Barcelona El Prat

→ Barcelona, Province of Barcelona, Catalonia, Spain  
→ Distance : 37,3mi.  
→ Time : 50'

#### • Airport Girona Costa Brava

→ Girona, Province of Girona, Catalonia, Spain  
→ Distance : 56mi.  
→ Time : 1h15'

- Barcelona : (22,5mi.)
- Granollers : (11,2mi.)
- La Garriga : (7mi.)

### Contact

Spoken languages



Gîte - Self Catering  
Vallès Oriental - Spain  
"La Polvoreria"

[Book now](#)

Availability calendar - from : october 2017

Oct	Su	M	Tu	W	Th	F	Sa	Su	M	Tu	W	Th	F	Sa	Su	M	Tu	W	Th	F	Sa	Su	M	Tu							
2017	1	2	3	4	5	6	7	8	9	10	11	12	13	14	15	16	17	18	19	20	21	22	23	24	25	26	27	28	29	30	31
																			-	-	-	-	-	-	-	-	-	-	-	-	

Nov	W	Th	F	Sa	Su	M	Tu	W	Th	F	Sa	Su	M	Tu	W	Th	F	Sa	Su	M	Tu	W	Th							
2017	1	2	3	4	5	6	7	8	9	10	11	12	13	14	15	16	17	18	19	20	21	22	23	24	25	26	27	28	29	30
	-	-	-	-	-	-	-	-	-	-	-	-	-	-	-	-	-	-	-	-	-	-	-	-	-	-	-	-	-	-

Dec	F	Sa	Su	M	Tu	W	Th	F	Sa	Su	M	Tu	W	Th	F	Sa	Su	M	Tu	W	Th	F	Sa	Su							
2017	1	2	3	4	5	6	7	8	9	10	11	12	13	14	15	16	17	18	19	20	21	22	23	24	25	26	27	28	29	30	31
	-	-	-	-	-	-	-	-	-	-	-	-	-	-	-	-	-	-	-	-	-	-	-	-	-	-	-	-	-	-	

Jan	M	Tu	W	Th	F	Sa	Su	M	Tu	W	Th	F	Sa	Su	M	Tu	W	Th	F	Sa	Su	M	Tu	W							
2018	1	2	3	4	5	6	7	8	9	10	11	12	13	14	15	16	17	18	19	20	21	22	23	24	25	26	27	28	29	30	31
	-	-	-	-	-	-	-	-	-	-	-	-	-	-	-	-	-	-	-	-	-	-	-	-	-	-	-	-	-	-	

Feb	Th	F	Sa	Su	M	Tu	W	Th	F	Sa	Su	M	Tu	W	Th	F	Sa	Su	M	Tu	W							
2018	1	2	3	4	5	6	7	8	9	10	11	12	13	14	15	16	17	18	19	20	21	22	23	24	25	26	27	28
	-	-	-	-	-	-	-	-	-	-	-	-	-	-	-	-	-	-	-	-	-	-	-	-	-	-	-	-

Mar	Th	F	Sa	Su	M	Tu	W	Th	F	Sa	Su	M	Tu	W	Th	F	Sa	Su	M	Tu	W	Th	F	Sa							
2018	1	2	3	4	5	6	7	8	9	10	11	12	13	14	15	16	17	18	19	20	21	22	23	24	25	26	27	28	29	30	31
	-	-	-	-	-	-	-	-	-	-	-	-	-	-	-	-	-	-	-	-	-	-	-	-	-	-	-	-	-	-	

Apr	Su	M	Tu	W	Th	F	Sa	Su	M	Tu	W	Th	F	Sa	Su	M	Tu	W	Th	F	Sa	Su	M							
2018	1	2	3	4	5	6	7	8	9	10	11	12	13	14	15	16	17	18	19	20	21	22	23	24	25	26	27	28	29	30
	-	-	-	-	-	-	-	-	-	-	-	-	-	-	-	-	-	-	-	-	-	-	-	-	-	-	-	-	-	-

May	Tu	W	Th	F	Sa	Su	M	Tu	W	Th	F	Sa	Su	M	Tu	W	Th	F	Sa	Su	M	Tu	W	Th							
2018	1	2	3	4	5	6	7	8	9	10	11	12	13	14	15	16	17	18	19	20	21	22	23	24	25	26	27	28	29	30	31
	-	-	-	-	-	-	-	-	-	-	-	-	-	-	-	-	-	-	-	-	-	-	-	-	-	-	-	-	-	-	

June	F	Sa	Su	M	Tu	W	Th	F	Sa	Su	M	Tu	W	Th	F	Sa	Su	M	Tu	W	Th	F	Sa							
2018	1	2	3	4	5	6	7	8	9	10	11	12	13	14	15	16	17	18	19	20	21	22	23	24	25	26	27	28	29	30
	-	-	-	-	-	-	-	-	-	-	-	-	-	-	-	-	-	-	-	-	-	-	-	-	-	-	-	-	-	-

Jul	Su	M	Tu	W	Th	F	Sa	Su	M	Tu	W	Th	F	Sa	Su	M	Tu	W	Th	F	Sa	Su	M	Tu							
2018	1	2	3	4	5	6	7	8	9	10	11	12	13	14	15	16	17	18	19	20	21	22	23	24	25	26	27	28	29	30	31
	-	-	-	-	-	-	-	-	-	-	-	-	-	-	-	-	-	-	-	-	-	-	-	-	-	-	-	-	-	-	





Gîte - Self Catering  
Province of Barcelona - Catalonia  
"La Polvoreria"

9

[Book now](#)





Availability calendar - from : july 2018

Aug	W	Th	F	Sa	Su	M	Tu	W	Th	F	Sa	Su	M	Tu	W	Th	F	Sa	Su	M	Tu	W	Th	F							
2018	1	2	3	4	5	6	7	8	9	10	11	12	13	14	15	16	17	18	19	20	21	22	23	24	25	26	27	28	29	30	31

Sep	Sa	Su	M	Tu	W	Th	F	Sa	Su	M	Tu	W	Th	F	Sa	Su	M	Tu	W	Th	F	Sa	Su							
2018	1	2	3	4	5	6	7	8	9	10	11	12	13	14	15	16	17	18	19	20	21	22	23	24	25	26	27	28	29	30

[Month : Next >>](#)

Rental rates - Gîte - Self Catering - Typical House - from 5 to 10 Person(s)

Rates	Night	Weekend	week	2 weeks	Month
 Low season	£202* ↓ > 2	£448* (Friday)	£941*	£1702*	£2867*
 Mid season	£224* ↓ > 2	£493*	£1075*	£1837*	£3091*
 High season	£269* ↓ > 2	£538* (Friday)	£1165*	£1971*	£3315*
 Promotional period	£179* ↓ > 2	£403* (Friday)	£896*	£1613*	£2688*

↓ Reducing rates (Check-in day) > Minimum Night

[Book now](#)

Booking conditions

• Reservation

- Payment made upon reservation : 25% of rental sum
- Payment balance : on handing over the keys
- Deposit required : £134\*

• rentals

- Service charges included
- Day tax included
- Cleaning charge on departure included

[▶ Book now](#)

[▶ Contact the owner](#)

Accepted methods of payment

- Bank transfer (wire) • Cash

Contact directly the property owners

[www.ihacom.co.uk](http://www.ihacom.co.uk)

Advert No.

15953

[>> Book now <<](#)

Contact

Spoken languages



\* Converted at the rate indicated : €100 = \$117.29 = £89.59

Advert No. 15953

[www.ihacom.co.uk](http://www.ihacom.co.uk)



[>> HOLIDAY LETTINGS](#)

BOOK DIRECT WITH THE OWNERS