

# Gîte - Self Catering Bidart "Maison Arbolateia"



Gîte - Self Catering - Charming Shack, detached, single storey, separate entrance, in a(an) Charming Property

Setting : bucolic, characteristic

Capacity : from 2 to 4 person(s)

Bedroom(s) : 2

Room(s) : 3

Bidart - Pyrénées Atlantic (64) - Aquitaine

France

Reservation : +33 (0) 559549985 (France)

Advert No. 5703

www.ihacom.co.uk



>> HOLIDAY LETTINGS

BOOK DIRECT WITH THE OWNERS

## Gîte - Self Catering



Gîte - Self Catering - Charming Shack, detached, single storey, separate entrance, in a(an) Charming Property

- **Ideal for all age groups, family**
- **View :** not overlooked, swimming pool, garden/park
- **Setting :** bucolic, characteristic
- **Exposure :** South

## Assets

- **Swimming pool :**  
Private swimming-pool, rectangular (length 16', width 6.5'), illuminated, child secure (open from '01 january' till '01 january')
- **Parking :**  
Parking uncovered : 1 reserved bay.



Charming Shack

## Surroundings & location



Culture

### Leisure

- **Leisure activities less than 20 km / 12 miles :**

Bathing, pedalo, scuba diving, banana boat, jet ski, surfing, windsurfing, rafting, golf, tennis, squash, pony club, horse trekking, donkey rides, mini-golf, go-karting

- **Supervised :**

Tennis school, riding school

- **Attractions and relaxation :**

Bar/pub, discotheque, restaurant, cinema, park and garden, zoo/animal park, nature reserve, art gallery, historical site, museum, festivals, antiques & bric-a-brac, local craftshop, cellar and wine tasting, casino, racecourse, thermal baths, thalassotherapy centre, sauna, steam baths, health farm, beauticians, fitness centre, Bio farm

### Surroundings

- **Locality :**

Ice skating rink 4.5mi.  
Sea/ocean 0.93mi.  
Sandy beach 0.93mi.  
Shingle beach 1.5mi.  
9 hole golf course 0.62mi.  
18 hole golf course 1.85mi.  
Surfing spots 0.93mi.  
Cliff 1.25mi.  
Lake 1.85mi.  
Forest 3mi.

- **Amenities :**

Village centre 1.25mi.  
Bus stop / bus station 990'  
Bike/mountain bike hire 1.85mi.  
Scooter/motorbike hire 1.85mi.  
Car rental 1.85mi.  
Breadshop 990'  
Caterer 990'  
Local shops 990'  
Supermarket 990'  
High class retailers 3mi.  
Hairdressing salon 1.5mi.  
Chemist 990'  
Doctor 1.25mi.  
Hospital 3mi.



Interior layout



sitting room



master bedroom

### Exterior

- **Ground surface :**  
2,150 Sq.ft.
- **Outside accommodation :**  
Terrace 160 Sq.ft.
- **Outside setting :**  
Enclosed grounds 2,150 Sq.ft., landscaped garden, lawn
- **Outside amenities :**  
Summer living area, BBQ, garden table(s), garden seat(s), parasol, garden seated area, 2 chaise(s) longue(s)



child's room

### Interior

- **Receive up to :**  
from 2 to 4 person(s) (2 adults, 2 children)
- **Liveable floor area :**  
600 Sq.ft.
- **Interior layout :**  
3 Room(s), 2 bedroom(s), 1 bathroom, 1 WC, living room 160 Sq.ft., sitting room 110 Sq. ft., american style kitchen, dining room, cosy nook, dressing room, pantry
- **Sleeps - bed(s) :**  
1 double bed(s), 2 single bed(s)
- **Guest facilities :**  
T.V., t.v points, cupboard, Hanging wardrobe, hair dryer, electric heating, wood-burning stove, Glazed in area, Curtains, Double glazed, digipad entry system, fire alarm, remote controlled gates
- **Appliances :**  
Crockery/cutlery, kitchen utensils, cafetiere, electric coffee maker, electric kettle, toaster, juicer, electric cooker, electric hobs, oven, micro-wave oven, extractor hood, refridgerator, freezer, dish washer, vacuum cleaner

### Services

- **Washing :**  
Sheets, Towels, Linen, Quilt(s), Pillows
- **House :**  
Cleaning (1 X / per week), Cleaning on departure supplement (+£89\*), Garden/swimming pool maintenance, Parking
- **Personnel :**  
Baby sitting supplement, Beauty treatments supplement, Massage supplement

### For your guidance

- **For your guidance**  
Children welcome  
Pets accepted under certain conditions (ask the owner)  
Non smoking rental, mobile telephone network coverage  
Water : hot/cold  
Local voltage supply : 220-240V / 50Hz  
Electricity supply : mains



master bedroom

Photo album - 1



Charming Shack



sitting room



Interior layout

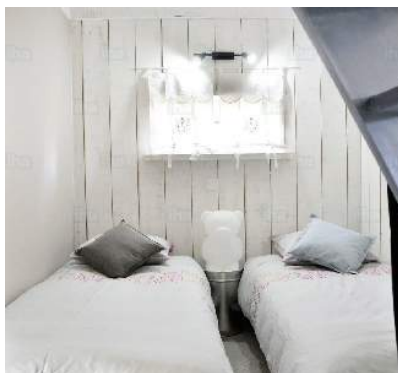


master bedroom



master bedroom

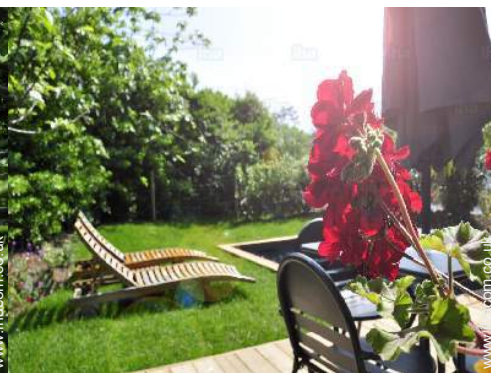
Photo album - 2



child's room



view from the bedroom



pool view



bathroom



Charming Shack



Charming Shack



Charming Shack

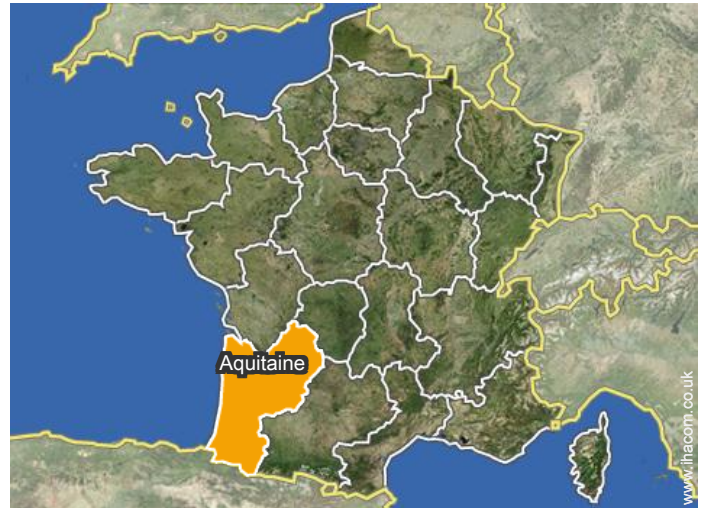


the house



the house

## Location



## Location & Access



GPS coordinates in degrees, minutes, seconds: Latitude 43°26'46"N - Longitude 1°34'23"W ([Dwelling](#))

### Address

→ 41 Chemin Manchulas  
64210 Bidart

### • Airport Biarritz/Anglet/Bayonne

→ Biarritz, Pyrénées Atlantic, Aquitaine, France  
→ Distance : 3mi.  
→ Time : 10'

### • Train station Biarritz

→ Biarritz, Pyrénées Atlantic, Aquitaine, France  
→ Distance : 1.85mi.  
→ Time : 10'

### • Motorway (junction) Biarritz Parme

→ Biarritz, Pyrénées Atlantic, Aquitaine, France  
→ Distance : 1.5mi.

→ Time : 5'

- Biarritz : (4.5mi.)
- Guéthary : (3mi.)
- Saint-Jean-de-Luz : (6mi.)

## Contact

Spoken languages



Gîte - Self Catering  
 Bidart - France  
**"Maison Arbolateia"**

[Book now](#)

Availability calendar - from : may 2019

May	W	Th	F	Sa	Su	M	Tu	W	Th	F	Sa	Su	M	Tu	W	Th	F	Sa	Su	M	Tu	W	Th	F	Sa	Su	M	Tu	W	Th	F
2019	1	2	3	4	5	6	7	8	9	10	11	12	13	14	15	16	17	18	19	20	21	22	23	24	25	26	27	28	29	30	31
																-	-	-	-	-	-	-	-	-	-	-	-	-	-	-	-

June	Sa	Su	M	Tu	W	Th	F	Sa	Su	M	Tu	W	Th	F	Sa	Su	M	Tu	W	Th	F	Sa	Su							
2019	1	2	3	4	5	6	7	8	9	10	11	12	13	14	15	16	17	18	19	20	21	22	23	24	25	26	27	28	29	30
	-	-	-	-	-	-	-	-	-	-	-	-	-	-	-	-	-	-	-	-	-	-	-	-	-	-	-	-	-	-

Jul	M	Tu	W	Th	F	Sa	Su	M	Tu	W	Th	F	Sa	Su	M	Tu	W	Th	F	Sa	Su	M	Tu	W	Th	F	Sa	Su	M	Tu	W
2019	1	2	3	4	5	6	7	8	9	10	11	12	13	14	15	16	17	18	19	20	21	22	23	24	25	26	27	28	29	30	31
	-	-	-	-	-	-	-	-	-	-	-	-	-	-	-	-	-	-	-	-	-	-	-	-	-	-	-	-	-	-	-

Aug	Th	F	Sa	Su	M	Tu	W	Th	F	Sa	Su	M	Tu	W	Th	F	Sa	Su	M	Tu	W	Th	F	Sa	Su	M	Tu	W	Th	F	Sa
2019	1	2	3	4	5	6	7	8	9	10	11	12	13	14	15	16	17	18	19	20	21	22	23	24	25	26	27	28	29	30	31
	-	-	-	-	-	-	-	-	-	-	-	-	-	-	-	-	-	-	-	-	-	-	-	-	-	-	-	-	-	-	-

Sep	Su	M	Tu	W	Th	F	Sa	Su	M	Tu	W	Th	F	Sa	Su	M	Tu	W	Th	F	Sa	Su	M							
2019	1	2	3	4	5	6	7	8	9	10	11	12	13	14	15	16	17	18	19	20	21	22	23	24	25	26	27	28	29	30
	-	-	-	-	-	-	-	-	-	-	-	-	-	-	-	-	-	-	-	-	-	-	-	-	-	-	-	-	-	-

Oct	Tu	W	Th	F	Sa	Su	M	Tu	W	Th	F	Sa	Su	M	Tu	W	Th	F	Sa	Su	M	Tu	W	Th	F	Sa	Su	M	Tu	W	Th
2019	1	2	3	4	5	6	7	8	9	10	11	12	13	14	15	16	17	18	19	20	21	22	23	24	25	26	27	28	29	30	31
	-	-	-	-	-	-	-	-	-	-	-	-	-	-	-	-	-	-	-	-	-	-	-	-	-	-	-	-	-	-	-

Nov	F	Sa	Su	M	Tu	W	Th	F	Sa	Su	M	Tu	W	Th	F	Sa	Su	M	Tu	W	Th	F	Sa							
2019	1	2	3	4	5	6	7	8	9	10	11	12	13	14	15	16	17	18	19	20	21	22	23	24	25	26	27	28	29	30
	-	-	-	-	-	-	-	-	-	-	-	-	-	-	-	-	-	-	-	-	-	-	-	-	-	-	-	-	-	-

Dec	Su	M	Tu	W	Th	F	Sa	Su	M	Tu	W	Th	F	Sa	Su	M	Tu	W	Th	F	Sa	Su	M	Tu							
2019	1	2	3	4	5	6	7	8	9	10	11	12	13	14	15	16	17	18	19	20	21	22	23	24	25	26	27	28	29	30	31
	-	-	-	-	-	-	-	-	-	-	-	-	-	-	-	-	-	-	-	-	-	-	-	-	-	-	-	-	-	-	

Jan	W	Th	F	Sa	Su	M	Tu	W	Th	F	Sa	Su	M	Tu	W	Th	F	Sa	Su	M	Tu	W	Th	F							
2020	1	2	3	4	5	6	7	8	9	10	11	12	13	14	15	16	17	18	19	20	21	22	23	24	25	26	27	28	29	30	31
	-	-	-	-	-	-	-	-	-	-	-	-	-	-	-	-	-	-	-	-	-	-	-	-	-	-	-	-	-	-	

Feb	Sa	Su	M	Tu	W	Th	F	Sa	Su	M	Tu	W	Th	F	Sa	Su	M	Tu	W	Th	F	Sa							
2020	1	2	3	4	5	6	7	8	9	10	11	12	13	14	15	16	17	18	19	20	21	22	23	24	25	26	27	28	29
	-	-	-	-	-	-	-	-	-	-	-	-	-	-	-	-	-	-	-	-	-	-	-	-	-	-	-	-	-



Gîte - Self Catering  
Pyrénées Atlantique - Aquitaine  
"Maison Arbolateia"

8

[Book now](#)

Availability calendar - from : february 2020

Mar	Su	M	Tu	W	Th	F	Sa	Su	M	Tu	W	Th	F	Sa	Su	M	Tu	W	Th	F	Sa	Su	M	Tu							
2020	1	2	3	4	5	6	7	8	9	10	11	12	13	14	15	16	17	18	19	20	21	22	23	24	25	26	27	28	29	30	31
-	-	-	-	-	-	-	-	-	-	-	-	-	-	-	-	-	-	-	-	-	-	-	-	-	-	-	-	-	-	-	

Apr	W	Th	F	Sa	Su	M	Tu	W	Th	F	Sa	Su	M	Tu	W	Th	F	Sa	Su	M	Tu	W	Th							
2020	1	2	3	4	5	6	7	8	9	10	11	12	13	14	15	16	17	18	19	20	21	22	23	24	25	26	27	28	29	30
-	-	-	-	-	-	-	-	-	-	-	-	-	-	-	-	-	-	-	-	-	-	-	-	-	-	-	-	-	-	

[Month : Next >>](#)

Rental rates - Gîte - Self Catering - Charming Shack - from 2 to 4 Person(s)

Rates	Night	Weekend	week	2 weeks	Month
<span style="color: blue;">■</span> Mid season	-	-	£890*	-	-
<span style="color: orange;">■</span> High season	-	-	£1602*	-	-

[Book now](#)

Booking conditions

• Reservation

→ Payment made upon reservation : 30% of rental sum  
→ Payment balance : on handing over the keys

• rentals

→ Service charges included  
→ Day tax included  
→ Cleaning charge levy on departure : £89\*

[▶ Book now](#)

[▶ Contact the owner](#)

Accepted methods of payment

• Bank transfer (wire) • Cheque • PayPal  
• Cash

Contact directly the property owners

[www.ihacom.co.uk](http://www.ihacom.co.uk)

Advert No.

5703

[>> Book now <<](#)

Contact

Spoken languages



\* Converted at the rate indicated : €100 = \$116.85 = £89

Advert No. 5703

[www.ihacom.co.uk](http://www.ihacom.co.uk)



[>> HOLIDAY LETTINGS](#)

[BOOK DIRECT WITH THE OWNERS](#)