

Gîte - Self Catering Bagimont "Rêve de Poètes"

You can enjoy the warmth of the open fire and all the comfort that offers our charming cottage. a space cosy where you can relax and enjoy the tranquility of the countryside. You can eat in the garden.



Qualité tourisme ()

Gîte - Self Catering - Charming Stone-Built House, semi-detached, 1 floor, separate entrance, in a(an) Hamlet

Setting : quiet, pleasant

Capacity : from 4 to 6 person(s)

Bedroom(s) : 3

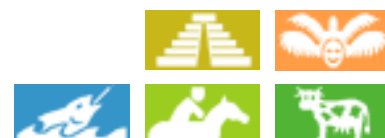
Bagimont - Province of Namur - Walloon

Belgium

Reservation : +32 (0) 61501511 (Belgium)

Advert No. 10164

www.ihacom.co.uk



>> HOLIDAY LETTINGS

BOOK DIRECT WITH THE OWNERS

Gîte - Self Catering



Gîte - Self Catering - Charming Stone-Built House, semi-detached, 1 floor, separate entrance, in a(an) Hamlet

- Ideal for family, all age groups
- View : country side, garden/park, forest, village
- Setting : quiet, pleasant
- Exposure : South

" Come enjoy a delightful setting in a bucolic village, you can relax and find the beauty of nature. You just leave the House to walk in the forest. You like the mountain bike is the perfect place... The village is only a play area for children, do not hesitate to take bikes, very few cars pass to Bagimont. We live in a wonderful area, please come and discover it or rediscover. "

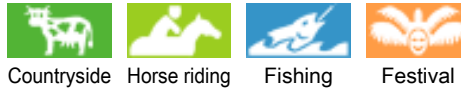
Assets

- Parking :
Covered parking Parking uncovered
- baby equipment :
Baby chair



cosy nook

Surroundings & location



Countryside Horse riding Fishing Festival



Culture

" A few kilometres from the beautiful city of Charleville Meziere and its magnificent Ducal place. 5 minutes from the Semois. Bouillon and its castle are 20 km away. Sedan also not far away from us the Abbey of Orval. You can practice kayak or pedalo on the Semois. "

Leisure

- Leisure activities less than 20 km / 12 miles :

Cross-country skiing, bathing, pedalo, canoeing, tennis, riding school, pony club, pathway, coastal/forest paths, hiking, climbing, mountain bike (path), horse-drawn carriage, horse trekking, mini-golf, rollerblade/rollerskate (circuit), go-karting, ten-pin bowling, hunting, big game hunting, acrobatics, fishing, angling, pétanque pitch

- Supervised :

Riding school

- Attractions and relaxation :

Bar/pub, discotheque, restaurant, cinema, park and garden, leisure park, zoo/animal park, art gallery, historical site, museum, theatre, festivals, antiques & bric-a-brac, local craftshop, beauticians, fitness centre, Bio farm

Surroundings

- Locality :

Public swimming pool 9mi.
Public tennis court 6mi.
River 1.85mi.
Forest <165'

- Amenities :

Village centre <165'
Bus stop / bus station <165'
Bike/mountain bike hire 6mi.
Household linens for hire/laundry services 4.5mi.
Breadshop 3mi.
Local shops 1.25mi.
Supermarket 3mi.
High class retailers 12.5mi.
Hairdressing salon 1.85mi.
Post office 3mi.
Bank 9mi.
Cash point 9mi.
Chemist 6mi.
Doctor 4.5mi.
Nurse 1.25mi.
Hospital 12.5mi.



Kitchen Area



living room



dining room

Interior

- **Receive up to :**

from 4 to 6 person(s)

- **Interior layout :**

3 bedroom(s), bathroom, WC, living room, sitting room, separate kitchen, dining room, cosy nook, tv room

- **Sleeps - bed(s) :**

2 double bed(s), 1 sofa bed(s) 2 pers, 3 single bed(s), 1 divan 1 pers

- **Guest facilities :**

Fireplace, T.V., hi-fi system, DVD player, board games, book collection, cable/satellite, internet access, wifi, cupboard, Hanging wardrobe, hair dryer, electric heating, Curtains, Blinds

- **Appliances :**

Crockery/cutlery, kitchen utensils, cafetiere, electric coffee maker, electric espresso coffee maker, electric kettle, toaster, electric raclette set, electric hobs, oven, micro-wave oven, extractor hood, refrigerator, freezer, dish washer, washing machine, vacuum cleaner, iron, ironing board

Exterior

- **Outside accommodation :**

Terrace

- **Outside setting :**

Garden

- **Outside amenities :**

BBQ, garden table(s), garden seat(s), parasol



tv room

Services

- **Washing :**

Sheets, Quilt(s), Pillows

- **House :**

Cleaning on departure supplement (+£45*), Parking, Airport transfers supplement

For your guidance

- **For your guidance**

Children welcome

Pets accepted under certain conditions (ask the owner)

Non smoking rental, mobile telephone network coverage, personal transport advisable

Water : hot/cold

Local voltage supply : 220-240V / 50Hz

Electricity supply : mains



tv room

Photo album - 1



cosy nook



living room



Kitchen Area



dining room



tv room

Photo album - 2



tv room



bedroom



bathroom



bathroom



bedroom



bedroom



the house



Hamlet



View



Summer

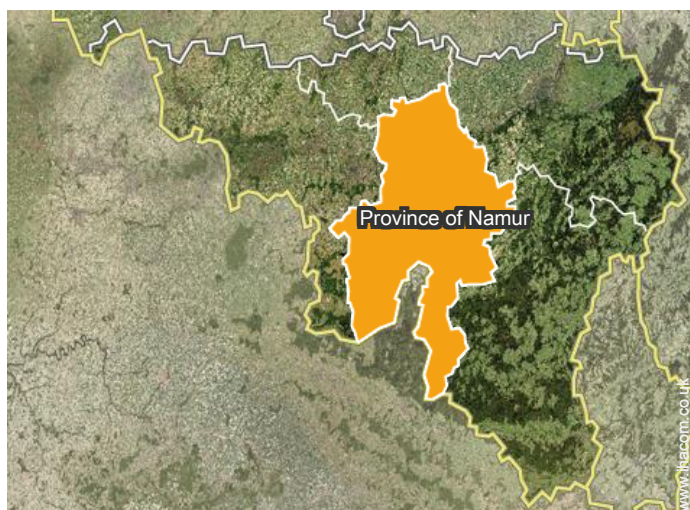


Summer



Summer

Location



Location & Access

" E411 exit Wellin follow Gedinne and Charleville. Direction Bagimont "



GPS coordinates in degrees, minutes, seconds: Latitude 49°49'29"N - Longitude 4°52'35"E (Dwelling)

Address

→ Rue du Calvaire, 3
5550 Bagimont

• Train station Gedinne

→ Gedinne, Province of Namur, Walloon,
Belgium
→ Time : 30'

• Train station Charleville Mézières

→ Charleville-Mézières, Ardennes,
Champagne-Ardenne, France
→ Time : 30'

• Motorway (junction) E411 no. 23

→ Wellin, Province of Luxembourg,
Walloon, Belgium
→ Distance : 25mi.

→ Time : 40'

- Bouillon : (12.5mi.)
- Charleville-Mézières : (12.5mi.)
- Sedan : (9mi.)

Contact

Spoken
languages



Gîte - Self Catering Bagimont - Belgium "Rêve de Poètes"

7

[Book now](#)

Availability calendar - from : december 2017

Dec	F	Sa	Su	M	Tu	W	Th	F	Sa	Su	M	Tu	W	Th	F	Sa	Su	M	Tu	W	Th	F	Sa	Su							
2017	1	2	3	4	5	6	7	8	9	10	11	12	13	14	15	16	17	18	19	20	21	22	23	24	25	26	27	28	29	30	31

Jan	M	Tu	W	Th	F	Sa	Su	M	Tu	W	Th	F	Sa	Su	M	Tu	W	Th	F	Sa	Su	M	Tu	W							
2018	1	2	3	4	5	6	7	8	9	10	11	12	13	14	15	16	17	18	19	20	21	22	23	24	25	26	27	28	29	30	31

Feb	Th	F	Sa	Su	M	Tu	W	Th	F	Sa	Su	M	Tu	W	Th	F	Sa	Su	M	Tu	W								
2018	1	2	3	4	5	6	7	8	9	10	11	12	13	14	15	16	17	18	19	20	21	22	23	24	25	26	27	28	

Mar	Th	F	Sa	Su	M	Tu	W	Th	F	Sa	Su	M	Tu	W	Th	F	Sa	Su	M	Tu	W	Th	F	Sa							
2018	1	2	3	4	5	6	7	8	9	10	11	12	13	14	15	16	17	18	19	20	21	22	23	24	25	26	27	28	29	30	31

Apr	Su	M	Tu	W	Th	F	Sa	Su	M	Tu	W	Th	F	Sa	Su	M	Tu	W	Th	F	Sa	Su	M							
2018	1	2	3	4	5	6	7	8	9	10	11	12	13	14	15	16	17	18	19	20	21	22	23	24	25	26	27	28	29	30

May	Tu	W	Th	F	Sa	Su	M	Tu	W	Th	F	Sa	Su	M	Tu	W	Th	F	Sa	Su	M	Tu	W	Th							
2018	1	2	3	4	5	6	7	8	9	10	11	12	13	14	15	16	17	18	19	20	21	22	23	24	25	26	27	28	29	30	31

June	F	Sa	Su	M	Tu	W	Th	F	Sa	Su	M	Tu	W	Th	F	Sa	Su	M	Tu	W	Th	F	Sa							
2018	1	2	3	4	5	6	7	8	9	10	11	12	13	14	15	16	17	18	19	20	21	22	23	24	25	26	27	28	29	30

Jul	Su	M	Tu	W	Th	F	Sa	Su	M	Tu	W	Th	F	Sa	Su	M	Tu	W	Th	F	Sa	Su	M	Tu							
2018	1	2	3	4	5	6	7	8	9	10	11	12	13	14	15	16	17	18	19	20	21	22	23	24	25	26	27	28	29	30	31

Aug	W	Th	F	Sa	Su	M	Tu	W	Th	F	Sa	Su	M	Tu	W	Th	F	Sa	Su	M	Tu	W	Th	F							
2018	1	2	3	4	5	6	7	8	9	10	11	12	13	14	15	16	17	18	19	20	21	22	23	24	25	26	27	28	29	30	31

Sep	Sa	Su	M	Tu	W	Th	F	Sa	Su	M	Tu	W	Th	F	Sa	Su	M	Tu	W	Th	F	Sa	Su							
2018	1	2	3	4	5	6	7	8	9	10	11	12	13	14	15	16	17	18	19	20	21	22	23	24	25	26	27	28	29	30

■ Low season
 ■ Reserved
 ■ Festive specials



Gîte - Self Catering
Province of Namur - Walloon
"Rêve de Poètes"

8

[Book now](#)

Availability calendar - from : september 2018

Oct	M	Tu	W	Th	F	Sa	Su	M	Tu	W	Th	F	Sa	Su	M	Tu	W	Th	F	Sa	Su	M	Tu	W							
2018	1	2	3	4	5	6	7	8	9	10	11	12	13	14	15	16	17	18	19	20	21	22	23	24	25	26	27	28	29	30	31
	-	-	-	-	-	-	-	-	-	-	-	-	-	-	-	-	-	-	-	-	-	-	-	-	-	-	-	-	-	-	

Nov	Th	F	Sa	Su	M	Tu	W	Th	F	Sa	Su	M	Tu	W	Th	F	Sa	Su	M	Tu	W	Th	F							
2018	1	2	3	4	5	6	7	8	9	10	11	12	13	14	15	16	17	18	19	20	21	22	23	24	25	26	27	28	29	30
	-	-	-	-	-	-	-	-	-	-	-	-	-	-	-	-	-	-	-	-	-	-	-	-	-	-	-	-	-	

■ Low season ■ Reserved ■ Festive specials

[Month : Next >>](#)

Rental rates - Gîte - Self Catering - Charming Stone-Built House - from 4 to 6 Person(s)

Rates	Night	Weekend	week	2 weeks	Month
■ Low season	-	£188* (Friday)	£269* (Friday)	£493* (Friday)	£896*
■ Mid season	-	£188* (Friday)	£314* (Friday)	£538* (Friday)	£896*
■ High season	-	-	£358* (Friday)	£627* (Friday)	£1165*
■ Festive specials	-	£314*	£403* (Friday)	£717*	£1433*

(Check-in day)

[Book now](#)

Booking conditions

• Reservation

- Payment made upon reservation : 25% of rental sum
- Payment balance : 1 month before the stay
- Deposit required : £179*

• rentals

- Service charges to be added
- Day tax included
- Cleaning charge levy on departure : £45*
- Anticipated supplement for : - firewood

Accepted methods of payment

- Bank transfer (wire) • Cash

[▶ Book now](#)

[▶ Contact the owner](#)

Contact directly the property owners

www.ihacom.co.uk

Advert No.

10164

[>> Book now <<](#)

Contact

Spoken languages



* Converted at the rate indicated : €100 = \$117.29 = £89.59

Advert No. 10164

www.ihacom.co.uk



[>> HOLIDAY LETTINGS](#)

BOOK DIRECT WITH THE OWNERS