

Charming holiday letting Saint-Leu "Les Kréol' Inns"

Beautiful creole houses of tropical-style, 2 to 6 people, hidden in a garden planted with trees. Overlooking the Bay of Saint-Leu.



Enfants
Bienvenue...

www.ihacom.co.uk



Charming Bungalow, detached, single storey, separate entrance, in a(an) Charming Property

Setting : heavenly, tropical

Capacity : **from 2 to 6 person(s)**

Bedroom(s) : **2**

Room(s) : **4**

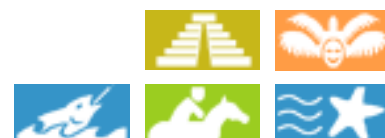
Saint-Leu

Reunion Island

Advert No. 42259

Reservation : +33 (0) 92658426 (France)

www.ihacom.co.uk



>> HOLIDAY LETTINGS

BOOK DIRECT WITH THE OWNERS

Charming holiday letting



Charming Bungalow, detached, single storey, separate entrance, in a(an) Charming Property

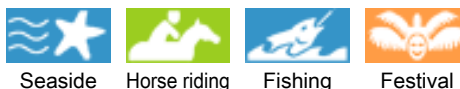
- **Ideal for all age groups**
- **View :** panoramic, dominant, sea/ocean, swimming pool, village, fantastic sunset
- **Setting :** heavenly, tropical
- **Exposure :** South-west

" Beautiful creole style houses 2 to 6 people. Recommended by guidebooks: hidden in a wooded tropical garden. Overlooking the Bay of Saint-Leu (in winter period we can spot whales). To sit quietly in a sun lounge by the pool and dream. The happiness of the children with the games area (swings, trampoline, slide, toys books). Close to the resorts of Saint Leu and St Gilles. Our residence is wooded and well flowered: banana, papaya, pomegranate, Ylang-ylang, hibiscus, orchids, anthuriums, flavours, etc. We are happy to share our fruits with our clients depending on the season. "

Assets

- **Swimming pool :**
Shared swimming pool, oval, sea water, heated, illuminated, steps in, child secure, outside shower (open from '01 january' till '01 january')
- **Parking :**
Parking uncovered : internal.
- **Advantages :**
Snorkelling equipment
- **baby equipment :**
Baby chair, baby bath, baby potty, pushchair

Surroundings & location



Culture

" Grocery store next to the farm (bread and pastry in the morning). 4 km from St Leu town and beaches, many leisures nearby: paragliding, scuba diving, surfing, Museum, farm of turtles, restaurants, parks. Our leisure partners grant you discounts: diving, washing centres, fishing, hiking, activities at sea and rivers, paragliding, mountain biking, St Leu shops, beautician shops. "

Leisure

- **Leisure activities less than 20 km / 12 miles :**

Bathing, pedalo, snorkelling, scuba diving, banana boat, jet ski, surfing, windsurfing, sailing, kite surfing, canoeing, canyoning, rafting, golf, tennis, squash, riding school, pony club, hiking, climbing, mountain bike (path), parascending, paragliding, Microlights, horse trekking, go-karting, fishing, deep-sea angling, spear fishing, pétanque pitch

- **Supervised :**

Sailing school, dive school, tennis school, riding school

- **Attractions and relaxation :**

Bar/pub, discotheque, restaurant, cinema, park and garden, leisure park, zoo/animal park, nature reserve, exhibition centre, historical site, museum, festivals, antiques & bric-a-brac, local craftshop, cellar and wine tasting, casino, sauna, steam baths, health farm, beauticians, fitness centre

Surroundings

- **Locality :**
Heated swimming pool
Sea/ocean
Sandy beach
Forest
Mountain range
- **Amenities :**
Bus stop / bus station
Car rental
Boat rental
Scuba diving material hire
Breadshop
Caterer
Local shops
Supermarket
Hairdressing salon
Post office
Bank
Cash point
Chemist
Doctor

Nurse



Enfants
Bienvenue...



Interior

- **Receive up to :**
from 2 to 6 person(s)
- **Liveable floor area :**
4,300 Sq.ft.
- **Interior layout :**
4 Room(s), 2 bedroom(s), 1 bathroom, 1 shower room, 1 WC, living room 100 Sq.ft., sitting room 100 Sq.ft., Kitchen Area, dining area, reading room, games room, dressing room, laundry room
- **Sleeps - bed(s) :**
2 double bed(s), 1 sofa bed(s) 2 pers, 1 folding bed(s) 1 pers, 1 baby cot(s)
- **Guest facilities :**
T.V., board games, book collection, t.v points, fax, internet access, wifi, wardrobe, cupboard, Hanging wardrobe, hair dryer, mobile cool air fan, Glazed in area, Curtains, Blinds
- **Appliances :**
Crockery/cuttlery, kitchen utensils, cafetiere, electric coffee maker, electric kettle, toaster, meat grill, gas cooker, electric hobs, micro-wave oven, extractor hood, refridgerator, freezer, washing machine, clothes dryer, vacuum cleaner, iron, ironing board

Exterior

- **Ground surface :**
0.37 acre
- **Outside accommodation :**
Terrace 75 Sq.ft., covered terrace 75 Sq.ft., roof terrace 75 Sq.ft., garden shed
- **Outside setting :**
Garden, landscaped garden, tropical garden, lawn, wooded park
- **Outside amenities :**
Summer living area, BBQ, garden table(s), garden seat(s), parasol, garden seated area, 9 chaise(s) longue(s), sun recliner(s), hammock(s), rocking chair(s), child's swing, climbing frame, outside shower facilities



Services

- **Washing :**
Sheets, Towels, Linen, Blanket(s), Quilt(s), Pillows
- **House :**
Cleaning, Cleaning on departure supplement (+£40*), Garden/swimming pool maintenance, Caretaker/concierge, Parking

For your guidance

- **For your guidance**
Children welcome
No pet allowed
Personal transport advisable
Water : hot/cold
Local voltage supply : 110-120V / 60Hz
Electricity supply : shared generator
- **Handicapped people welcome**
Wheelchair access
Fitted out for the disabled : visually impaired, hard of hearing, mentally



Photo album - 1



Enfants
Bienvenue...

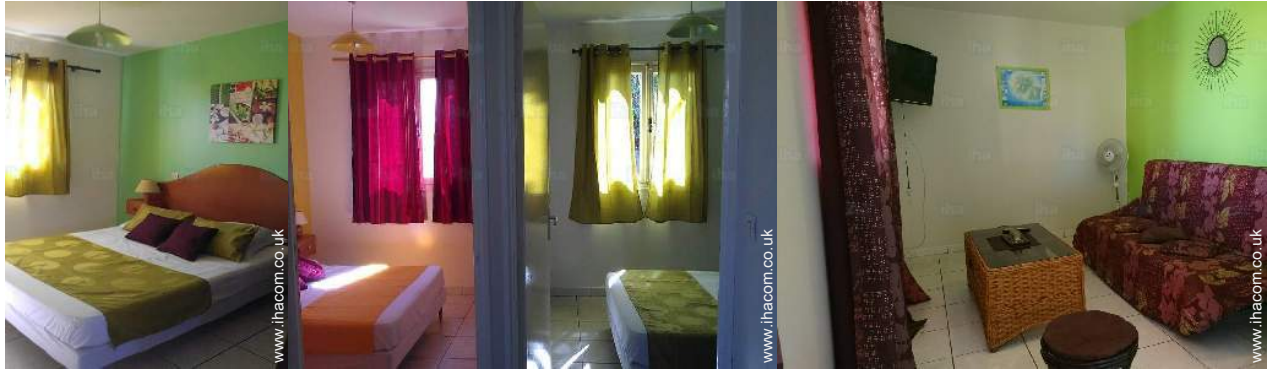


Charming holiday letting
Saint-Leu - Reunion Island
"Les Kréol' Inns"

5

[Book now](#)

Photo album - 2



Advert No. 42259

www.ihacom.co.uk



[>> HOLIDAY LETTINGS](#)

[BOOK DIRECT WITH THE OWNERS](#)

Charming holiday letting
Saint-Leu - Reunion Island
"Les Kréol' Inns"

6

[Book now](#)

Photo album - 3



Advert No. 42259

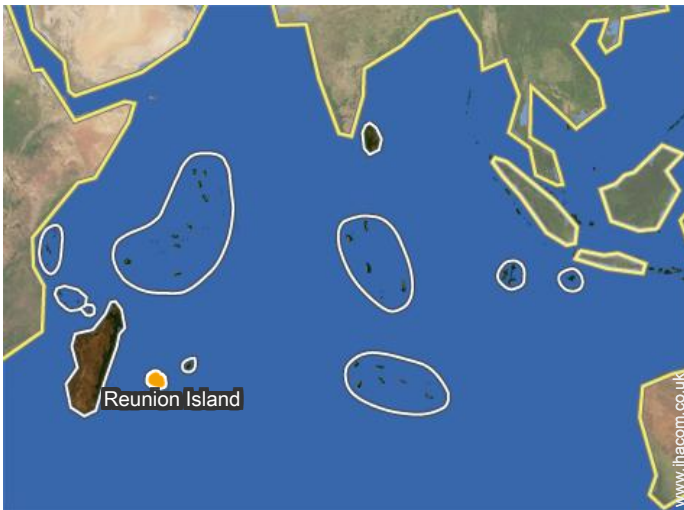
www.ihacom.co.uk



>> HOLIDAY LETTINGS

BOOK DIRECT WITH THE OWNERS

Location



Location & Access

" 550 chemin de la surprise, La Fontaine 97436 SAINT LEU.
DIRECTIONS: The KREOL' INNS: from Airport: DIRECTION St Denis - direction ST PAUL, on the Tamarins motorway take exit ST Leu Colimaçon, go down at St Leu city and at the entrance to the city the 1st left towards La Fontaine. "



GPS coordinates in degrees, minutes, seconds: Latitude 21° 9'24"S - Longitude 55°17'60"E ([Dwelling](#))

Address

→ 550 chemin de La Surprise
La Fontaine
97436 Saint-Leu

• Airport Saint Pierre Pierrefonds

→ Saint-Pierre, Reunion Island
→ Distance : 23,6mi.

- Saint-Leu : (0.93mi.)
- La Saline-les-Bains : (10mi.)
- L'Étang-Salé-les-Bains : (10,5mi.)

Contact

Spoken languages



Charming holiday letting Saint-Leu - Reunion Island "Les Kréol' Inns"

[Book now](#)

Availability calendar - from : november 2018

Nov	Th	F	Sa	Su	M	Tu	W	Th	F	Sa	Su	M	Tu	W	Th	F	Sa	Su	M	Tu	W	Th	F	Sa	Su	M	Tu	W	Th	F	
2018	1	2	3	4	5	6	7	8	9	10	11	12	13	14	15	16	17	18	19	20	21	22	23	24	25	26	27	28	29	30	
																					-	-	-	-	-	-	-	-	-	-	

Dec	Sa	Su	M	Tu	W	Th	F	Sa	Su	M	Tu	W	Th	F	Sa	Su	M	Tu	W	Th	F	Sa	Su	M	Tu	W	Th	F	Sa	Su	M
2018	1	2	3	4	5	6	7	8	9	10	11	12	13	14	15	16	17	18	19	20	21	22	23	24	25	26	27	28	29	30	31

Jan	Tu	W	Th	F	Sa	Su	M	Tu	W	Th	F	Sa	Su	M	Tu	W	Th	F	Sa	Su	M	Tu	W	Th	F	Sa	Su	M	Tu	W	Th
2019	1	2	3	4	5	6	7	8	9	10	11	12	13	14	15	16	17	18	19	20	21	22	23	24	25	26	27	28	29	30	31

Feb	F	Sa	Su	M	Tu	W	Th	F	Sa	Su	M	Tu	W	Th	F	Sa	Su	M	Tu	W	Th	F	Sa	Su	M	Tu	W	Th	
2019	1	2	3	4	5	6	7	8	9	10	11	12	13	14	15	16	17	18	19	20	21	22	23	24	25	26	27	28	

Mar	F	Sa	Su	M	Tu	W	Th	F	Sa	Su	M	Tu	W	Th	F	Sa	Su	M	Tu	W	Th	F	Sa	Su	M	Tu	W	Th	F	Sa	Su
2019	1	2	3	4	5	6	7	8	9	10	11	12	13	14	15	16	17	18	19	20	21	22	23	24	25	26	27	28	29	30	31

Apr	M	Tu	W	Th	F	Sa	Su	M	Tu	W	Th	F	Sa	Su	M	Tu	W	Th	F	Sa	Su	M	Tu	W	Th	F	Sa	Su	M	Tu
2019	1	2	3	4	5	6	7	8	9	10	11	12	13	14	15	16	17	18	19	20	21	22	23	24	25	26	27	28	29	30

May	W	Th	F	Sa	Su	M	Tu	W	Th	F	Sa	Su	M	Tu	W	Th	F	Sa	Su	M	Tu	W	Th	F	Sa	Su	M	Tu	W	Th	F
2019	1	2	3	4	5	6	7	8	9	10	11	12	13	14	15	16	17	18	19	20	21	22	23	24	25	26	27	28	29	30	31

June	Sa	Su	M	Tu	W	Th	F	Sa	Su	M	Tu	W	Th	F	Sa	Su	M	Tu	W	Th	F	Sa	Su	M	Tu	W	Th	F	Sa	Su
2019	1	2	3	4	5	6	7	8	9	10	11	12	13	14	15	16	17	18	19	20	21	22	23	24	25	26	27	28	29	30

Jul	M	Tu	W	Th	F	Sa	Su	M	Tu	W	Th	F	Sa	Su	M	Tu	W	Th	F	Sa	Su	M	Tu	W	Th	F	Sa	Su	M	Tu	W
2019	1	2	3	4	5	6	7	8	9	10	11	12	13	14	15	16	17	18	19	20	21	22	23	24	25	26	27	28	29	30	31

Aug	Th	F	Sa	Su	M	Tu	W	Th	F	Sa	Su	M	Tu	W	Th	F	Sa	Su	M	Tu	W	Th	F	Sa	Su	M	Tu	W	Th	F	Sa
2019	1	2	3	4	5	6	7	8	9	10	11	12	13	14	15	16	17	18	19	20	21	22	23	24	25	26	27	28	29	30	31

Reserved



Charming holiday letting
Saint-Leu - Reunion Island
"Les Kréol' Inns"

9

[Book now](#)

Availability calendar - from : august 2019



Sep	Su	M	Tu	W	Th	F	Sa	Su	M	Tu	W	Th	F	Sa	Su	M	Tu	W	Th	F	Sa	Su	M							
2019	1	2	3	4	5	6	7	8	9	10	11	12	13	14	15	16	17	18	19	20	21	22	23	24	25	26	27	28	29	30
-	-	-	-	-	-	-	-	-	-	-	-	-	-	-	-	-	-	-	-	-	-	-	-	-	-	-	-	-	-	

Oct	Tu	W	Th	F	Sa	Su	M	Tu	W	Th	F	Sa	Su	M	Tu	W	Th	F	Sa	Su	M	Tu	W	Th							
2019	1	2	3	4	5	6	7	8	9	10	11	12	13	14	15	16	17	18	19	20	21	22	23	24	25	26	27	28	29	30	31
-	-	-	-	-	-	-	-	-	-	-	-	-	-	-	-	-	-	-	-	-	-	-	-	-	-	-	-	-	-		

Reserved

[Month : Next >>](#)

Rental rates - Charming Bungalow - from 2 to 6 Person(s)

Rates	Night	Weekend	week	2 weeks	Month
 Low season	-	£129* (Friday)	£490*	£954*	-
 High season	-	£147* (Friday)	£538*	£1049*	£1664*

(Check-in day)

[Book now](#)

Booking conditions

• Reservation

- Payment made upon reservation : 30% of rental sum
- Payment balance : on handing over the keys
- Deposit required : £445*

• rentals

- Service charges included
- Day tax included

[▶ Book now](#)

[▶ Contact the owner](#)

Accepted methods of payment

- Bank transfer (wire)
- Cheque
- Bankers draft
- Cash

Contact directly the property owners

www.ihacom.co.uk

Advert No.

42259

[>> Book now <<](#)

Contact

Spoken languages



* Converted at the rate indicated : €100 = \$116.85 = £89

Advert No. 42259

www.ihacom.co.uk



[>> HOLIDAY LETTINGS](#)

BOOK DIRECT WITH THE OWNERS