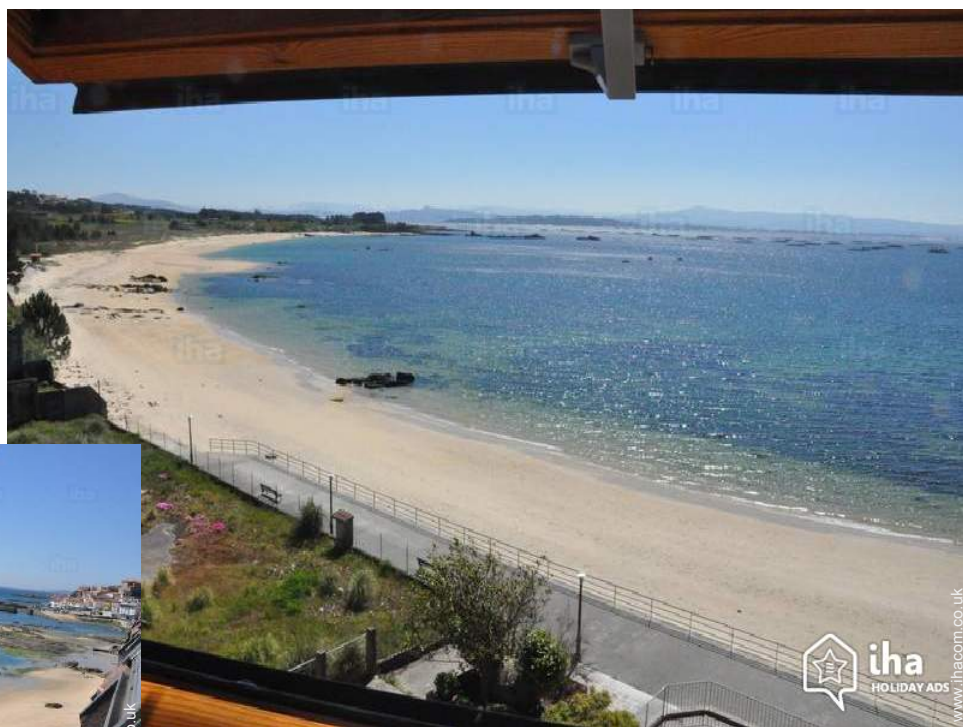


# Charming holiday letting Barbanza "Palmeira"

Relax in penthouse views. Come with your partner or friends. Enjoy an incredible natural environment with an excellent cuisine. Prices reduced to couples except high season



**Charming Penthouse** top floor, shared entrance, in a(an) Apartment block 3 floors

Setting : seaside, waterfront

Capacity : **from 1 to 8 person(s)**

Bedroom(s) : 4

Room(s) : 4

Palmeira - Province of A Coruña - Galicia

Spain

Advert No. 52878

[www.ihacom.co.uk](http://www.ihacom.co.uk)



>> HOLIDAY LETTINGS

BOOK DIRECT WITH THE OWNERS

## Charming holiday letting



Charming Penthouse top floor, shared entrance, in a(an) Apartment block 3 floors

- **Ideal for all age groups, family**
- **View :** panoramic, sea/ocean, garden/park, harbour, village, fantastic sunset
- **Setting :** seaside, waterfront
- **Exposure :** South-east

" Apartment 4 bedrooms and 2 bathrooms in first-line of beach. Incredible views of the Ria de Arousa in urbanization with private garden and BBQ. Intended for the relaxation and enjoyment of all members of the family at all times of the year. The equipment includes cradle of travel, baby bathtub, bed and toys, barrier that will make more pleasant the stay of children. In summer you can have beach towels, umbrella, beach chairs, buckets, shovels, etc.; and in winter season of central heating with programmable thermostat, duvets duplo and courtesy on the sofa throws Chair in the room. We have also paid attention to technology and the apartment has two smart tv 4 k 50-inch and the internet by optical fiber. You can wake up seeing sunrise from the bed and enjoy both an unforgettable Beach in summer, for the pleasure of seeing the River a day of winter storm. Master bedroom with bathroom, 22 m2, overlooking the estuary, 1 bed, 90 x 2, 00 m., mattress viscoelastic and chaise-longue. Second bedroom 14.5 m2, overlooking the estuary, bed of 1.50 m and desk. Third bedroom 13 m2, bed of 1.35 m. Fourth 8,87 m2 bedroom, 2 twin beds in 1,05 m. kitchen: ceramic hob, oven pyrolytic, dishwasher, washing machine, microwave, refrigerator combi inox, Blender, Toaster, coffee maker, kettle. Parking place. "

## Assets

- **Parking :**  
Covered parking : 1 closed individual place (s).
- **baby equipment :**  
Baby chair, baby bath, playpen

Benefits :  
Direct access to the beach

## Surroundings & location



Seaside



Fishing



Culture

" Incredible natural surroundings. Corrubedo natural park is 7 km away, more fixed in Galicia dune and lagoon where you can observe migratory birds. All sports related to sea and nature are present in the area, highlights hiking and all sea sports (swimming, diving, sailing...). You can also access a field of golf and horse riding to less than 20 minutes by car. "

### Leisure

- **Leisure activities less than 20 km / 12 miles :**

Bathing, pedalo, snorkelling, scuba diving, surfing, windsurfing, tennis, pathway, coastal/forest paths, hiking, boat trips, basketball, paintball, fishing, angling, spear fishing

- **Supervised :**

Sailing school, tennis school

- **Attractions and relaxation :**

Bar/pub, restaurant, cinema, park and garden, nature reserve, exhibition centre, festivals, natural spring baths, health farm, fitness centre

### Surroundings

- **Locality :**

Heated swimming pool 1.85mi.  
Sea/ocean <165'  
Sandy beach <165'  
Nudist beach 2.5mi.  
Creek 330'  
Public swimming pool 1.85mi.  
Public tennis court 1.5mi.  
Cliff 3mi.  
River 1.85mi.  
Lake 4.5mi.  
Forest 0.62mi.  
Marina 1.85mi.

- **Amenities :**

Village centre 165'  
Bus stop / bus station <165'  
Breadshop <165'  
Local shops <165'  
Supermarket <165'  
Hairdressing salon <165'  
Bank 660'  
Cash point 660'  
Chemist 165'  
Hospital 4.5mi.  
Dispensing clinic 1.25mi.



view of the port



view from the bedroom

Charming holiday letting  
Palmeira - Spain  
"Palmeira"

3

[Book now](#)



sitting room

### Interior

- **Receive up to :**  
from 1 to 8 person(s) (8 adults)
- **Liveable floor area :**  
1,300 Sq.ft.
- **Interior layout :**  
4 Room(s), 4 bedroom(s), 2 bathroom, sitting room 215 Sq.ft., separate kitchen, dining room
- **Sleeps - bed(s) :**  
2 double bed(s), 1 king-size bed(s), 2 twin beds (standard)
- **Guest facilities :**  
Lift, T.V., DVD player, board games, book collection, film collection, t.v points, high speed internet access, wifi, cupboard, hair dryer, central heating, Glazed in area, Blinds, Double glazed, entry phone system
- **Appliances :**  
Crockery/cutlery, kitchen utensils, electric coffee maker, electric espresso coffee maker, electric kettle, toaster, juicer, electric hobs, oven, micro-wave oven, electric chip fryer, extractor hood, refridgerator, freezer, dish washer, washing machine, vacuum cleaner, iron, ironing board

### Exterior

- **Ground surface :**  
< 1,076 Sq.ft.
- **Outside setting :**  
Garden, wooded park, pinewood 5,400 Sq. ft., river
- **Outside amenities :**  
BBQ



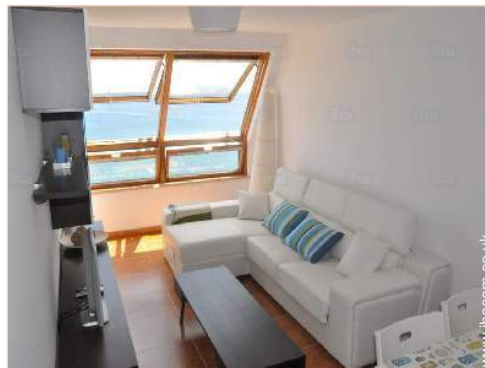
sitting room

### Services

- **Washing :**  
Sheets (1 X / per week), Towels (1 X / per week), Beach towels (1 X / per week), Quilt (s), Pillows
- **House :**  
Cleaning on departure, Parking

### For your guidance

- **For your guidance**  
Children welcome  
Pets accepted under certain conditions (ask the owner)  
Mobile telephone network coverage  
Water : hot/cold  
Local voltage supply : 220-240V / 50Hz  
Electricity supply : mains



sitting room

Advert No. 52878

[www.ihacom.co.uk](http://www.ihacom.co.uk)



>> HOLIDAY LETTINGS

BOOK DIRECT WITH THE OWNERS

Photo album - 1



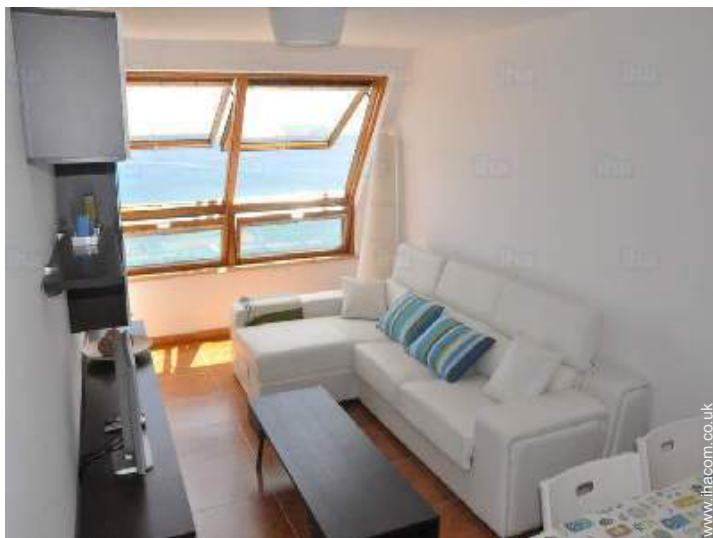
view from the bedroom



view of the port



sitting room



sitting room



sitting room

Photo album - 2



master bedroom



king-size bed(s)



master bedroom



large bedroom



double bed(s)



bedroom



double bed(s)



twin beds (standard)



twin beds (standard)



separate kitchen

Photo album - 3



bathroom

bathroom



garden



BBQ



Attractions and relaxation



Attractions and relaxation



Attractions and relaxation



Attractions and relaxation



Attractions and relaxation




view of the sunset

### Location



### Location & Access

" Located in Palmeira, a small and quiet village fishing, very well connected by motorway with the main Galician cities. Allows you to move to Santiago de Compostela in 40', to Pontevedra in 40', 1 h and a Coruña Vigo 1h15'. So you can combine rest, the natural environment and the excellent local cuisine tourism. "

 GPS coordinates in degrees, minutes, seconds: Latitude 42°35'2"N - Longitude 8° 57'26"W ([Dwelling](#))

#### Address

→ Urbanizacion Palmeira  
15950 Palmeira

#### • Motorway (junction) Pobra Norte

→ A Pobra do Caramiñal, Province of A Coruña, Galicia, Spain  
→ Distance : 2.5mi.  
→ Time : 5'

#### • Motorway (junction) Salida Palmeira

→ Santa Uxía de Ribeira, Province of A Coruña, Galicia, Spain  
→ Distance : 2.5mi.  
→ Time : 5'

- Saint James of Compostela : (34,8mi.)
- Santa Uxía de Ribeira : (2.5mi.)
- Pontevedra : (40mi.)

### Contact

Spoken languages



# Charming holiday letting Barbanza - Spain "Palmeira"

[Book now](#)

## Availability calendar - from : june 2019

June	Sa	Su	M	Tu	W	Th	F	Sa	Su	M	Tu	W	Th	F	Sa	Su	M	Tu	W	Th	F	Sa	Su							
2019	1	2	3	4	5	6	7	8	9	10	11	12	13	14	15	16	17	18	19	20	21	22	23	24	25	26	27	28	29	30
															-	-	-	-	-	-	-	-	-	-	-	-	-	-	-	

Jul	M	Tu	W	Th	F	Sa	Su	M	Tu	W	Th	F	Sa	Su	M	Tu	W	Th	F	Sa	Su	M	Tu	W							
2019	1	2	3	4	5	6	7	8	9	10	11	12	13	14	15	16	17	18	19	20	21	22	23	24	25	26	27	28	29	30	31
	-	-	-	-	-	-	-	-	-	-	-	-	-	-	-	-	-	-	-	-	-	-	-	-	-	-	-	-	-	-	

Aug	Th	F	Sa	Su	M	Tu	W	Th	F	Sa	Su	M	Tu	W	Th	F	Sa	Su	M	Tu	W	Th	F	Sa							
2019	1	2	3	4	5	6	7	8	9	10	11	12	13	14	15	16	17	18	19	20	21	22	23	24	25	26	27	28	29	30	31
	-	-	-	-	-	-	-	-	-	-	-	-	-	-	-	-	-	-	-	-	-	-	-	-	-	-	-	-	-	-	

Sep	Su	M	Tu	W	Th	F	Sa	Su	M	Tu	W	Th	F	Sa	Su	M	Tu	W	Th	F	Sa	Su	M							
2019	1	2	3	4	5	6	7	8	9	10	11	12	13	14	15	16	17	18	19	20	21	22	23	24	25	26	27	28	29	30
	-	-	-	-	-	-	-	-	-	-	-	-	-	-	-	-	-	-	-	-	-	-	-	-	-	-	-	-	-	

Oct	Tu	W	Th	F	Sa	Su	M	Tu	W	Th	F	Sa	Su	M	Tu	W	Th	F	Sa	Su	M	Tu	W	Th							
2019	1	2	3	4	5	6	7	8	9	10	11	12	13	14	15	16	17	18	19	20	21	22	23	24	25	26	27	28	29	30	31
	-	-	-	-	-	-	-	-	-	-	-	-	-	-	-	-	-	-	-	-	-	-	-	-	-	-	-	-	-	-	

Nov	F	Sa	Su	M	Tu	W	Th	F	Sa	Su	M	Tu	W	Th	F	Sa	Su	M	Tu	W	Th	F	Sa							
2019	1	2	3	4	5	6	7	8	9	10	11	12	13	14	15	16	17	18	19	20	21	22	23	24	25	26	27	28	29	30
	-	-	-	-	-	-	-	-	-	-	-	-	-	-	-	-	-	-	-	-	-	-	-	-	-	-	-	-	-	-

Dec	Su	M	Tu	W	Th	F	Sa	Su	M	Tu	W	Th	F	Sa	Su	M	Tu	W	Th	F	Sa	Su	M	Tu							
2019	1	2	3	4	5	6	7	8	9	10	11	12	13	14	15	16	17	18	19	20	21	22	23	24	25	26	27	28	29	30	31
	-	-	-	-	-	-	-	-	-	-	-	-	-	-	-	-	-	-	-	-	-	-	-	-	-	-	-	-	-	-	

Jan	W	Th	F	Sa	Su	M	Tu	W	Th	F	Sa	Su	M	Tu	W	Th	F	Sa	Su	M	Tu	W	Th	F							
2020	1	2	3	4	5	6	7	8	9	10	11	12	13	14	15	16	17	18	19	20	21	22	23	24	25	26	27	28	29	30	31
	-	-	-	-	-	-	-	-	-	-	-	-	-	-	-	-	-	-	-	-	-	-	-	-	-	-	-	-	-	-	

Feb	Sa	Su	M	Tu	W	Th	F	Sa	Su	M	Tu	W	Th	F	Sa	Su	M	Tu	W	Th	F	Sa							
2020	1	2	3	4	5	6	7	8	9	10	11	12	13	14	15	16	17	18	19	20	21	22	23	24	25	26	27	28	29
	-	-	-	-	-	-	-	-	-	-	-	-	-	-	-	-	-	-	-	-	-	-	-	-	-	-	-	-	-

Mar	Su	M	Tu	W	Th	F	Sa	Su	M	Tu	W	Th	F	Sa	Su	M	Tu	W	Th	F	Sa	Su	M	Tu							
2020	1	2	3	4	5	6	7	8	9	10	11	12	13	14	15	16	17	18	19	20	21	22	23	24	25	26	27	28	29	30	31
	-	-	-	-	-	-	-	-	-	-	-	-	-	-	-	-	-	-	-	-	-	-	-	-	-	-	-	-	-	-	

Mid season
  High season
  Reserved
  Festive specials





Charming holiday letting  
Province of A Coruña - Galicia  
"Palmeira"

9

[Book now](#)

Availability calendar - from : march 2020

Apr	W	Th	F	Sa	Su	M	Tu	W	Th	F	Sa	Su	M	Tu	W	Th	F	Sa	Su	M	Tu	W	Th							
2020	1	2	3	4	5	6	7	8	9	10	11	12	13	14	15	16	17	18	19	20	21	22	23	24	25	26	27	28	29	30
-	-	-	-	-	-	-	-	-	-	-	-	-	-	-	-	-	-	-	-	-	-	-	-	-	-	-	-	-	-	

May	F	Sa	Su	M	Tu	W	Th	F	Sa	Su	M	Tu	W	Th	F	Sa	Su	M	Tu	W	Th	F	Sa	Su							
2020	1	2	3	4	5	6	7	8	9	10	11	12	13	14	15	16	17	18	19	20	21	22	23	24	25	26	27	28	29	30	31
-	-	-	-	-	-	-	-	-	-	-	-	-	-	-	-	-	-	-	-	-	-	-	-	-	-	-	-	-	-	-	

■ Mid season
 ■ High season
 ■ Reserved
 ■ Festive specials

[Month : Next >>](#)

Rental rates - Charming Penthouse - from 1 to 8 Person(s)

Rates	Night	Weekend	week	2 weeks	Month
<span style="color: #008000;">■</span> Low season	£58*	£223*	£356*	£623*	£890*
<span style="color: #0000FF;">■</span> Mid season	£102* > 7	-	£712* (Sunday)	£1380* (Sunday)	£3115*
<span style="color: #FF0000;">■</span> High season	£120* (Sunday) > 7	£312*	£979* (Sunday)	£1914* (Sunday)	£3872* (Sunday)
<span style="color: #FF00FF;">■</span> Festive specials	£62* (Saturday) > 7	£223*	£534*	£979*	£1424* (Saturday)
<span style="color: #FFA500;">■</span> Promotional period	£71* > 3	£267*	£498*	£979*	£1780*

(Check-in day)
> Minimum Night

[Book now](#)



sitting room



sitting room



sitting room



view from the bedroom



view of the port

### Booking conditions

- **Reservation**

- Payment made upon reservation : 30% of rental sum
- Deposit required : £178\*

- **rentals**

- Service charges included
- Day tax included

### Accepted methods of payment

- International Money Order
- Bank transfer (wire)
- Cash

[▶ Book now](#)

[▶ Contact the owner](#)

Contact directly the property owners

[www.ihacom.co.uk](http://www.ihacom.co.uk)

Advert No.

52878

>> [Book now](#) <<

### Contact

Spoken languages



\* Converted at the rate indicated : €100 = \$116.85 = £89

Advert No. 52878

[www.ihacom.co.uk](http://www.ihacom.co.uk)

