

# Charming holiday letting Ostende "Florivan"

In this cozy cottage with all the comforts to make you feel immediately at home! The owner is available to you for questions personally!



**Charming Duplex** ground floor, separate entrance, in a(an) Charming House single storey

Setting : seaside

Capacity : from 1 to 5 person(s)

Bedroom(s) : 2

Room(s) : 3



Charmance ()  
Meublés de Tourisme (3 stars)



Theme breaks  
Nature discovery

Ostende - West Flanders - Flanders

Belgium

Advert No. 3231

www.ihacom.co.uk



>> HOLIDAY LETTINGS

BOOK DIRECT WITH THE OWNERS

### Charming holiday letting



Charming Duplex ground floor, separate entrance, in a(an) Charming House single storey

- **Ideal for all age groups**
- **View :** sea/ocean, garden/park, town, street/avenue
- **Setting :** seaside
- **Exposure :** South-east

" Extras: digital tv and free internet access (wifi). Board games and read books in several languages. Kitchen fully equipped with generous amenities and even herbs. Tea and coffee service upon arrival. Washing machine on request. No parking problems: free car parking in front of or close to the House. In the Mediterranean garden with covered terrace you can enjoy a breakfast or a social gathering. The cottage is child-friendly decorated. Free baby cot and Chair. Pets welcome. Use of bed linen and towels (bath and kitchen) are included in the rental price. "

### Assets

- **Parking :**  
Parking uncovered
- **baby equipment :**  
Baby chair, baby potty

### Surroundings & location



" Ostend (Oostende): a port city with a glorious history and five beautiful beaches: the East Beach, the small beach, the large beach, the Mariakerkestrand and the Raversijdestrand. Especially suited for children. For them there is a special events guide "Oostende Ahoi" available at Tourism Ostend. Several points of interest. You can visit on your own using the Guidebook ' Alle 13 goed '. 1. Historical Museum De Plate, 2. James Ensorhuis, 3. Prins Karel Memorial, 4. the Atlantic wall, 5. Museum of Walraversijde, 6. Fort Napoleon, 7. the Japanese garden, 8. the three-master Mercator, 9. Museum of modern art, 10. Museum of fine arts, 11. Amandine (the last Iceland fishing boat of Ostend), 12. St. Peter's Tower, 13. The Peter and Paul church with the tomb of the first Queen of Belgium. Be sure to visit the surrounding polders, the picturesque village of Stene and the beautiful cities of Diksmuide and Veurne. "

#### Leisure

- **Leisure activities less than 20 km / 12 miles :**

Bathing, scuba diving, windsurfing, sailing, kite surfing, golf, tennis, riding school, pathway, coastal/forest paths, hiking, mountain bike (path), kite flying, flying (club), boat trips, horse trekking, mini-golf, skate board (ramps), go-karting, ten-pin bowling, paintball, fishing, angling, pétanque pitch

- **Attractions and relaxation :**

Restaurant, cinema, park and garden, nature reserve, exhibition centre, art gallery, historical site, museum, theatre, festivals, antiques & bric-a-brac, cellar and wine tasting, casino, racecourse, thermal baths, thalassotherapy centre, sauna, steam baths, health farm, beauticians

#### Surroundings

- **Locality :**  
Heated swimming pool 2.5mi.  
Sea/ocean 0.5mi.  
Sandy beach  
Nudist beach 4.5mi.  
Creek 3mi.  
Public swimming pool 2.5mi.  
Public tennis court 1.25mi.  
9 hole golf course 1.85mi.  
18 hole golf course 6mi.  
Windsurfing spots 1.85mi.  
Forest 15.5mi.  
Marina 2.5mi.

#### • Amenities :

- Bus stop / bus station 660'
- Tramway system 0.3mi.
- Breadshop 330'
- Supermarket 330'
- Bank 990'
- Cash point 990'
- Chemist 660'
- Hospital 1.85mi.



kitchen



living room



separate kitchen

### Interior

- **Receive up to :**  
from 1 to 5 person(s) (4 adults, 1 children)
- **Liveable floor area :**  
650 Sq.ft.
- **Interior layout :**  
3 Room(s), 2 bedroom(s), 1 bathroom, 1 shower room, 1 WC, living room 215 Sq.ft., separate kitchen, dining area, veranda
- **Sleeps - bed(s) :**  
1 double bed(s), 1 sofa bed(s) 2 pers, 2 single bed(s), 1 baby cot(s), 1 possible extra bed(s)
- **Guest facilities :**  
T.V., hi-fi system, videoplayer, DVD player, board games, book collection, film collection, cable/satelite, wifi, cupboard, hair dryer, power shower, fly screens, central heating, Curtains, Blinds, Double glazed, Rolling shutters, digipad entry system, fire alarm
- **Appliances :**  
Crockery/cuttlery, kitchen utensils, cafetiere, electric coffee maker, electric kettle, toaster, juicer, gas cooker, oven, micro-wave oven, extractor hood, refridgerator, freezer, dish washer, washing machine, vacuum cleaner, iron, ironing board

### Exterior

- **Ground surface :**  
2,150 Sq.ft.
- **Outside accommodation :**  
Covered terrace 215 Sq.ft., sundeck 215 Sq.ft.
- **Outside setting :**  
Private courtyard 323 Sq.ft., enclosed grounds 2,150 Sq.ft., garden 323 Sq.ft.
- **Outside amenities :**  
Garden table(s), 4 garden seat(s)



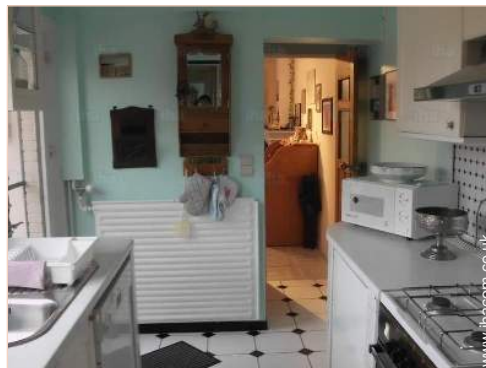
bathroom

### Services

- **Washing :**  
Sheets supplement (+£9\*), Towels, Linen, Beach towels, Blanket(s), Quilt(s), Pillows
- **House :**  
Cleaning on departure supplement (+£45\*), Garden/swimming pool maintenance, Parking

### For your guidance

- **For your guidance**  
Children welcome  
Pets accepted  
Non smoking rental  
Water : hot/cold  
Local voltage supply : 220V / 60Hz
- **Handicapped people welcome**  
Fitted out for the disabled : mobility, visually impaired, hard of hearing, mentally



separate kitchen



Floor plan



Photo album - 1



living room



kitchen

separate kitchen



separate kitchen

bathroom



Photo album - 2



bedroom



bedroom



bedroom



bedroom



garden



covered terrace



Photo album - 3



covered terrace

garden



the house

shower room



seaside pursuits nearby

nature reserve



seaside pursuits nearby

[Theme breaks](#)

Nature discovery



[Favourite photo gallery - 1](#)



Apr 2017

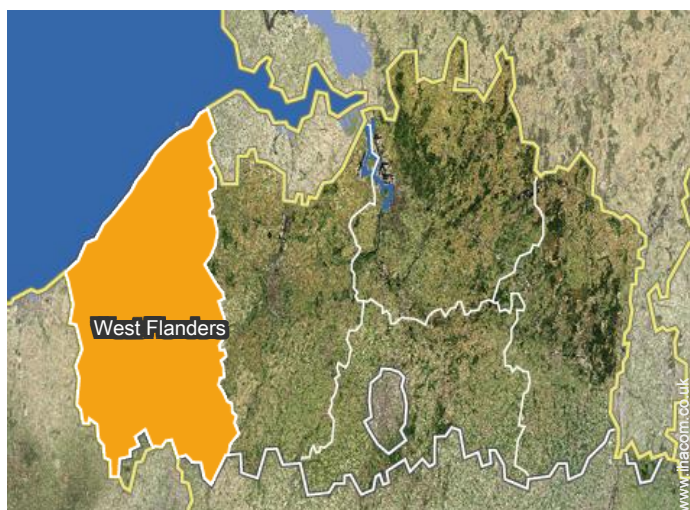


Nov 2017




Nov 2017

### Location



### Location & Access

" The House is quietly located in a better residential area and easily accessible with public transport. Only 10 walking minutes from the beautiful and wide sandy beach! Also Bruges, Ghent, Antwerp and Brussels are from Ostend very easily accessible by train. "

 GPS coordinates in degrees, minutes, seconds: Latitude 51°12'39"N - Longitude 2° 52'57"E (Dwelling)

#### Address

→ Stokkellaan 175  
8400 Ostende

● Motorway (junction) A10

→ Ostende, West Flanders, Flanders, Belgium

→ Distance : 65'  
→ Time : 5'

● Train station Ostend

→ Ostende, West Flanders, Flanders, Belgium

→ Distance : 65'  
→ Time : 5'

● Airport Ostende Bruges

→ Ostende, West Flanders, Flanders, Belgium

→ Distance : 0.5mi.  
→ Time : 5'

● Bruges : (12.5mi.)

### Contact

Spoken languages



# Charming holiday letting West Flanders - Ostende "Florivan"

## Availability calendar - from : february 2019

Feb	F	Sa	Su	M	Tu	W	Th	F	Sa	Su	M	Tu	W	Th	F	Sa	Su	M	Tu	W	Th							
2019	1	2	3	4	5	6	7	8	9	10	11	12	13	14	15	16	17	18	19	20	21	22	23	24	25	26	27	28

Mar	F	Sa	Su	M	Tu	W	Th	F	Sa	Su	M	Tu	W	Th	F	Sa	Su	M	Tu	W	Th	F	Sa	Su							
2019	1	2	3	4	5	6	7	8	9	10	11	12	13	14	15	16	17	18	19	20	21	22	23	24	25	26	27	28	29	30	31

Apr	M	Tu	W	Th	F	Sa	Su	M	Tu	W	Th	F	Sa	Su	M	Tu	W	Th	F	Sa	Su	M	Tu							
2019	1	2	3	4	5	6	7	8	9	10	11	12	13	14	15	16	17	18	19	20	21	22	23	24	25	26	27	28	29	30

May	W	Th	F	Sa	Su	M	Tu	W	Th	F	Sa	Su	M	Tu	W	Th	F	Sa	Su	M	Tu	W	Th	F							
2019	1	2	3	4	5	6	7	8	9	10	11	12	13	14	15	16	17	18	19	20	21	22	23	24	25	26	27	28	29	30	31

June	Sa	Su	M	Tu	W	Th	F	Sa	Su	M	Tu	W	Th	F	Sa	Su	M	Tu	W	Th	F	Sa	Su							
2019	1	2	3	4	5	6	7	8	9	10	11	12	13	14	15	16	17	18	19	20	21	22	23	24	25	26	27	28	29	30

Jul	M	Tu	W	Th	F	Sa	Su	M	Tu	W	Th	F	Sa	Su	M	Tu	W	Th	F	Sa	Su	M	Tu	W							
2019	1	2	3	4	5	6	7	8	9	10	11	12	13	14	15	16	17	18	19	20	21	22	23	24	25	26	27	28	29	30	31

Aug	Th	F	Sa	Su	M	Tu	W	Th	F	Sa	Su	M	Tu	W	Th	F	Sa	Su	M	Tu	W	Th	F	Sa							
2019	1	2	3	4	5	6	7	8	9	10	11	12	13	14	15	16	17	18	19	20	21	22	23	24	25	26	27	28	29	30	31

Sep	Su	M	Tu	W	Th	F	Sa	Su	M	Tu	W	Th	F	Sa	Su	M	Tu	W	Th	F	Sa	Su	M							
2019	1	2	3	4	5	6	7	8	9	10	11	12	13	14	15	16	17	18	19	20	21	22	23	24	25	26	27	28	29	30

Oct	Tu	W	Th	F	Sa	Su	M	Tu	W	Th	F	Sa	Su	M	Tu	W	Th	F	Sa	Su	M	Tu	W	Th							
2019	1	2	3	4	5	6	7	8	9	10	11	12	13	14	15	16	17	18	19	20	21	22	23	24	25	26	27	28	29	30	31

Nov	F	Sa	Su	M	Tu	W	Th	F	Sa	Su	M	Tu	W	Th	F	Sa	Su	M	Tu	W	Th	F	Sa							
2019	1	2	3	4	5	6	7	8	9	10	11	12	13	14	15	16	17	18	19	20	21	22	23	24	25	26	27	28	29	30

Reserved
  Low season
  Mid season
  High season





Charming holiday letting  
Flanders - Belgium  
"Florivan"

12  
[Book now](#)

Availability calendar - from : november 2019

Dec	Su	M	Tu	W	Th	F	Sa	Su	M	Tu	W	Th	F	Sa	Su	M	Tu	W	Th	F	Sa	Su	M	Tu							
2019	1	2	3	4	5	6	7	8	9	10	11	12	13	14	15	16	17	18	19	20	21	22	23	24	25	26	27	28	29	30	31
	-	-	-	-	-	-	-	-	-	-	-	-	-	-	-	-	-	-	-	-	-	-	-	-	-	-	-	-	-	-	

Jan	W	Th	F	Sa	Su	M	Tu	W	Th	F	Sa	Su	M	Tu	W	Th	F	Sa	Su	M	Tu	W	Th	F							
2020	1	2	3	4	5	6	7	8	9	10	11	12	13	14	15	16	17	18	19	20	21	22	23	24	25	26	27	28	29	30	31
	-	-	-	-	-	-	-	-	-	-	-	-	-	-	-	-	-	-	-	-	-	-	-	-	-	-	-	-	-	-	

Reserved
  Low season
  Mid season
  High season

[Month : Next >>](#)

Rental rates - Charming Duplex - from 1 to 5 Person(s)

Rates	Night	Weekend	week	2 weeks	Month
<span style="color: green;">■</span> Low season	-	£103*	£299*	-	-
<span style="color: blue;">■</span> Mid season	-	£114*	£349*	-	-
<span style="color: red;">■</span> High season	-	-	£436*	-	-

[Book now](#)

Booking conditions

• Reservation

- Payment made upon reservation : 50% of rental sum
- Payment balance : on handing over the keys
- Deposit required : £178\*

• rentals

- Service charges to be added
- Day tax included
- Cleaning charge levy on departure : £45\*

[▶ Book now](#)

[▶ Contact the owner](#)

Accepted methods of payment

- Bank transfer (wire) • Cash

Contact directly the property owners

[www.ihacom.co.uk](http://www.ihacom.co.uk)  
**Advert No.**  
**3231**  
**>> Book now <<**

Contact

Spoken languages



\* Converted at the rate indicated : €100 = \$116.85 = £89

Advert No. 3231

[www.ihacom.co.uk](http://www.ihacom.co.uk)

