

Charming holiday letting Nouméa "Yellow Studio Anse Vata"

The studio is located at the epicenter of tourist areas of Anse Vata -
Receiving - Baie des Citrons.



Charming Maisonette, semi-detached,
single storey, separate entrance, in a(an)
Charming Property

Setting : quiet, tropical

Capacity : **from 1 to 2 person(s)**

Bedroom(s) : 1

Room(s) : 1

Nouméa - South Province - Grande-Terre (New Caledonia)
New Caledonia

Reservation : +687 (0) 765898 (New Caledonia)

Advert No. 44763

www.ihacom.co.uk



Charming holiday letting



Charming Maisonette, semi-detached, single storey, separate entrance, in a(an) Charming Property

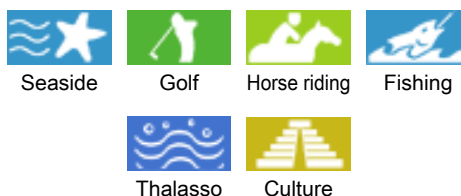
- **Ideal for all age groups, couples**
- **View** : unobscured, not overlooked, sea/ocean, garden/park, town, nightlights
- **Setting** : quiet, tropical
- **Exposure** : South

" The studio, which is attached to our House, boasts a small tropical garden. There is always a bit of wind because we are not far from the sea. The area is very quiet and safe. We are listening to the requests of our tenants and make sure they spend a good stay. The studio is also ideal for a single woman who feels secure by our presence. "

Assets

- **Swimming pool** :
 Private swimming-pool, rectangular (length 26', width 11.5'), cascading, illuminated, wave machine, steps in, outside shower (open from '01 january' till '31 december')
- **Parking** :
 Parking uncovered
- **Advantages** :
 Piano, 2 bike(s), 2 snorkelling equipment

Surroundings & location



" In the area of Anse Vata, you will find various nautical activities; windsurfing, SUP, Kiteboarding, snorkeling, hiking..., scuba diving, outputs at sea, restaurants, shopping, nearby health service. Feel free to ask us if you want more information or advice for your visits. "

Leisure

- **Leisure activities less than 20 km / 12 miles** :
 Bathing, snorkelling, scuba diving, water skiing, jet ski, surfing, windsurfing, sailing, kite surfing, canoeing, golf, tennis, riding school, pony club, pathway, coastal/forest paths, hiking, mountain bike (path), parachuting, paragliding, boat trips, horse trekking, rollerblade/rollerskate (circuit), skate board (ramps), go-karting, ten-pin bowling, acrobanch, deep-sea angling, spear fishing
- **Supervised** :
 Sailing school, dive school, tennis school, riding school

Surroundings

- **Locality** :
 Sandy beach 0.3mi.
 Public swimming pool 1.85mi.
 Public tennis court 3mi.
 18 hole golf course 660'
 Windsurfing spots 1.25mi.
 River 18.5mi.
 Lake 18.5mi.
 Forest 6mi.
 Mountain range 9mi.
 Jetski slipway 1.25mi.



view from the kitchen



view from the bedroom



Kitchen Area

Interior

- **Receive up to :**
from 1 to 2 person(s) (2 adults)
- **Liveable floor area :**
215 Sq.ft.
- **Interior layout :**
1 Room(s), 1 bedroom(s), 1 shower room, WC, american style kitchen, dining area, dressing room, laundry room, patio
- **Sleeps - bed(s) :**
1 king-size bed(s)
- **Guest facilities :**
T.V., DVD player, board games, book collection, t.v points, wifi, Hanging wardrobe, fully air conditioned, Curtains
- **Appliances :**
Crockery/cutlery, kitchen utensils, electric espresso coffee maker, electric kettle, toaster, electric hobs, micro-wave oven, refrigerator, freezer, washing machine, clothes dryer, vacuum cleaner, iron, ironing board

Exterior

- **Ground surface :**
< 1,076 Sq.ft.
- **Outside setting :**
Enclosed grounds, tropical garden 160 Sq.ft.
- **Outside amenities :**
2 garden seat(s), garden seated area



nearby

Services

- **Washing :**
Sheets (1 X / per week), Towels (1 X / per week), Linen (1 X / per week), Beach towels (1 X / per week), Blanket(s), Quilt(s), Pillows
- **House :**
Cleaning on departure supplement (+£36*), Parking
- **Personnel :**
Laundry (1 X / per week)
- **Restauration :**
Guest table supplement (2 X / per week + £71*), Picnic basket supplement (2 X / per week +£27*)

For your guidance

- **For your guidance**
No pet allowed
Mobile telephone network coverage
Water : hot/cold
Local voltage supply : 220-240V / 50Hz
Electricity supply : mains



shower room

Photo album - 1



view from the bedroom



view from the kitchen

Kitchen Area



shower room

nearby

Photo album - 2



summer sports nearby



Seaside



museum



panorama



bus stop / bus station



park and garden



park and garden



leisure pursuits nearby

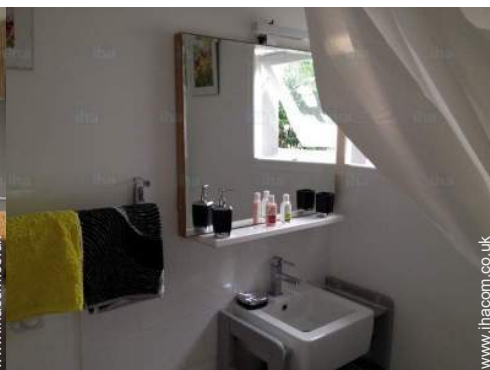
Photo album - 3



nearby



dressing room



shower room



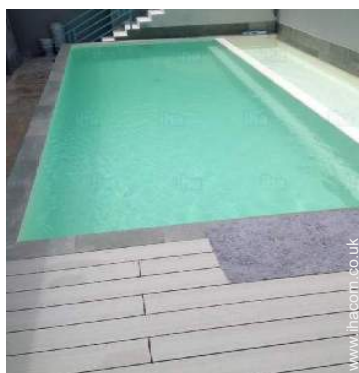
garden/park view



shower room



outside



view from the swimming pool

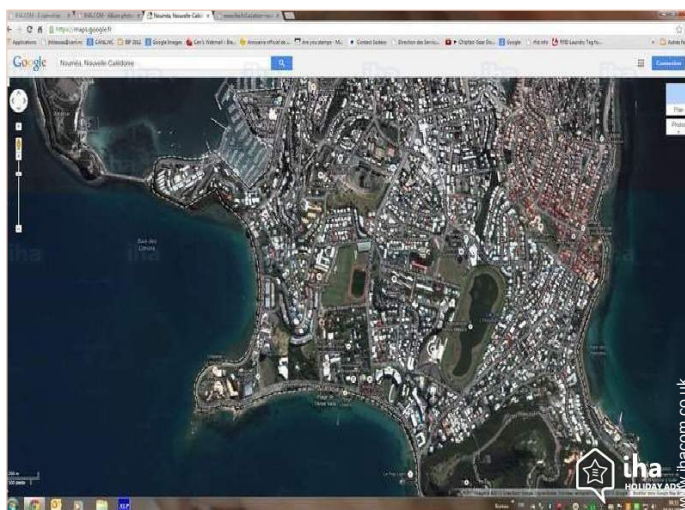


Cascading swimming pool




Cascading swimming pool

Route map



Location & Access

" Our House and studio are in Anse Vata, 5 rue Gabriel Busiau. You can move by feet without problem. "

 GPS coordinates in degrees, minutes, seconds: Latitude 22° 17'44"S - Longitude 166°26'37"E ([Dwelling](#))

Address

→ 5 rue Busiau
98800 Nouméa

• [Airport La Tontouta](#)

→ Nouméa, South Province, Grande-Terre
(New Caledonia), New Caledonia

→ Distance : 23,6mi.

→ Time : 40'

- Dumbéa : (6mi.)
- Païta : (18.5mi.)

Contact

Spoken
languages



Location



Charming holiday letting
 Nouméa - New Caledonia
"Yellow Studio Anse Vata"

[Book now](#)

Availability calendar - from : may 2019

May	W	Th	F	Sa	Su	M	Tu	W	Th	F	Sa	Su	M	Tu	W	Th	F	Sa	Su	M	Tu	W	Th	F							
2019	1	2	3	4	5	6	7	8	9	10	11	12	13	14	15	16	17	18	19	20	21	22	23	24	25	26	27	28	29	30	31
																						-	-	-	-	-	-	-	-	-	-

June	Sa	Su	M	Tu	W	Th	F	Sa	Su	M	Tu	W	Th	F	Sa	Su	M	Tu	W	Th	F	Sa	Su							
2019	1	2	3	4	5	6	7	8	9	10	11	12	13	14	15	16	17	18	19	20	21	22	23	24	25	26	27	28	29	30
	-	-	-	-	-	-	-	-	-	-	-	-	-	-	-	-	-	-	-	-	-	-	-	-	-	-	-	-	-	-

Jul	M	Tu	W	Th	F	Sa	Su	M	Tu	W	Th	F	Sa	Su	M	Tu	W	Th	F	Sa	Su	M	Tu	W	Th	F	Sa	Su	M	Tu	W
2019	1	2	3	4	5	6	7	8	9	10	11	12	13	14	15	16	17	18	19	20	21	22	23	24	25	26	27	28	29	30	31
	-	-	-	-	-	-	-	-	-	-	-	-	-	-	-	-	-	-	-	-	-	-	-	-	-	-	-	-	-	-	-

Aug	Th	F	Sa	Su	M	Tu	W	Th	F	Sa	Su	M	Tu	W	Th	F	Sa	Su	M	Tu	W	Th	F	Sa	Su	M	Tu	W	Th	F	Sa
2019	1	2	3	4	5	6	7	8	9	10	11	12	13	14	15	16	17	18	19	20	21	22	23	24	25	26	27	28	29	30	31
	-	-	-	-	-	-	-	-	-	-	-	-	-	-	-	-	-	-	-	-	-	-	-	-	-	-	-	-	-	-	-

Sep	Su	M	Tu	W	Th	F	Sa	Su	M	Tu	W	Th	F	Sa	Su	M	Tu	W	Th	F	Sa	Su	M	Tu	W	Th	F	Sa	Su	M
2019	1	2	3	4	5	6	7	8	9	10	11	12	13	14	15	16	17	18	19	20	21	22	23	24	25	26	27	28	29	30
	-	-	-	-	-	-	-	-	-	-	-	-	-	-	-	-	-	-	-	-	-	-	-	-	-	-	-	-	-	-

Oct	Tu	W	Th	F	Sa	Su	M	Tu	W	Th	F	Sa	Su	M	Tu	W	Th	F	Sa	Su	M	Tu	W	Th	F	Sa	Su	M	Tu	W	Th
2019	1	2	3	4	5	6	7	8	9	10	11	12	13	14	15	16	17	18	19	20	21	22	23	24	25	26	27	28	29	30	31
	-	-	-	-	-	-	-	-	-	-	-	-	-	-	-	-	-	-	-	-	-	-	-	-	-	-	-	-	-	-	-

Nov	F	Sa	Su	M	Tu	W	Th	F	Sa	Su	M	Tu	W	Th	F	Sa	Su	M	Tu	W	Th	F	Sa	Su	M	Tu	W	Th	F	Sa
2019	1	2	3	4	5	6	7	8	9	10	11	12	13	14	15	16	17	18	19	20	21	22	23	24	25	26	27	28	29	30
	-	-	-	-	-	-	-	-	-	-	-	-	-	-	-	-	-	-	-	-	-	-	-	-	-	-	-	-	-	-

Dec	Su	M	Tu	W	Th	F	Sa	Su	M	Tu	W	Th	F	Sa	Su	M	Tu	W	Th	F	Sa	Su	M	Tu	W	Th	F	Sa	Su	M	Tu
2019	1	2	3	4	5	6	7	8	9	10	11	12	13	14	15	16	17	18	19	20	21	22	23	24	25	26	27	28	29	30	31
	-	-	-	-	-	-	-	-	-	-	-	-	-	-	-	-	-	-	-	-	-	-	-	-	-	-	-	-	-	-	-

Jan	W	Th	F	Sa	Su	M	Tu	W	Th	F	Sa	Su	M	Tu	W	Th	F	Sa	Su	M	Tu	W	Th	F	Sa	Su	M	Tu	W	Th	F
2020	1	2	3	4	5	6	7	8	9	10	11	12	13	14	15	16	17	18	19	20	21	22	23	24	25	26	27	28	29	30	31
	-	-	-	-	-	-	-	-	-	-	-	-	-	-	-	-	-	-	-	-	-	-	-	-	-	-	-	-	-	-	-

Feb	Sa	Su	M	Tu	W	Th	F	Sa	Su	M	Tu	W	Th	F	Sa	Su	M	Tu	W	Th	F	Sa							
2020	1	2	3	4	5	6	7	8	9	10	11	12	13	14	15	16	17	18	19	20	21	22	23	24	25	26	27	28	29
	-	-	-	-	-	-	-	-	-	-	-	-	-	-	-	-	-	-	-	-	-	-	-	-	-	-	-	-	-



Charming holiday letting
Grande-Terre (New Caledonia) - Nouméa
"Yellow Studio Anse Vata"

10
[Book now](#)

Availability calendar - from : february 2020

Mar	Su	M	Tu	W	Th	F	Sa	Su	M	Tu	W	Th	F	Sa	Su	M	Tu	W	Th	F	Sa	Su	M	Tu							
2020	1	2	3	4	5	6	7	8	9	10	11	12	13	14	15	16	17	18	19	20	21	22	23	24	25	26	27	28	29	30	31
-	-	-	-	-	-	-	-	-	-	-	-	-	-	-	-	-	-	-	-	-	-	-	-	-	-	-	-	-	-	-	

Apr	W	Th	F	Sa	Su	M	Tu	W	Th	F	Sa	Su	M	Tu	W	Th	F	Sa	Su	M	Tu	W	Th							
2020	1	2	3	4	5	6	7	8	9	10	11	12	13	14	15	16	17	18	19	20	21	22	23	24	25	26	27	28	29	30
-	-	-	-	-	-	-	-	-	-	-	-	-	-	-	-	-	-	-	-	-	-	-	-	-	-	-	-	-	-	

[Month : Next >>](#)

Rental rates - Charming Maisonette - from 1 to 2 Person(s)

Rates	Night	Weekend	week	2 weeks	Month
 Low season	£46*	-	-	-	-
 Mid season	£49*	-	-	-	-
 High season	£52*	-	-	-	-

[Book now](#)

Booking conditions

• Reservation

→ Payment made upon reservation :
50% of rental sum
→ Payment balance :
on handing over the keys

• rentals

→ Service charges included
→ Day tax included
→ Cleaning charge levy on departure : £36*

[▶ Book now](#)

[▶ Contact the owner](#)

Accepted methods of payment

• Bank transfer (wire) • Cheque • Bankers draft • PayPal • Cash

Contact directly the property owners

www.ihacom.co.uk

Advert No.

44763

[>> Book now <<](#)

Contact

Spoken languages



* Converted at the rate indicated : €100 = \$116.85 = £89

Advert No. 44763

www.ihacom.co.uk

