

Charming holiday letting Neustift im Stubaital "Ferienwohnung Span"

House located in a beautiful and quiet location in the village of Milders, 2 km into the Valley from the village centre Neustift located near a branch.



Charming Apartment ground floor, shared entrance, in a(an) Charming House 3 floors

Setting : mountainy, sporty

Capacity : **from 2 to 4 person(s)**

Bedroom(s) : **2**

Room(s) : **2**

Neustift im Stubaital - Tyrol

Austria

Reservation : +43 (0) 522562019 (Austria)

Advert No. 25662

www.ihacom.co.uk



Charming holiday letting



Charming Apartment ground floor, shared entrance, in a(an) Charming House 3 floors

- **Ideal for all age groups, sporty types**
- **View :** mountain, country side, village
- **Setting :** mountainy, sporty
- **Exposure :** East

"The apartment is ca. 65 square meters large and is located on the ground floor. It consists of a kitchen-living room, kitchen, dining area, couch, 2 four bed rooms with washbasin (1 double - 1 bunk bed) shower with 2 washbasins, separate toilet, vestibule. The apartments are comfortable and fully equipped. Electric cooker, oven, extractor, dishwasher, fridge, microwave oven, coffee machine, kettle, cooking and dinnerware, color TV with cable channels, radio, dishes and towels, bedding, safe, Internet (W-LAN)."

Assets

- **Parking :**
Parking uncovered : 2 off road.
- **Advantages :**
Ski locker, ski boot warmer



Kitchen Area

Surroundings & location



Mountain



Ski

"The Stubai Valley is located near the Tyrolean capital of Innsbruck - directly on the Brenner motorway. Despite this extremely convenient location, the Valley has retained its picturesque authenticity. 35 km away, the Stubai Alps stretches with their 80 glaciers and 109 mountains deep in the overwhelmingly beautiful mountains. Highest and most famous mountain in a series of impressive Giants is the Zuckerhütl 3.507 m. Generous bypasses bring an atmosphere of tranquility and close bond with nature - the five main cities of Schönberg, Mieders, Telfes, Fulpmes and Neustift ideal, to enjoy the splendid panorama and the unparalleled leisure opportunities to the best."

Leisure

- **Leisure activities less than 20 km / 12 miles :**

Alpine skiing, cross-country skiing, off-piste skiing, ski-trekking, Télémart skiing, snowboarding, luge (run), ice-skating, bathing, golf, tennis, coastal/forest paths, hiking, climbing, rock climbing, kite flying, hang-gliding, paragliding, horse-drawn carriage, mini-golf

- **Supervised :**

Ski school, tennis school

- **Attractions and relaxation :**

Restaurant, theatre, sauna

Surroundings

- **Locality :**

Ski slopes 1.85mi.
Ski lifts 1.85mi.
Ice skating rink 1.85mi.
Heated swimming pool 1.5mi.
Public swimming pool 1.5mi.
Forest 660'

- **Amenities :**

Village centre 1.5mi.
Town centre 1.5mi.
Bus stop / bus station 990'
Ski bus pick up point 990'
Ski hire shop 990'
Breadshop 1.5mi.
Caterer 1.5mi.
Local shops 990'
Supermarket 1.5mi.
Hairdressing salon 1.25mi.
Post office 1.5mi.
Bank 1.5mi.
Cash point 660'
Chemist 1.5mi.
Doctor 1.5mi.
Hospital 15.5mi.
Dispensing clinic 4.5mi.



master bedroom



interior

Interior

- **Receive up to :**
from 2 to 4 person(s) (4 adults)
- **Liveable floor area :**
700 Sq.ft.
- **Interior layout :**
2 Room(s), 2 bedroom(s), 1 bathroom, 1 WC
- **Sleeps - bed(s) :**
2 double bed(s), 2 bunk beds
- **Guest facilities :**
T.V., cable/satelite, wifi, wardrobe, Hanging wardrobe, central heating, Curtains, Blinds, entry phone system, digipad entry system
- **Appliances :**
Crockery/cuttlery, kitchen utensils, cafetiére, electric coffee maker, electric kettle, electric cooker, extractor hood, refridgerator, dish washer, vacuum cleaner

Exterior

- **Outside accommodation :**
Terrace 55 Sq.ft.

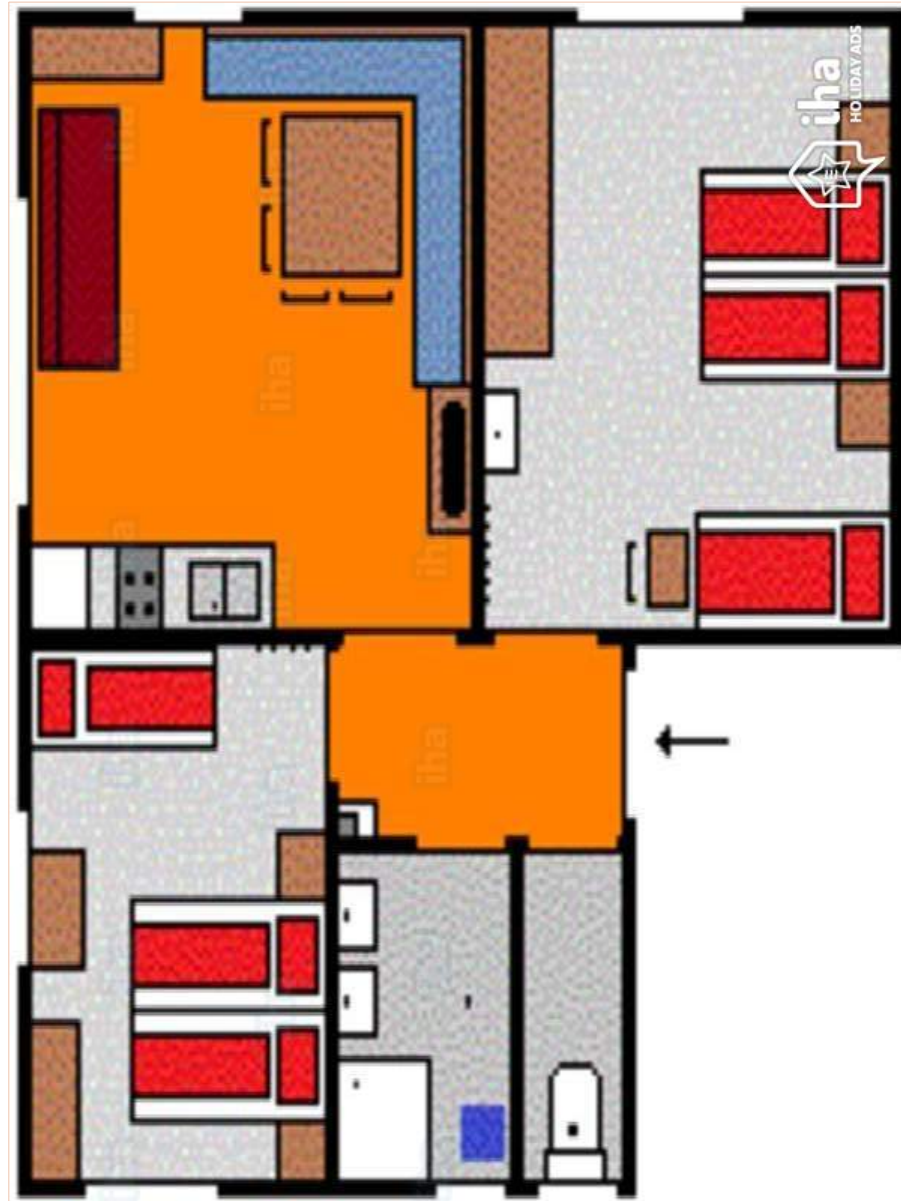
Services

- **Washing :**
Sheets (1 X / per week), Towels (2 X / per week), Linen (1 X / per week), Blanket(s) (1 X / per week), Quilt(s) (1 X / per week), Pillows (1 X / per week)
- **House :**
Cleaning on departure supplement (+£40*), Snow clearance, Parking

For your guidance

- **For your guidance**
Children welcome
No pet allowed
Non smoking rental, mobile telephone network coverage, personal transport advisable
Water : hot/cold
Local voltage supply : 220-240V / 50Hz
Electricity supply : mains

Floor plan



www.ihacom.co.uk

Photo album - 1



Kitchen Area



interior



master bedroom

[Favourite photo gallery - 1](#)



Aug 2016



Aug 2016



Aug 2016



Jul 2016



Jan 2017

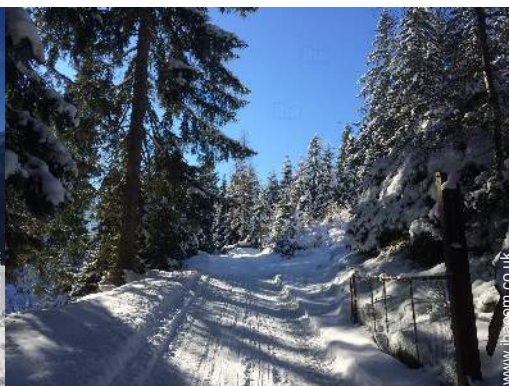


Jan 2017

[Favourite photo gallery - 2](#)



Jan 2017



Jan 2017



Mar 2019



Mar 2019



Mar 2019



Mar 2019



Mar 2019




Mar 2019

Route map



Location & Access

" Our House is situated 2 km into the Valley from the village centre of Neustift. In Milters bus station, turn Milters bridge the first way (Mill Road) turn right and after about 150 m, you will see our House on the left side. "

 GPS coordinates in degrees, minutes, seconds: Latitude 47° 6'5"N - Longitude 11° 16'60"E ([Dwelling](#))

Address

→ Mühlenweg 25
6167 Neustift im Stubaital

• Motorway (junction) A 13

→ Schönberg im Stubaital, Tyrol, Austria
→ Distance : 11,2mi.
→ Time : 20'

• Airport Innsbruck Kranebitten

→ Innsbruck, Tyrol, Austria
→ Distance : 16,8mi.
→ Time : 30'

• Train station Innsbruck Hauptbahnhof

→ Innsbruck, Tyrol, Austria
→ Distance : 17,5mi.
→ Time : 30'

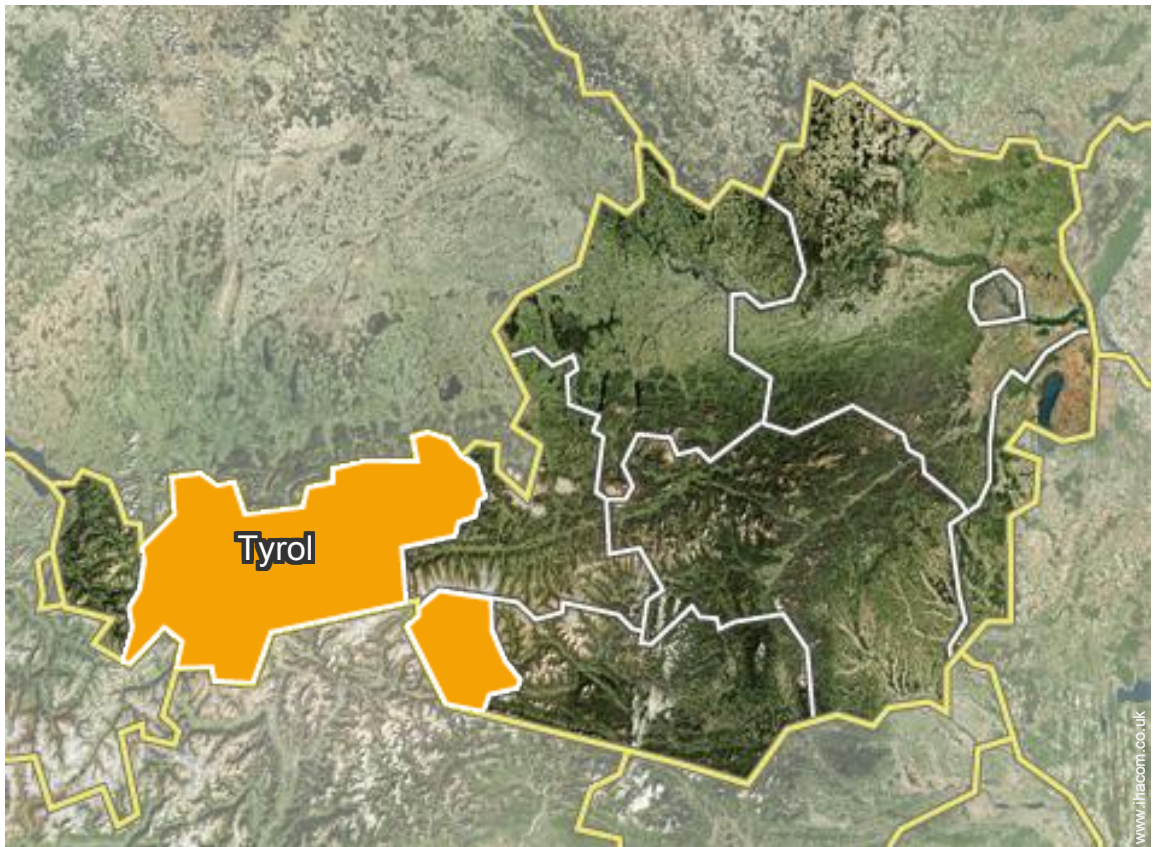
• Innsbruck : (17,5mi.)

Contact

Spoken languages



Location



Charming holiday letting
Neustift im Stubaital - Austria
"Ferienwohnung Span"

10
Book now

Availability calendar - from : march 2019

| Mar | F | Sa | Su | M | Tu | W | Th | F | Sa | Su | M | Tu | W | Th | F | Sa | Su | M | Tu | W | Th | F | Sa | Su | M | Tu | W | Th | F | Sa | Su | |
|------|---|----|----|---|----|---|----|---|----|----|----|----|----|----|----|----|----|----|----|----|----|----|----|----|----|----|----|----|----|----|----|---|
| 2019 | 1 | 2 | 3 | 4 | 5 | 6 | 7 | 8 | 9 | 10 | 11 | 12 | 13 | 14 | 15 | 16 | 17 | 18 | 19 | 20 | 21 | 22 | 23 | 24 | 25 | 26 | 27 | 28 | 29 | 30 | 31 | |
| | | | | | | | | | | | | | | | | | | | | | | | | - | - | - | - | - | - | - | - | - |

| Apr | M | Tu | W | Th | F | Sa | Su | M | Tu | W | Th | F | Sa | Su | M | Tu | W | Th | F | Sa | Su | M | Tu | W | Th | F | Sa | Su | M | Tu |
|------|---|----|---|----|---|----|----|---|----|----|----|----|----|----|----|----|----|----|----|----|----|----|----|----|----|----|----|----|----|----|
| 2019 | 1 | 2 | 3 | 4 | 5 | 6 | 7 | 8 | 9 | 10 | 11 | 12 | 13 | 14 | 15 | 16 | 17 | 18 | 19 | 20 | 21 | 22 | 23 | 24 | 25 | 26 | 27 | 28 | 29 | 30 |
| | - | - | - | - | - | - | - | - | - | - | - | - | - | - | - | - | - | - | - | - | - | - | - | - | - | - | - | - | - | - |

| May | W | Th | F | Sa | Su | M | Tu | W | Th | F | Sa | Su | M | Tu | W | Th | F | Sa | Su | M | Tu | W | Th | F | Sa | Su | M | Tu | W | Th | F |
|------|---|----|---|----|----|---|----|---|----|----|----|----|----|----|----|----|----|----|----|----|----|----|----|----|----|----|----|----|----|----|----|
| 2019 | 1 | 2 | 3 | 4 | 5 | 6 | 7 | 8 | 9 | 10 | 11 | 12 | 13 | 14 | 15 | 16 | 17 | 18 | 19 | 20 | 21 | 22 | 23 | 24 | 25 | 26 | 27 | 28 | 29 | 30 | 31 |
| | - | - | - | - | - | - | - | - | - | - | - | - | - | - | - | - | - | - | - | - | - | - | - | - | - | - | - | - | - | - | - |

| June | Sa | Su | M | Tu | W | Th | F | Sa | Su | M | Tu | W | Th | F | Sa | Su | M | Tu | W | Th | F | Sa | Su | | | | | | | |
|------|----|----|---|----|---|----|---|----|----|----|----|----|----|----|----|----|----|----|----|----|----|----|----|----|----|----|----|----|----|----|
| 2019 | 1 | 2 | 3 | 4 | 5 | 6 | 7 | 8 | 9 | 10 | 11 | 12 | 13 | 14 | 15 | 16 | 17 | 18 | 19 | 20 | 21 | 22 | 23 | 24 | 25 | 26 | 27 | 28 | 29 | 30 |
| | - | - | - | - | - | - | - | - | - | - | - | - | - | - | - | - | - | - | - | - | - | - | - | - | - | - | - | - | - | - |

| Jul | M | Tu | W | Th | F | Sa | Su | M | Tu | W | Th | F | Sa | Su | M | Tu | W | Th | F | Sa | Su | M | Tu | W | Th | F | Sa | Su | M | Tu | W |
|------|---|----|---|----|---|----|----|---|----|----|----|----|----|----|----|----|----|----|----|----|----|----|----|----|----|----|----|----|----|----|----|
| 2019 | 1 | 2 | 3 | 4 | 5 | 6 | 7 | 8 | 9 | 10 | 11 | 12 | 13 | 14 | 15 | 16 | 17 | 18 | 19 | 20 | 21 | 22 | 23 | 24 | 25 | 26 | 27 | 28 | 29 | 30 | 31 |
| | - | - | - | - | - | - | - | - | - | - | - | - | - | - | - | - | - | - | - | - | - | - | - | - | - | - | - | - | - | - | - |

| Aug | Th | F | Sa | Su | M | Tu | W | Th | F | Sa | Su | M | Tu | W | Th | F | Sa | Su | M | Tu | W | Th | F | Sa | Su | M | Tu | W | Th | F | Sa |
|------|----|---|----|----|---|----|---|----|---|----|----|----|----|----|----|----|----|----|----|----|----|----|----|----|----|----|----|----|----|----|----|
| 2019 | 1 | 2 | 3 | 4 | 5 | 6 | 7 | 8 | 9 | 10 | 11 | 12 | 13 | 14 | 15 | 16 | 17 | 18 | 19 | 20 | 21 | 22 | 23 | 24 | 25 | 26 | 27 | 28 | 29 | 30 | 31 |
| | - | - | - | - | - | - | - | - | - | - | - | - | - | - | - | - | - | - | - | - | - | - | - | - | - | - | - | - | - | - | - |

| Sep | Su | M | Tu | W | Th | F | Sa | Su | M | Tu | W | Th | F | Sa | Su | M | Tu | W | Th | F | Sa | Su | M | Tu | W | Th | F | Sa | Su | M |
|------|----|---|----|---|----|---|----|----|---|----|----|----|----|----|----|----|----|----|----|----|----|----|----|----|----|----|----|----|----|----|
| 2019 | 1 | 2 | 3 | 4 | 5 | 6 | 7 | 8 | 9 | 10 | 11 | 12 | 13 | 14 | 15 | 16 | 17 | 18 | 19 | 20 | 21 | 22 | 23 | 24 | 25 | 26 | 27 | 28 | 29 | 30 |
| | - | - | - | - | - | - | - | - | - | - | - | - | - | - | - | - | - | - | - | - | - | - | - | - | - | - | - | - | - | - |

| Oct | Tu | W | Th | F | Sa | Su | M | Tu | W | Th | F | Sa | Su | M | Tu | W | Th | F | Sa | Su | M | Tu | W | Th | F | Sa | Su | M | Tu | W | Th |
|------|----|---|----|---|----|----|---|----|---|----|----|----|----|----|----|----|----|----|----|----|----|----|----|----|----|----|----|----|----|----|----|
| 2019 | 1 | 2 | 3 | 4 | 5 | 6 | 7 | 8 | 9 | 10 | 11 | 12 | 13 | 14 | 15 | 16 | 17 | 18 | 19 | 20 | 21 | 22 | 23 | 24 | 25 | 26 | 27 | 28 | 29 | 30 | 31 |
| | - | - | - | - | - | - | - | - | - | - | - | - | - | - | - | - | - | - | - | - | - | - | - | - | - | - | - | - | - | - | - |

| Nov | F | Sa | Su | M | Tu | W | Th | F | Sa | Su | M | Tu | W | Th | F | Sa | Su | M | Tu | W | Th | F | Sa | Su | M | Tu | W | Th | F | Sa |
|------|---|----|----|---|----|---|----|---|----|----|----|----|----|----|----|----|----|----|----|----|----|----|----|----|----|----|----|----|----|----|
| 2019 | 1 | 2 | 3 | 4 | 5 | 6 | 7 | 8 | 9 | 10 | 11 | 12 | 13 | 14 | 15 | 16 | 17 | 18 | 19 | 20 | 21 | 22 | 23 | 24 | 25 | 26 | 27 | 28 | 29 | 30 |
| | - | - | - | - | - | - | - | - | - | - | - | - | - | - | - | - | - | - | - | - | - | - | - | - | - | - | - | - | - | - |

| Dec | Su | M | Tu | W | Th | F | Sa | Su | M | Tu | W | Th | F | Sa | Su | M | Tu | W | Th | F | Sa | Su | M | Tu | W | Th | F | Sa | Su | M | Tu |
|------|----|---|----|---|----|---|----|----|---|----|----|----|----|----|----|----|----|----|----|----|----|----|----|----|----|----|----|----|----|----|----|
| 2019 | 1 | 2 | 3 | 4 | 5 | 6 | 7 | 8 | 9 | 10 | 11 | 12 | 13 | 14 | 15 | 16 | 17 | 18 | 19 | 20 | 21 | 22 | 23 | 24 | 25 | 26 | 27 | 28 | 29 | 30 | 31 |
| | - | - | - | - | - | - | - | - | - | - | - | - | - | - | - | - | - | - | - | - | - | - | - | - | - | - | - | - | - | - | - |

Mid season
 High season
 Low season
 Promotional period



Charming holiday letting
Tyrol - Neustift im Stubaital
"Ferienwohnung Span"

11
[Book now](#)

Availability calendar - from : december 2019

| Jan | W | Th | F | Sa | Su | M | Tu | W | Th | F | Sa | Su | M | Tu | W | Th | F | Sa | Su | M | Tu | W | Th | F | Sa | Su | M | Tu | W | Th | F |
|------|---|----|---|----|----|---|----|---|----|----|----|----|----|----|----|----|----|----|----|----|----|----|----|----|----|----|----|----|----|----|----|
| 2020 | 1 | 2 | 3 | 4 | 5 | 6 | 7 | 8 | 9 | 10 | 11 | 12 | 13 | 14 | 15 | 16 | 17 | 18 | 19 | 20 | 21 | 22 | 23 | 24 | 25 | 26 | 27 | 28 | 29 | 30 | 31 |
| - | - | - | - | - | - | - | - | - | - | - | - | - | - | - | - | - | - | - | - | - | - | - | - | - | - | - | - | - | - | - | |

| Feb | Sa | Su | M | Tu | W | Th | F | Sa | Su | M | Tu | W | Th | F | Sa | Su | M | Tu | W | Th | F | Sa | | | | | | | |
|------|----|----|---|----|---|----|---|----|----|----|----|----|----|----|----|----|----|----|----|----|----|----|----|----|----|----|----|----|----|
| 2020 | 1 | 2 | 3 | 4 | 5 | 6 | 7 | 8 | 9 | 10 | 11 | 12 | 13 | 14 | 15 | 16 | 17 | 18 | 19 | 20 | 21 | 22 | 23 | 24 | 25 | 26 | 27 | 28 | 29 |
| - | - | - | - | - | - | - | - | - | - | - | - | - | - | - | - | - | - | - | - | - | - | - | - | - | - | - | - | - | - |

■ Mid season
 ■ High season
 ■ Low season
 ■ Promotional period

[Month : Next >>](#)

Rental rates - Charming Apartment - from 2 to 4 Person(s)

| Rates | Night | Weekend | week | 2 weeks | Month |
|---|-------|---------|-------|---------|-------|
| ■ Low season | - | - | £405* | - | - |
| ■ Mid season | - | - | £685* | - | - |
| ■ High season | - | - | £779* | - | - |
| ■ Promotional period | - | - | £498* | - | - |

[Book now](#)

Booking conditions

- **Reservation**
→ Payment made upon reservation : £178*
→ Payment balance :
on handing over the keys
- **rentals**
→ Day tax in addition
→ Cleaning charge levy on departure : £45*

Accepted methods of payment

- Bank transfer (wire) • Cash

[▶ Book now](#)

[▶ Contact the owner](#)

Contact directly the property owners

www.ihacom.co.uk
Advert No.
25662
[>> Book now <<](#)

Contact

Spoken languages  

* Converted at the rate indicated : €100 = \$116.85 = £89

Advert No. 25662

www.ihacom.co.uk

