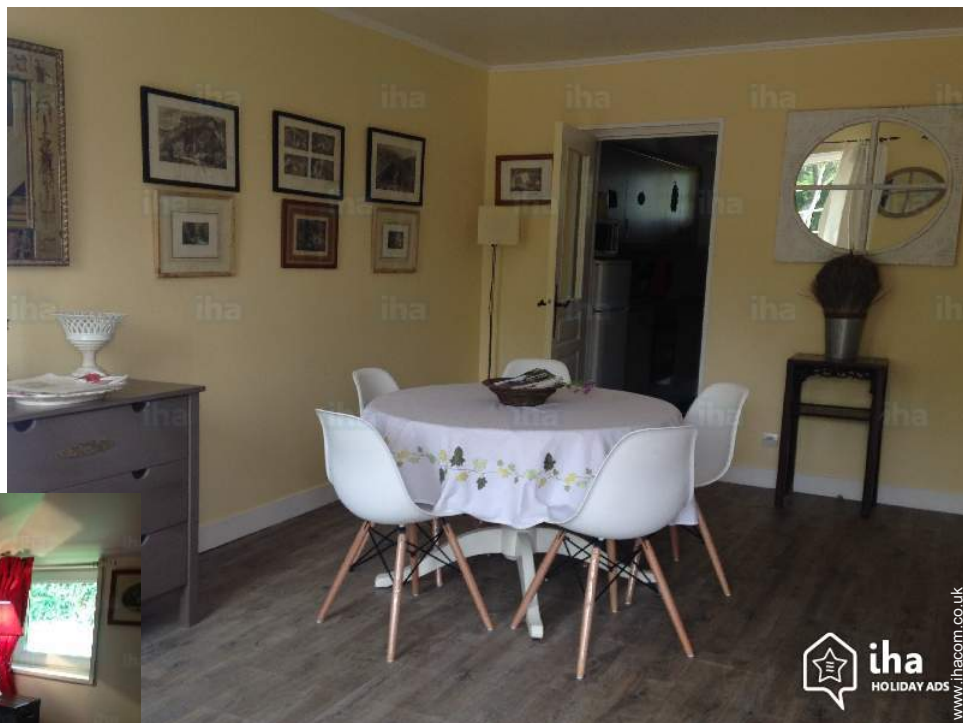


# Charming holiday letting Marolles "Domaine de Chaffe"

The scenery close to civilization, you are at the end of the world, in a dream campaign.



**Charming Country House**, detached, 1 floor, separate entrance, in a(an) Private property

Setting : country setting, suitable for a relaxing break

Capacity : **from 2 to 7 person(s)**

Bedroom(s) : **3**

Room(s) : **6**



Clé vacances (4 keys)  
Meublés de Tourisme

**Marolles - Calvados (14) - Lower Normandy**

**France**

Reservation : +33 (0) 2 31 32 00 72 (France)

Advert No. 52815

www.ihacom.co.uk



## Charming holiday letting



Charming Country House, detached, 1 floor, separate entrance, in a(an) Private property

- **Ideal for all age groups, honeymoon**
- **View :** panoramic, not overlooked, country side, swimming pool, farmland, river
- **Setting :** country setting, suitable for a relaxing break
- **Exposure :** South-west

" You have 10 hectares at your disposal for your walks, a picnic on the river. Deer and ducks you surprise because they are relatively fierce. "

## Assets

- **Swimming pool :**  
Private swimming-pool, rectangular (length 25', width 13'), heated, step ladder, child secure
- **Tennis :**  
Shared tennis
- **Parking :**  
Parking uncovered : 4 off road.
- **Advantages :**  
Table football
- **baby equipment :**  
Baby chair, baby potty, playpen

Benefits :  
Driving range

## Surroundings & location



Countryside Horse riding Fishing

" Discover the Pays d'Auge, its gardens and castles, you'll like Honfleur, Cabourg, Houlegate. If you get up early in the morning you will make a jump to the Mont Saint Michel. If the urge you take a round trip by train to Paris is easily available to you. "

### Leisure

- **Leisure activities less than 20 km / 12 miles :**

Bathing, golf, tennis, riding school, pony club, pathway, coastal/forest paths, hiking, mountain bike (path), flying (club), horse trekking, go-karting, hunting, big game hunting, acrobatics, angling

- **Supervised :**

Tennis school, riding school

- **Attractions and relaxation :**

Bar/pub, discotheque, restaurant, cinema, park and garden, leisure park, zoo/animal park, exhibition centre, historical site, museum, festivals, antiques & bric-a-brac, local craftshop, cellar and wine tasting, casino, racecourse, thalassotherapy centre, health farm, beauticians, fitness centre, Bio farm

### Surroundings

- **Locality :**

Sea/ocean 18.5mi.  
Sandy beach 18.5mi.  
Public swimming pool 6mi.  
Public tennis court 0.62mi.  
9 hole golf course 12.5mi.  
18 hole golf course 12.5mi.  
Watersports centre 25mi.  
River <165'  
Stretch of water 6mi.  
Marina 18.5mi.

- **Amenities :**

Village centre 1.25mi.  
Town centre 6mi.  
Bike/mountain bike hire 6mi.  
Scooter/motorbike hire 6mi.  
Car rental 6mi.  
Breadshop 1.25mi.  
Caterer 6mi.  
Local shops 4.5mi.  
Supermarket 6mi.  
High class retailers 18.5mi.  
Hairdressing salon 1.25mi.  
Internet cafe 4.5mi.  
Post office 4.5mi.  
Bank 4.5mi.  
Cash point 4.5mi.  
Chemist 2.5mi.  
Doctor 4.5mi.  
Nurse  
Hospital 6mi.



bedroom



large bedroom

Charming holiday letting  
Marolles - France  
"Domaine de Chaffe"

3

[Book now](#)



bathroom

### Interior

- **Receive up to :**  
from 2 to 7 person(s) (6 adults, 1 children)
- **Liveable floor area :**  
1,076 Sq.ft.
- **Interior layout :**  
6 Room(s), 3 bedroom(s), 2 bathroom, shower room, 2 WC, living room 215 Sq.ft., sitting room 215 Sq.ft., separate kitchen, dining room, tv room, reading room
- **Sleeps - bed(s) :**  
3 double bed(s), 2 king-size bed(s), 2 single bed(s), 1 divan 1 pers, 1 baby cot(s)
- **Guest facilities :**  
T.V., hi-fi system, videoplayer, DVD player, board games, book collection, film collection, cable/satelite, internet access, high speed internet access, wifi, wardrobe, cupboard, Hanging wardrobe, hair dryer, central heating, electric heating, Glazed in area, Curtains, Double glazed
- **Appliances :**  
Crockery/cuttlery, kitchen utensils, cafetiere, electric coffee maker, electric espresso coffee maker, electric kettle, toaster, juicer, food processor, meat grill, electric hobs, oven, micro-wave oven, electric chip fryer, extractor hood, refridgerator, freezer, dish washer, washing machine, clothes dryer, vacuum cleaner, iron, ironing board

### Exterior

- **Ground surface :**  
> 25 acres
- **Outside accommodation :**  
Terrace > 2,150 Sq.ft.
- **Outside setting :**  
Garden > 0.25 acre, landscaped garden > 0.25 acre, lawn > 0.25 acre, wooded park > 25 acres, woods 10 acres, kitchen garden, natural pools, river
- **Outside amenities :**  
Summer living area, BBQ, garden table(s), 8 garden seat(s), trolley on wheels, parasol, garden seated area, chaise(s) longue(s), sun recliner(s)



Countryside

### Services

- **Washing :**  
Sheets, Towels, Linen, Beach towels, Blanket(s), Quilt(s), Pillows
- **House :**  
Cleaning supplement, Cleaning on departure supplement (+£45\*), Garden/swimming pool maintenance, Snow clearance, Parking, Airport transfers supplement
- **Personnel :**  
Staff supplement, Chef(s) supplement, Chauffeur supplement, Laundry supplement, Baby sitting supplement
- **Restauration :**  
Guest table supplement, BBQ meal supplement, Locally produced meals supplement

### For your guidance

- **For your guidance**  
Children welcome  
Pets accepted  
Mobile telephone network coverage, personal transport advisable  
Water : hot/cold  
Local voltage supply : 220-240V / 50Hz  
Electricity supply : mains



Winter

Advert No. 52815

[www.ihacom.co.uk](http://www.ihacom.co.uk)



>> HOLIDAY LETTINGS

BOOK DIRECT WITH THE OWNERS

Photo album - 1



large bedroom



bedroom



bathroom

Photo album - 2



Winter



Countryside



Summer

### Location



### Location & Access

" Entre hospitality and Lisieux, at the height of Marolles, between team Horse and Ruault, take Chemin Saint Pierre. "



GPS coordinates in degrees, minutes, seconds: Latitude 49°7'48"N - Longitude 0°20'50"E (Dwelling)

#### Address

→ Domaine de Chaffe  
Cirfontaine - Route Dép 75B  
14100 Marolles

#### • Motorway (junction) A28

→ Bernay, Eure, Upper Normandy, France  
→ Distance : 8mi.  
→ Time : 10'

#### • Train station Lisieux

→ Lisieux, Calvados, Lower Normandy, France  
→ Distance : 7,5mi.  
→ Time : 10'

#### • Airport Deauville Normandie

→ Deauville, Calvados, Lower Normandy, France  
→ Distance : 22,5mi.  
→ Time : 30'

- Lisieux : (6mi.)
- Thiberville : (3mi.)
- Deauville : (19,3mi.)

### Contact

Spoken languages



Charming holiday letting  
Marolles - France  
"Domaine de Chaffe"

Availability calendar - from : september 2017

Sep	F	Sa	Su	M	Tu	W	Th	F	Sa	Su	M	Tu	W	Th	F	Sa	Su	M	Tu	W	Th	F	Sa							
2017	1	2	3	4	5	6	7	8	9	10	11	12	13	14	15	16	17	18	19	20	21	22	23	24	25	26	27	28	29	30
																			-	-	-	-	-	-	-	-	-	-	-	

Oct	Su	M	Tu	W	Th	F	Sa	Su	M	Tu	W	Th	F	Sa	Su	M	Tu	W	Th	F	Sa	Su	M	Tu	W	Th	F	Sa	Su	M	Tu
2017	1	2	3	4	5	6	7	8	9	10	11	12	13	14	15	16	17	18	19	20	21	22	23	24	25	26	27	28	29	30	31
	-	-	-	-	-	-	-	-	-	-	-	-	-	-	-	-	-	-	-	-	-	-	-	-	-	-	-	-	-	-	

Nov	W	Th	F	Sa	Su	M	Tu	W	Th	F	Sa	Su	M	Tu	W	Th	F	Sa	Su	M	Tu	W	Th	F	Sa	Su	M	Tu	W	Th
2017	1	2	3	4	5	6	7	8	9	10	11	12	13	14	15	16	17	18	19	20	21	22	23	24	25	26	27	28	29	30
	-	-	-	-	-	-	-	-	-	-	-	-	-	-	-	-	-	-	-	-	-	-	-	-	-	-	-	-	-	-

Dec	F	Sa	Su	M	Tu	W	Th	F	Sa	Su	M	Tu	W	Th	F	Sa	Su	M	Tu	W	Th	F	Sa	Su	M	Tu	W	Th	F	Sa	Su
2017	1	2	3	4	5	6	7	8	9	10	11	12	13	14	15	16	17	18	19	20	21	22	23	24	25	26	27	28	29	30	31
	-	-	-	-	-	-	-	-	-	-	-	-	-	-	-	-	-	-	-	-	-	-	-	-	-	-	-	-	-	-	-

Jan	M	Tu	W	Th	F	Sa	Su	M	Tu	W	Th	F	Sa	Su	M	Tu	W	Th	F	Sa	Su	M	Tu	W	Th	F	Sa	Su	M	Tu	W
2018	1	2	3	4	5	6	7	8	9	10	11	12	13	14	15	16	17	18	19	20	21	22	23	24	25	26	27	28	29	30	31
	-	-	-	-	-	-	-	-	-	-	-	-	-	-	-	-	-	-	-	-	-	-	-	-	-	-	-	-	-	-	-

Feb	Th	F	Sa	Su	M	Tu	W	Th	F	Sa	Su	M	Tu	W	Th	F	Sa	Su	M	Tu	W	Th	F	Sa	Su	M	Tu	W
2018	1	2	3	4	5	6	7	8	9	10	11	12	13	14	15	16	17	18	19	20	21	22	23	24	25	26	27	28
	-	-	-	-	-	-	-	-	-	-	-	-	-	-	-	-	-	-	-	-	-	-	-	-	-	-	-	-

Mar	Th	F	Sa	Su	M	Tu	W	Th	F	Sa	Su	M	Tu	W	Th	F	Sa	Su	M	Tu	W	Th	F	Sa	Su	M	Tu	W	Th	F	Sa
2018	1	2	3	4	5	6	7	8	9	10	11	12	13	14	15	16	17	18	19	20	21	22	23	24	25	26	27	28	29	30	31
	-	-	-	-	-	-	-	-	-	-	-	-	-	-	-	-	-	-	-	-	-	-	-	-	-	-	-	-	-	-	-

Apr	Su	M	Tu	W	Th	F	Sa	Su	M	Tu	W	Th	F	Sa	Su	M	Tu	W	Th	F	Sa	Su	M	Tu	W	Th	F	Sa	Su	M
2018	1	2	3	4	5	6	7	8	9	10	11	12	13	14	15	16	17	18	19	20	21	22	23	24	25	26	27	28	29	30
	-	-	-	-	-	-	-	-	-	-	-	-	-	-	-	-	-	-	-	-	-	-	-	-	-	-	-	-	-	-

May	Tu	W	Th	F	Sa	Su	M	Tu	W	Th	F	Sa	Su	M	Tu	W	Th	F	Sa	Su	M	Tu	W	Th	F	Sa	Su	M	Tu	W	Th
2018	1	2	3	4	5	6	7	8	9	10	11	12	13	14	15	16	17	18	19	20	21	22	23	24	25	26	27	28	29	30	31
	-	-	-	-	-	-	-	-	-	-	-	-	-	-	-	-	-	-	-	-	-	-	-	-	-	-	-	-	-	-	

June	F	Sa	Su	M	Tu	W	Th	F	Sa	Su	M	Tu	W	Th	F	Sa	Su	M	Tu	W	Th	F	Sa	Su	M	Tu	W	Th	F	Sa
2018	1	2	3	4	5	6	7	8	9	10	11	12	13	14	15	16	17	18	19	20	21	22	23	24	25	26	27	28	29	30
	-	-	-	-	-	-	-	-	-	-	-	-	-	-	-	-	-	-	-	-	-	-	-	-	-	-	-	-	-	-

Reserved
  Mid season
  Low season



Charming holiday letting  
Calvados - Lower Normandy  
"Domaine de Chaffe"

8

[Book now](#)

Availability calendar - from : june 2018

Jul	Su	M	Tu	W	Th	F	Sa	Su	M	Tu	W	Th	F	Sa	Su	M	Tu	W	Th	F	Sa	Su	M	Tu							
2018	1	2	3	4	5	6	7	8	9	10	11	12	13	14	15	16	17	18	19	20	21	22	23	24	25	26	27	28	29	30	31
-	-	-	-	-	-	-	-	-	-	-	-	-	-	-	-	-	-	-	-	-	-	-	-	-	-	-	-	-	-	-	

Aug	W	Th	F	Sa	Su	M	Tu	W	Th	F	Sa	Su	M	Tu	W	Th	F	Sa	Su	M	Tu	W	Th	F							
2018	1	2	3	4	5	6	7	8	9	10	11	12	13	14	15	16	17	18	19	20	21	22	23	24	25	26	27	28	29	30	31
-	-	-	-	-	-	-	-	-	-	-	-	-	-	-	-	-	-	-	-	-	-	-	-	-	-	-	-	-	-	-	



Reserved



Mid season



Low season

[Month : Next >>](#)

Rental rates - Charming Country House - from 2 to 7 Person(s)

Rates	Night	Weekend	week	2 weeks	Month
Low season	-	£269*	£609*	£851*	£1344*
Mid season	£179*	£340*	£672*	£985*	-
High season	-	-	£985*	£1792*	-
Festive specials	-	£314*	£717*	-	-
Promotional period	-	£224*	£448*	£806*	£1075*

[Book now](#)

Booking conditions

• Reservation

- Payment made upon reservation : 50% of rental sum
- Payment balance : on handing over the keys
- Deposit required : £269\*

• rentals

- Service charges included
- Day tax in addition
- Cleaning charge levy on departure : £40\*
- Anticipated supplement for :
  - animals
  - supplementary bed(s)

Accepted methods of payment

- Bank transfer (wire)
- Cheque
- Bankers draft
- PayPal
- Travellers Cheques
- Cash
- Holiday voucher

[▶ Book now](#)

[▶ Contact the owner](#)

Contact directly the property owners

[www.ihacom.co.uk](http://www.ihacom.co.uk)

Advert No.

52815

[>> Book now <<](#)

Contact

Spoken languages



\* Converted at the rate indicated : €100 = \$117.29 = £89.59

Advert No. 52815

[www.ihacom.co.uk](http://www.ihacom.co.uk)



[>> HOLIDAY LETTINGS](#)

BOOK DIRECT WITH THE OWNERS