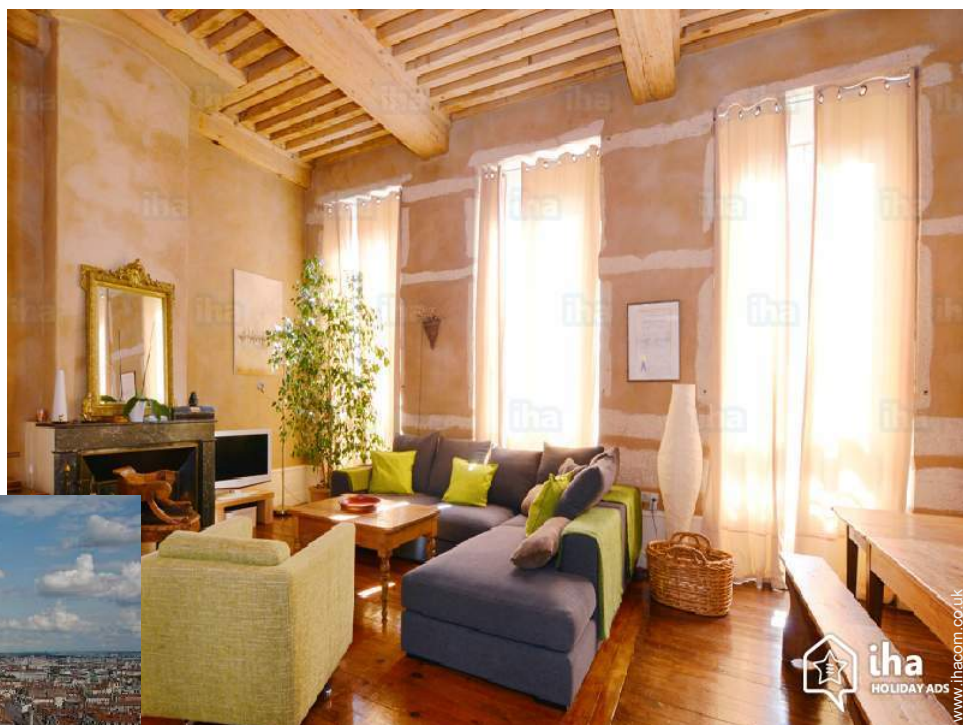


# Charming holiday letting Lyon 5th district "Vieux Lyon Fourviere"

Beautiful apartment with panoramic view on the mountain of the Alps and the city of Lyon. At the centre of the Vieux Lyon (historic district).



**Charming Apartment** 1st floor,  
separate entrance, in a(an) Restored  
block of flats 5 floors

Setting : historical, urban

Capacity : from 1 to 5 person(s)

Bedroom(s) : 2

Room(s) : 3



Meublés de Tourisme (3 stars)

Lyon 5th district - Rhône (69) - Rhône-Alpes

France

Reservation : +33 (0) 611734781 (France)

Advert No. 32776

www.ihacom.co.uk



>> HOLIDAY LETTINGS

BOOK DIRECT WITH THE OWNERS

### Charming holiday letting



Charming Apartment 1st floor, separate entrance, in a(an) Restored block of flats 5 floors

- **Ideal for all age groups, family**
- **View** : panoramic, not overlooked, dominant, mountain, town, nightlights
- **Setting** : historical, urban
- **Exposure** : East

" This apartment of 80 m<sup>2</sup> can accommodate up to 4 or 5 people. It is located in an old building end XVIII °, unopposed, with views overlooking the city of Lyon and the Alps mountain range. At the centre of the Vieux Lyon (historic district), it consists of several rooms 2 rooms, which one in mezzanine (very intimate), a dining - room 30 sqm living room, with a kitchen open to the living room, all these pieces have an old style, with French ceiling, wall stone, former Prosecutor. You have nevertheless all equip it and modern comforts: washing machine, dryer, dishwasher, microwave, Nespresso coffee machine, TV, the internet by optical fiber high speed & WIFI. "



view from the living room

### Surroundings & location



City

" You are situated within walking distance (12 minutes walk) Centre City shopping of the peninsula or you can make your shopping and errands. You are 2 minutes walk from the centre of the old city said Vieux Lyon (historic district). You will have the opportunity to visit the museums of the city, go bowling, at the rink, run along the banks of the Saône and Rhône rivers, or even ride a bike with bike ' v (bike made available with stations to bike throughout the city). "

#### Leisure

- **Leisure activities less than 20 km / 12 miles :**

Bathing, golf, squash, skate board (ramps)

#### Surroundings



view from the flat



sitting room



sitting room

### Interior

- **Receive up to :**  
from 1 to 5 person(s) (5 adults)
- **Liveable floor area :**  
860 Sq.ft.
- **Interior layout :**  
3 Room(s), 2 bedroom(s), 1 bathroom, 1 WC, living room 323 Sq.ft., sitting room, separate kitchen
- **Sleeps - bed(s) :**  
1 double bed(s), 1 king-size bed(s), 1 possible extra bed(s)
- **Guest facilities :**  
T.V., DVD player, cable/satellite, wifi, hair dryer, heated towel rail, mobile cool air fan, central heating, Double glazed, digipad entry system
- **Appliances :**  
Crockery/cutlery, kitchen utensils, cafetiere, electric coffee maker, electric espresso coffee maker, toaster, juicer, food processor, crepe maker, electric raclette set, electric hobs, oven, extractor hood, refrigerator, dish washer, washing machine, clothes dryer, vacuum cleaner, iron, ironing board

### Exterior

- **Outside accommodation :**  
Terrace 110 Sq.ft.
- **Outside amenities :**  
Garden table(s)



master bedroom

### Services

- **Washing :**  
Sheets, Towels, Linen, Quilt(s), Pillows
- **House :**  
Cleaning on departure

### For your guidance

- **For your guidance**  
Children welcome  
Non smoking rental



kitchen

Photo album - 1



view from the living room



sitting room

view from the flat



sitting room

kitchen

Photo album - 2



master bedroom



bedroom



living room



living room



easterly view



bathroom



terrace

## Route map



## Location & Access

" Accessible by car, by public transport (metro, bus, funicular railway), on foot. The situation of the apartment is pleasant to visit various places in the city, thanks to a proximity to the metro and funicular. "



GPS coordinates in degrees, minutes, seconds: Latitude 45° 45'34"N - Longitude 4° 49'27"E ([Dwelling](#))

### Address

→ Montée du chemin neuf  
69005 Lyon 5th district

#### • [Airport Lyon St Exupery](#)

→ Lyon, Rhône, Rhône-Alpes, France  
→ Distance : 7,5mi.  
→ Time : 40'

#### • [Train station Lyon Part Dieu](#)

→ Lyon, Rhône, Rhône-Alpes, France  
→ Distance : 1.85mi.  
→ Time : 20'

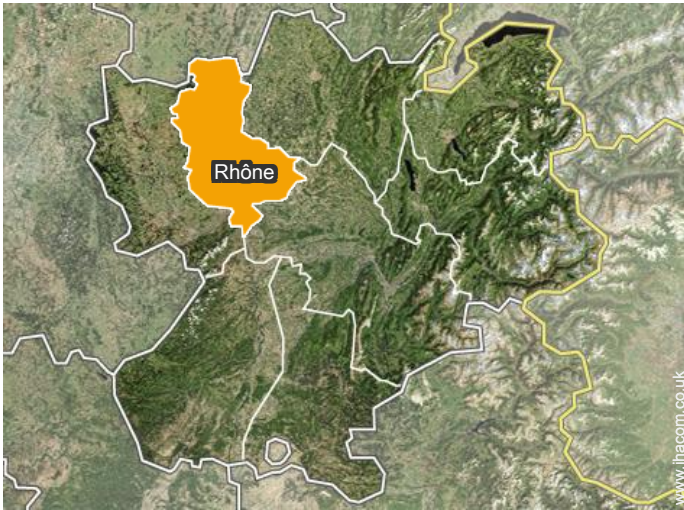
- Geneva : (87mi.)
- Paris : (>186mi.)
- Marseille : (>186mi.)

## Contact

Spoken languages



Location



Charming holiday letting  
Rhône - Rhône-Alpes  
"Vieux Lyon Fourviere"

8

[Book now](#)

Rental rates - Charming Apartment - from 1 to 5 Person(s)

Rates	Night	Weekend	week	2 weeks	Month
<input type="checkbox"/> Mid season	-	-	£640*	£1210*	£2490*

[Book now](#)



view from the living room

sitting room

Accepted methods of payment

- International Money Order
- Bank transfer (wire)
- Cash

[▶ Book now](#)

[▶ Contact the owner](#)

Contact directly the property owners

[www.ihacom.co.uk](http://www.ihacom.co.uk)

Advert No.

32776

>> [Book now](#) <<

Contact

Spoken languages



\* Converted at the rate indicated : €100 = \$123.46 = £88.94

Advert No. 32776

[www.ihacom.co.uk](http://www.ihacom.co.uk)

