

# Charming holiday letting La Joue du Loup "Les Hauts De La Lauziere"

Beautiful chalet in solid wood, the bear's den



**Charming Wooden Chalet**, detached,  
1 floor, separate entrance, in a(an) Private  
estate

Setting : mountainy, bucolic

Capacity : from 1 to 8 person(s)

Bedroom(s) : 3

Room(s) : 4



Meublés de Tourisme (3 stars)

La Joue du Loup - Upper Alpes (05) - Provence-Alpes-Côte d'Azur (French Riviera)  
France

Reservation : +33 (0) 4 90 76 05 00 (France)

Advert No. 15497

www.ihacom.co.uk



### Charming holiday letting



Charming Wooden Chalet, detached, 1 floor, separate entrance, in a(an) Private estate

- **Ideal for all age groups, honeymoon**
- **View :** unobscured, not overlooked, mountain
- **Setting :** mountainy, bucolic
- **Exposure :** South-east

"Cocooning, North great atmosphere inside. The most complete, warm scenery. With chimney terrace, 2 bathrooms and 2 Toilets. Parking spaces, right in front of the cottage. Ideally located two minutes has foot the slopes and the centre of the village. Private residence, heated and covered swimming pool. What to spend the holiday... "

### Assets

- **Swimming pool :**

Shared swimming pool, rectangular, heated, inside, covered, illuminated, step ladder, child secure (open from '30 june' till '30 august')

- **Parking :**

Parking uncovered : 1 reserved bay.

- **Advantages :**

Ski locker, sauna

- **baby equipment :**

Baby changer

### Surroundings & location



Mountain



Ski

" Many activities both in summer as in winter. Hooked branches, VTT, walk in dog sleds riding cinema restaurants boutique places cultural skiing Snowshoeing discovered with guides of the mountain fauna and flora etc... "

#### Leisure

- **Leisure activities less than 20 km / 12 miles :**

Alpine skiing, cross-country skiing, luge (run), dogsledding, riding school, pathway, hiking, climbing, kite flying, flying (club), horse trekking, acrobatic

- **Supervised :**

Ski school, child's ski area

#### Surroundings

- **Locality :**

Ski slopes 660'  
Heated swimming pool 660'  
River 3mi.  
Forest 990'  
Mountain range 660'



Charming Wooden Chalet



dining room



shared swimming pool

### Exterior

- **Outside accommodation :**  
Terrace 110 Sq.ft.
- **Outside amenities :**  
Garden table(s)



bedroom

### Interior

- **Receive up to :**  
from 1 to 8 person(s) (6 adults, 2 children)
- **Liveable floor area :**  
700 Sq.ft.
- **Interior layout :**  
4 Room(s), 3 bedroom(s), 1 bathroom, 1 shower room, 2 WC, living room 270 Sq.ft., sitting room 160 Sq.ft., american style kitchen, dining room, cosy nook, tv room
- **Sleeps - bed(s) :**  
2 double bed(s), 2 king-size bed(s), 1 sofa bed(s) 2 pers, 2 single bed(s), 1 baby cot(s)
- **Guest facilities :**  
Fireplace, T.V., board games, book collection, film collection, t.v points, Hanging wardrobe, electric heating, wood-burning stove, Glazed in area, Curtains, Double glazed, fire alarm
- **Appliances :**  
Crockery/cutlery, kitchen utensils, cafetiere, electric coffee maker, electric espresso coffee maker, electric kettle, toaster, juicer, electric raclette set, fondue set, electric hobs, oven, micro-wave oven, extractor hood, refridgerator, dish washer, washing machine, vacuum cleaner

### Services

- **Washing :**  
Sheets, Linen, Blanket(s), Quilt(s), Pillows
- **House :**  
Cleaning, Cleaning on departure supplement (+£89\*)

### For your guidance

- **For your guidance**  
Children welcome  
Pets accepted under certain conditions (ask the owner)  
Non smoking rental, mobile telephone network coverage, personal transport advisable  
Water : hot/cold
- **Handicapped people welcome**  
Wheelchair access  
Fitted out for the disabled : mobility



bedroom



Photo album - 1



view from the house



dining room



Charming Wooden Chalet



shared swimming pool



bedroom



bedroom

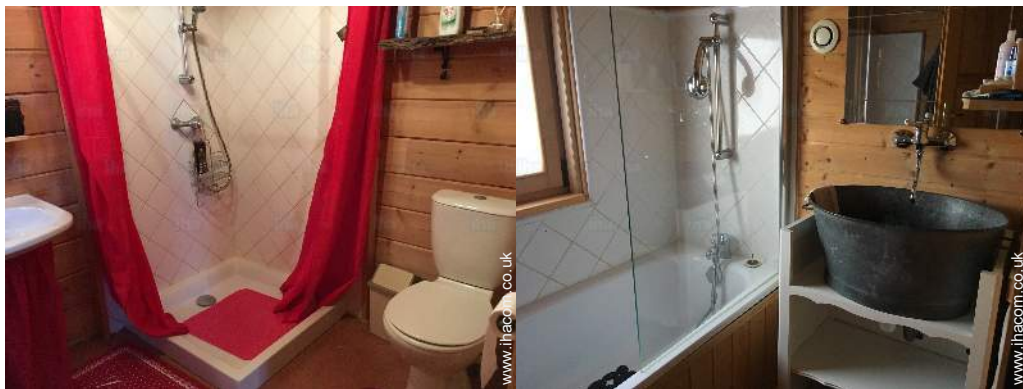


Photo album - 2



interior

bedroom



shower room

bathroom



view from the dining-room



[Favourite photo gallery - 1](#)



Jan 2018



Jan 2018

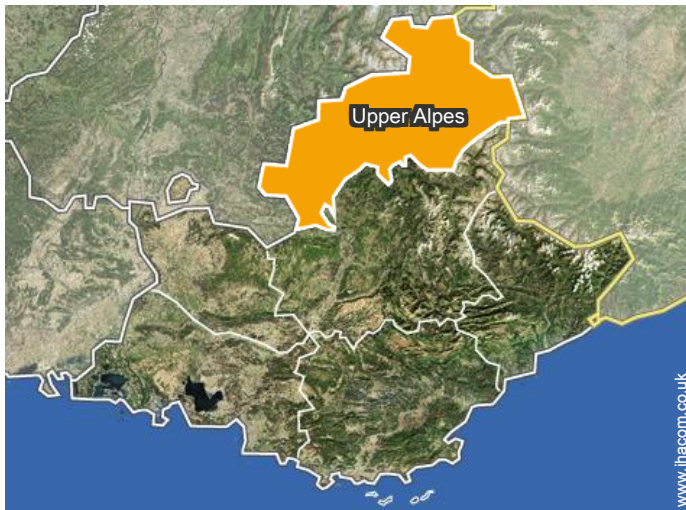


Jan 2018



Jan 2018

## Location



## Location & Access

" 40 km from Gap and 20 km of Veynes les Alpes. The cheek of the Wolf is a family resort, or one has privileged the timber constructions. Very nice cottages adorn this lovely resort "



GPS coordinates in degrees, minutes, seconds: Latitude 44°41'15"N - Longitude 5°53'29"E (Dwelling)

### Address

→ Residence Les Hauts De La Lauziere  
05250 La Joue du Loup

- Saint-Etienne-en-Dévoluy : (3mi.)
- Veynes : (11,8mi.)

### • Train station Gap

→ Gap, Upper Alpes, Provence-Alpes-Côte d'Azur (French Riviera), France  
→ Distance : 13mi.  
→ Time : 45'

### • Motorway (junction) GAP

→ Gap, Upper Alpes, Provence-Alpes-Côte d'Azur (French Riviera), France  
→ Distance : 13mi.  
→ Time : 45'

- Gap : (18.5mi.)

## Contact

Spoken languages





Charming holiday letting  
Upper Alpes - Provence-Alpes-Côte d'Azur (French Riviera)  
"Les Hauts De La Lauziere"

[Book now](#)

Availability calendar - from : march 2018

Mar	Th	F	Sa	Su	M	Tu	W	Th	F	Sa	Su	M	Tu	W	Th	F	Sa	Su	M	Tu	W	Th	F	Sa	Su	M	Tu	W	Th	F	Sa
2018	1	2	3	4	5	6	7	8	9	10	11	12	13	14	15	16	17	18	19	20	21	22	23	24	25	26	27	28	29	30	31

Apr	Su	M	Tu	W	Th	F	Sa	Su	M	Tu	W	Th	F	Sa	Su	M	Tu	W	Th	F	Sa	Su	M							
2018	1	2	3	4	5	6	7	8	9	10	11	12	13	14	15	16	17	18	19	20	21	22	23	24	25	26	27	28	29	30
	-	-	-	-	-	-	-	-	-	-	-	-	-	-	-	-	-	-	-	-	-	-	-	-	-	-	-	-	-	-

May	Tu	W	Th	F	Sa	Su	M	Tu	W	Th	F	Sa	Su	M	Tu	W	Th	F	Sa	Su	M	Tu	W	Th	F	Sa	Su	M	Tu	W	Th
2018	1	2	3	4	5	6	7	8	9	10	11	12	13	14	15	16	17	18	19	20	21	22	23	24	25	26	27	28	29	30	31
	-	-	-	-	-	-	-	-	-	-	-	-	-	-	-	-	-	-	-	-	-	-	-	-	-	-	-	-	-	-	-

June	F	Sa	Su	M	Tu	W	Th	F	Sa	Su	M	Tu	W	Th	F	Sa	Su	M	Tu	W	Th	F	Sa							
2018	1	2	3	4	5	6	7	8	9	10	11	12	13	14	15	16	17	18	19	20	21	22	23	24	25	26	27	28	29	30
	-	-	-	-	-	-	-	-	-	-	-	-	-	-	-	-	-	-	-	-	-	-	-	-	-	-	-	-	-	-

Jul	Su	M	Tu	W	Th	F	Sa	Su	M	Tu	W	Th	F	Sa	Su	M	Tu	W	Th	F	Sa	Su	M	Tu	W	Th	F	Sa	Su	M	Tu
2018	1	2	3	4	5	6	7	8	9	10	11	12	13	14	15	16	17	18	19	20	21	22	23	24	25	26	27	28	29	30	31
	-	-	-	-	-	-	-	-	-	-	-	-	-	-	-	-	-	-	-	-	-	-	-	-	-	-	-	-	-	-	-

Aug	W	Th	F	Sa	Su	M	Tu	W	Th	F	Sa	Su	M	Tu	W	Th	F	Sa	Su	M	Tu	W	Th	F	Sa	Su	M	Tu	W	Th	F
2018	1	2	3	4	5	6	7	8	9	10	11	12	13	14	15	16	17	18	19	20	21	22	23	24	25	26	27	28	29	30	31
	-	-	-	-	-	-	-	-	-	-	-	-	-	-	-	-	-	-	-	-	-	-	-	-	-	-	-	-	-	-	-

Sep	Sa	Su	M	Tu	W	Th	F	Sa	Su	M	Tu	W	Th	F	Sa	Su	M	Tu	W	Th	F	Sa	Su							
2018	1	2	3	4	5	6	7	8	9	10	11	12	13	14	15	16	17	18	19	20	21	22	23	24	25	26	27	28	29	30
	-	-	-	-	-	-	-	-	-	-	-	-	-	-	-	-	-	-	-	-	-	-	-	-	-	-	-	-	-	-

Oct	M	Tu	W	Th	F	Sa	Su	M	Tu	W	Th	F	Sa	Su	M	Tu	W	Th	F	Sa	Su	M	Tu	W	Th	F	Sa	Su	M	Tu	W
2018	1	2	3	4	5	6	7	8	9	10	11	12	13	14	15	16	17	18	19	20	21	22	23	24	25	26	27	28	29	30	31
	-	-	-	-	-	-	-	-	-	-	-	-	-	-	-	-	-	-	-	-	-	-	-	-	-	-	-	-	-	-	-

Nov	Th	F	Sa	Su	M	Tu	W	Th	F	Sa	Su	M	Tu	W	Th	F	Sa	Su	M	Tu	W	Th	F	Sa	Su	M	Tu	W	Th	F
2018	1	2	3	4	5	6	7	8	9	10	11	12	13	14	15	16	17	18	19	20	21	22	23	24	25	26	27	28	29	30
	-	-	-	-	-	-	-	-	-	-	-	-	-	-	-	-	-	-	-	-	-	-	-	-	-	-	-	-	-	-

Dec	Sa	Su	M	Tu	W	Th	F	Sa	Su	M	Tu	W	Th	F	Sa	Su	M	Tu	W	Th	F	Sa	Su	M							
2018	1	2	3	4	5	6	7	8	9	10	11	12	13	14	15	16	17	18	19	20	21	22	23	24	25	26	27	28	29	30	31
	-	-	-	-	-	-	-	-	-	-	-	-	-	-	-	-	-	-	-	-	-	-	-	-	-	-	-	-	-	-	

 Reserved





Charming holiday letting  
La Joue du Loup - France  
"Les Hauts De La Lauziere"

9

[Book now](#)

Availability calendar - from : december 2018





Jan	Tu	W	Th	F	Sa	Su	M	Tu	W	Th	F	Sa	Su	M	Tu	W	Th	F	Sa	Su	M	Tu	W	Th							
2019	1	2	3	4	5	6	7	8	9	10	11	12	13	14	15	16	17	18	19	20	21	22	23	24	25	26	27	28	29	30	31
-	-	-	-	-	-	-	-	-	-	-	-	-	-	-	-	-	-	-	-	-	-	-	-	-	-	-	-	-	-	-	

Feb	F	Sa	Su	M	Tu	W	Th	F	Sa	Su	M	Tu	W	Th	F	Sa	Su	M	Tu	W	Th								
2019	1	2	3	4	5	6	7	8	9	10	11	12	13	14	15	16	17	18	19	20	21	22	23	24	25	26	27	28	
-	-	-	-	-	-	-	-	-	-	-	-	-	-	-	-	-	-	-	-	-	-	-	-	-	-	-	-	-	-

Reserved

[Month : Next >>](#)

Rental rates - Charming Wooden Chalet - from 1 to 8 Person(s)

Rates	Night	Weekend	week	2 weeks	Month
 Low season	-	£267*	£445*	-	-
 Mid season	-	£267*	£800* (Saturday)	-	-
 High season	-	-	£1823* (Saturday)	-	-
 Promotional period	-	-	£400*	-	-

(Check-in day)

[Book now](#)

Booking conditions

• Reservation

- Payment made upon reservation : 30% of rental sum
- Payment balance : 2 weeks before the stay
- Deposit required : £889\*

• rentals

- Cleaning charge levy on departure : £89\*

Accepted methods of payment

- Bank transfer (wire) • Cheque • Cash

[▶ Book now](#)

[▶ Contact the owner](#)

Contact directly the property owners

[www.ihacom.co.uk](http://www.ihacom.co.uk)

Advert No.

15497

[>> Book now <<](#)

Contact

Spoken languages



\* Converted at the rate indicated : €100 = \$123.46 = £88.94

Advert No. 15497

[www.ihacom.co.uk](http://www.ihacom.co.uk)



[>> HOLIDAY LETTINGS](#)

BOOK DIRECT WITH THE OWNERS