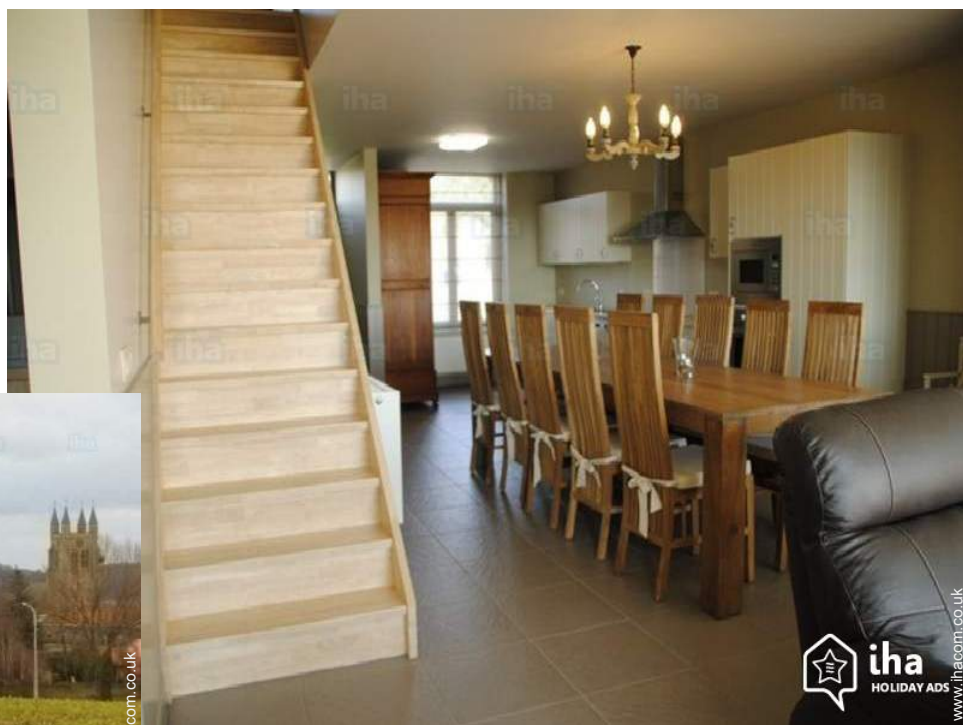


Charming holiday letting Heuvelland "Zicht Magnifiek"

The House rests on the edge of Loker, a warm village in the hill country. You will recognize our municipality immediately to his vast panoramas and hills as the Kemmelberg, Rodeberg, Zwarteberg, Scherpenberg, Sulphur mountain, ...



Meublés de Tourisme (5 stars)

Charming Country House, detached,
1 floor, separate entrance

Setting : tranquil, bucolic

Capacity : from 1 to 12 person(s)

Bedroom(s) : 5

Room(s) : 5

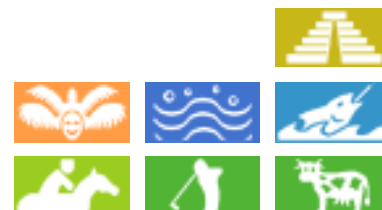
Heuvelland - West Flanders - Flanders

Belgium

Reservation : +32 (0) 57 44 85 63 (Belgium)

Advert No. 74247

www.ihacom.co.uk



>> HOLIDAY LETTINGS

BOOK DIRECT WITH THE OWNERS

Charming holiday letting



Charming Country House, detached, 1 floor, separate entrance

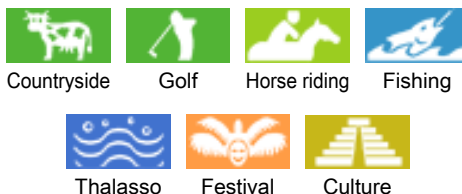
- **Ideal for all age groups, family groups**
- **View :** panoramic, mountain, country side, garden/park, forest, village
- **Setting :** tranquil, bucolic
- **Exposure :** South-east

" The House has all the comfort! A closed garden, roof and ground floor terrace with appropriate facilities. During the summer months, enjoy a refreshing dip in the pool or relax in the wellness area. Prefer something more active? Then there are bikes for you ready (stadsfies or music whether or not electric). "

Assets

- **Swimming pool :**
Private swimming-pool, circular (diameter 16'), heated, step ladder (open from '01 june' till '15 september')
- **Parking :**
Parking uncovered : 3 reserved bay.
- **Advantages :**
Sauna, jacuzzi, 10 bike(s)
- **baby equipment :**
Baby chair, baby changer, baby potty, playpen

Surroundings & location



" Countless walking and cycling routes in the vicinity will guide you to cosy restaurants and pubs. There you can taste the delicious regional cuisine and beers. Our region has a rich history of war. Quite a few decisive battles of the first world war were fought in our Court. A stone's throw from our vakantewoning you will find the cities Poperinge (oa. Talbot House, hop Museum) and Ypres (oa. Flanders Field museum and the last post). Also a trip to French Flanders, the other side of the frontier the! Would you get away from the hustle and bustle, to a place where you can put aside the hectic, everyday life, where the peace, quiet and natural asset? Then we have everything to charm you! "

Leisure

- **Leisure activities less than 20 km / 12 miles :**

Bathing, squash, riding school, pony club, coastal/forest paths, hiking, mountain bike (path), horse-drawn carriage, horse trekking, donkey rides, mini-golf, go-karting, ten-pin bowling, basketball, volleyball, fishing, angling, pétanque pitch

- **Supervised :**
Riding school

Surroundings

- **Locality :**
Heated swimming pool 6mi.
Sea/ocean 31mi.
Sandy beach 31mi.
Public swimming pool 6mi.
9 hole golf course 0.3mi.
Forest 0.3mi.



Autumn



panoramic view

Charming holiday letting Heuvelland - Belgium "Zicht Magnifiek"

3

[Book now](#)



view of the village

Interior

- **Receive up to :**
from 1 to 12 person(s) (10 adults, 2 children)
- **Liveable floor area :**
1,600 Sq.ft.
- **Interior layout :**
5 Room(s), 5 bedroom(s), sleeping area, 2 shower room, 2 WC, living room 750 Sq.ft., sitting room 750 Sq.ft., american style kitchen, dining room, tv room, reading room, games room
- **Sleeps - bed(s) :**
5 double bed(s), 2 baby cot(s)
- **Guest facilities :**
T.V., board games, book collection, computer, cable/satellite, internet access, wifi, cupboard, hair dryer, heated towel rail, fly screens, central heating, Skylights, Blinds, Double glazed, Rolling shutters, electric shutters, fire alarm
- **Appliances :**
Crockery/cuttlery, kitchen utensils, cafetiere, electric coffee maker, electric kettle, toaster, juicer, crepe maker, meat grill, electric cooker, oven, micro-wave oven, electric chip fryer, extractor hood, refrigerator, freezer, ice maker, dish washer, washing machine, vacuum cleaner, iron, ironing board

Exterior

- **Ground surface :**
4,300 Sq.ft.
- **Outside accommodation :**
Terrace 430 Sq.ft., roof terrace 430 Sq.ft.
- **Outside setting :**
Enclosed grounds 4,300 Sq.ft., garden 2,150 Sq.ft., lawn 2,150 Sq.ft.
- **Outside amenities :**
BBQ, garden table(s), 10 garden seat(s), parasol, 2 chaise(s) longue(s)



sleeping nook

Services

- **Washing :**
Sheets supplement (+£6*), Quilt(s), Pillows
- **House :**
Cleaning on departure, Parking

For your guidance

- **For your guidance**
Children welcome
Pets accepted
Non smoking rental, personal transport advisable
Water : hot/cold
Local voltage supply : 220-240V / 50Hz
Electricity supply : mains
- **Handicapped people welcome**
Wheelchair access



façade

Advert No. 74247

www.ihacom.co.uk



[>> HOLIDAY LETTINGS](#)

[BOOK DIRECT WITH THE OWNERS](#)

Photo album - 1



panoramic view



Autumn



view of the village



façade



sleeping nook

Photo album - 2



baby equipment



roof terrace



view from the bedroom



view of the village centre



leisure equipment



Interior layout and facilities



terrace



view from the house

Photo album - 3



kitchen

baby chair



T.V.

shower room



WC

view from the bedroom



enclosed grounds

view from the bedroom

[Favourite photo gallery - 1](#)



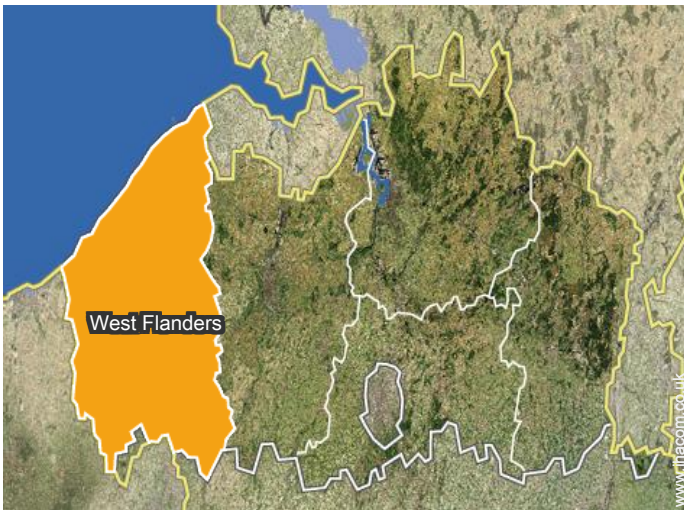
[Favourite photo gallery - 2](#)



Aug 2018



Location



Location & Access

" The property is located in a village with less than 600 residents ... The rest here is really to be found! With us you're welcome for a weekend, midweek, week or more "



GPS coordinates in degrees, minutes, seconds: Latitude 50°47'10"N - Longitude 2°46'17"E (Dwelling)

Address

→ Dikkebusstraat 97
8958 Heuvelland

• Coach station Ieper

→ Ypres, West Flanders, Flanders, Belgium
→ Distance : 6mi.

• Motorway (junction) A19

→ Ypres, West Flanders, Flanders, Belgium
→ Distance : 6mi.

• Train station Ypres

→ Ypres, West Flanders, Flanders, Belgium
→ Distance : 6mi.

• Ypres : (6mi.)

- Poperinge : (6mi.)
- Kortrijk : (28mi.)

Contact

Spoken languages



Charming holiday letting Flanders - Heuvelland "Zicht Magnifiek"

Availability calendar - from : december 2018

| Dec | Sa | Su | M | Tu | W | Th | F | Sa | Su | M | Tu | W | Th | F | Sa | Su | M | Tu | W | Th | F | Sa | Su | M | | | | | | | |
|------|----|----|---|----|---|----|---|----|----|----|----|----|----|----|----|----|----|----|----|----|----|----|----|----|----|----|----|----|----|----|----|
| 2018 | 1 | 2 | 3 | 4 | 5 | 6 | 7 | 8 | 9 | 10 | 11 | 12 | 13 | 14 | 15 | 16 | 17 | 18 | 19 | 20 | 21 | 22 | 23 | 24 | 25 | 26 | 27 | 28 | 29 | 30 | 31 |
| | | | | | | | | | | | | | | | | | | | | | | | | | | | | | | | |

| Jan | Tu | W | Th | F | Sa | Su | M | Tu | W | Th | F | Sa | Su | M | Tu | W | Th | F | Sa | Su | M | Tu | W | Th | F | Sa | Su | M | Tu | W | Th | |
|------|----|---|----|---|----|----|---|----|---|----|----|----|----|----|----|----|----|----|----|----|----|----|----|----|----|----|----|----|----|----|----|--|
| 2019 | 1 | 2 | 3 | 4 | 5 | 6 | 7 | 8 | 9 | 10 | 11 | 12 | 13 | 14 | 15 | 16 | 17 | 18 | 19 | 20 | 21 | 22 | 23 | 24 | 25 | 26 | 27 | 28 | 29 | 30 | 31 | |
| | | | | | | | | | | | | | | | | | | | | | | | | | | | | | | | | |

| Feb | F | Sa | Su | M | Tu | W | Th | F | Sa | Su | M | Tu | W | Th | F | Sa | Su | M | Tu | W | Th | | | | | | | | | | |
|------|---|----|----|---|----|---|----|---|----|----|----|----|----|----|----|----|----|----|----|----|----|----|----|----|----|----|----|----|--|--|--|
| 2019 | 1 | 2 | 3 | 4 | 5 | 6 | 7 | 8 | 9 | 10 | 11 | 12 | 13 | 14 | 15 | 16 | 17 | 18 | 19 | 20 | 21 | 22 | 23 | 24 | 25 | 26 | 27 | 28 | | | |
| | | | | | | | | | | | | | | | | | | | | | | | | | | | | | | | |

| Mar | F | Sa | Su | M | Tu | W | Th | F | Sa | Su | M | Tu | W | Th | F | Sa | Su | M | Tu | W | Th | F | Sa | Su | | | | | | | |
|------|---|----|----|---|----|---|----|---|----|----|----|----|----|----|----|----|----|----|----|----|----|----|----|----|----|----|----|----|----|----|----|
| 2019 | 1 | 2 | 3 | 4 | 5 | 6 | 7 | 8 | 9 | 10 | 11 | 12 | 13 | 14 | 15 | 16 | 17 | 18 | 19 | 20 | 21 | 22 | 23 | 24 | 25 | 26 | 27 | 28 | 29 | 30 | 31 |
| | | | | | | | | | | | | | | | | | | | | | | | | | | | | | | | |

| Apr | M | Tu | W | Th | F | Sa | Su | M | Tu | W | Th | F | Sa | Su | M | Tu | W | Th | F | Sa | Su | M | Tu | W | Th | F | Sa | Su | M | Tu | |
|------|---|----|---|----|---|----|----|---|----|----|----|----|----|----|----|----|----|----|----|----|----|----|----|----|----|----|----|----|----|----|--|
| 2019 | 1 | 2 | 3 | 4 | 5 | 6 | 7 | 8 | 9 | 10 | 11 | 12 | 13 | 14 | 15 | 16 | 17 | 18 | 19 | 20 | 21 | 22 | 23 | 24 | 25 | 26 | 27 | 28 | 29 | 30 | |
| | | | | | | | | | | | | | | | | | | | | | | | | | | | | | | | |

| May | W | Th | F | Sa | Su | M | Tu | W | Th | F | Sa | Su | M | Tu | W | Th | F | Sa | Su | M | Tu | W | Th | F | Sa | Su | M | Tu | W | Th | F | |
|------|---|----|---|----|----|---|----|---|----|----|----|----|----|----|----|----|----|----|----|----|----|----|----|----|----|----|----|----|----|----|----|--|
| 2019 | 1 | 2 | 3 | 4 | 5 | 6 | 7 | 8 | 9 | 10 | 11 | 12 | 13 | 14 | 15 | 16 | 17 | 18 | 19 | 20 | 21 | 22 | 23 | 24 | 25 | 26 | 27 | 28 | 29 | 30 | 31 | |
| | | | | | | | | | | | | | | | | | | | | | | | | | | | | | | | | |

| June | Sa | Su | M | Tu | W | Th | F | Sa | Su | M | Tu | W | Th | F | Sa | Su | M | Tu | W | Th | F | Sa | Su | | | | | | | | |
|------|----|----|---|----|---|----|---|----|----|----|----|----|----|----|----|----|----|----|----|----|----|----|----|----|----|----|----|----|----|----|--|
| 2019 | 1 | 2 | 3 | 4 | 5 | 6 | 7 | 8 | 9 | 10 | 11 | 12 | 13 | 14 | 15 | 16 | 17 | 18 | 19 | 20 | 21 | 22 | 23 | 24 | 25 | 26 | 27 | 28 | 29 | 30 | |
| | | | | | | | | | | | | | | | | | | | | | | | | | | | | | | | |

| Jul | M | Tu | W | Th | F | Sa | Su | M | Tu | W | Th | F | Sa | Su | M | Tu | W | Th | F | Sa | Su | M | Tu | W | Th | F | Sa | Su | M | Tu | W | |
|------|---|----|---|----|---|----|----|---|----|----|----|----|----|----|----|----|----|----|----|----|----|----|----|----|----|----|----|----|----|----|----|--|
| 2019 | 1 | 2 | 3 | 4 | 5 | 6 | 7 | 8 | 9 | 10 | 11 | 12 | 13 | 14 | 15 | 16 | 17 | 18 | 19 | 20 | 21 | 22 | 23 | 24 | 25 | 26 | 27 | 28 | 29 | 30 | 31 | |
| | | | | | | | | | | | | | | | | | | | | | | | | | | | | | | | | |

| Aug | Th | F | Sa | Su | M | Tu | W | Th | F | Sa | Su | M | Tu | W | Th | F | Sa | Su | M | Tu | W | Th | F | Sa | Su | M | Tu | W | Th | F | Sa | |
|------|----|---|----|----|---|----|---|----|---|----|----|----|----|----|----|----|----|----|----|----|----|----|----|----|----|----|----|----|----|----|----|--|
| 2019 | 1 | 2 | 3 | 4 | 5 | 6 | 7 | 8 | 9 | 10 | 11 | 12 | 13 | 14 | 15 | 16 | 17 | 18 | 19 | 20 | 21 | 22 | 23 | 24 | 25 | 26 | 27 | 28 | 29 | 30 | 31 | |
| | | | | | | | | | | | | | | | | | | | | | | | | | | | | | | | | |

| Sep | Su | M | Tu | W | Th | F | Sa | Su | M | Tu | W | Th | F | Sa | Su | M | Tu | W | Th | F | Sa | Su | M | | | | | | | | |
|------|----|---|----|---|----|---|----|----|---|----|----|----|----|----|----|----|----|----|----|----|----|----|----|----|----|----|----|----|----|----|--|
| 2019 | 1 | 2 | 3 | 4 | 5 | 6 | 7 | 8 | 9 | 10 | 11 | 12 | 13 | 14 | 15 | 16 | 17 | 18 | 19 | 20 | 21 | 22 | 23 | 24 | 25 | 26 | 27 | 28 | 29 | 30 | |
| | | | | | | | | | | | | | | | | | | | | | | | | | | | | | | | |

 Reserved



Charming holiday letting
West Flanders - Heuvelland
"Zicht Magnifiek"

11

[Book now](#)

Availability calendar - from : september 2019

| Oct | Tu | W | Th | F | Sa | Su | M | Tu | W | Th | F | Sa | Su | M | Tu | W | Th | F | Sa | Su | M | Tu | W | Th | | | | | | | |
|------|----|---|----|---|----|----|---|----|---|----|----|----|----|----|----|----|----|----|----|----|----|----|----|----|----|----|----|----|----|----|----|
| 2019 | 1 | 2 | 3 | 4 | 5 | 6 | 7 | 8 | 9 | 10 | 11 | 12 | 13 | 14 | 15 | 16 | 17 | 18 | 19 | 20 | 21 | 22 | 23 | 24 | 25 | 26 | 27 | 28 | 29 | 30 | 31 |
| | - | - | - | - | - | - | - | - | - | - | - | - | - | - | - | - | - | - | - | - | - | - | - | - | - | - | - | - | - | - | |

| Nov | F | Sa | Su | M | Tu | W | Th | F | Sa | Su | M | Tu | W | Th | F | Sa | Su | M | Tu | W | Th | F | Sa | | | | | | | |
|------|---|----|----|---|----|---|----|---|----|----|----|----|----|----|----|----|----|----|----|----|----|----|----|----|----|----|----|----|----|----|
| 2019 | 1 | 2 | 3 | 4 | 5 | 6 | 7 | 8 | 9 | 10 | 11 | 12 | 13 | 14 | 15 | 16 | 17 | 18 | 19 | 20 | 21 | 22 | 23 | 24 | 25 | 26 | 27 | 28 | 29 | 30 |
| | - | - | - | - | - | - | - | - | - | - | - | - | - | - | - | - | - | - | - | - | - | - | - | - | - | - | - | - | - | |

Reserved

[Month : Next >>](#)

Rental rates - Charming Country House - from 1 to 12 Person(s)

| Rates | Night | Weekend | week | 2 weeks | Month |
|--------------------------------------|-------|---------|-------|---------|-------|
| <input type="checkbox"/> Low season | - | £352* | £530* | - | - |
| <input type="checkbox"/> Mid season | - | £352* | £530* | - | - |
| <input type="checkbox"/> High season | - | £352* | £530* | - | - |

[Book now](#)

Booking conditions

• Reservation

- Payment made upon reservation : 50% of rental sum
- Payment balance : 1 week before the stay
- Deposit required

• rentals

- Service charges included
- Day tax included
- Cleaning charge on departure included
- Anticipated supplement for :
 - baby
 - supplementary bed(s)
 - sunbed

Accepted methods of payment

- Bank transfer (wire) • Cheque

[▶ Book now](#)

[▶ Contact the owner](#)

Contact directly the property owners

www.ihacom.co.uk

Advert No.

74247

>> [Book now](#) <<

Contact

Spoken languages



* Converted at the rate indicated : €100 = \$116.85 = £89

Advert No. 74247

www.ihacom.co.uk

