

Charming holiday letting Courchevel 1850 "Chalet le Trappeur"

Apartment (8 people) built by pioneers in 1953. Completely renovated in 2007, located on the heights of Courchevel 1850 at the one end deadlock with absolute calm.



Charming Mountain Chalet, detached, 2 floors, separate entrance, in a(an) Private property

Setting : luxurious, mountainy

Capacity : from 1 to 8 person(s)

Bedroom(s) : 2

Room(s) : 3

Courchevel 1850 - Savoy (73) - Rhône-Alpes

France

Reservation : +33 (0) 563410179 (France)

Advert No. 60087

www.ihacom.co.uk



>> HOLIDAY LETTINGS

BOOK DIRECT WITH THE OWNERS

Charming holiday letting



Charming Mountain Chalet, detached, 2 floors, separate entrance, in a(an) Private property

- **Ideal for family groups**
- **View :** unobscured, mountain, garden/park, forest, fantastic sunset
- **Setting :** luxurious, mountainy
- **Exposure :** West

" The Chalet is located at the foot of the slopes and is the ideal place for families or groups of friends. You will enjoy including its friendly lounge and a beautiful fireplace. Relaxation guaranteed after skiing through a steam room (3 persons) with chromo-therapy (this therapy uses colors to stimulate the body). "

Assets

- **Parking :**
Parking uncovered : 1 reserved bay.
- **Advantages :**
Ski locker, steam bath



Charming Mountain Chalet

Surroundings & location



Mountain



Ski

" The Courchevel Valley ski area consists of 528 hectares of mountain entirely reserved for the practice of all types of snow. 150 kilometres of ski slopes Alpine served by 62 lifts, that's what make you happy. If you are beginner, 'ZEN' areas and fun you are reserved to ski safely. 27 green runs and 44 Blue will help you tame you. For confirmed fans, 38 runs red and 10 black await you to test your technique and your abilities. No matter your level, Courchevel will offer you your itinerary to spend unforgettable moments. "

Leisure

- **Leisure activities less than 20 km / 12 miles :**
Alpine skiing, cross-country skiing, off-piste skiing, ski-trekking, Télémart skiing, heliski, snowboarding, luge (run), ice-skating, hiking, climbing, parachuting, paragliding
- **Supervised :**
Ski school, child's ski area
- **Attractions and relaxation :**
Bar/pub, discotheque, restaurant, cinema, art gallery, historical site, festivals, steam baths, health farm

Surroundings

- **Locality :**
Ski slopes <165'
Ski lifts <165'
Ice skating rink 990'
18 hole golf course 0.62mi.
Forest 990'
Mountain range <165'
- **Amenities :**
Village centre 0.3mi.
Bus stop / bus station <165'
Ski hire shop 0.3mi.
Breadshop 0.3mi.
Caterer 0.3mi.
Local shops 0.3mi.
Supermarket 0.3mi.
High class retailers 0.3mi.
Hairdressing salon 0.3mi.
Post office 0.3mi.
Bank 0.3mi.
Cash point 0.3mi.
Doctor 0.3mi.



cosy nook



the flat



ski locker

Interior

- **Receive up to :**
from 1 to 8 person(s) (4 adults, 4 children)
- **Liveable floor area :**
650 Sq.ft.
- **Interior layout :**
3 Room(s), 2 bedroom(s), 2 bathroom, 2 shower room, 1 WC, living room 160 Sq.ft., sitting room 110 Sq.ft., separate kitchen, dining room, cosy nook, tv room
- **Sleeps - bed(s) :**
2 double bed(s), 1 sofa bed(s) 2 pers, 2 single bed(s), 2 bunk beds
- **Guest facilities :**
Fireplace, T.V., DVD player, board games, film collection, t.v points, high speed internet access, wifi, cupboard, hair dryer, central heating
- **Appliances :**
Crockery/cutlery, kitchen utensils, cafetiere, electric coffee maker, electric kettle, toaster, electric raclette set, gas cooker, oven, microwave oven, extractor hood, refrigerator, freezer, dish washer, washing machine, clothes dryer, vacuum cleaner, iron, ironing board

Exterior

- **Ground surface :**
5,400 Sq.ft.
- **Outside accommodation :**
Terrace 130 Sq.ft.
- **Outside amenities :**
Garden seated area



View from the property

Services

- **Washing :**
Sheets (1 X / per week), Towels (1 X / per week), Linen (1 X / per week), Blanket(s) (1 X / per week), Quilt(s) (1 X / per week), Pillows (1 X / per week)
- **House :**
Cleaning (1 X / per week), Cleaning on departure, Snow clearance (1 X / per week), Caretaker/concierge, Parking

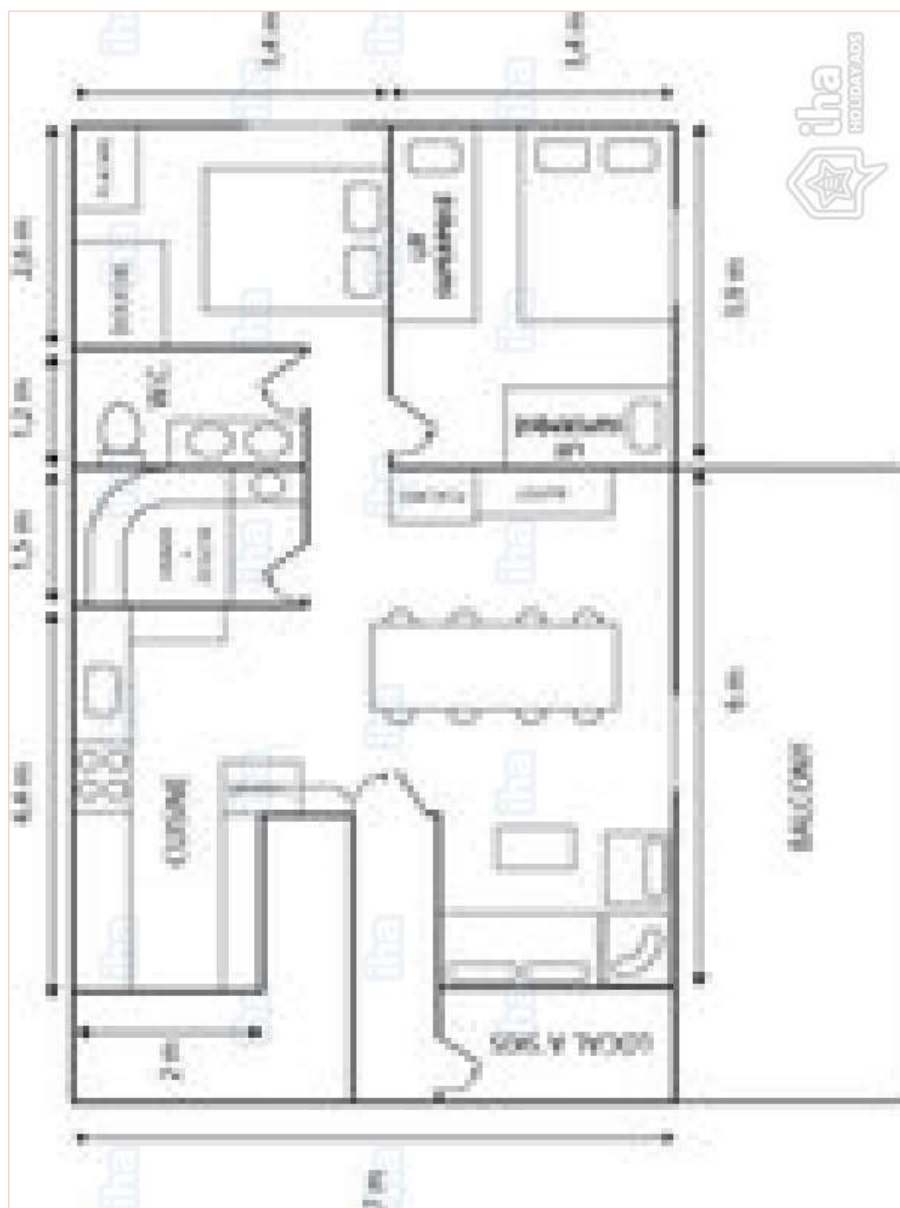
For your guidance

- **For your guidance**
Children welcome
Pets accepted under certain conditions (ask the owner)
Mobile telephone network coverage
Water : hot/cold
Local voltage supply : 220-240V / 50Hz
Electricity supply : mains



view from the kitchen

Floor plan



www.ihacom.co.uk

Photo album - 1



Charming Mountain Chalet



the flat



cosy nook



ski locker



view from the kitchen

Photo album - 2



View from the property



master bedroom



large bedroom



Winter



bathroom



shower room

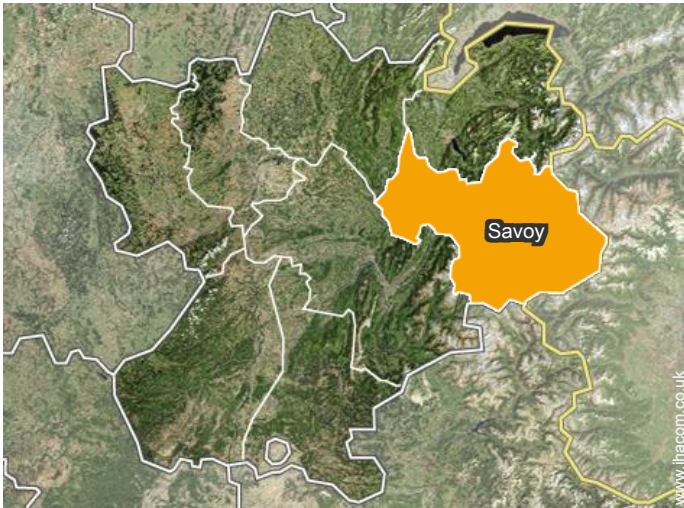


child's room



tv room

Location



Location & Access

" Street of the hoary. A shuttle service is if you have a car. "



GPS coordinates in degrees, minutes, seconds: Latitude 45°24'58"N - Longitude 6°37'40"E (Dwelling)

Address

→ Rue des Chenus
73120 Courchevel 1850

• Moûtiers : (9mi.)

• Train station Moûtiers Salins Brides les Bains

→ Moûtiers, Savoy, Rhône-Alpes, France
→ Distance : 7mi.
→ Time : 20'

• Airport Chambéry Savoie

→ Chambéry, Savoy, Rhône-Alpes, France
→ Distance : 40mi.
→ Time : 1h

• Airport Lyon St Exupery

→ Lyon, Rhône, Rhône-Alpes, France
→ Distance : 81mi.
→ Time : 1h45'

Contact

Spoken languages



Charming holiday letting Savoy - Rhône-Alpes "Chalet le Trappeur"

[Book now](#)

Availability calendar - from : october 2018

Oct	M	Tu	W	Th	F	Sa	Su	M	Tu	W	Th	F	Sa	Su	M	Tu	W	Th	F	Sa	Su	M	Tu	W	Th	F	Sa	Su	M	Tu	W
2018	1	2	3	4	5	6	7	8	9	10	11	12	13	14	15	16	17	18	19	20	21	22	23	24	25	26	27	28	29	30	31
																	-	-	-	-	-	-	-	-	-	-	-	-	-	-	-

Nov	Th	F	Sa	Su	M	Tu	W	Th	F	Sa	Su	M	Tu	W	Th	F	Sa	Su	M	Tu	W	Th	F							
2018	1	2	3	4	5	6	7	8	9	10	11	12	13	14	15	16	17	18	19	20	21	22	23	24	25	26	27	28	29	30
	-	-	-	-	-	-	-	-	-	-	-	-	-	-	-	-	-	-	-	-	-	-	-	-	-	-	-	-	-	-

Dec	Sa	Su	M	Tu	W	Th	F	Sa	Su	M	Tu	W	Th	F	Sa	Su	M	Tu	W	Th	F	Sa	Su	M							
2018	1	2	3	4	5	6	7	8	9	10	11	12	13	14	15	16	17	18	19	20	21	22	23	24	25	26	27	28	29	30	31
	-	-	-	-	-	-	-	-	-	-	-	-	-	-	-	-	-	-	-	-	-	-	-	-	-	-	-	-	-	-	

Jan	Tu	W	Th	F	Sa	Su	M	Tu	W	Th	F	Sa	Su	M	Tu	W	Th	F	Sa	Su	M	Tu	W	Th							
2019	1	2	3	4	5	6	7	8	9	10	11	12	13	14	15	16	17	18	19	20	21	22	23	24	25	26	27	28	29	30	31
	-	-	-	-	-	-	-	-	-	-	-	-	-	-	-	-	-	-	-	-	-	-	-	-	-	-	-	-	-	-	

Feb	F	Sa	Su	M	Tu	W	Th	F	Sa	Su	M	Tu	W	Th	F	Sa	Su	M	Tu	W	Th							
2019	1	2	3	4	5	6	7	8	9	10	11	12	13	14	15	16	17	18	19	20	21	22	23	24	25	26	27	28
	-	-	-	-	-	-	-	-	-	-	-	-	-	-	-	-	-	-	-	-	-	-	-	-	-	-	-	-


Mar	F	Sa	Su	M	Tu	W	Th	F	Sa	Su	M	Tu	W	Th	F	Sa	Su	M	Tu	W	Th	F	Sa	Su							
2019	1	2	3	4	5	6	7	8	9	10	11	12	13	14	15	16	17	18	19	20	21	22	23	24	25	26	27	28	29	30	31
	-	-	-	-	-	-	-	-	-	-	-	-	-	-	-	-	-	-	-	-	-	-	-	-	-	-	-	-	-	-	

Apr	M	Tu	W	Th	F	Sa	Su	M	Tu	W	Th	F	Sa	Su	M	Tu	W	Th	F	Sa	Su	M	Tu							
2019	1	2	3	4	5	6	7	8	9	10	11	12	13	14	15	16	17	18	19	20	21	22	23	24	25	26	27	28	29	30
	-	-	-	-	-	-	-	-	-	-	-	-	-	-	-	-	-	-	-	-	-	-	-	-	-	-	-	-	-	-

May	W	Th	F	Sa	Su	M	Tu	W	Th	F	Sa	Su	M	Tu	W	Th	F	Sa	Su	M	Tu	W	Th	F							
2019	1	2	3	4	5	6	7	8	9	10	11	12	13	14	15	16	17	18	19	20	21	22	23	24	25	26	27	28	29	30	31
	-	-	-	-	-	-	-	-	-	-	-	-	-	-	-	-	-	-	-	-	-	-	-	-	-	-	-	-	-	-	

June	Sa	Su	M	Tu	W	Th	F	Sa	Su	M	Tu	W	Th	F	Sa	Su	M	Tu	W	Th	F	Sa	Su							
2019	1	2	3	4	5	6	7	8	9	10	11	12	13	14	15	16	17	18	19	20	21	22	23	24	25	26	27	28	29	30
	-	-	-	-	-	-	-	-	-	-	-	-	-	-	-	-	-	-	-	-	-	-	-	-	-	-	-	-	-	-

Jul	M	Tu	W	Th	F	Sa	Su	M	Tu	W	Th	F	Sa	Su	M	Tu	W	Th	F	Sa	Su	M	Tu	W							
2019	1	2	3	4	5	6	7	8	9	10	11	12	13	14	15	16	17	18	19	20	21	22	23	24	25	26	27	28	29	30	31
	-	-	-	-	-	-	-	-	-	-	-	-	-	-	-	-	-	-	-	-	-	-	-	-	-	-	-	-	-	-	

-  Promotional period
-  Mid season
-  Festive specials
-  Reserved
-  Low season
-  High season



Charming holiday letting
Courchevel 1850 - France
"Chalet le Trappeur"

9

[Book now](#)

Availability calendar - from : July 2019

Aug	Th	F	Sa	Su	M	Tu	W	Th	F	Sa	Su	M	Tu	W	Th	F	Sa	Su	M	Tu	W	Th	F	Sa	Su	M	Tu	W	Th	F	Sa
2019	1	2	3	4	5	6	7	8	9	10	11	12	13	14	15	16	17	18	19	20	21	22	23	24	25	26	27	28	29	30	31

Sep	Su	M	Tu	W	Th	F	Sa	Su	M	Tu	W	Th	F	Sa	Su	M	Tu	W	Th	F	Sa	Su	M							
2019	1	2	3	4	5	6	7	8	9	10	11	12	13	14	15	16	17	18	19	20	21	22	23	24	25	26	27	28	29	30

- Promotional period
- Mid season
- Festive specials
- Reserved
- Low season
- High season

[Month : Next >>](#)

Rental rates - Charming Mountain Chalet - from 1 to 8 Person(s)

Rates	Night	Weekend	week	2 weeks	Month
 Low season	-	-	£2314* (Saturday)	-	-
 Mid season	-	-	£2581* (Saturday)	-	-
 High season	-	-	£3738* (Saturday)	-	-
 Festive specials	-	-	£3382* (Saturday)	-	-
 Promotional period	-	-	£1780*	-	-

(Check-in day)

[Book now](#)



cosy nook



ski locker



view from the kitchen



Charming Mountain Chalet



the flat

Booking conditions

• Reservation

- Payment made upon reservation : 30% of rental sum
- Payment balance : on handing over the keys
- Deposit required : £1335*

• rentals

- Service charges included
- Day tax included
- Cleaning charge on departure included
- Anticipated supplement for :
 - hammam, sauna

Accepted methods of payment

- Visa/Delta/Electron
- Bank transfer (wire)
- MasterCard/EuroCard
- American Express
- Cheque
- PayPal
- Travellers Cheques
- Cash

[▶ Book now](#)

[▶ Contact the owner](#)

Contact directly the property owners

www.ihacom.co.uk

Advert No.

60087

>> [Book now](#) <<

Contact

Spoken languages



* Converted at the rate indicated : €100 = \$116.85 = £89

Advert No. 60087

www.ihacom.co.uk

